



184.4± Acre Homesite/Investment Tract in Lafayette County, MS



\$899,750

Have you been looking for a place to start fresh and create your own investment? Look no further than this 184.4± acre tract in Lafayette County, MS, situated just 12 miles south of Oxford, MS, this tract has recently been logged and will offer you a blank slate to do what your heart desires. Develop the property into a weekend getaway or country homesite overlooking a lake. The property offers east and westside road frontage off MS-9W (paved) and CR 424 (gravel), a 2.7± acre pond, great homesite and potential lake site locations, and 32.9± acres of standing mature hardwood timber. Water and power are close by. If you've been searching for a place that offers that country feeling but still near great food, Call Kadero Edley today to schedule your private viewing!



**KADERO
EDLEY**
REALTOR®

Office: 601.898.2772
Cell: 601.488.7000
Kadero@TomSmithLand.com



A Real Estate Expert You Can Trust

TomSmithLandandHomes.com

Information is believed to be accurate but not guaranteed.





KADERO EDLEY
REALTOR®

Office: 601.898.2772

Cell: 601.488.7000

Kadero@TomSmithLand.com



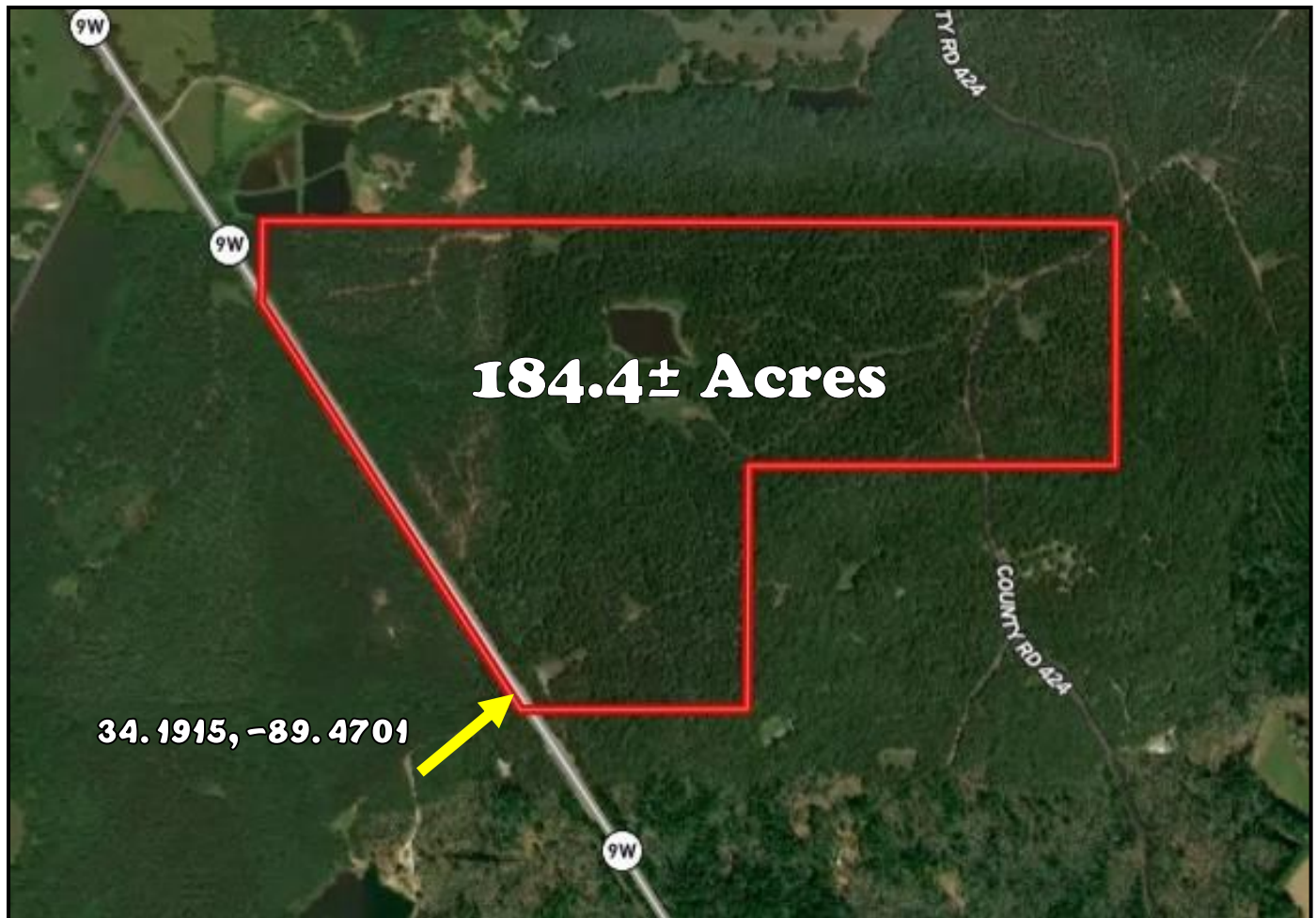
A Real Estate Expert You Can Trust
TomSmithLandandHomes.com

Information is believed to be accurate but not guaranteed.





Aerial Map



[Click Here for Interactive Map](#)

KADERO EDLEY
REALTOR®
Office: 601.898.2772
Cell: 601.488.7000
Kadero@TomSmithLand.com



A Real Estate Expert You Can Trust
TomSmithLandandHomes.com

Information is believed to be accurate but not guaranteed.





Ownership Map



KADERO EDLEY
REALTOR®
Office: 601.898.2772
Cell: 601.488.7000
Kadero@TomSmithLand.com

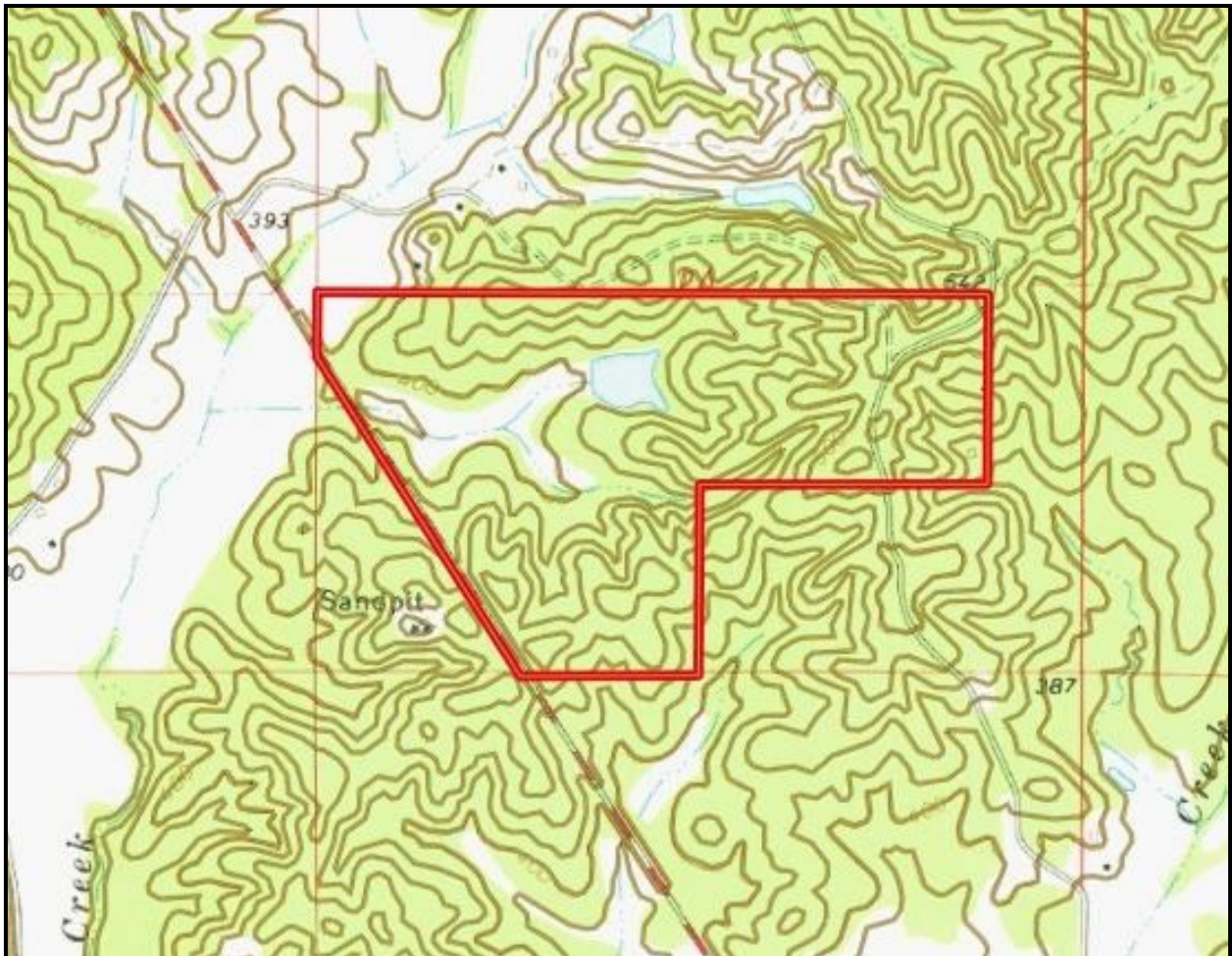


A Real Estate Expert You Can Trust
TomSmithLandandHomes.com

Information is believed to be accurate but not guaranteed.



Topographic Map



KADERO EDLEY
REALTOR®

Office: 601.898.2772

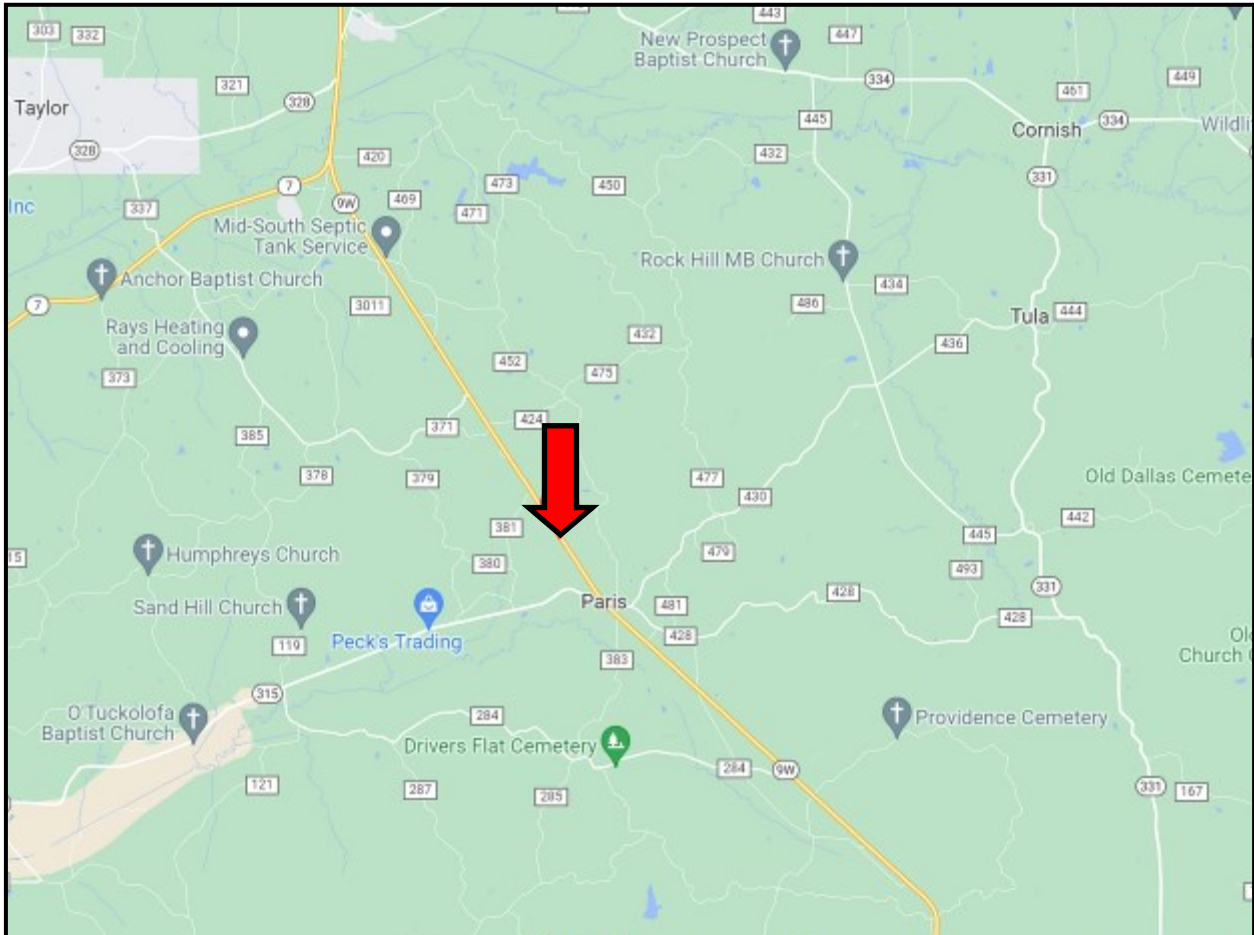
Cell: 601.488.7000

Kadero@TomSmithLand.com



Directional Map

Directions from MS-7 South in Oxford, MS: Travel South on MS-7 for 6.1 miles. Take the second exit on MS-9W N for 5.7 miles. The property will be on your left. [Google Maps Link](#)



**KADERO
EDLEY**
REALTOR®

Office: 601.898.2772
Cell: 601.488.7000
Kadero@TomSmithLand.com



A Real Estate Expert You Can Trust

TomSmithLandandHomes.com

Information is believed to be accurate but not guaranteed.

