



33.8± Acre Blank Canvas in Calhoun County, MS



\$90,750

Nestled in the secluded wilderness of Calhoun County, this tract 33.8± acre tract offers a tranquil retreat accessible via a rarely traveled gravel road. Replanted in 2019, the property features thriving vegetation that provides dense cover, ideal for creating deer bedding areas. Deer tracks were evident along the road system traversing the land, serving as a promising sign of abundant game. This remote tract presents an unmatched opportunity for those seeking an isolated haven for hunting pursuits. Give Bruce a call for your private showing today!



BRUCE WEST
REALTOR®

Office: 662.441.2500
Cell: 662.873.3007
Bruce@TomSmithLand.com



A Real Estate Expert You Can Trust

TomSmithLandandHomes.com



BRUCE WEST
REALTOR®
Office: 662.441.2500
Cell: 662.873.3007
Bruce@TomSmithLand.com



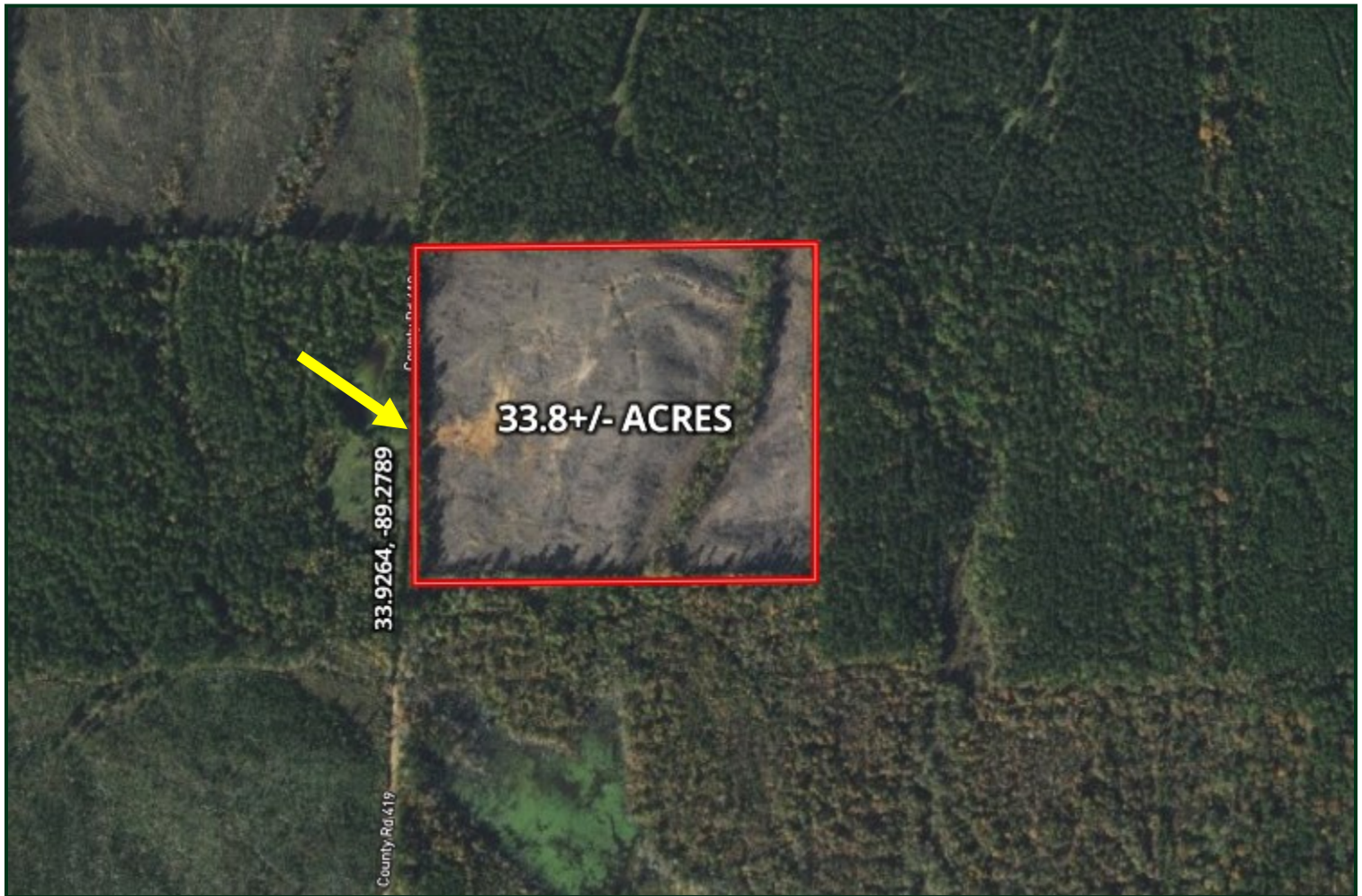
A Real Estate Expert You Can Trust
TomSmithLandandHomes.com

Information is believed to be accurate but not guaranteed.





Aerial Map



[CLICK HERE FOR AN INTERACTIVE MAP](#)

BRUCE WEST
REALTOR®
Office: 662.441.2500
Cell: 662.873.3007
Bruce@TomSmithLand.com



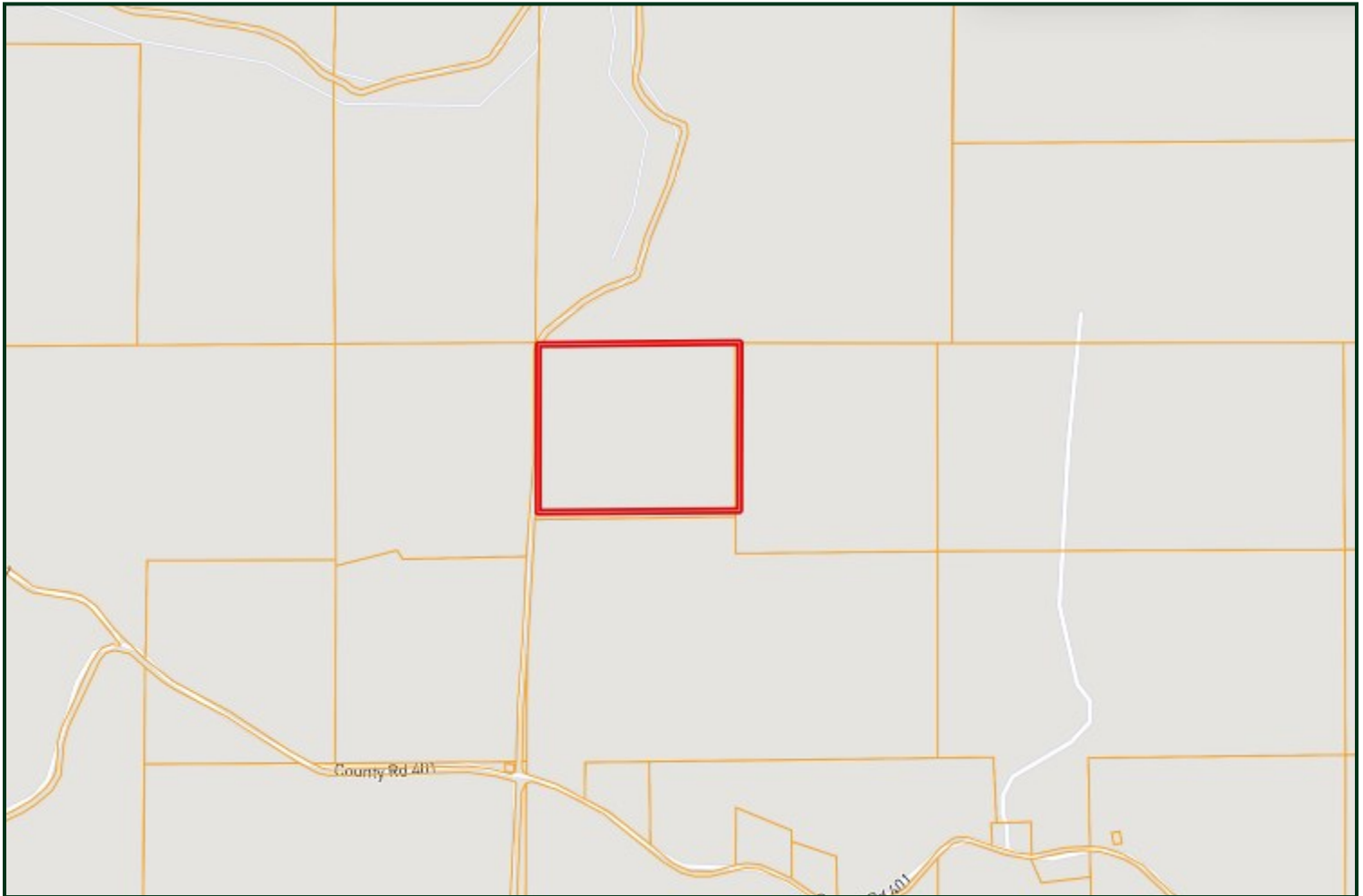
A Real Estate Expert You Can Trust
TomSmithLandandHomes.com

Information is believed to be accurate but not guaranteed.





Ownership Map



BRUCE WEST
REALTOR®
Office: 662.441.2500
Cell: 662.873.3007
Bruce@TomSmithLand.com



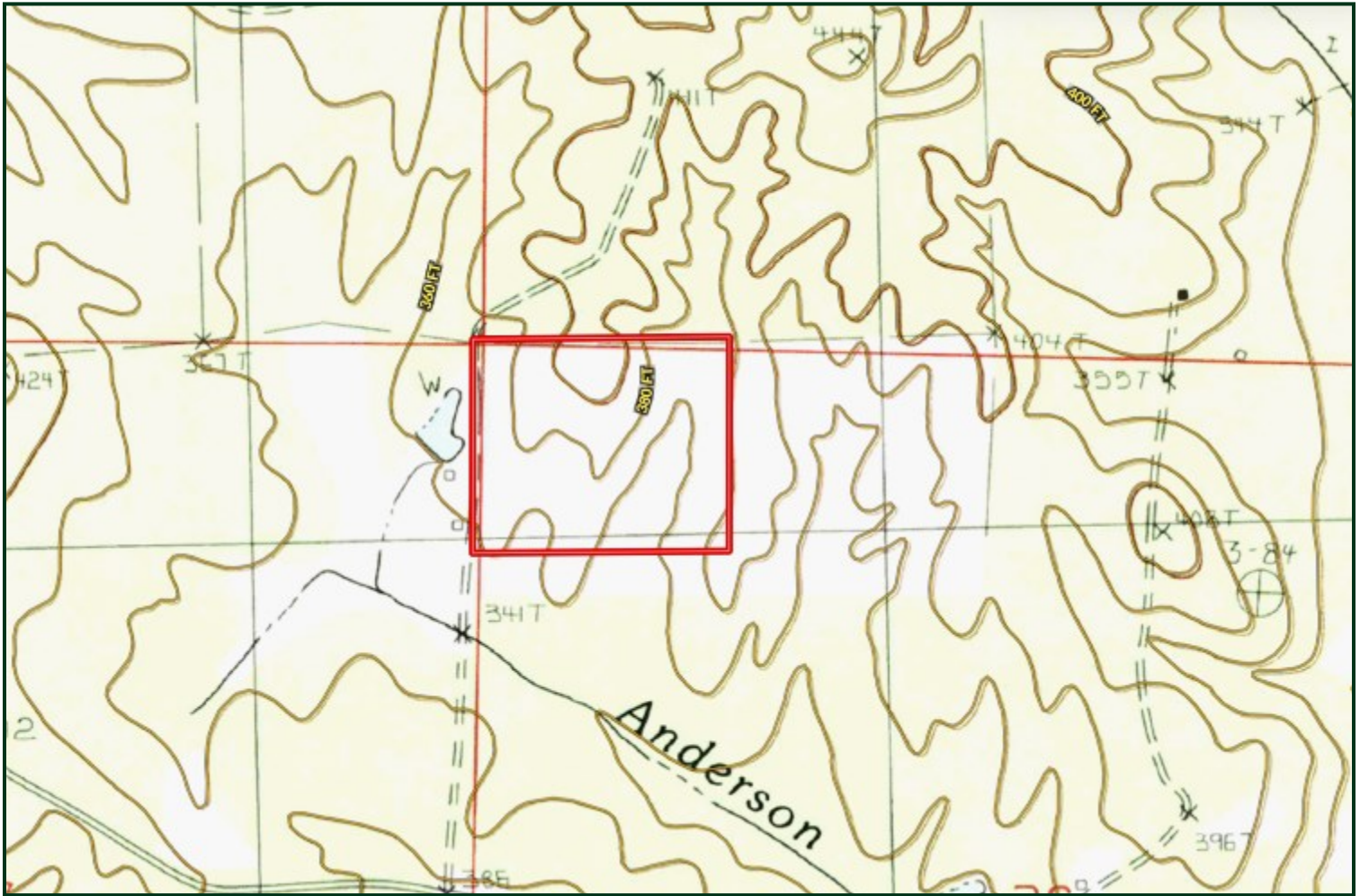
A Real Estate Expert You Can Trust
TomSmithLandandHomes.com

Information is believed to be accurate but not guaranteed.





Topo Map



BRUCE WEST
REALTOR®
Office: 662.441.2500
Cell: 662.873.3007
Bruce@TomSmithLand.com



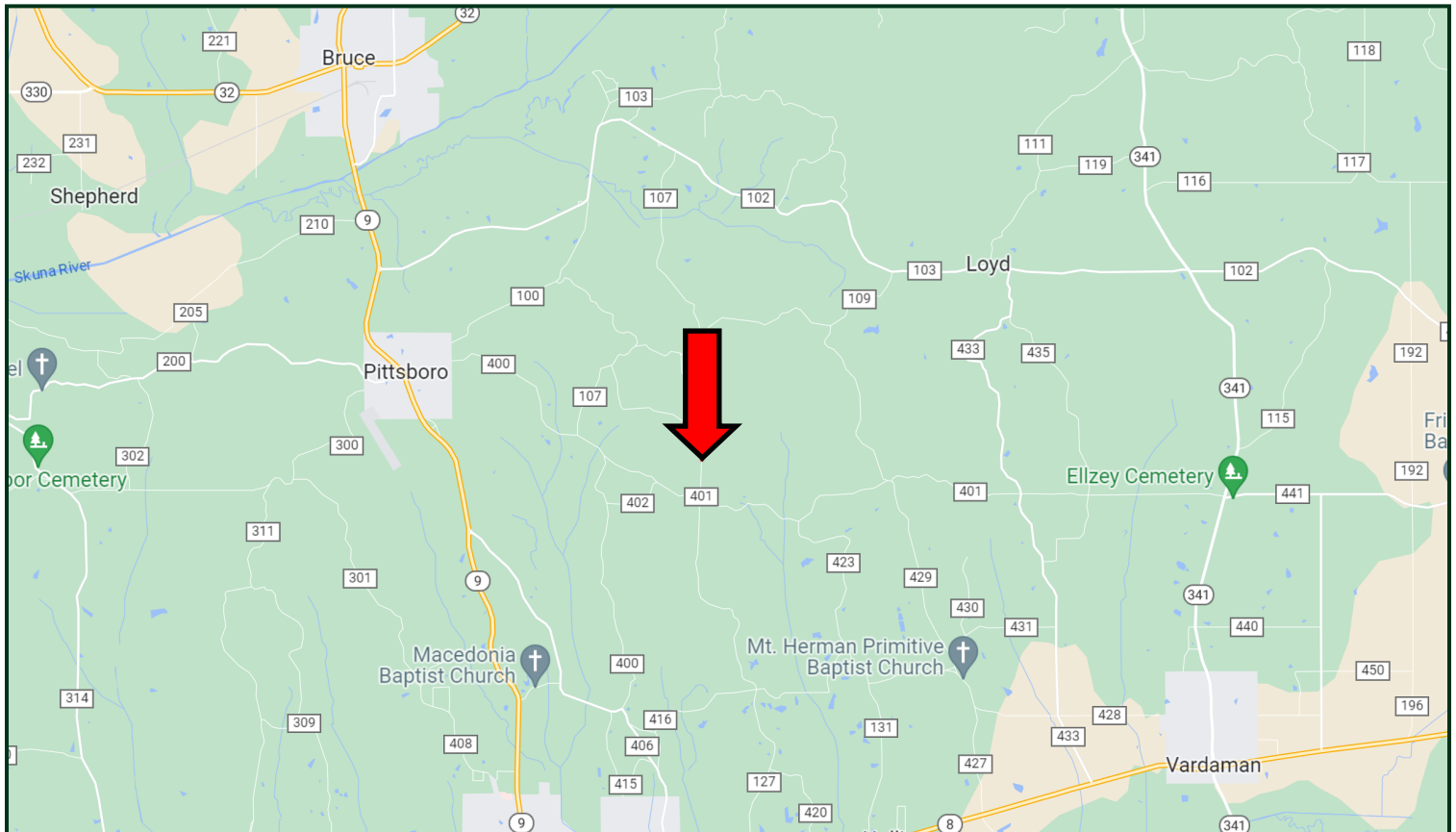
A Real Estate Expert You Can Trust
TomSmithLandandHomes.com

Information is believed to be accurate but not guaranteed.





Directional Map



Directions from Hwy 9 and CR 400 in Pittsboro, MS: Travel CR 400 for 2.4 miles. Turn left onto CR 401 and travel 1.2 miles. Turn left onto CR 419. After .4 miles, the property will be on the right.

[GOOGLE MAP LINK](#)



**BRUCE
WEST**
REALTOR®

Office: 662.441.2500
Cell: 662.873.3007
Bruce@TomSmithLand.com



A Real Estate Expert You Can Trust

TomSmithLandandHomes.com