

\$283,600

91.7± ACRE RECREATIONAL TRACT IN LEAKE COUNTY, MS



This 91.7± acre property in Leake County is located just outside Thomastown, MS, and offers a diverse and picturesque landscape. With a combination of 70± acres of 6-year-old planted pine plantation and 22± acres of 48-year-old hardwoods with mixed pines, this land presents a unique opportunity for various uses and a beautiful natural setting. The tract is located on Old Pickens Road and enjoys convenient access to nearby power and water connections, making bringing these utilities to the land easy. Whether you're seeking an exceptional hunting tract or an ideal homesite, this property caters to these possibilities. The mature trees provide a stunning backdrop and contribute to the property's overall beauty and aesthetic appeal. Take the chance to own this outstanding piece of land in Leake County. Call Chad to schedule your showing today!



**CHAD
WILSON**
REALTOR®

Office: 601.898.2772
Cell: 601.750.1970
Chad@TomSmithLand.com



A Real Estate Expert You Can Trust
TomSmithLandandHomes.com

Information is believed to be accurate but not guaranteed.





A Real Estate Expert
You Can Trust!

CHAD WILSON
REALTOR®

O: 601.898.2772 C: 601.750.1970

Chad@TomSmithLand.com

TomSmithLandandHomes.com



Expect More. Get More.



A Real Estate Expert
You Can Trust!

CHAD WILSON
REALTOR®

O: 601.898.2772 C: 601.750.1970

Chad@TomSmithLand.com

TomSmithLandandHomes.com



Expect More. Get More.



Aerial Map



[CLICK HERE FOR AN INTERACTIVE MAP](#)

A Real Estate Expert
You Can Trust!

CHAD WILSON
REALTOR®

O: 601.898.2772 C: 601.750.1970

Chad@TomSmithLand.com

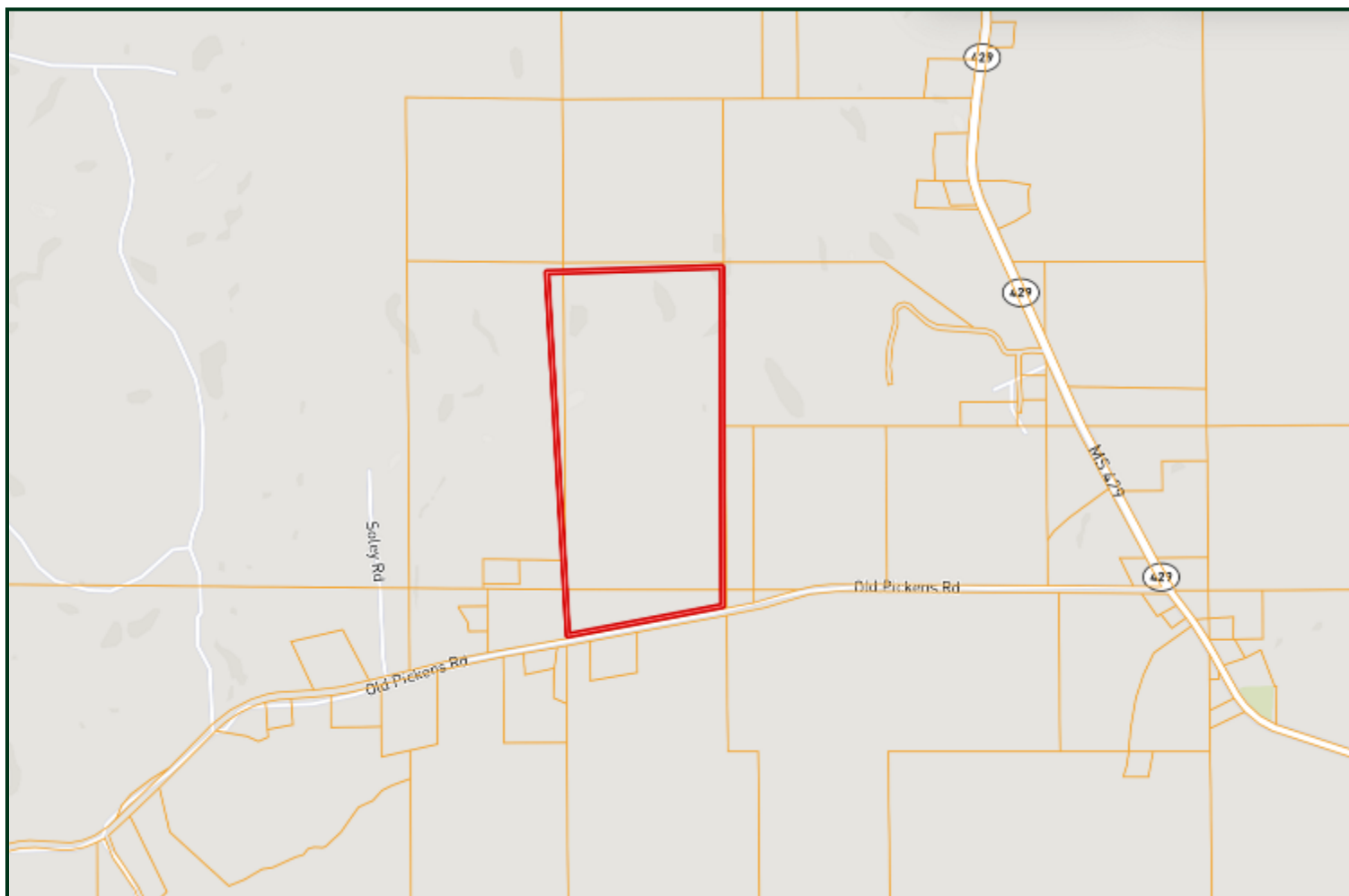
TomSmithLandandHomes.com



Expect More. Get More.



Ownership Map



A Real Estate Expert
You Can Trust!

CHAD WILSON
REALTOR®

O: 601.898.2772 C: 601.750.1970

Chad@TomSmithLand.com

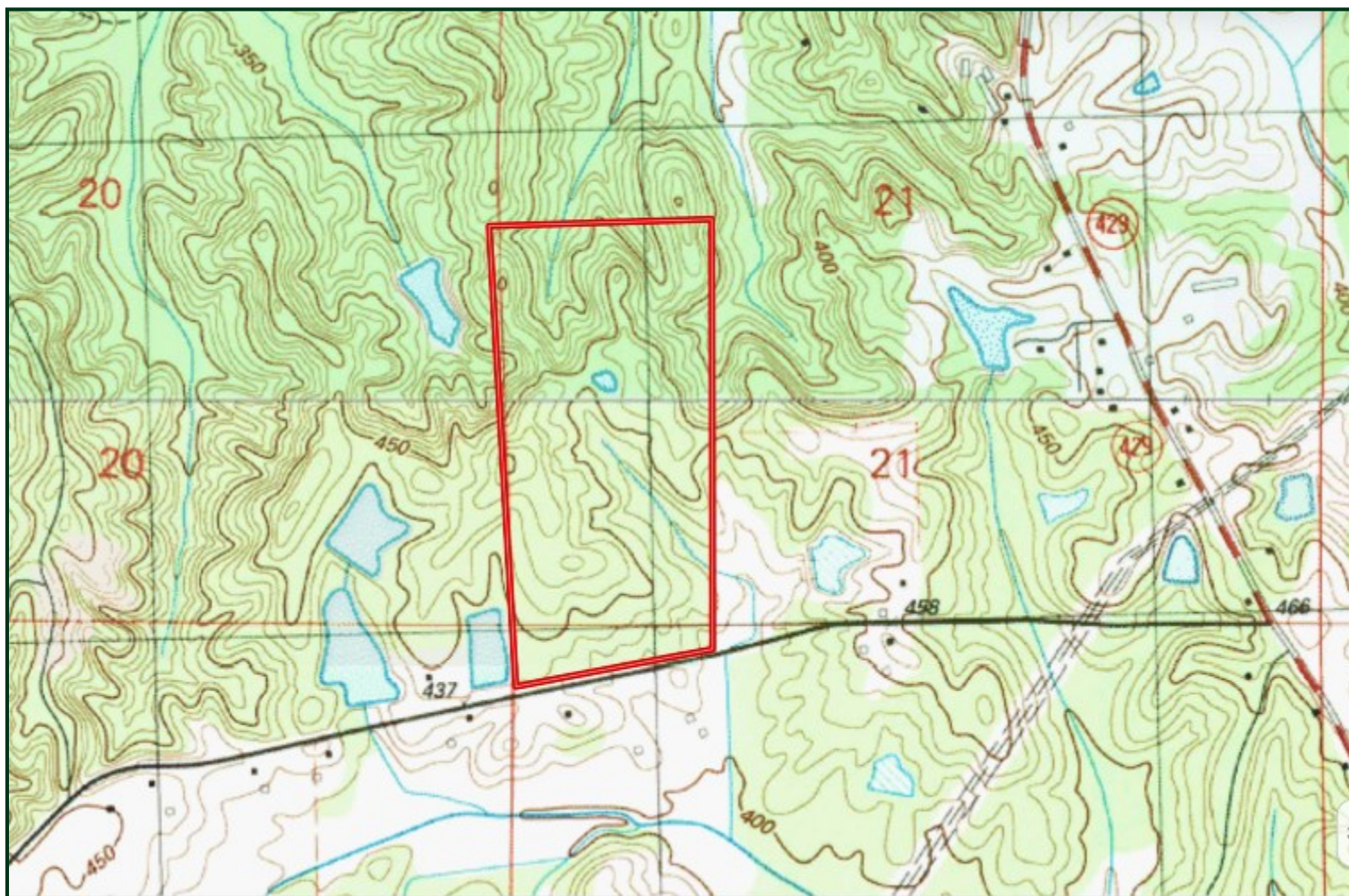
TomSmithLandandHomes.com



Expect More. Get More.



Topo Map



A Real Estate Expert
You Can Trust!

CHAD WILSON
REALTOR®

O: 601.898.2772 C: 601.750.1970

Chad@TomSmithLand.com

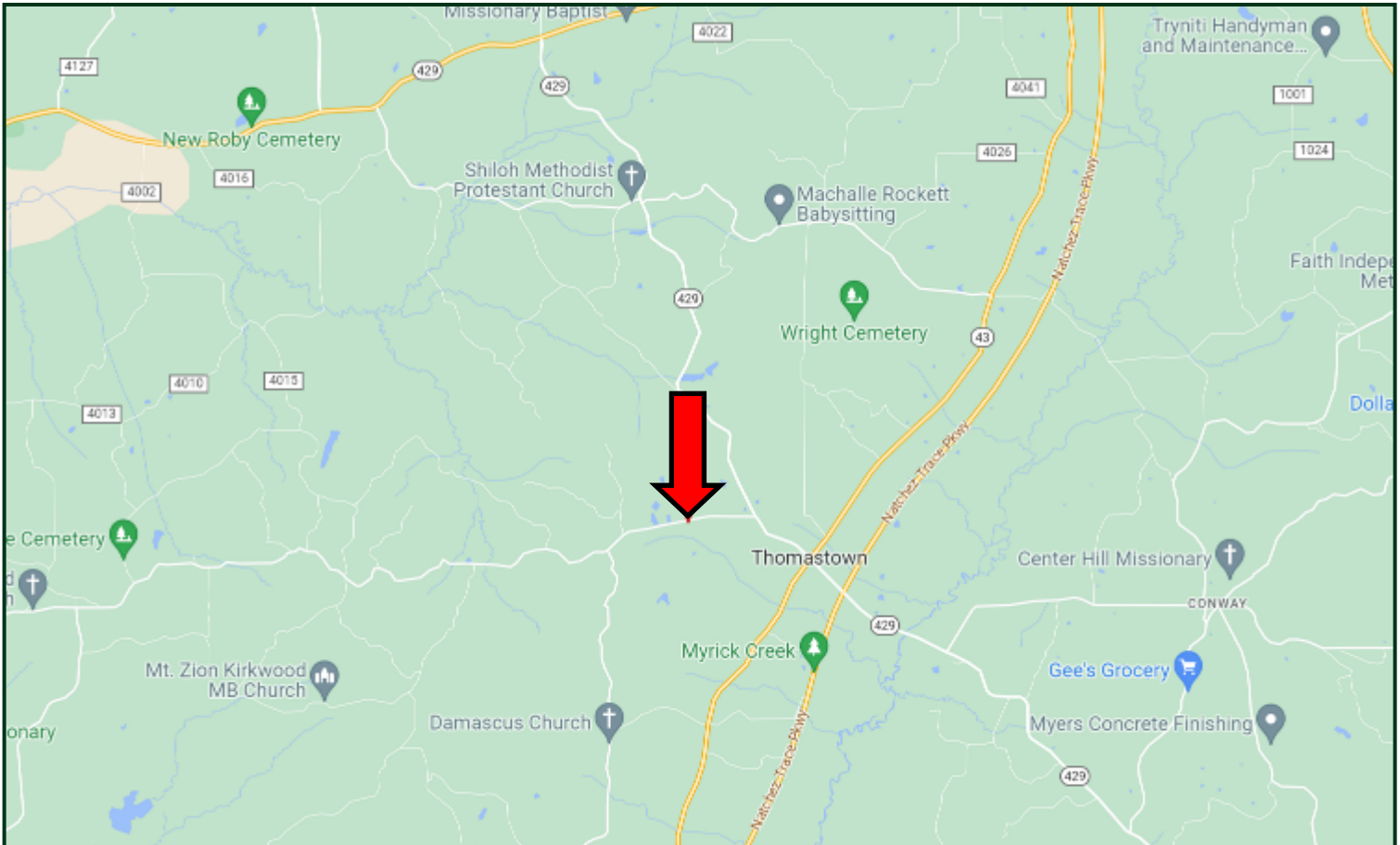
TomSmithLandandHomes.com



Expect More. Get More.



Directional Map



Directions from Hwy 43 and Hwy 429 in Thomastown, MS: Travel Hwy 429 for 1 mile. Turn left onto Old Pickens Road. After .8 miles, the property will be on the right. [GOOGLE MAP LINK](#)



**CHAD
WILSON**

REALTOR®

Office: 601.898.2772

Cell: 601.750.1970

Chad@TomSmithLand.com



A Real Estate Expert You Can Trust

TomSmithLandandHomes.com

Information is believed to be accurate but not guaranteed.

