

# Investment Property

## Bolivar County, MS



### 802 E. Sunflower Rd. Cleveland, MS 38732

If you're looking for a place to start your very own business, take a look at this newly renovated office building located in Cleveland, Bolivar County, MS. This 1,540 sqft building built in 1980 features a check-in space/lobby, two bathrooms, five office rooms, two storage rooms, and a cleaning supply room. This office is located on the corner of Hwy 8 and East Sunflower Rd., which offers over 5,000 sqft of parking. This office could be an excellent place for you and your business. Call Anthony today for a private showing!

**Directions from the corner of HWY 61 and HWY 8 in Cleveland, MS:** Travel East on Hwy 8 for approximately 0.3 miles. Turn right onto N. Martin Luther King Jr. Dr. and after 194 feet, the office building will be on the left.

**\$197,000**



*Call me  
today!*

**ANTHONY STEEN, REALTOR®**  
Anthony@TomSmithLand.com  
662.441.2500 **office** | 662.645.5151 **cell**



**TomSmithLandandHomes.com**

Information is believed to be accurate but not guaranteed.





*Call me today!*

**ANTHONY STEEN**, REALTOR®  
 Anthony@TomSmithLand.com  
 662.441.2500 **office** | 662.645.5151 **cell**



**TomSmithLandandHomes.com**

Information is believed to be accurate but not guaranteed.



*Call me today!*

**ANTHONY STEEN**, REALTOR®  
 Anthony@TomSmithLand.com  
 662.441.2500 **office** | 662.645.5151 **cell**

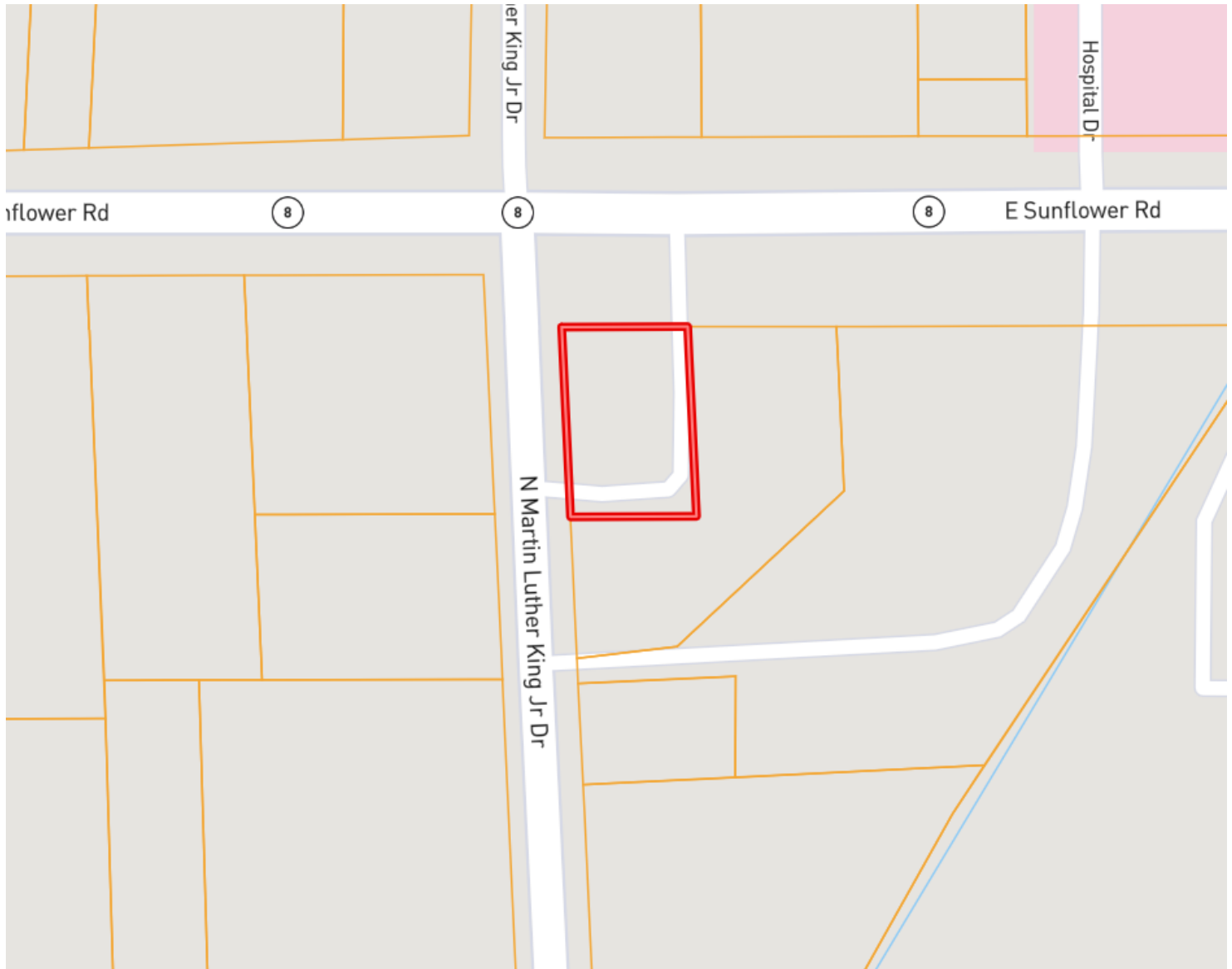


**TomSmithLandandHomes.com**

Information is believed to be accurate but not guaranteed.



# OWNERSHIP MAP



*Call me today!*

**ANTHONY STEEN**, REALTOR®  
Anthony@TomSmithLand.com  
662.441.2500 **office** | 662.645.5151 **cell**



**TomSmithLandandHomes.com**

Information is believed to be accurate but not guaranteed.

# AERIAL MAP



[Click for Interactive Map](#)

*Call me today!*

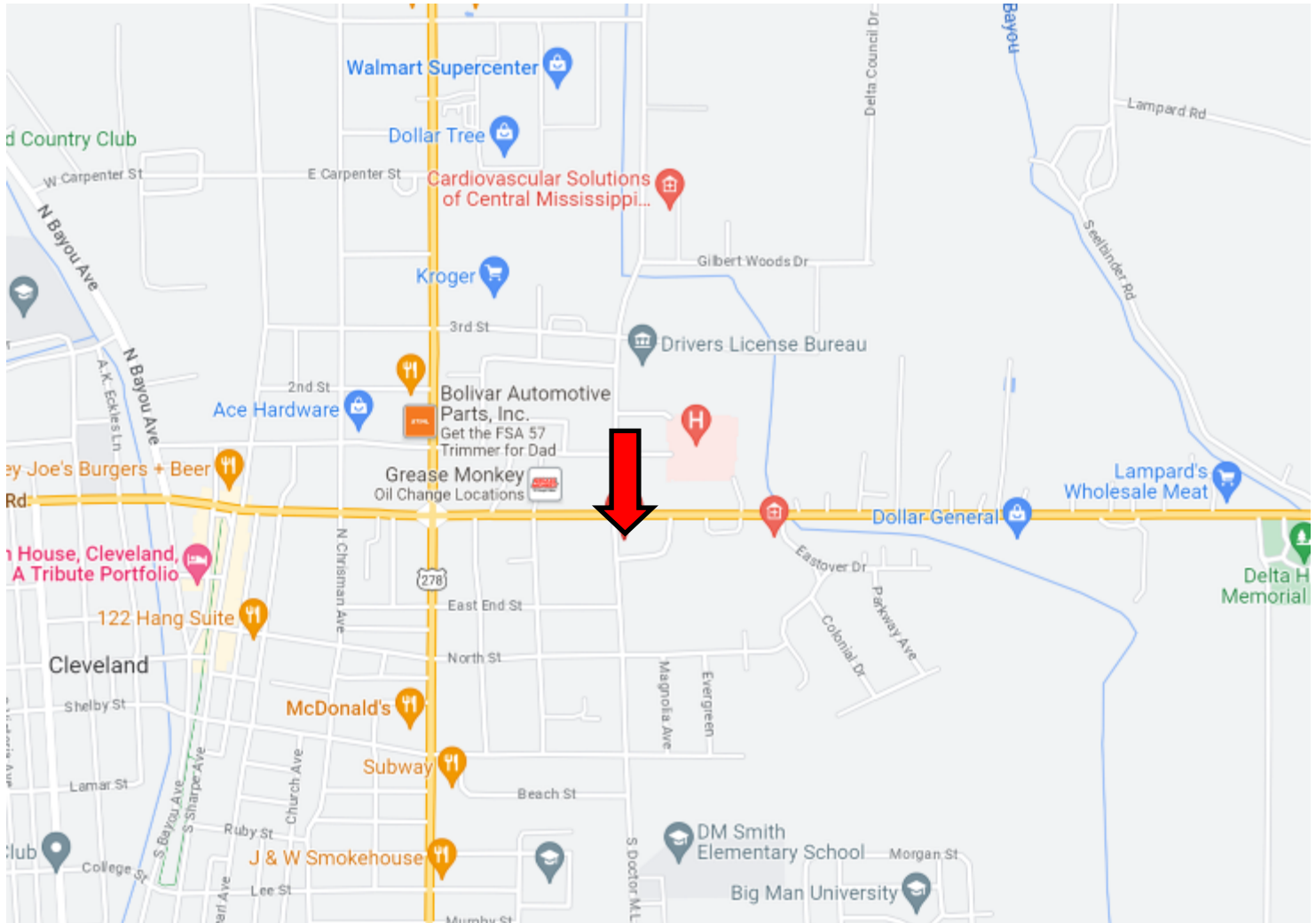
**ANTHONY STEEN**, REALTOR®  
Anthony@TomSmithLand.com  
662.441.2500 **office** | 662.645.5151 **cell**



**TomSmithLandandHomes.com**

Information is believed to be accurate but not guaranteed.

# DIRECTIONAL MAP



**Address: 802 East Sunflower Road Cleveland MS 38732**

**Directions from the corner of HWY 61 and HWY 8 in Cleveland, MS:** Travel East on Hwy. 8 for approximately 0.3 miles. Turn right onto N. Martin Luther King Jr. Drive and after 194 feet, the office building will be on the left. [Click for Google Maps.](#)



*Call me today!*

**ANTHONY STEEN, REALTOR®**  
Anthony@TomSmithLand.com  
662.441.2500 **office** | 662.645.5151 **cell**



**TomSmithLandandHomes.com**

Information is believed to be accurate but not guaranteed.