

Bolivar County Investment Property

802 East Sunflower Road Cleveland, MS 38732



\$185,950

Check out this recently renovated office building in Cleveland, Bolivar County, MS, if you're looking for a space to start your own business. This 1,540 sq ft building was built in 1980 and features a check-in space/lobby, two bathrooms, five office rooms, two storage rooms, and a cleaning supply room. Located at the corner of Hwy 8 and East Sunflower Rd., it offers over 5,000 sq ft of parking space. Take advantage of the opportunity to make this office the home for you and your business. Contact Anthony Steen today!



ANTHONY STEEN
REALTOR®
Office: 662.441.2500
Cell: 662.645.5151
Anthony@TomSmithLand.com



A Real Estate Expert You Can Trust
TomSmithLandandHomes.com

Information is believed to be accurate but not guaranteed.





ANTHONY STEEN

REALTOR®

Office: 662.441.2500

Cell: 662.645.5151

Anthony@TomSmithLand.com



A Real Estate Expert You Can Trust

TomSmithLandandHomes.com

Information is believed to be accurate but not guaranteed.





ANTHONY STEEN
REALTOR®

Office: 662.441.2500

Cell: 662.645.5151

Anthony@TomSmithLand.com



A Real Estate Expert You Can Trust
TomSmithLandandHomes.com

Information is believed to be accurate but not guaranteed.





ANTHONY STEEN

REALTOR®

Office: 662.441.2500

Cell: 662.645.5151

Anthony@TomSmithLand.com



A Real Estate Expert You Can Trust

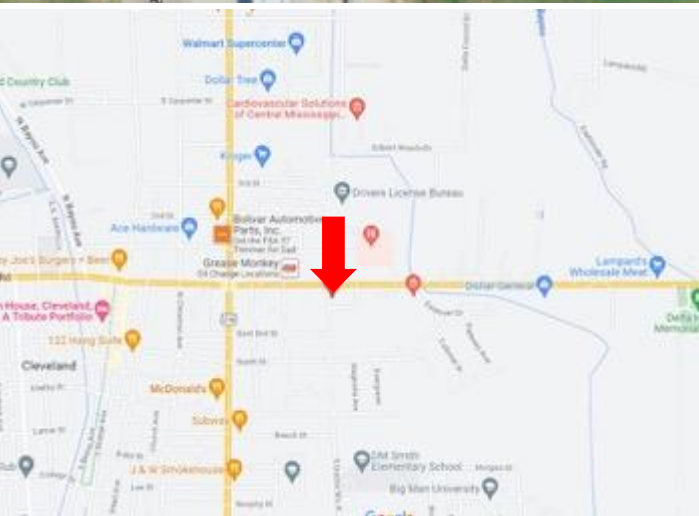
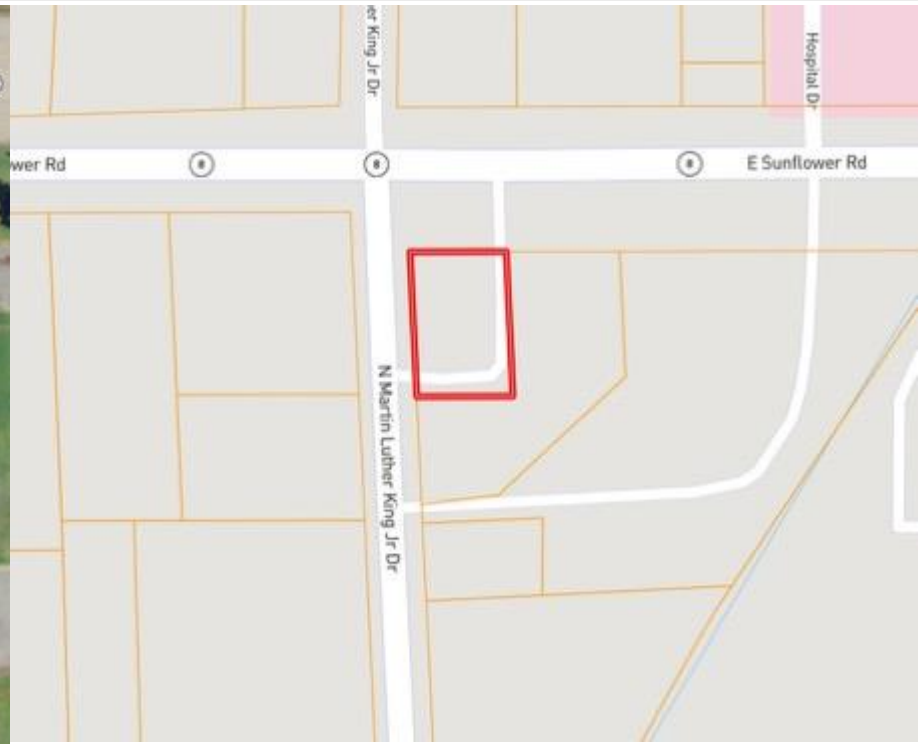
TomSmithLandandHomes.com

Information is believed to be accurate but not guaranteed.



MAPS

Click for Interactive Map



Address: 802 E Sunflower Road Cleveland, MS 38732

Directions from the corner of HWY 61 and HWY 8 in Cleveland, MS: Travel East on Hwy 8 for approximately 0.3 miles. Turn right onto N. Martin Luther King Jr. After 194 feet, the office building will be on the left. [Click for Google Maps](#)



ANTHONY STEEN
REALTOR®

Office: 662.441.2500
Cell: 662.645.5151
Anthony@TomSmithLand.com



A Real Estate Expert You Can Trust
TomSmithLandandHomes.com

Information is believed to be accurate but not guaranteed.

