

# Beautiful Sunflower County Home

2 Pine Circle Indianola, MS 38751



**\$140,000**

Home Sweet Home! Take a gander at your new 1,548± sq. ft., three bedroom, one-and-a-half bath home in Sunflower County, MS! You will notice the cozy and spacious living room area with a fireplace as you enter. A new dishwasher and oven will be included in the home purchase. The house is situated on a 0.26± acre lot, and the backyard offers plenty of space for kids to roam safely. Electricity is wired to the shop out back and will provide additional storage to keep your equipment out of the elements. The home is within Indianola, MS, city limits and roughly 25 miles west of Greenwood. Power is provided through Entergy, while water is through Indianola. If you've been searching for a great family home, call Kadero Edley today to schedule your private showing.



**KADERO  
EDLEY**  
REALTOR®

Office: 601.898.2772

Cell: 601.488.7000

Kadero@TomSmithLand.com



**A Real Estate Expert You Can Trust**

TomSmithLandandHomes.com

Information is believed to be accurate but not guaranteed.





**KADERO EDLEY**

REALTOR®

Office: 601.898.2772

Cell: 601.488.7000

Kadero@TomSmithLand.com

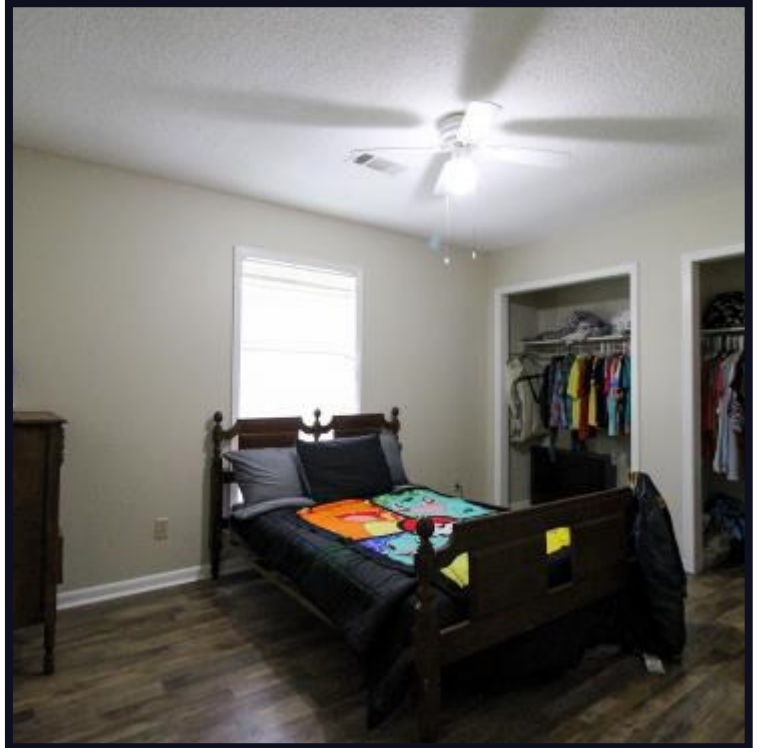


**A Real Estate Expert You Can Trust**

TomSmithLandandHomes.com

Information is believed to be accurate but not guaranteed.





**KADERO EDLEY**

REALTOR®

Office: 601.898.2772

Cell: 601.488.7000

Kadero@TomSmithLand.com



**A Real Estate Expert You Can Trust**

TomSmithLandandHomes.com

Information is believed to be accurate but not guaranteed.





**KADERO EDLEY**

REALTOR®

Office: 601.898.2772

Cell: 601.488.7000

Kadero@TomSmithLand.com



**A Real Estate Expert You Can Trust**

TomSmithLandandHomes.com

Information is believed to be accurate but not guaranteed.



# Aerial Map



[Click Here for Interactive Map](#)

**KADERO EDLEY**

REALTOR®

Office: 601.898.2772

Cell: 601.488.7000

Kadero@TomSmithLand.com



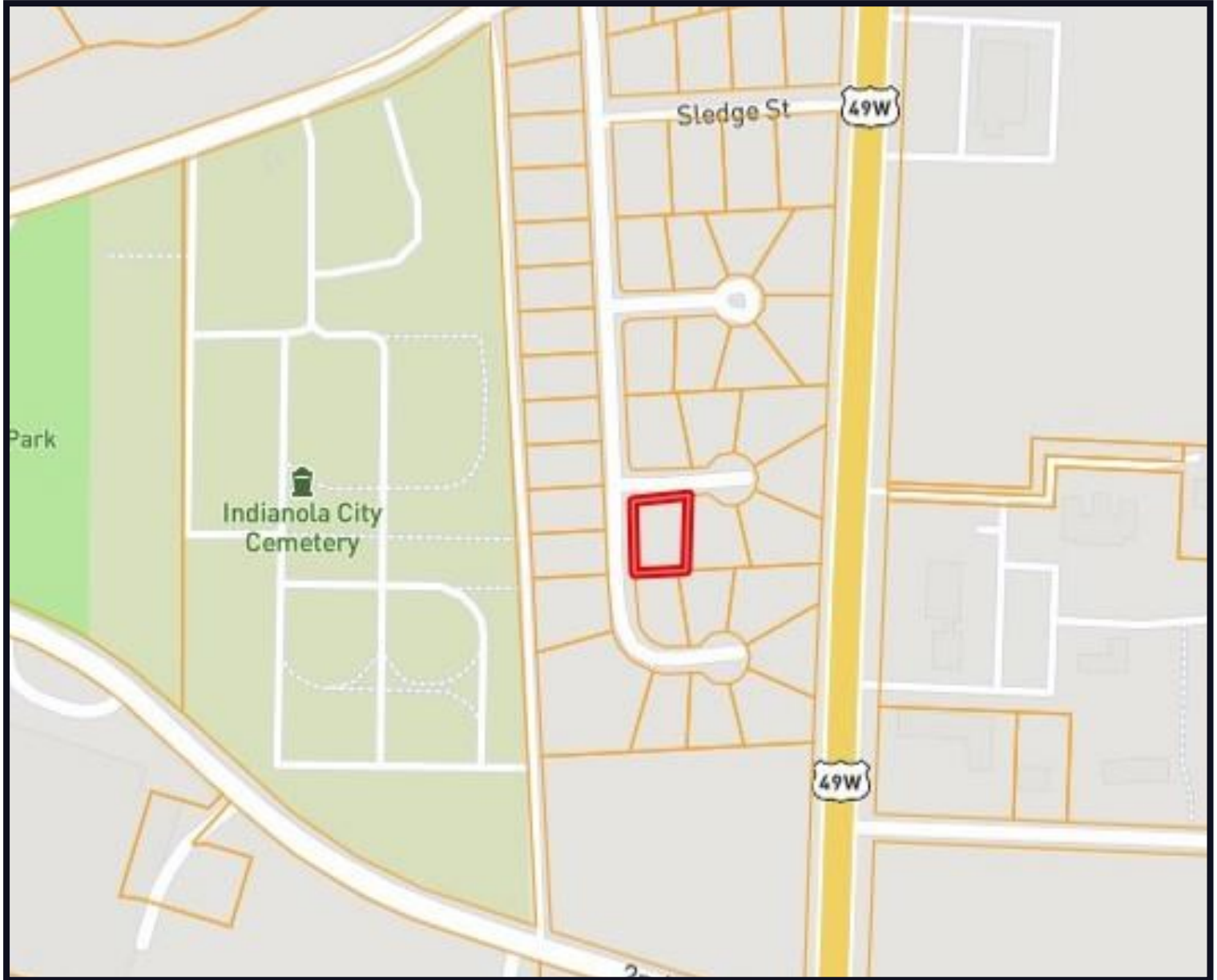
**A Real Estate Expert You Can Trust**

TomSmithLandandHomes.com

Information is believed to be accurate but not guaranteed.



# Ownership Map



**KADERO EDLEY**

REALTOR®

Office: 601.898.2772

Cell: 601.488.7000

Kadero@TomSmithLand.com



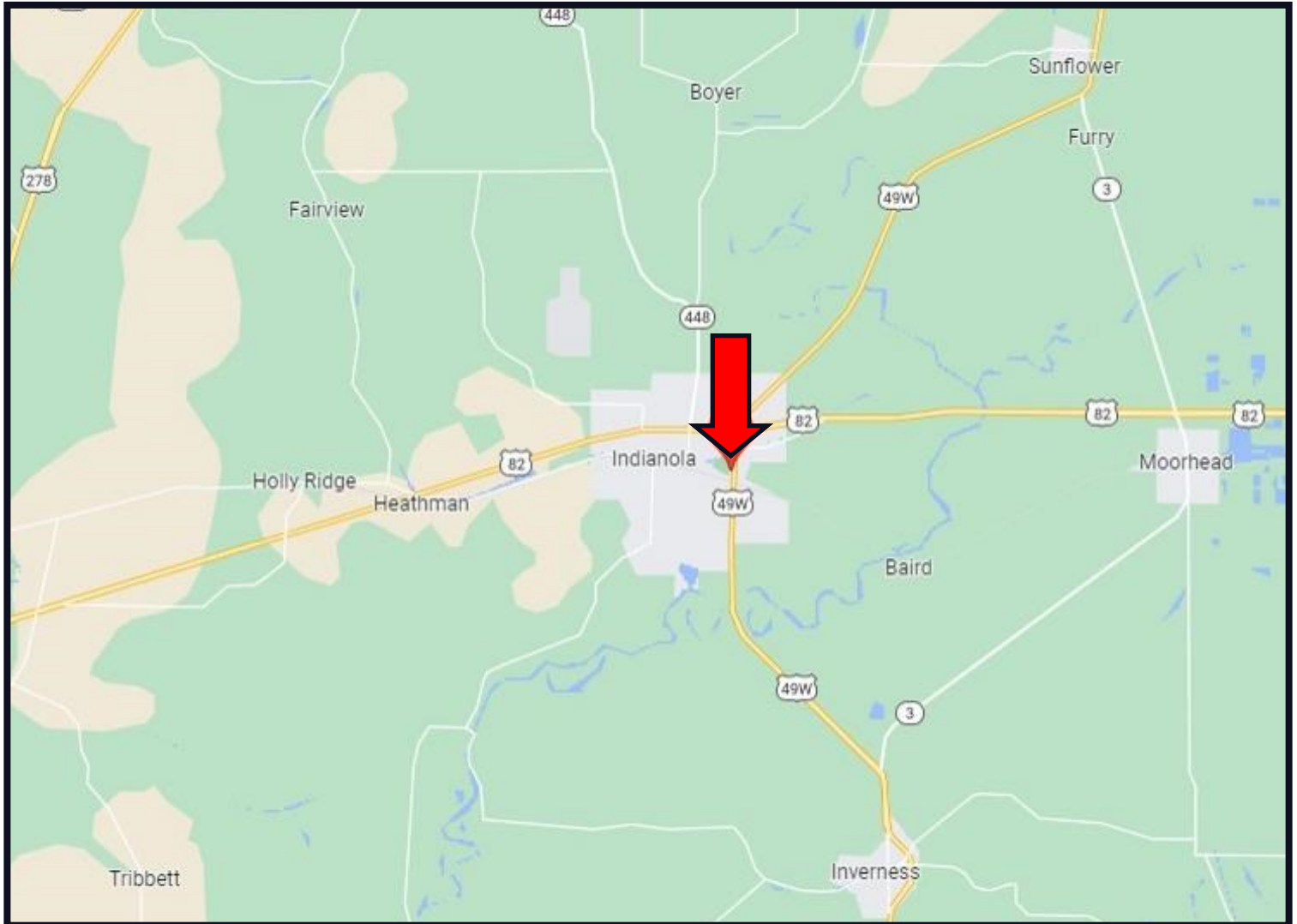
**A Real Estate Expert You Can Trust**

TomSmithLandandHomes.com

Information is believed to be accurate but not guaranteed.



# Directional Map



**Directions from HWY 82 and HWY 49 in Greenwood, MS:** Travel east on HWY 82 toward Indianola, MS for 25.1 miles. Turn left onto Martin Luther King Dr for 0.5 miles. Turn right onto Sledge St. for 0.1 miles. Turn left onto Baird Ave for 0.1 miles. Turn left onto Pine Circle. The home will be on your right. [Google Maps Link](#)  
**2 Pine Circle Indianola, MS 38751**



**KADERO  
EDLEY**  
REALTOR®

Office: 601.898.2772

Cell: 601.488.7000

Kadero@TomSmithLand.com



**A Real Estate Expert You Can Trust**

TomSmithLandandHomes.com

Information is believed to be accurate but not guaranteed.

