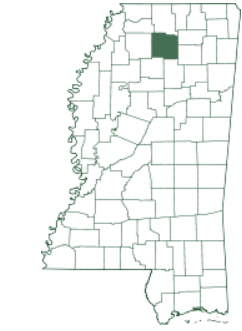




# 120.2± Acre Recreational Investment Tract in Lafayette County, MS



\$638,650



Discover a rare opportunity to own land primed for investment and development in beautiful Oxford, MS. This Lafayette County tract comprises 120.2± acres and features a clear-cut timber reserve ripe for the taking. Located just 6.1 miles from the prestigious Ole Miss University and positioned behind the highly desired Taylor Green Subdivision, this is the perfect location for developers looking to design a beautiful neighborhood. This sought-after location offers endless potential to homeowners seeking exceptional living standards. This investment opportunity boasts a prime positioning, being strategically located close to the famous Taylor Grocery Restaurant, providing easy access to unique dining experiences. Moreover, excellent access to infrastructure networks, including water and gas, makes this opportunity a golden chance for anyone looking for a quality investment. With so much to offer, this land provides an unmatched opportunity to own a prime piece of real estate in one of Oxford's most desirable neighborhoods. Act now, and secure your investment with this excellent opportunity today!



DAVID Belden REALTOR®

Office: 601.898.2772  
Cell: 601.415.3883  
DBelden@TomSmithLand.com



## A Real Estate Expert You Can Trust

TomSmithLandandHomes.com

Information is believed to be accurate but not guaranteed.





**DAVID BELDEN**

REALTOR®

Office: 601.898.2772

Cell: 601.415.3883

DBelden@TomSmithLand.com



**A Real Estate Expert You Can Trust**

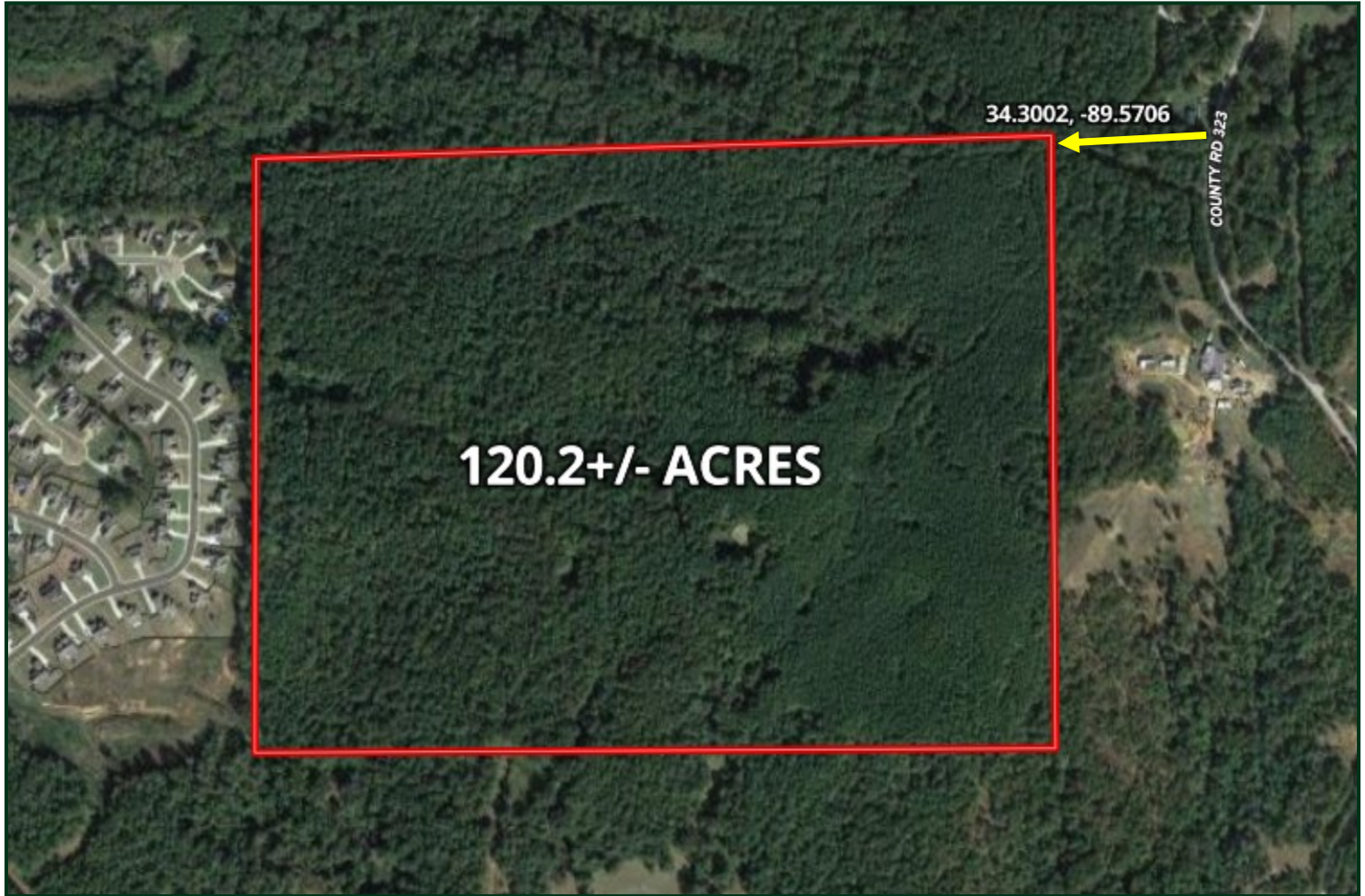
TomSmithLandandHomes.com

Information is believed to be accurate but not guaranteed.





# Aerial Map



[CLICK HERE FOR AN INTERACTIVE MAP](#)

**DAVID BELDEN**

REALTOR®

Office: 601.898.2772

Cell: 601.415.3883

DBelden@TomSmithLand.com



**A Real Estate Expert You Can Trust**

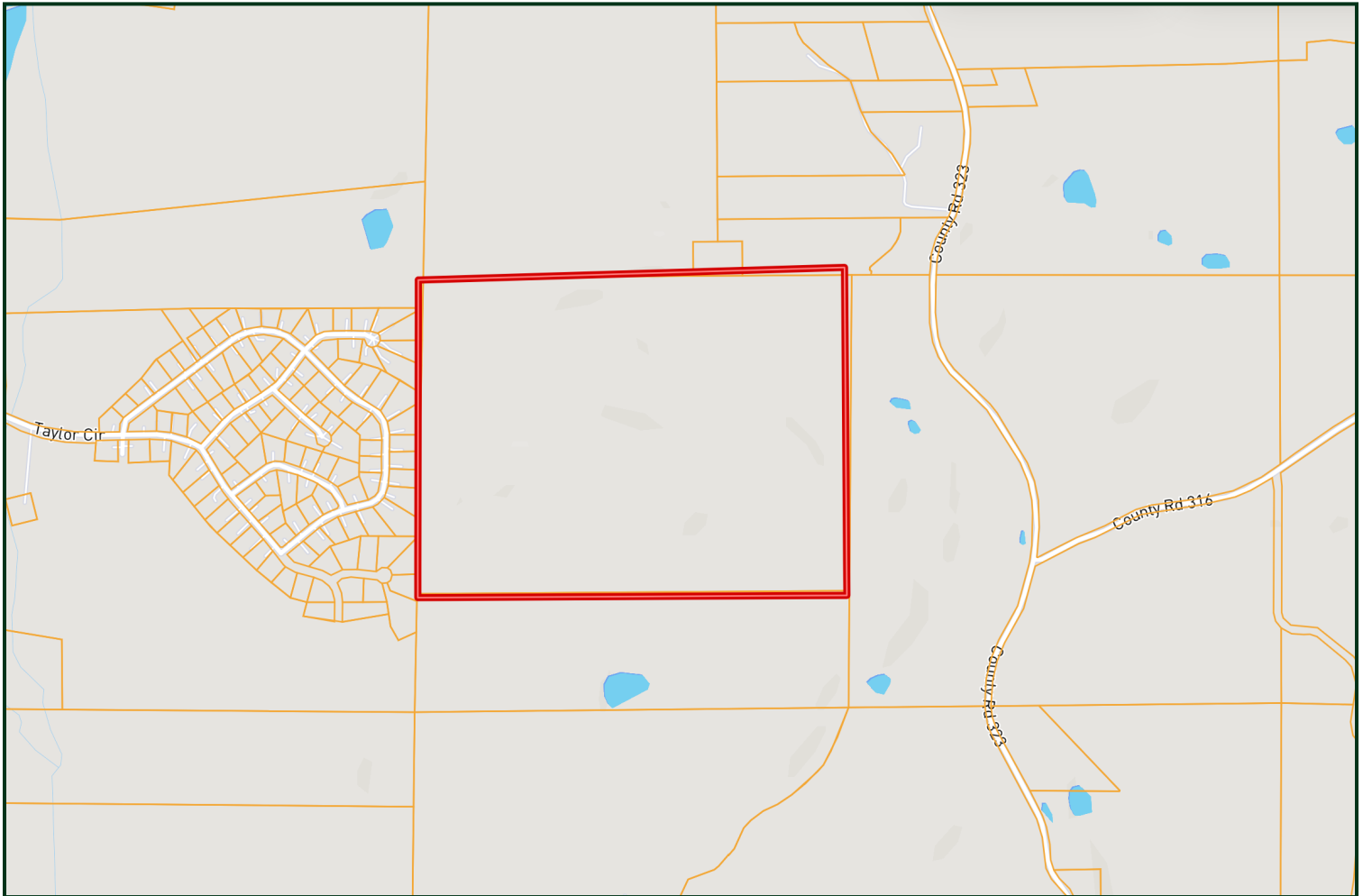
TomSmithLandandHomes.com

Information is believed to be accurate but not guaranteed.





# Ownership Map



**DAVID BELDEN**

REALTOR®

Office: 601.898.2772

Cell: 601.415.3883

DBelden@TomSmithLand.com



**A Real Estate Expert You Can Trust**

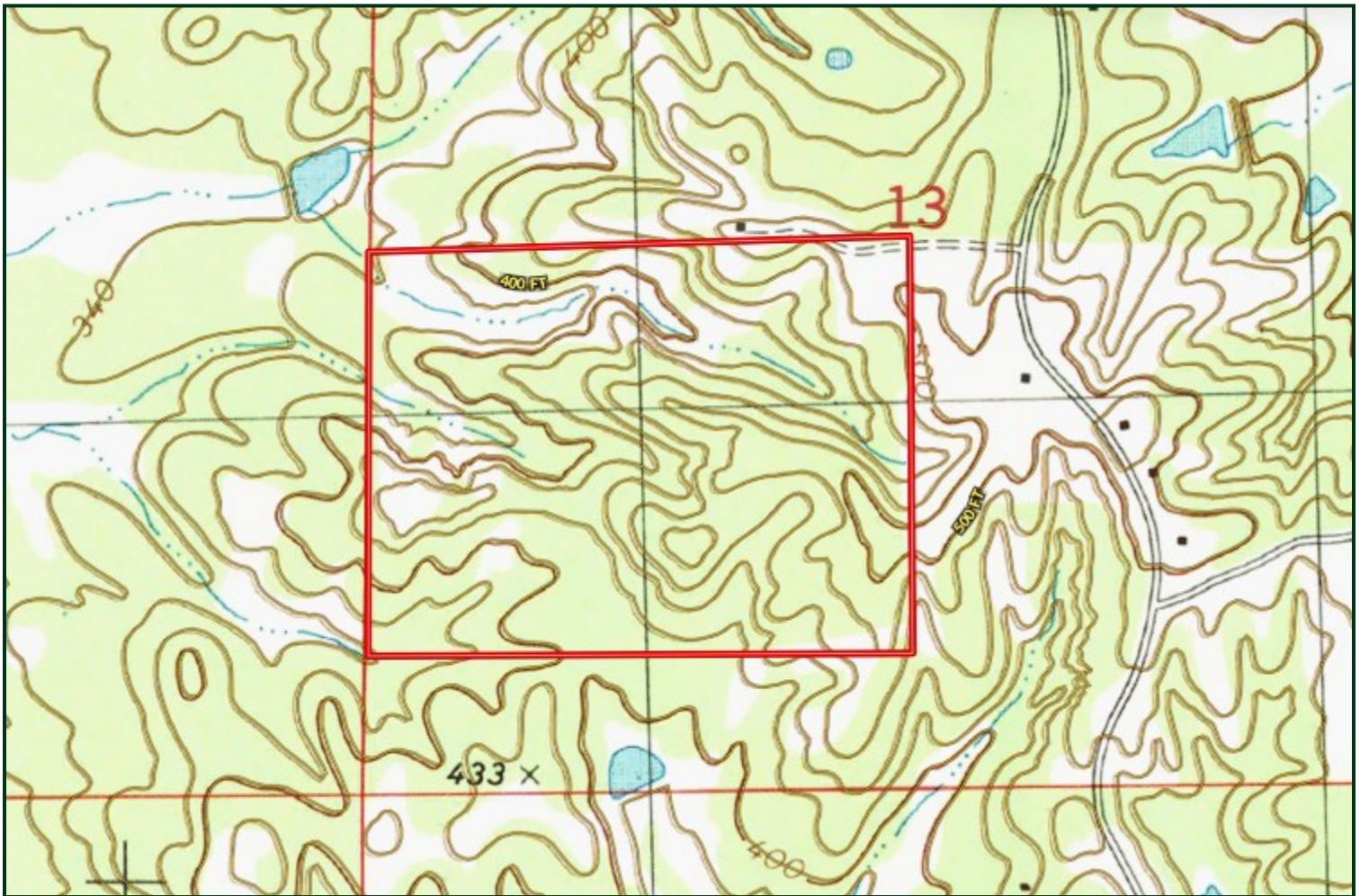
TomSmithLandandHomes.com

Information is believed to be accurate but not guaranteed.





# Topo Map



**DAVID BELDEN**

REALTOR®

Office: 601.898.2772

Cell: 601.415.3883

DBelden@TomSmithLand.com



**A Real Estate Expert You Can Trust**

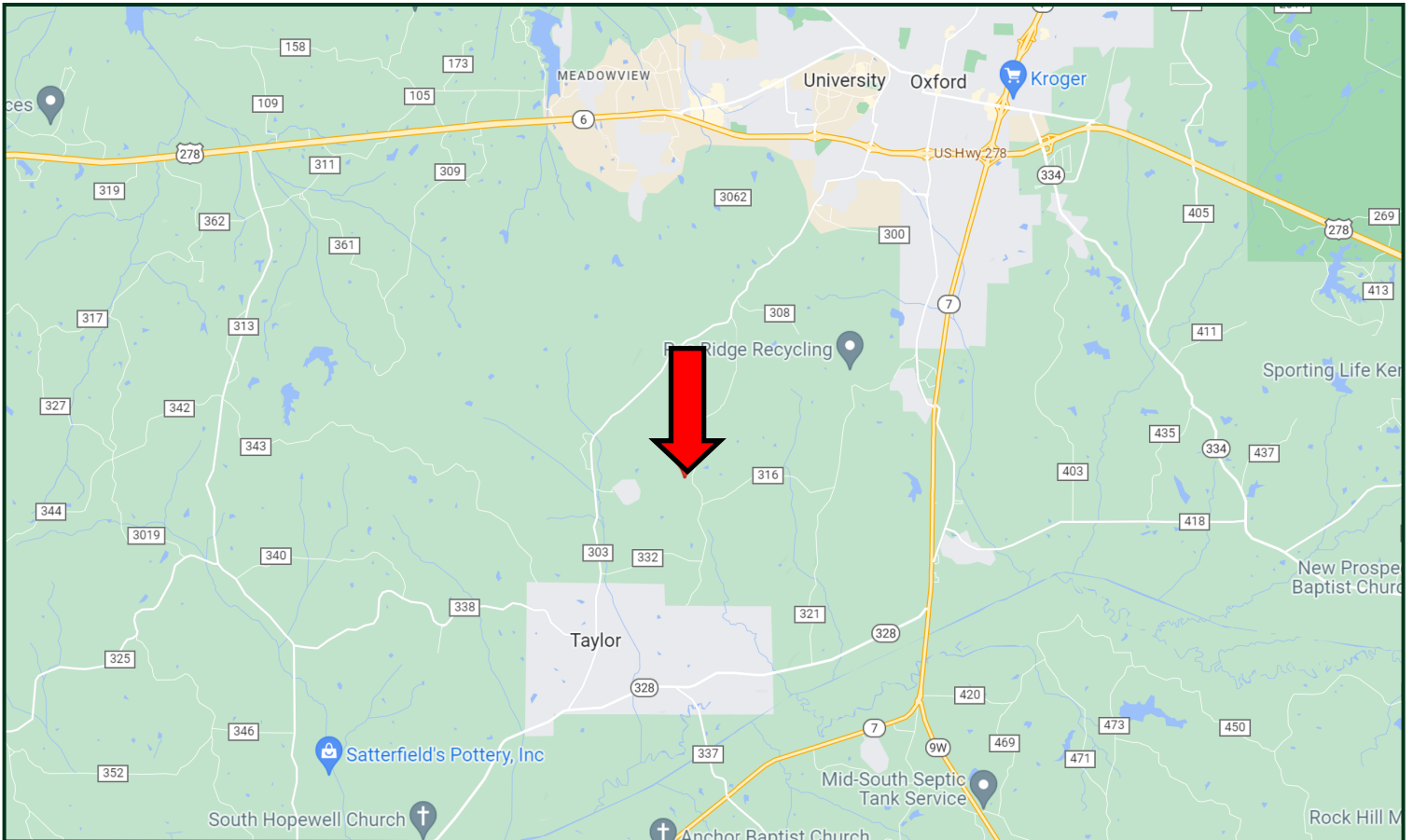
TomSmithLandandHomes.com

Information is believed to be accurate but not guaranteed.





# Directional Map



**From Hwy 6 and Old Taylor Rd. in Oxford, MS:** Travel Old Taylor Rd for 2.7 miles. Turn left onto CR 323 and travel 2.1 miles. Turn right onto CR 3073 the entrance to the property will be on your left. [GOOGLE MAP LINK](#)



**DAVID  
BELDEN**  
REALTOR®

Office: 601.898.2772  
Cell: 601.415.3883  
DBelden@TomSmithLand.com



## A Real Estate Expert You Can Trust

TomSmithLandandHomes.com

Information is believed to be accurate but not guaranteed.

