



123.1± Acre Blank Canvas in Lafayette County, MS



\$505,250



Welcome to an unparalleled opportunity to own a prime piece of real estate in one of the most sought-after locations in Lafayette County, MS. This 123.1-acre lot offers a clean slate to create whatever your heart desires, featuring no timber, giving you the freedom to bring your dream to life. This property is ideal for recreational hunting or as a home site, with ample space to create your secluded haven surrounded by breathtaking natural beauty. It's also the perfect opportunity for those looking to capitalize on an investment, whether developing or building your dream home. Positioned in a highly desired location only 15 miles from the prestigious Ole Miss University, this property sits in the heart of Lafayette County. This is a once-in-a-lifetime opportunity to buy in an exclusive location and make your dreams a reality. Give David a call to schedule your private showing today!

From the intersection of Hwy 7 and Hwy 9 in Oxford, MS: Travel Hwy 7 for 3.5 miles. Turn left onto CR 373 and travel 1.4 miles. Turn right onto CR 376 and travel .6 miles. Turn left onto CR 376. After 1.3 miles, the entrance to the property will be on your left. [GOOGLE MAP LINK](#)



**DAVID
BELDEN**
REALTOR®

Office: 601.898.2772
Cell: 601.415.3883

DBelden@TomSmithLand.com



A Real Estate Expert You Can Trust

TomSmithLandandHomes.com

Information is believed to be accurate but not guaranteed.





DAVID BELDEN

REALTOR®

Office: 601.898.2772

Cell: 601.415.3883

DBelden@TomSmithLand.com



A Real Estate Expert You Can Trust

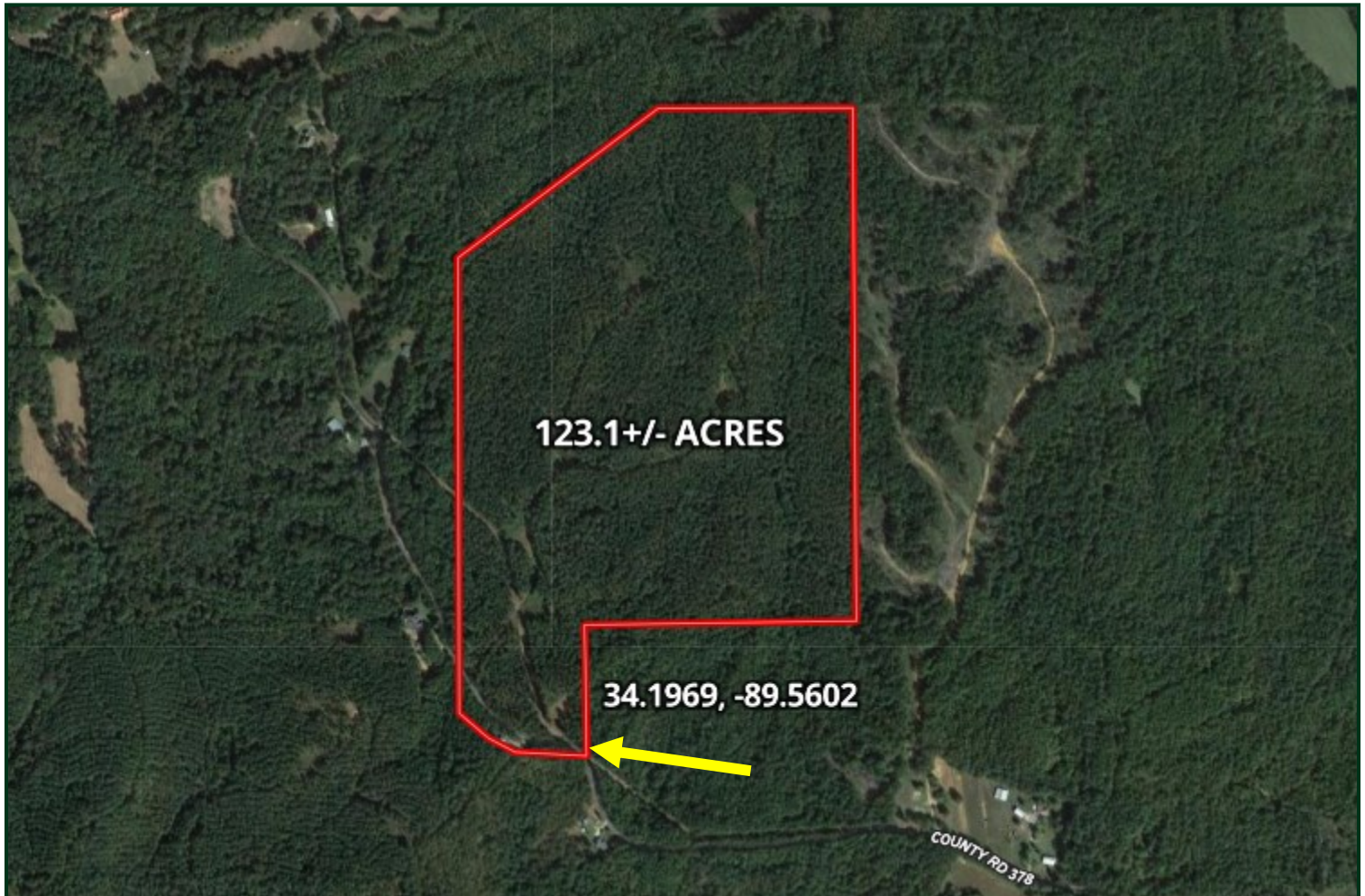
TomSmithLandandHomes.com

Information is believed to be accurate but not guaranteed.





Aerial Map



[CLICK HERE FOR AN INTERACTIVE MAP](#)

DAVID BELDEN

REALTOR®

Office: 601.898.2772

Cell: 601.415.3883

DBelden@TomSmithLand.com



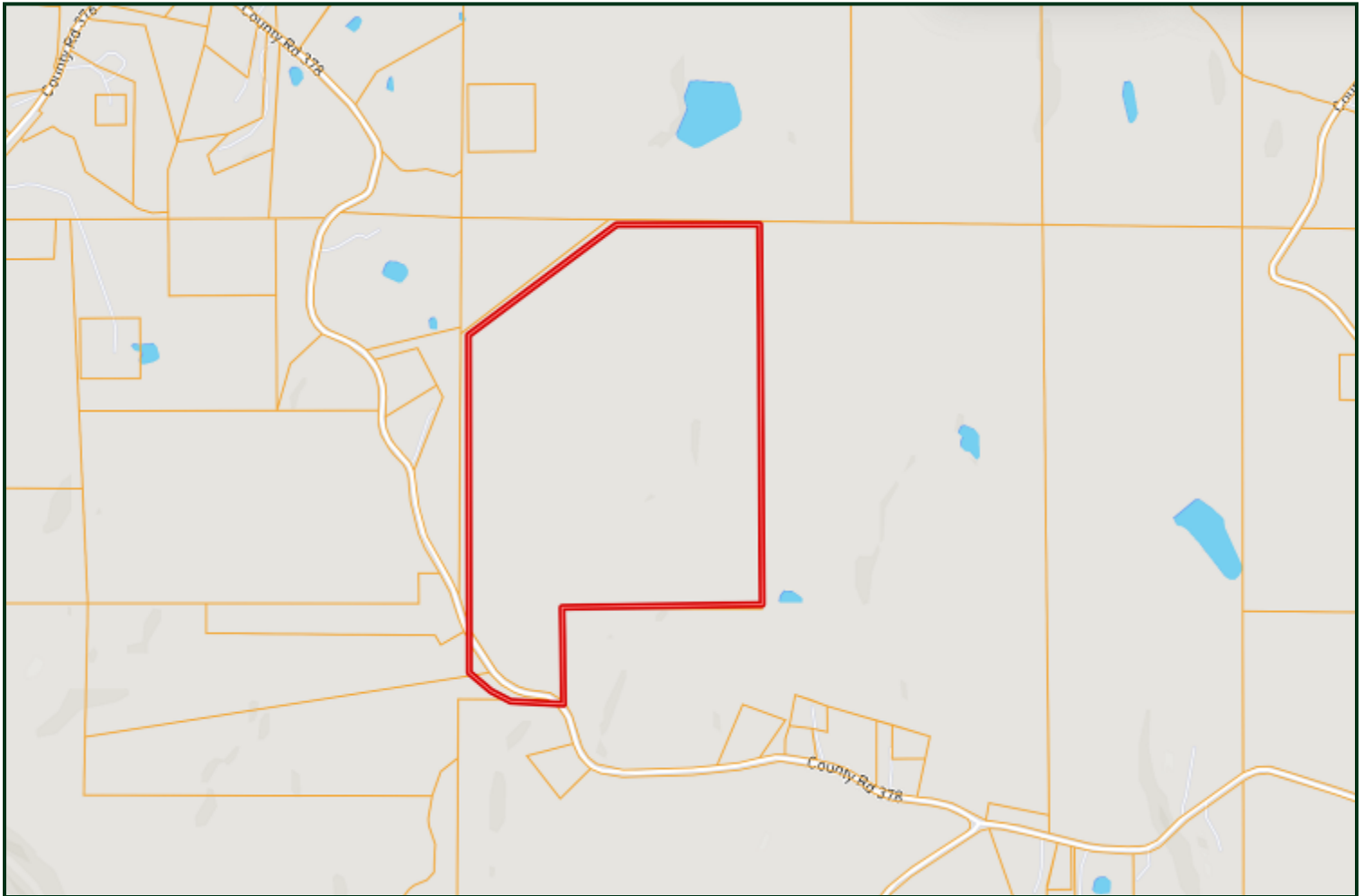
A Real Estate Expert You Can Trust

TomSmithLandandHomes.com

Information is believed to be accurate but not guaranteed.



Ownership Map



DAVID BELDEN

REALTOR®

Office: 601.898.2772

Cell: 601.415.3883

DBelden@TomSmithLand.com



A Real Estate Expert You Can Trust

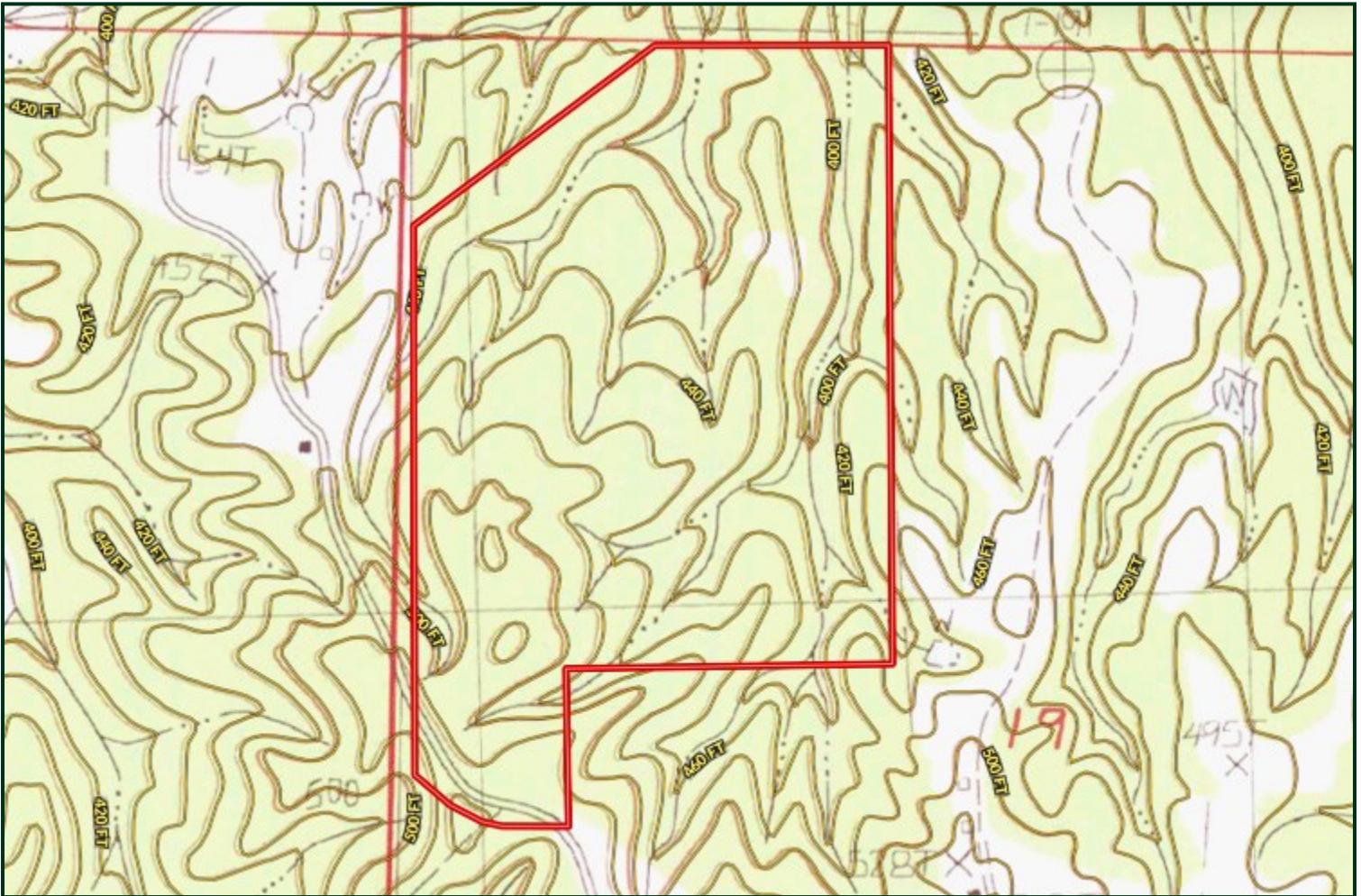
TomSmithLandandHomes.com

Information is believed to be accurate but not guaranteed.





Topo Map



DAVID BELDEN

REALTOR®

Office: 601.898.2772

Cell: 601.415.3883

DBelden@TomSmithLand.com



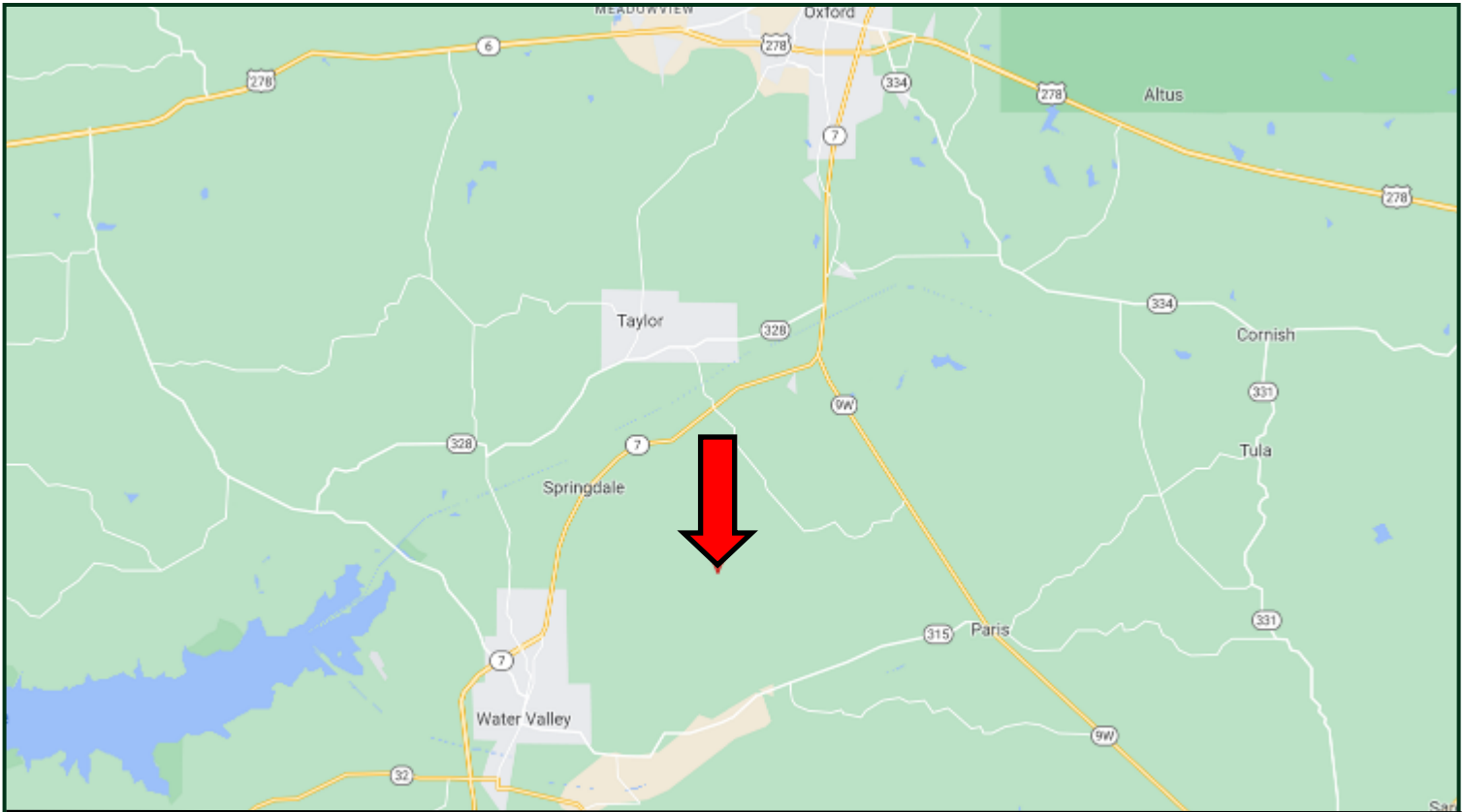
A Real Estate Expert You Can Trust

TomSmithLandandHomes.com

Information is believed to be accurate but not guaranteed.



Directional Map



From the intersection of Hwy 7 and Hwy 9 in Oxford, MS: Travel Hwy 7 for 3.5 miles. Turn left onto CR 373 and travel 1.4 miles. Turn right onto CR 376 and travel .6 miles. Turn left onto CR 376. After 1.3 miles, the entrance to the property will be on your left.

[GOOGLE MAP LINK](#)



**DAVID
BELDEN**
REALTOR®

Office: 601.898.2772
Cell: 601.415.3883

DBelden@TomSmithLand.com



A Real Estate Expert You Can Trust

TomSmithLandandHomes.com

Information is believed to be accurate but not guaranteed.

