

SECLUDED COUNTRY GETAWAY ON 3.5± ACRES

Jefferson Davis County, MS



\$107,000

749 W Whitesands Rd, New Hebron, MS

Are you looking for a quiet country escape? This secluded country getaway features a two-bedroom, one-bathroom, rustic cabin situated on 3.5± acres in New Hebron, Jefferson Davis County, MS. Upon arriving; you will find a beautiful lawn with mature oak trees, a large concrete parking area, and a 10ft x 20ft workshop with power. An additional 103± acres are available to lease for hunting deer and turkey. This weekend getaway is less than an hour from I-55 in Brookhaven and 2.5 hours from Baton Rouge and New Orleans, LA. Call Allyson today!!



**ALLYSON
MIZE**

REALTOR®

Office: 601.898.2772

Cell: 662.607.1703

Allyson@TomSmithLand.com



A Real Estate Expert You Can Trust

TomSmithLandandHomes.com

Information is believed to be accurate but not guaranteed.





Call me today!

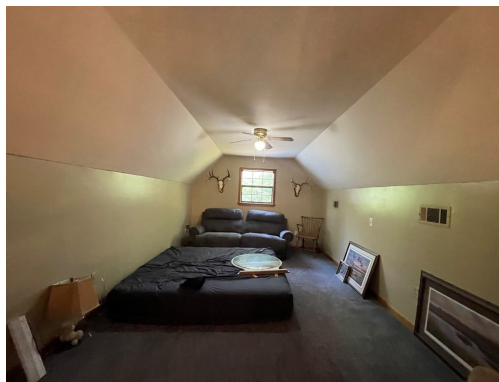
ALLYSON MIZE, REALTOR®
 Allyson@TomSmithLand.com
 601.898.2772 **office** | 662.607.1703 **cell**



Expect More. Get More.

TomSmithLandandHomes.com

Information is believed to be accurate but not guaranteed.



Call me today!

ALLYSON MIZE, REALTOR®
 Allyson@TomSmithLand.com
 601.898.2772 **office** | 662.607.1703 **cell**



Expect More. Get More.

TomSmithLandandHomes.com

Information is believed to be accurate but not guaranteed.

Aerial Map



[Click Here for an Interactive Map](#)

*Call me
today!*

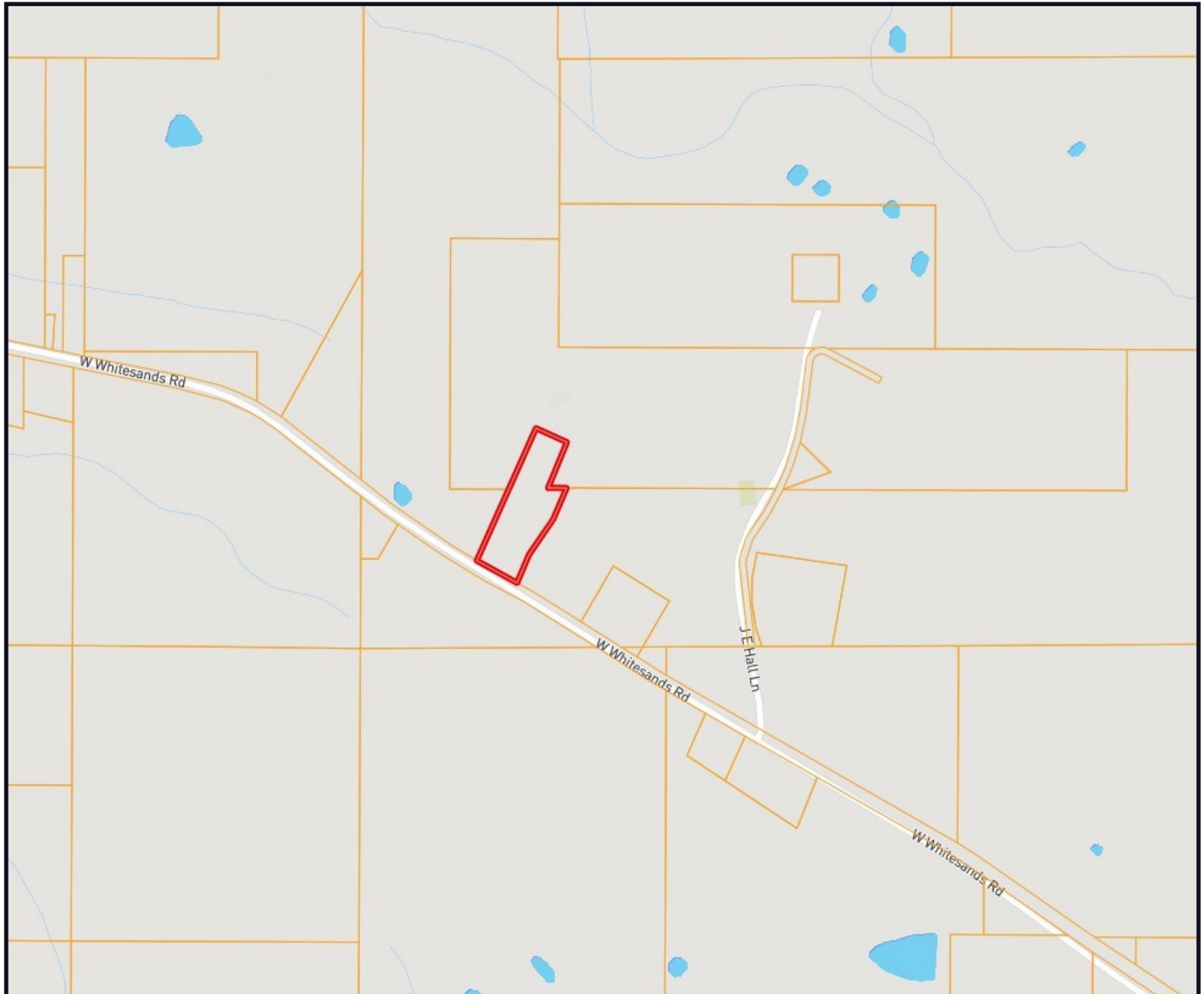
ALLYSON MIZE, REALTOR®
Allyson@TomSmithLand.com
601.898.2772 **office** | 662.607.1703 **cell**



TomSmithLandandHomes.com

Information is believed to be accurate but not guaranteed.

Ownership Map



Call me today!

ALLYSON MIZE, REALTOR®
Allyson@TomSmithLand.com
601.898.2772 **office** | 662.607.1703 **cell**

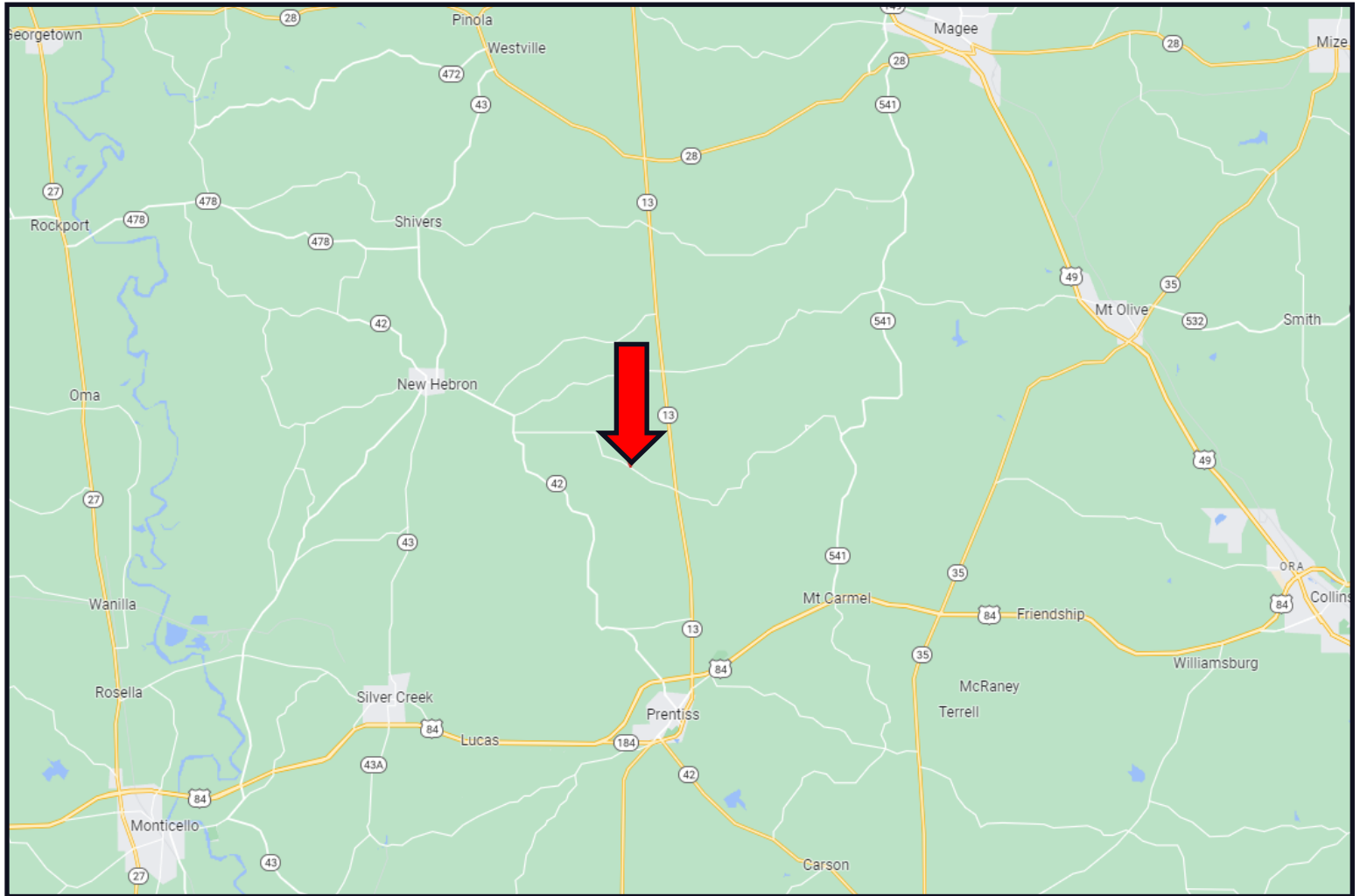


Expect More. Get More.

TomSmithLandandHomes.com

Information is believed to be accurate but not guaranteed.

Directional Map



Directions from the intersection of US-84 and MS-13 in Prentiss, MS: Travel north on MS-13 for 5.3 miles. Turn left onto W Whitesands Rd. After 1.5 miles, the property will be on the right. [GOOGLE MAP LINK](#)



**ALLYSON
MIZE**

REALTOR®

Office: 601.898.2772

Cell: 662.607.1703

Allyson@TomSmithLand.com



A Real Estate Expert You Can Trust

TomSmithLandandHomes.com

Information is believed to be accurate but not guaranteed.

