



26.3 ± ACRE TIMBERLAND TRACT IN CHOCTAW COUNTY, MS



\$65,800

Are you looking for a good investment or a small untouched tract of land? Well, here it is! This 26.3+/- acre tract in Choctaw County, MS consists of 18.5+/- acres planted in 2005 and 5.1+/- acres in hardwood. This property could be used to build a dream home with acreage or be turned into a small hunting tract. There is also over 1,500 feet of road frontage on Highway 15, and utilities are available nearby. It is conveniently located within the Choctaw County School District, only 9 minutes from Main Street in Ackerman and 35 minutes from Starkville. Call Michael Halfacre for your private showing!

Directions from Hwy 12 and Hwy 15 in Ackerman, MS: Travel MS-15 North for 6.9 miles. The property will be on your left.

[Google Map Link](#)



**MICHAEL
HALFACRE**

MANAGING BROKER

Office: 662.268.6333

Cell: 662.242.4220

MHalfacre@TomSmithLand.com



A Real Estate Expert You Can Trust

TomSmithLandandHomes.com



A Real Estate Expert *You Can Trust!*

MICHAEL HALFACRE

MANAGING BROKER

O: 662.268.6333 C: 662.242.4220

MHalfacre@TomSmithLand.com

TomSmithLandandHomes.com

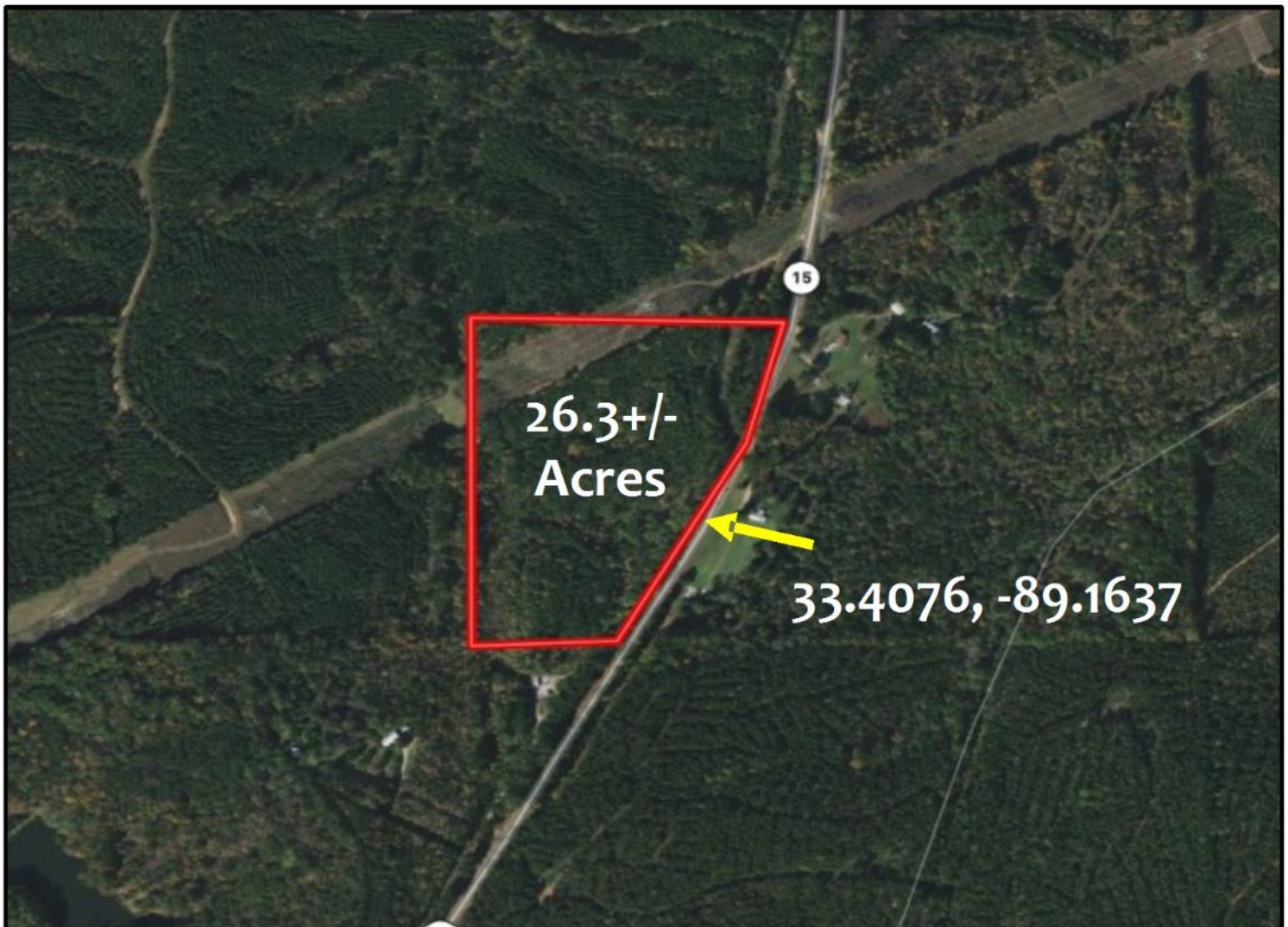


Expect More. Get More.



AERIAL MAP

[Click Here for Interactive Map](#)



A Real Estate Expert
You Can Trust!

MICHAEL HALFACRE

MANAGING BROKER

O: 662.268.6333 C: 662.242.4220

MHalfacre@TomSmithLand.com

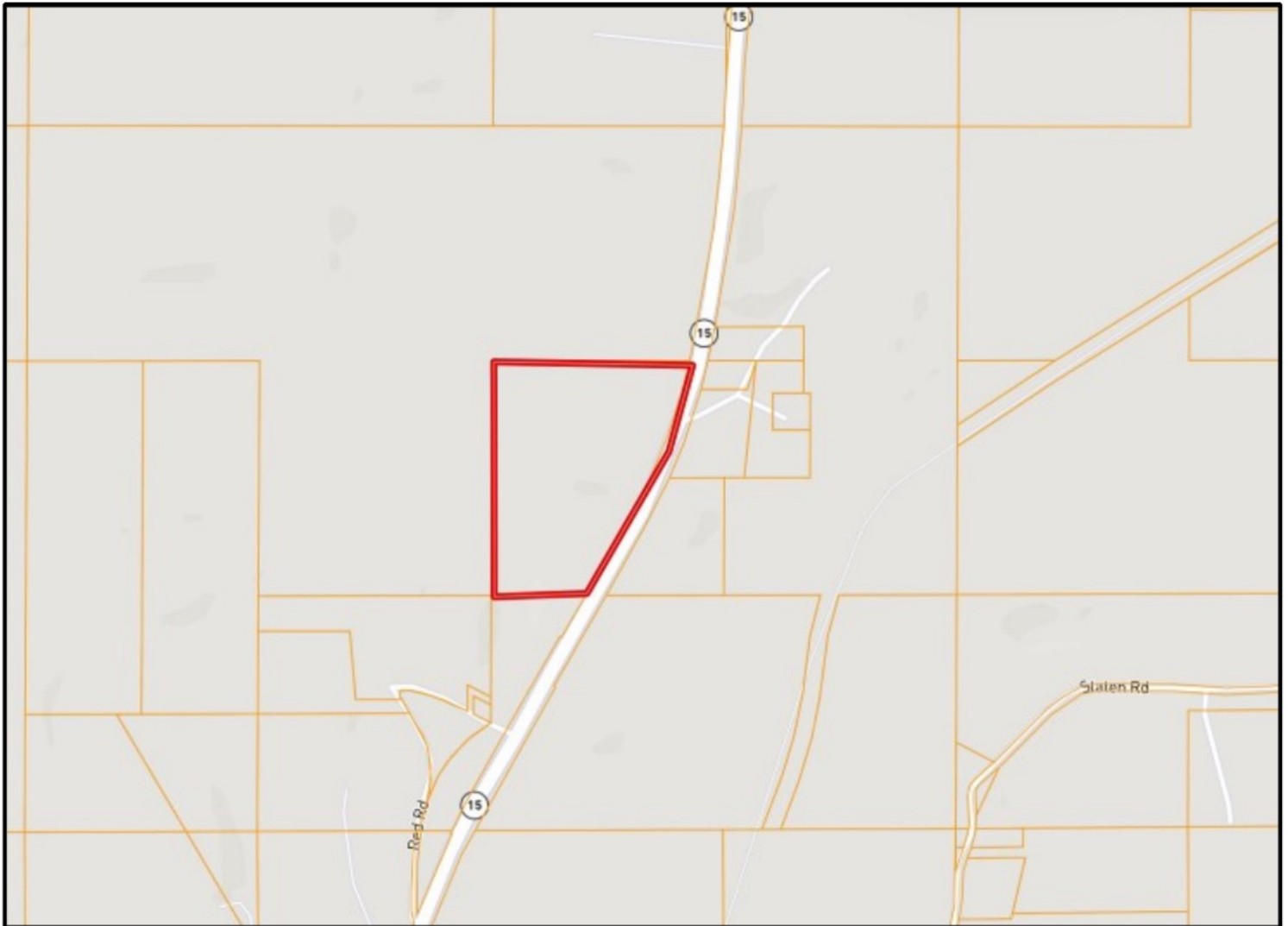
TomSmithLandandHomes.com



Expect More. Get More.



OWNERSHIP MAP



A Real Estate Expert
You Can Trust!

MICHAEL HALFACRE

MANAGING BROKER

O: 662.268.6333 C: 662.242.4220

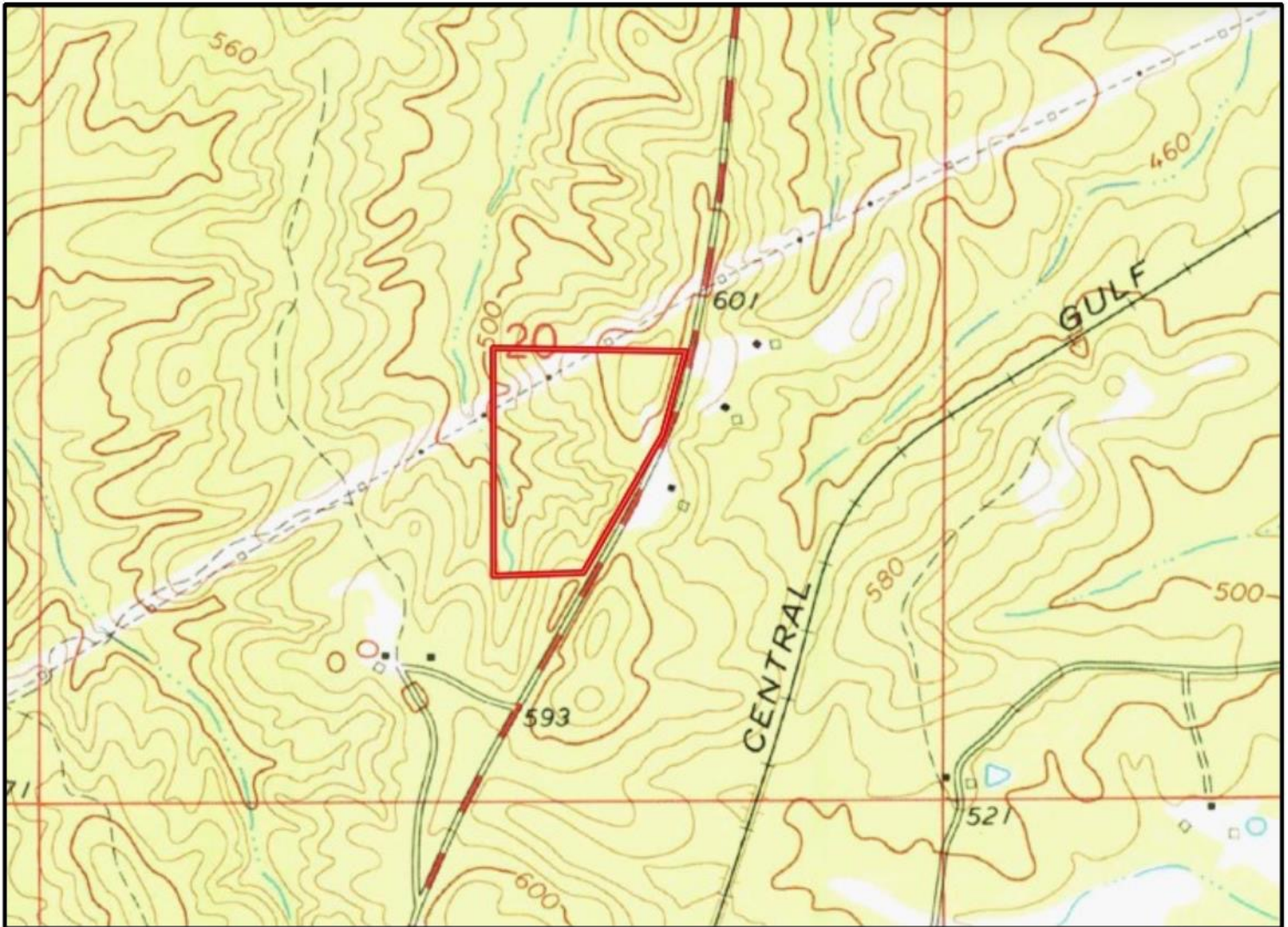
MHalfacre@TomSmithLand.com

TomSmithLandandHomes.com



Expect More. Get More.

TOPOGRAPHY MAP



A Real Estate Expert
You Can Trust!

MICHAEL HALFACRE

MANAGING BROKER

O: 662.268.6333 C: 662.242.4220

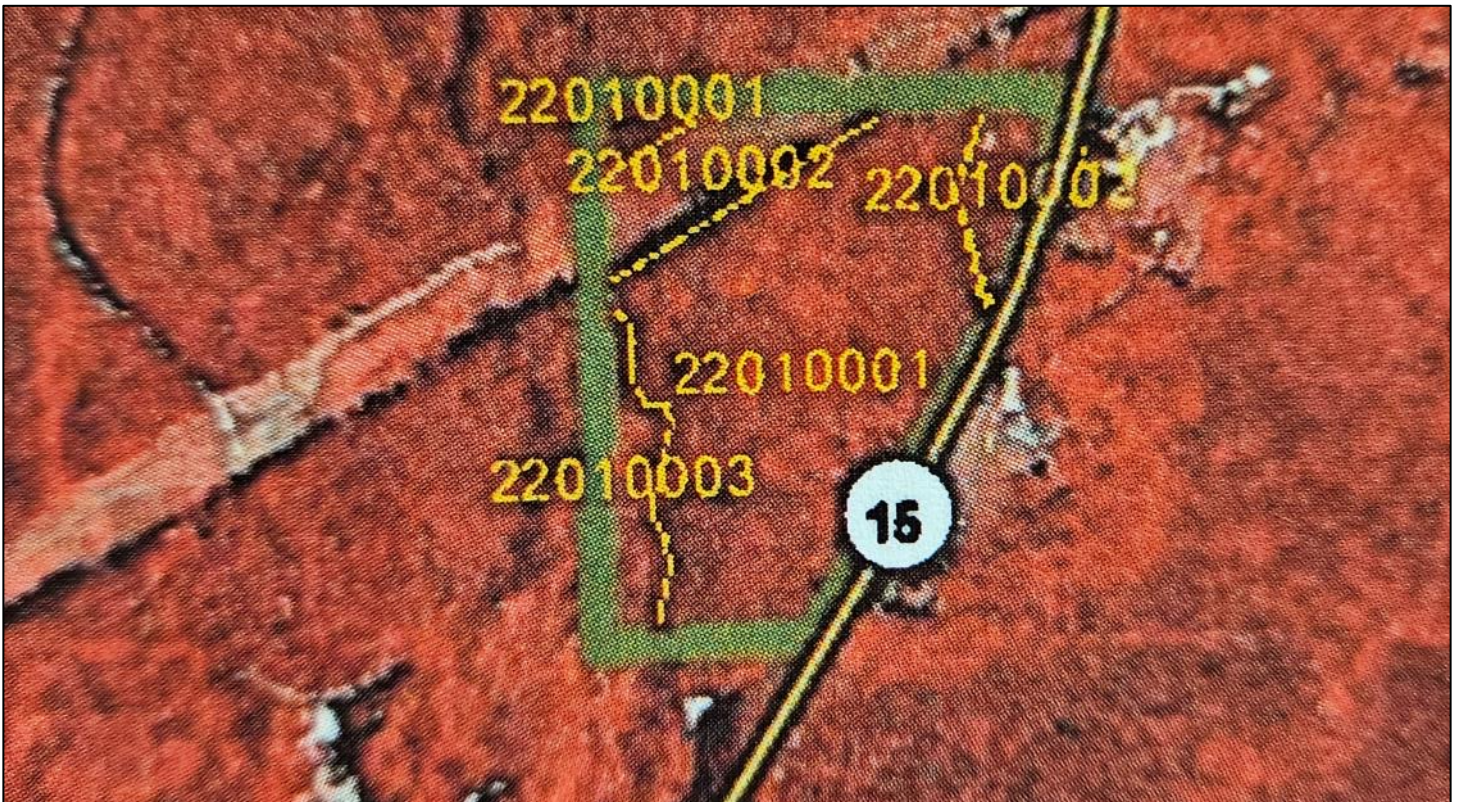
MHalfacre@TomSmithLand.com

TomSmithLandandHomes.com



Expect More. Get More.

INFRARED MAP



STAND	ACRES	ESTABLISHED	TYPE
22010001	18.5	2005	PINE
22010002	5.1	1950	NP UTILITY
22010003	2.7	2005	HARDWOOD

A Real Estate Expert
You Can Trust!

MICHAEL HALFACRE

MANAGING BROKER

O: 662.268.6333 C: 662.242.4220

MHalfacre@TomSmithLand.com

TomSmithLandandHomes.com



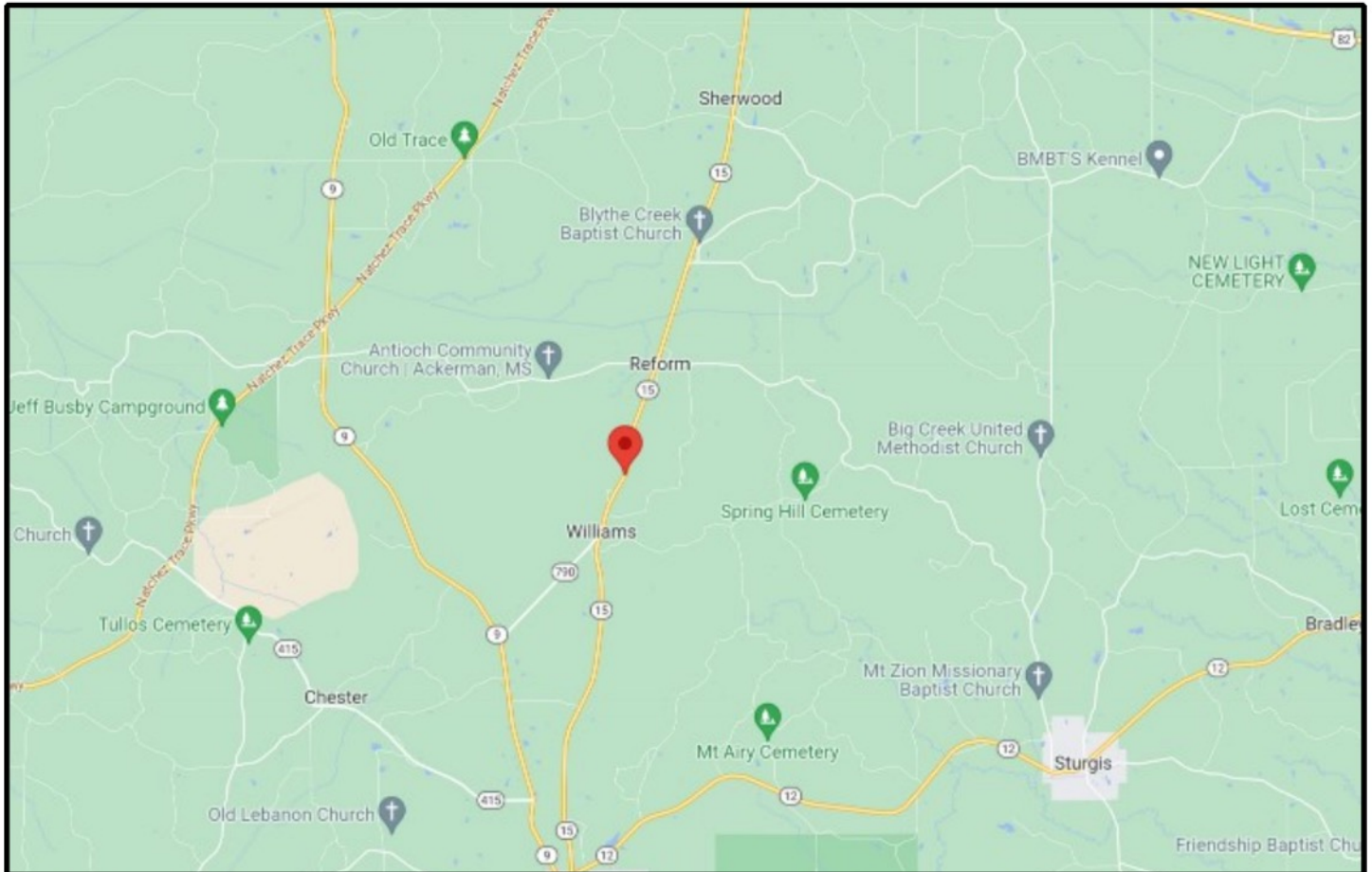
**Tom
Smith**
LAND AND
HOMES
Expect More. Get More.

2011-2024
BEST
BROKERAGES



DIRECTIONAL MAP

Directions from Hwy 12 and Hwy 15 in Ackerman MS: Travel MS-15 North for 6.9 miles. The property will be on your left. [Google Map Link](#)



**MICHAEL
HALFACRE**

MANAGING BROKER

Office: 662.268.6333

Cell: 662.242.4220

MHalfacre@TomSmithLand.com



A Real Estate Expert You Can Trust

TomSmithLandandHomes.com

Information is believed to be accurate but not guaranteed.

