



26.3 ± ACRE RECREATIONAL TRACT IN CHOCTAW COUNTY, MS



\$72,250

Are you looking for a place to play or a small untouched tract of land? Well, here it is! This 26.3+/- acre tract in Choctaw County, MS is what you are looking for. This property could be used to build a dream home with acreage or be turned into a small hunting tract. There is also over 1,500 feet of road frontage on Highway 15, and utilities are available nearby. It is conveniently located within the Choctaw County school district, only 9 minutes from Main Street in Ackerman and 35 minutes from Starkville. Call Michael Cooper for your private showing!

Directions from Hwy 12 and Hwy 15 in Ackerman MS: Travel MS-15 North for 6.9 miles. The property will be on your left. [Google Map Link](#)



MICHAEL COOPER
REALTOR®
Office: 662.268.6333
Cell: 662.285.8686
MCooper@TomSmithLand.com



A Real Estate Expert You Can Trust

TomSmithLandandHomes.com



MICHAEL COOPER REALTOR® Office: 662.268.6333 Cell: 662.285.8686 MCooper@TomSmithLand.com



A Real Estate Expert You Can Trust

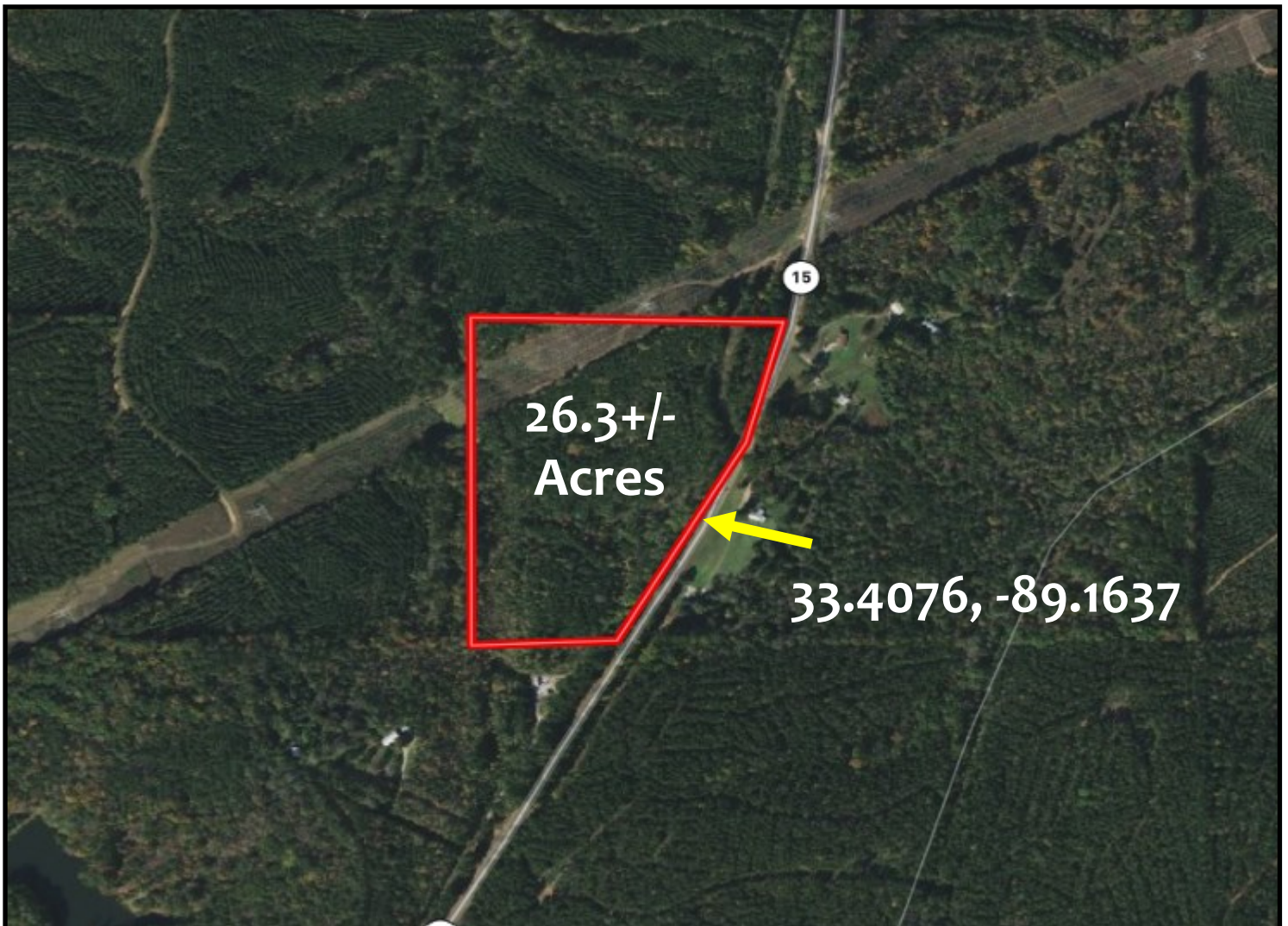
TomSmithLandandHomes.com

2011-2023



AERIAL MAP

[Click Here for Interactive Map](#)



**MICHAEL
COOPER**
REALTOR®

Office: 662.268.6333
Cell: 662.285.8686
MCooper@TomSmithLand.com

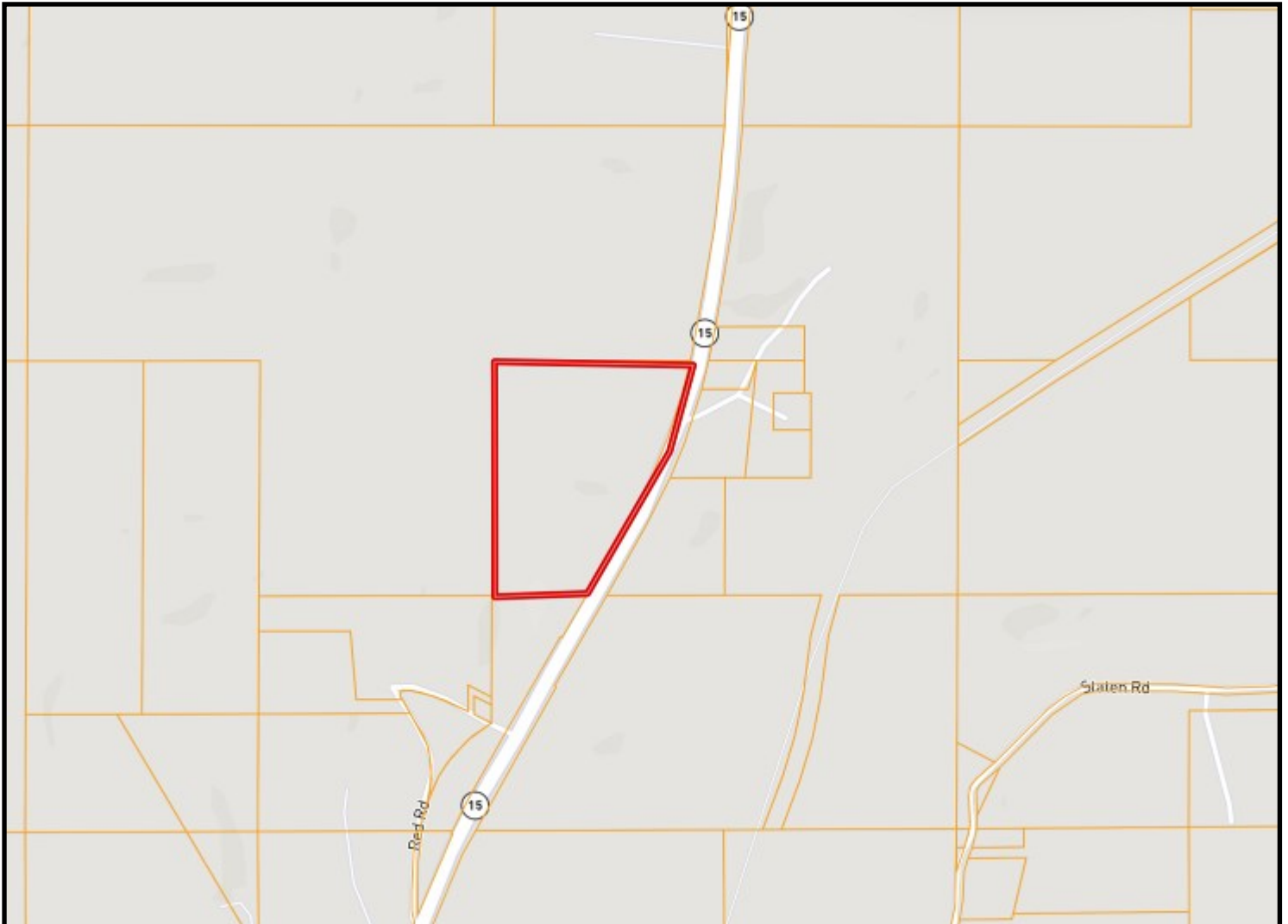


A Real Estate Expert You Can Trust

TomSmithLandandHomes.com



OWNERSHIP MAP



**MICHAEL
COOPER**
REALTOR®

Office: 662.268.6333
Cell: 662.285.8686
MCooper@TomSmithLand.com

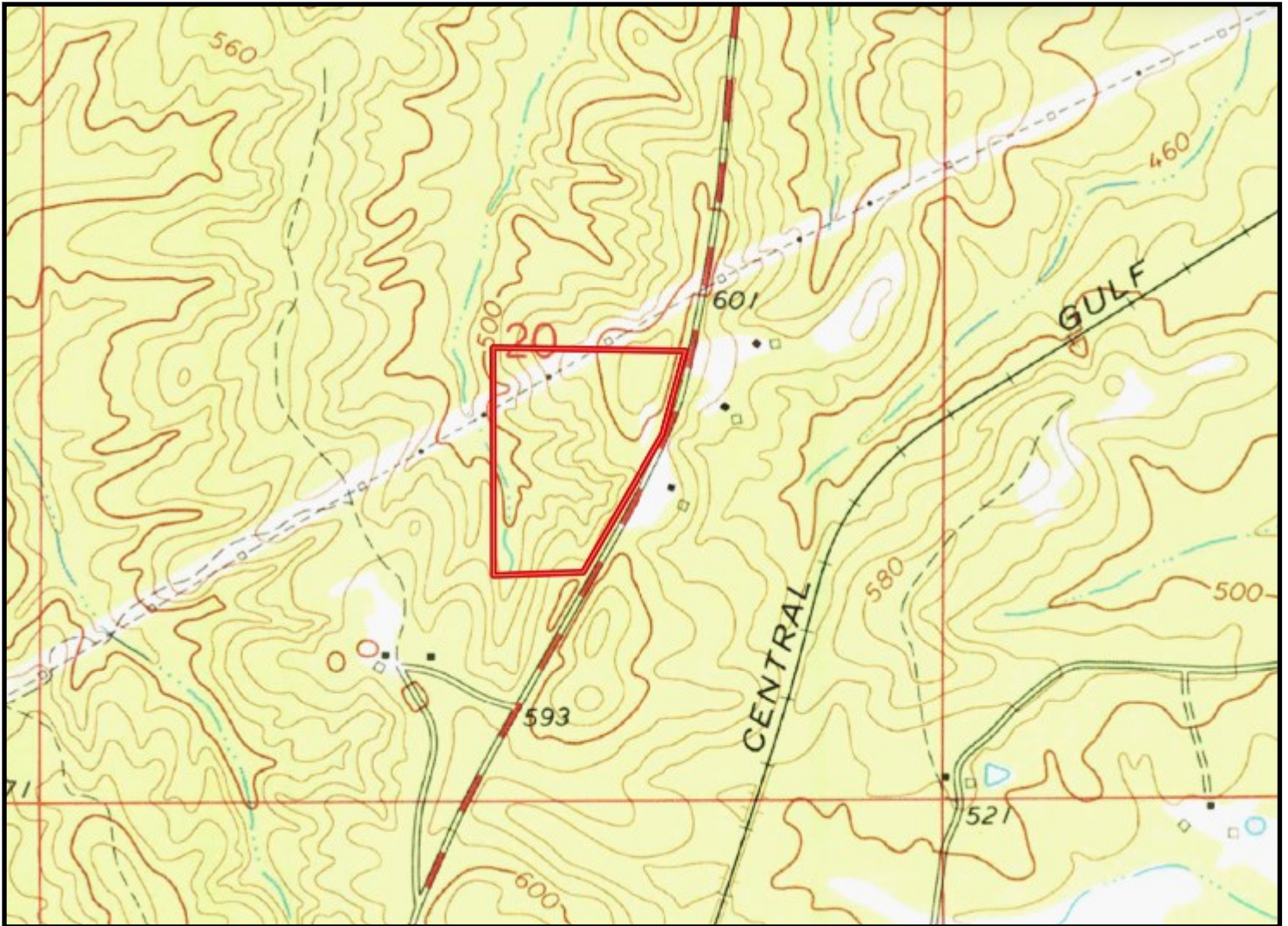


A Real Estate Expert You Can Trust

TomSmithLandandHomes.com



TOPOGRAPHY MAP



MICHAEL COOPER
REALTOR®
Office: 662.268.6333
Cell: 662.285.8686
MCooper@TomSmithLand.com



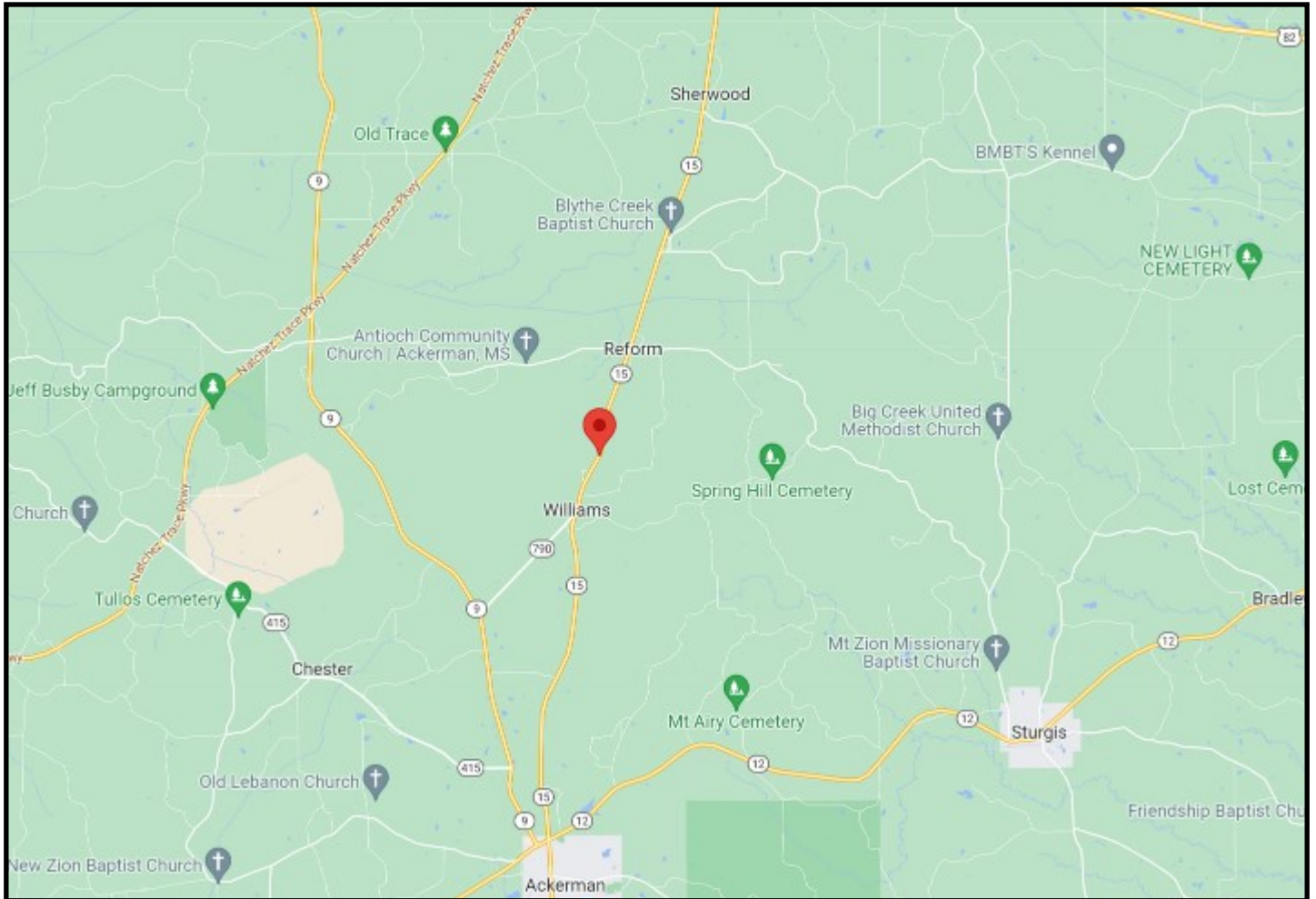
A Real Estate Expert You Can Trust

TomSmithLandandHomes.com



DIRECTIONAL MAP

Directions from Hwy 12 and Hwy 15 in Ackerman MS: Travel MS-15 North for 6.9 miles. The property will be on your left. [Google Map Link](#)



MICHAEL COOPER
REALTOR®

Office: 662.268.6333
Cell: 662.285.8686
MCooper@TomSmithLand.com



A Real Estate Expert You Can Trust

TomSmithLandandHomes.com