



84.47+/- ACRE TIMBERLAND TRACT IN CHOCTAW COUNTY, MS



\$237,998

Are you looking for a good investment that could be much more? Well, here it is! This 84.47+/- acre property in Choctaw County, MS, consists of 33+/- acres of pine (timber reserved by seller and not included in land sale), 43+/- acres of pines planted in 2004, and 11+/- acres of hardwood over 70 years old.. There is an internal road system throughout, giving you access to all areas of the property. This property could be used to build a dream home on acreage within the city limits of Ackerman or to build several homes to develop. There are also over 300 feet of road frontage on Highway 12 and over 1,100 feet on South Union Road, and utilities are available. This property is conveniently located within the Choctaw County school district, just three minutes from Main Street in Ackerman and thirty minutes from Starkville. Call Leland Selby today for your private showing!



**LELAND
SELBY**
REALTOR®

Office: 662.268.6333

Cell: 662.394.9876

Leland@TomSmithLand.com



A Real Estate Expert You Can Trust

TomSmithLandandHomes.com



A Real Estate Expert *You Can Trust!*

LELAND SELBY
REALTOR®

O: 662.268.6333 C: 662.394.9876

Leland@TomSmithLand.com

TomSmithLandandHomes.com



Expect More. Get More.



A Real Estate Expert
You Can Trust!

LELAND SELBY
REALTOR®
O: 662.268.6333 C: 662.394.9876
Leland@TomSmithLand.com
TomSmithLandandHomes.com





AERIAL MAP



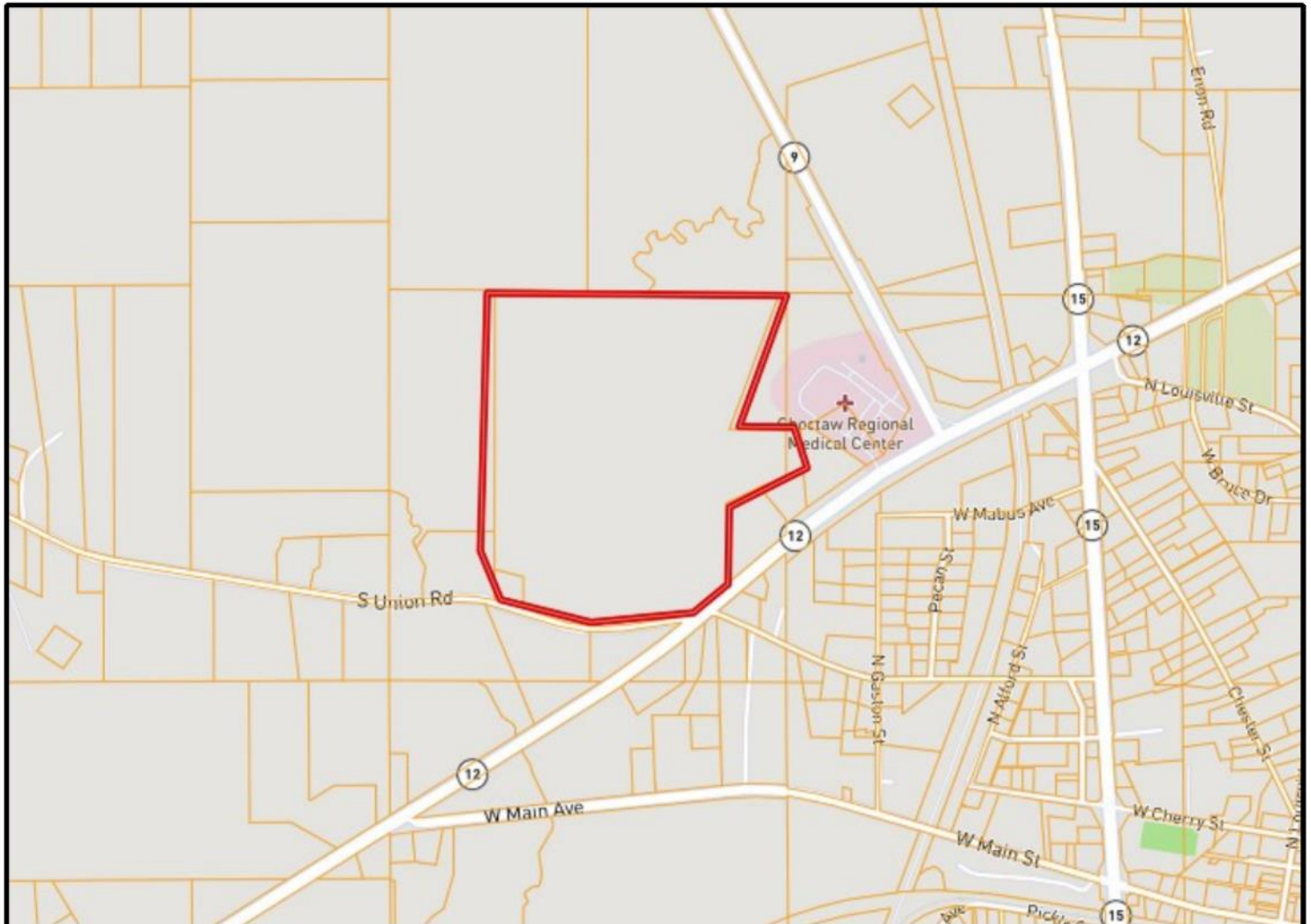
A Real Estate Expert
You Can Trust!

LELAND SELBY
REALTOR®
O: 662.268.6333 C: 662.394.9876
Leland@TomSmithLand.com
TomSmithLandandHomes.com





OWNERSHIP MAP



A Real Estate Expert
You Can Trust!

LELAND SELBY
REALTOR®

O: 662.268.6333 C: 662.394.9876

Leland@TomSmithLand.com

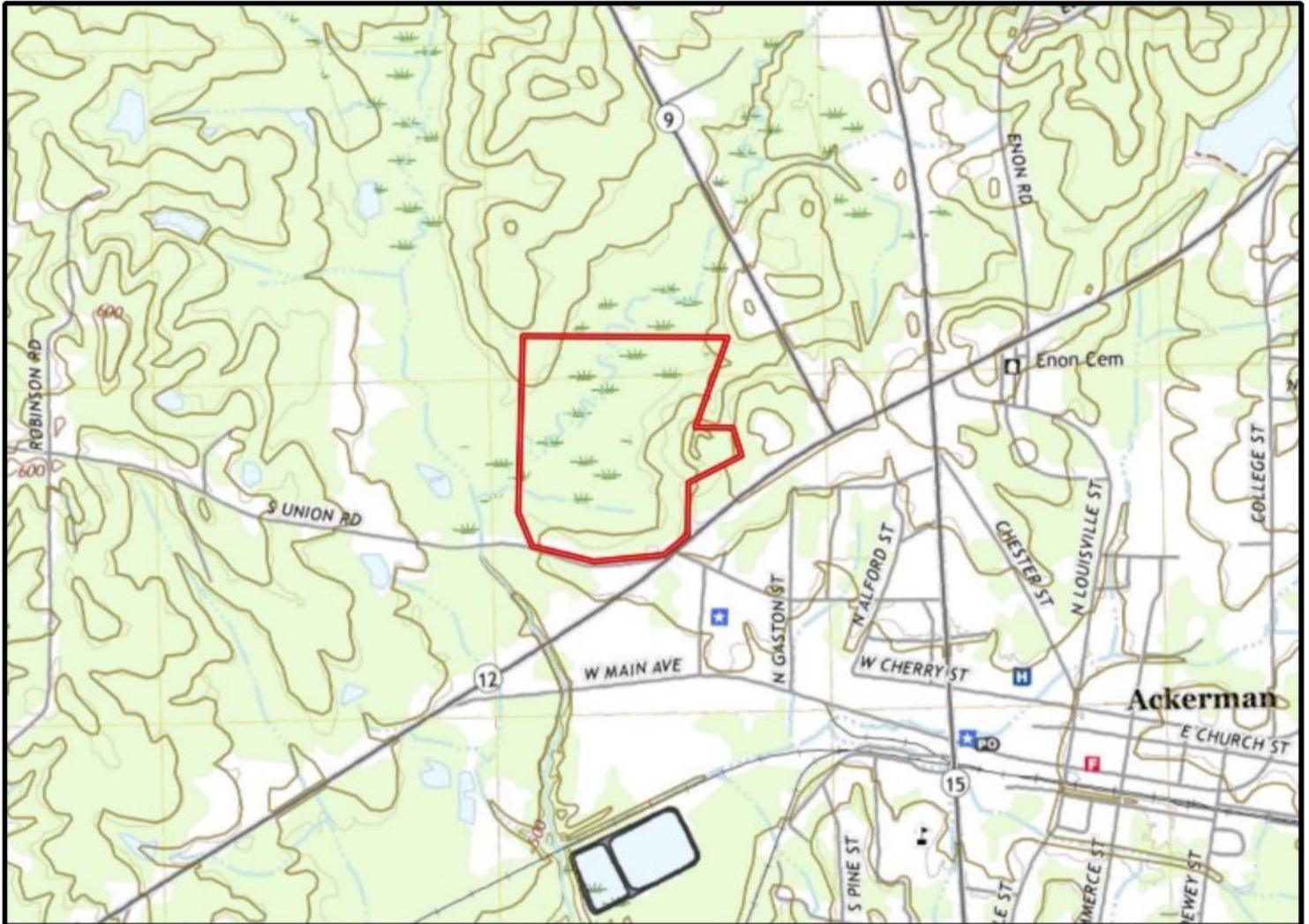
TomSmithLandandHomes.com



Expect More. Get More.



TOPOGRAPHY MAP



A Real Estate Expert
You Can Trust!

LELAND SELBY
REALTOR®
O: 662.268.6333 C: 662.394.9876
Leland@TomSmithLand.com
TomSmithLandandHomes.com





INFRARED MAP



| Stand | Acres | Established | Type |
|----------|-------|----------------|----------|
| 22008001 | 33.8 | Timber Reserve | |
| 22008002 | 43.1 | 2004 | PINE |
| 22008003 | 11.7 | 1950 | HARDWOOD |

A Real Estate Expert
You Can Trust!

LELAND SELBY
REALTOR®

O: 662.268.6333 C: 662.394.9876

Leland@TomSmithLand.com

TomSmithLandandHomes.com

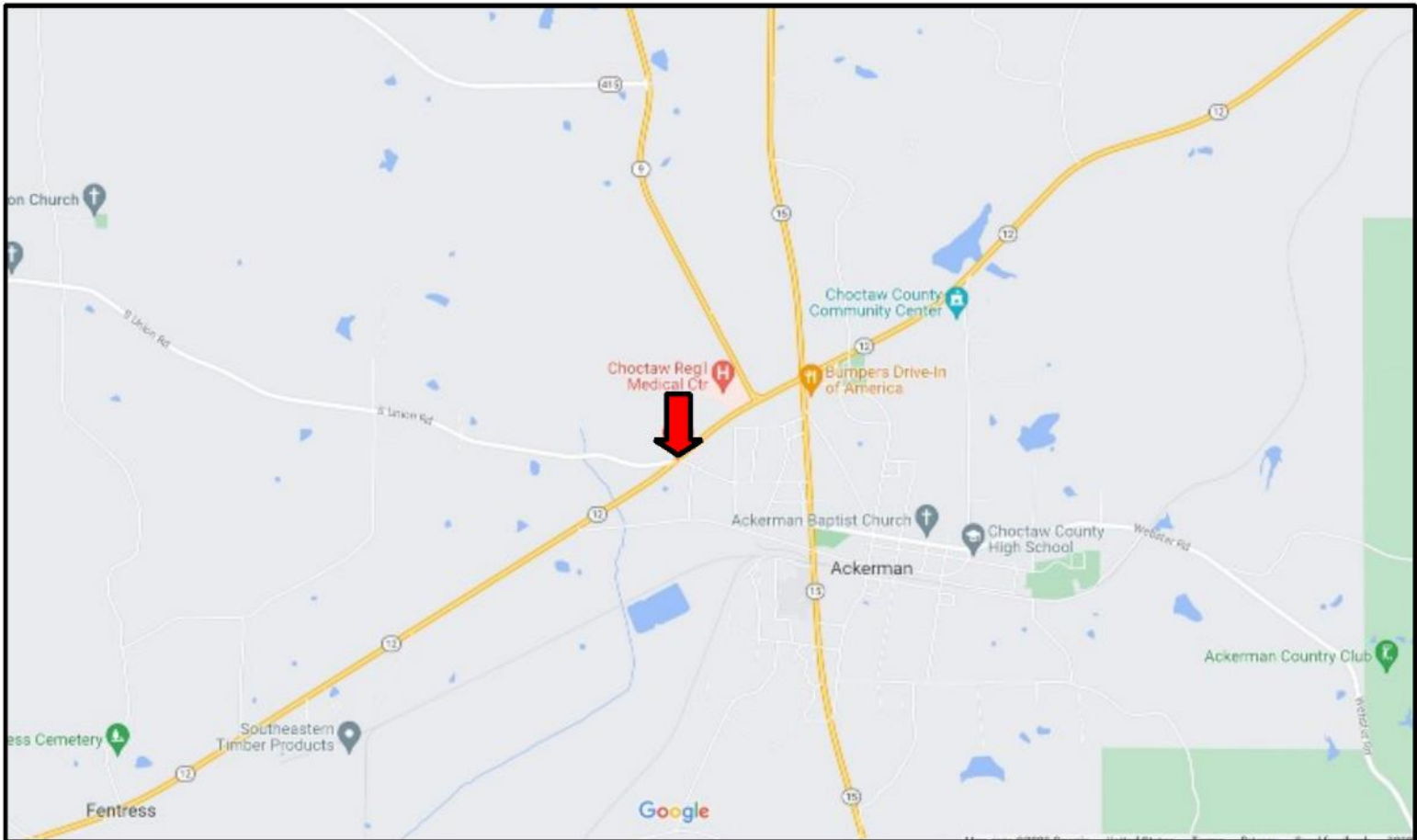


Expect More. Get More.



DIRECTIONAL MAP

Directions from Hwy 15 and West Main Street in Ackerman MS: Travel West Main Avenue for 1.1 miles. Turn right onto MS-12 East. Travel .5 miles then the property will be on your left. [Google Map Link](#)



**LELAND
SELBY**

REALTOR®

Office: 662.268.6333

Cell: 662.394.9876

Leland@TomSmithLand.com



A Real Estate Expert You Can Trust

TomSmithLandandHomes.com