



87.1 +/- Acre Recreational Tract in Neshoba County, MS



\$170,850



Look at this 87.1 +/- Acre property located in Neshoba County, MS. Situated 10 minutes from Philadelphia, MS, this property offers a rolling topography that can be your next hunting/recreational paradise. Clear-cut in 2019 and planted in 2020, this property offers plenty of cover and food for various wildlife species. Divided by County Road 282, access to this property is effortless. It is the perfect blank canvas for any outdoor enthusiast looking to build a hunting oasis or a potential homesite. Utilities are available on County Road 282. For more information or to schedule a showing, contact Tyler Kilgore today!

Directions from intersection of MS-19 S and Main St in Philadelphia, MS: Travel south on MS-19 for 8.4 miles. Make a right turn onto County Road 282 and travel 0.1 miles. The property is on both sides of road and marked with signs.



TYLER KILGORE
REALTOR®
Office: 662.268.6333
Cell: 601.562.0688
Tyler@TomSmithLand.com



A Real Estate Expert You Can Trust

TomSmithLandandHomes.com





TYLER KILGORE
REALTOR®
Office: 662.268.6333
Cell: 601.562.0688
Tyler@TomSmithLand.com



A Real Estate Expert You Can Trust
TomSmithLandandHomes.com

Information is believed to be accurate but not guaranteed.

1st Report
2011-2023
BEST
BROKERAGES



TYLER KILGORE
REALTOR®

Office: 662.268.6333
Cell: 601.562.0688
Tyler@TomSmithLand.com



A Real Estate Expert You Can Trust

TomSmithLandandHomes.com

Information is believed to be accurate but not guaranteed.





TYLER KILGORE
REALTOR®
Office: 662.268.6333
Cell: 601.562.0688
Tyler@TomSmithLand.com



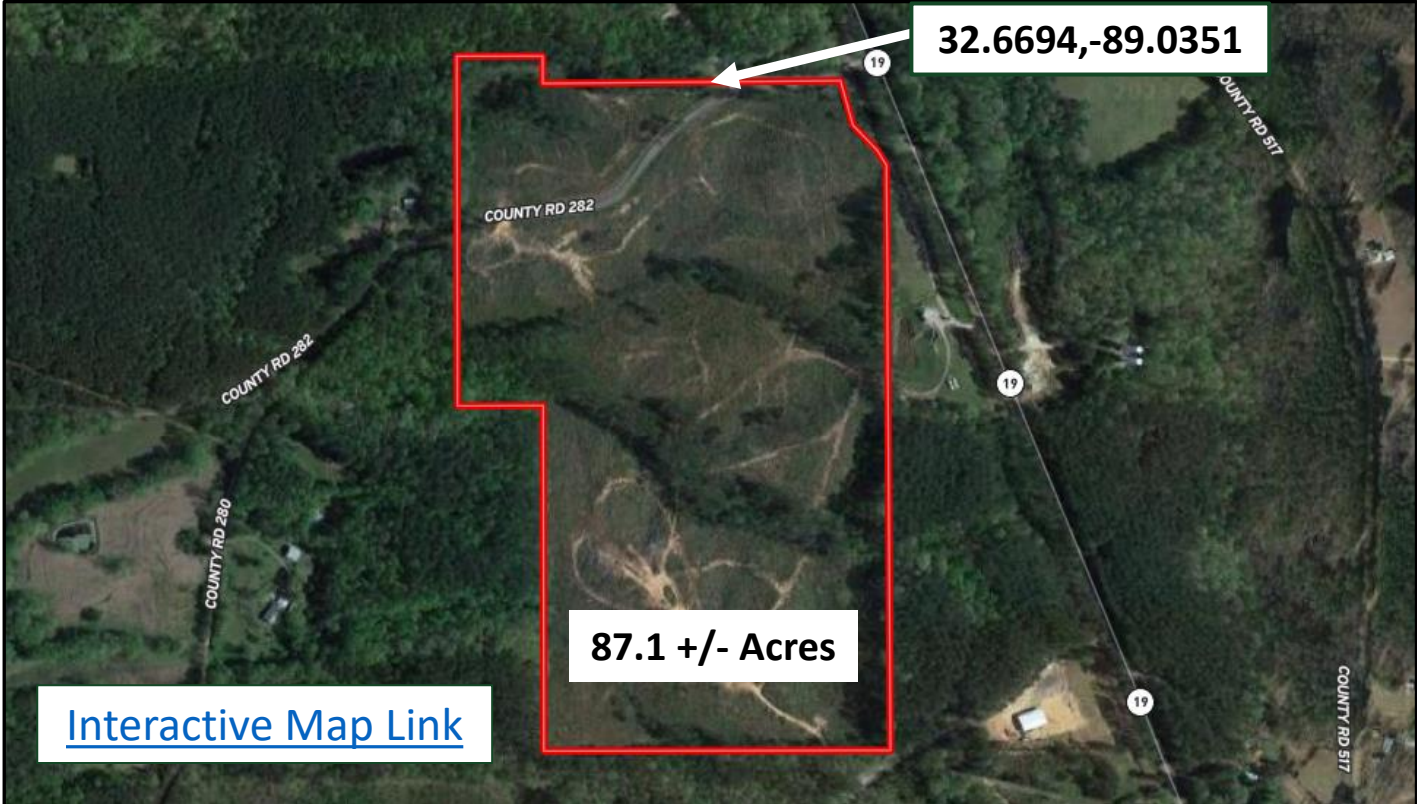
A Real Estate Expert You Can Trust
TomSmithLandandHomes.com

Information is believed to be accurate but not guaranteed.

100Report
2011-2023
BEST
BROKERAGES



Aerial Map



32.6694,-89.0351

87.1 +/- Acres

[Interactive Map Link](#)



TYLER KILGORE
REALTOR®

Office: 662.268.6333
Cell: 601.562.0688
Tyler@TomSmithLand.com



A Real Estate Expert You Can Trust

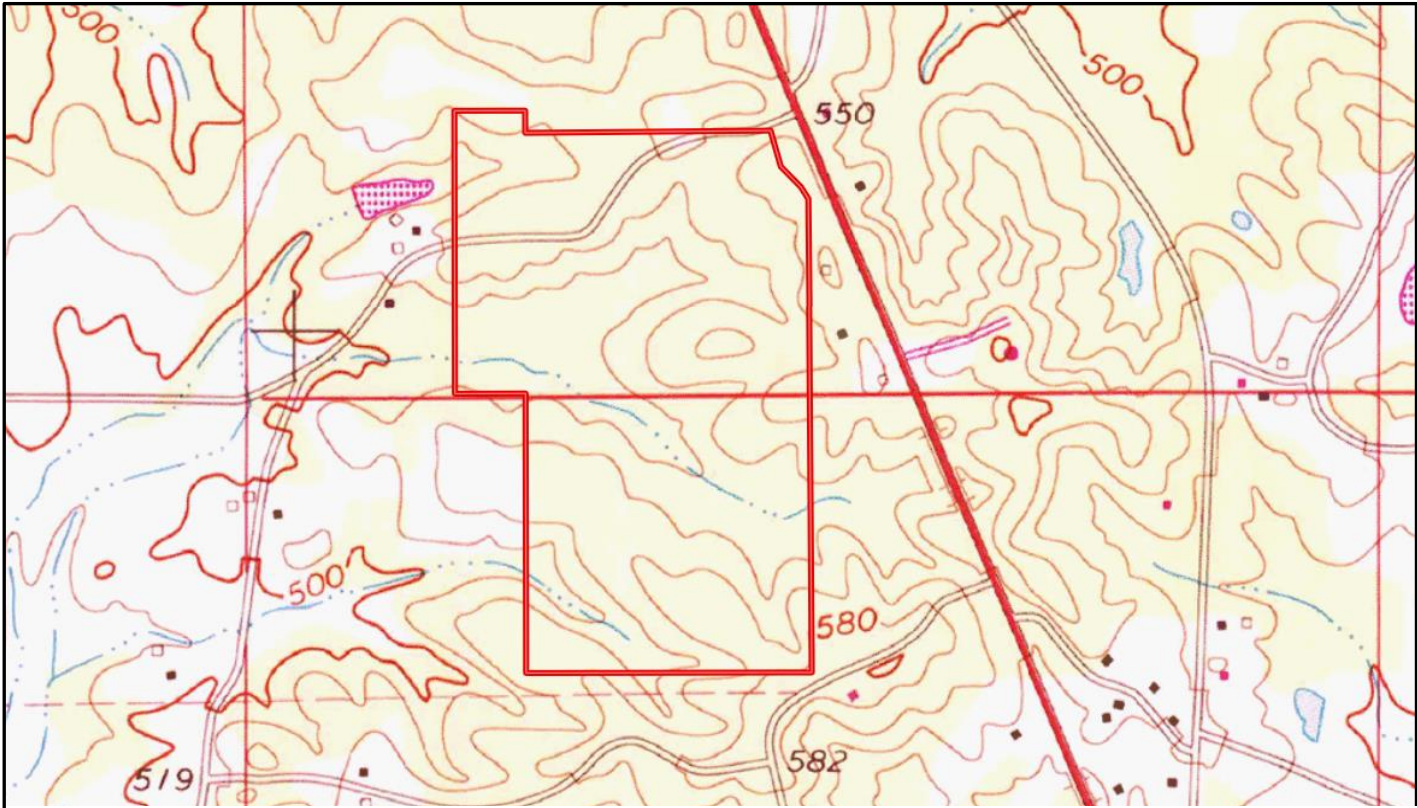
TomSmithLandandHomes.com

Information is believed to be accurate but not guaranteed.





Topo Map



TYLER KILGORE
REALTOR®
Office: 662.268.6333
Cell: 601.562.0688
Tyler@TomSmithLand.com



A Real Estate Expert You Can Trust

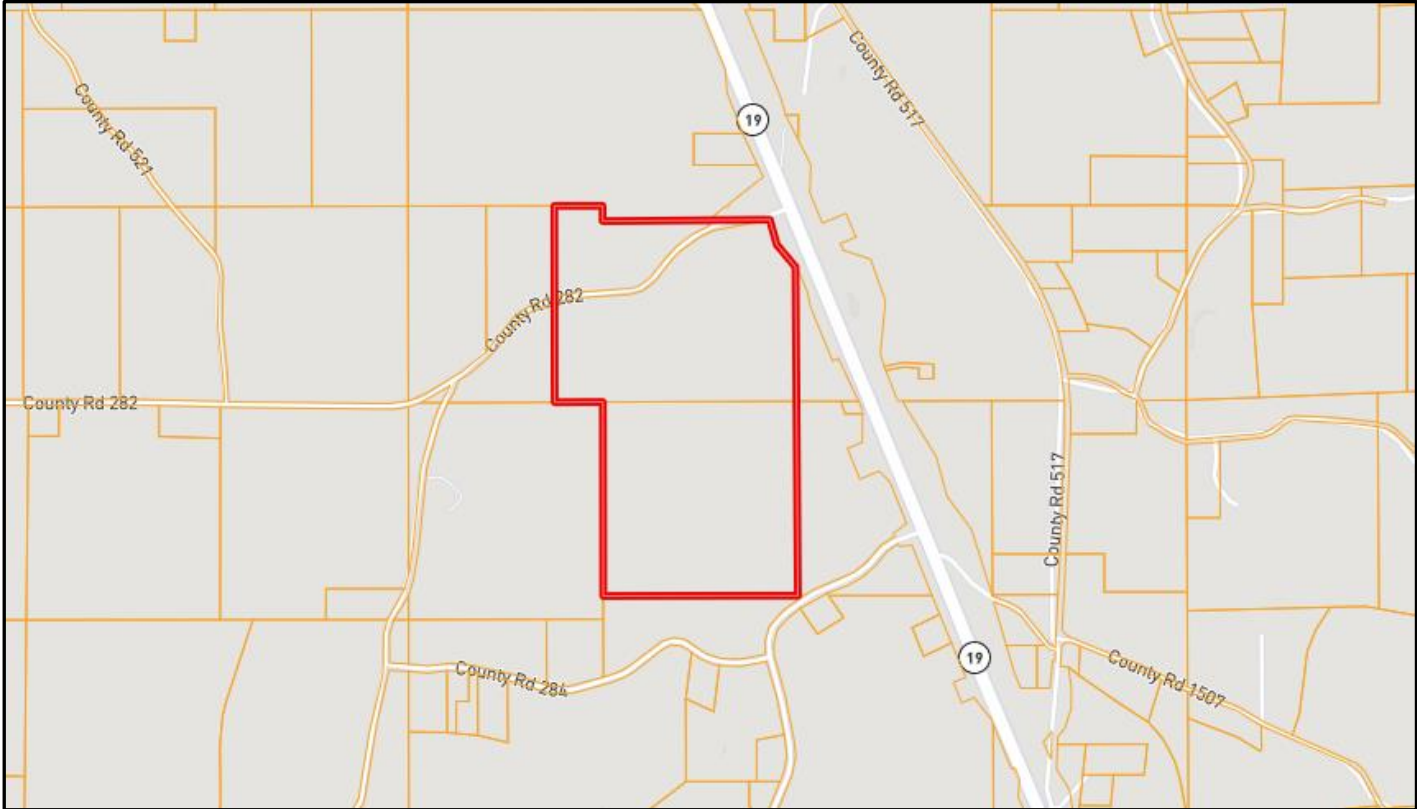
TomSmithLandandHomes.com

Information is believed to be accurate but not guaranteed.





Ownership Map



TYLER KILGORE
REALTOR®
Office: 662.268.6333
Cell: 601.562.0688
Tyler@TomSmithLand.com

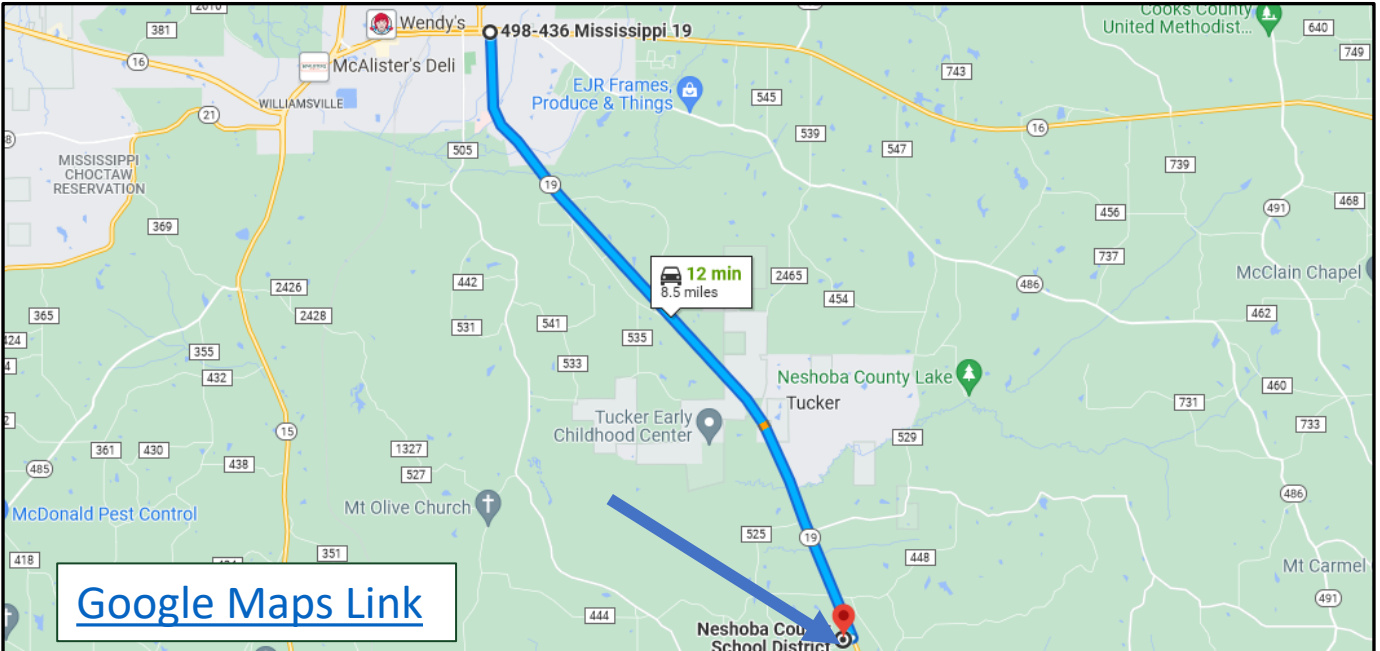


A Real Estate Expert You Can Trust
TomSmithLandandHomes.com





Directional Map



Directions from intersection of MS-19 S and Main St in Philadelphia, MS: Travel south on MS-19 for 8.4 miles. Make a right turn onto County Road 282 and travel 0.1 miles. The property is on both sides of road and marked with signs.



TYLER KILGORE
REALTOR®
Office: 662.268.6333
Cell: 601.562.0688
Tyler@TomSmithLand.com



A Real Estate Expert You Can Trust

TomSmithLandandHomes.com

Information is believed to be accurate but not guaranteed.

