

1 EQUITY SHARE

Jack's Slough Hunting Club

MONTGOMERY COUNTY, MS

\$115,000



call me today!

CHARLIE HEINSZ, REALTOR®

Charlie@TomSmithLand.com

662.441.2500 office | 662.719.7218 cell



Expect More. Get More.

TomSmithLandandHomes.com

information is believed to be accurate but not guaranteed.



Equity Share - Jack's Slough Hunting Club Montgomery County, MS

Jack's Slough Hunting Club was established in 1980 near Stewart, MS on the Big Black River. The club offers Trophy Deer, Turkey, Ducks and Hog hunting along with all the native small game, and good fishing on the river or north and south canals. In 1986 the membership began purchasing the land they were hunting as it became available and now owns a little over 1800 acres and leases approximately 2700 acres.

The club currently has 26 shares with each owner having an undivided 1/26 interest or 69.5 acres per share. The current amount of huntable acres is 4500 with yearly dues of \$2700 per share holder. The revenue from dues is used to pay club expenses such as leases, taxes, repairs and general maintenance. Each membership comes with a lot for a mobile home or camper. A deer management program has been in effect at the club for several years with minimum standards and a liberal harvest set to maintain a quality deer herd.

Call or email Charlie Heinsz to schedule your private showing 662-719-7218 or 662-441-2500
Charlie@TomSmithLand.com



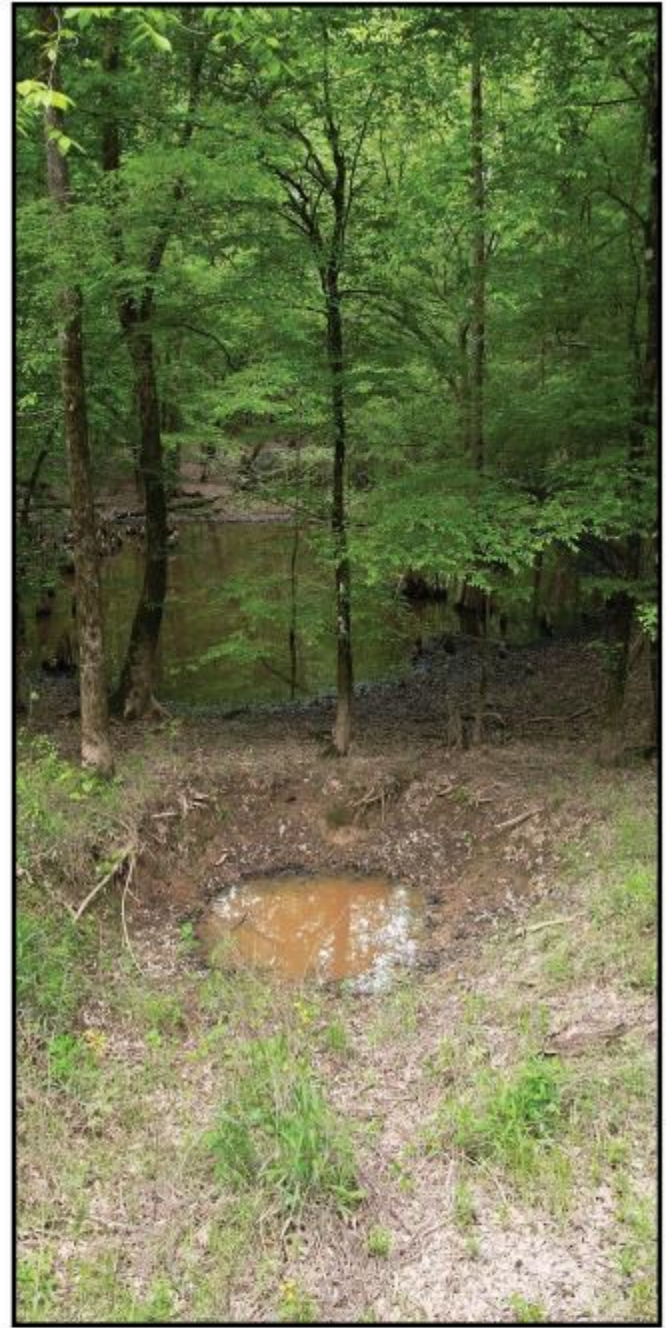
call me today!

CHARLIE HEINSZ, REALTOR®
Charlie@TomSmithLand.com
662.441.2500 office | 662.719.7218 cell



TomSmithLandandHomes.com

information is believed to be accurate but not guaranteed.



2011-2020
BEST
REALTOR

Call me today!

CHARLIE HEINSZ, REALTOR®
 Charlie@TomSmithLand.com
 662.441.2500 office | 662.719.7218 cell



TomSmithLandandHomes.com

Information is believed to be accurate, but not guaranteed.



Call me today!

CHARLIE HEINSZ, REALTOR®

Charlie@TomSmithLand.com

662.441.2500 office | 662.719.7218 cell



Expect More. Get More.

TomSmithLandandHomes.com

Information is believed to be accurate but not guaranteed.



call me today!

CHARLIE HEINSZ, REALTOR®

Charlie@TomSmithLand.com

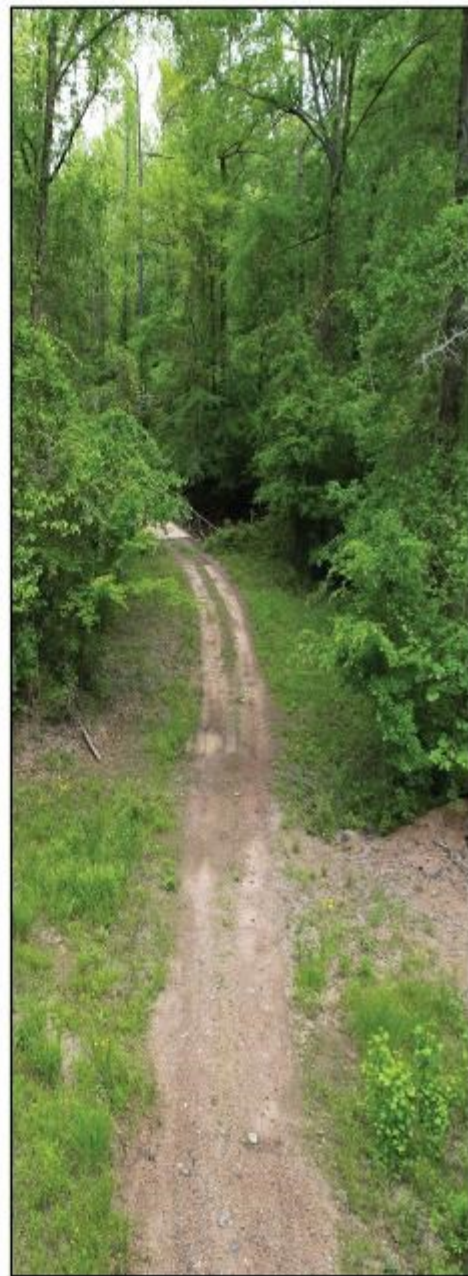
662.441.2500 office | 662.719.7218 cell



Expect More. Get More.

TomSmithLandandHomes.com

information is believed to be accurate but not guaranteed.



call me today!

CHARLIE HEINSZ, REALTOR®

Charlie@TomSmithLand.com

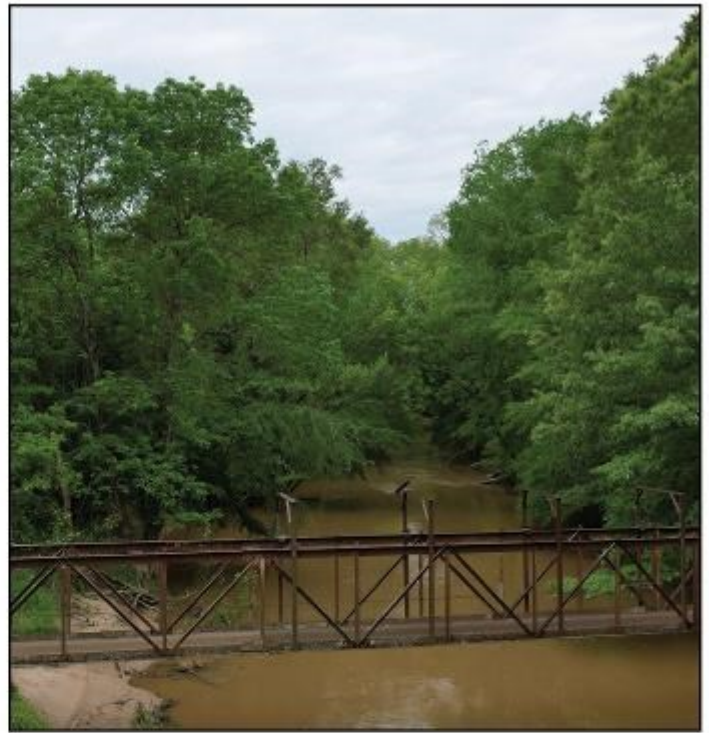
662.441.2500 office | 662.719.7218 cell



Expect More. Get More.

TomSmithLandandHomes.com

Information is believed to be accurate but not guaranteed.



call me today!

CHARLIE HEINSZ, REALTOR®
 Charlie@TomSmithLand.com
 662.441.2500 office | 662.719.7218 cell



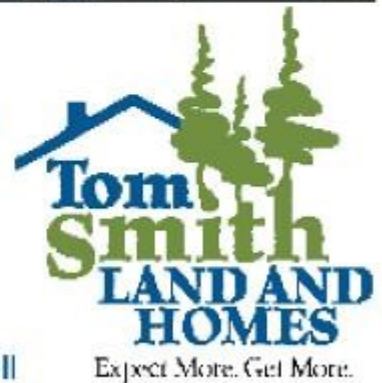
TomSmithLandandHomes.com

information is believed to be accurate but not guaranteed.



call me today!

CHARLIE HEINSZ, REALTOR®
 Charlie@TomSmithLand.com
 662.441.2500 office | 662.719.7218 cell



TomSmithLandandHomes.com

information is believed to be accurate but not guaranteed.



call me today!

CHARLIE HEINSZ, REALTOR®

Charlie@TomSmithLand.com

662.441.2500 office | 662.719.7218 cell



Expect More. Get More.



TomSmithLandandHomes.com

information is believed to be accurate but not guaranteed.



call me today!

CHARLIE HEINSZ, REALTOR®

Charlie@TomSmithLand.com

662.441.2500 office | 662.719.7218 cell



Expect More. Get More.

TomSmithLandandHomes.com

information is believed to be accurate but not guaranteed.



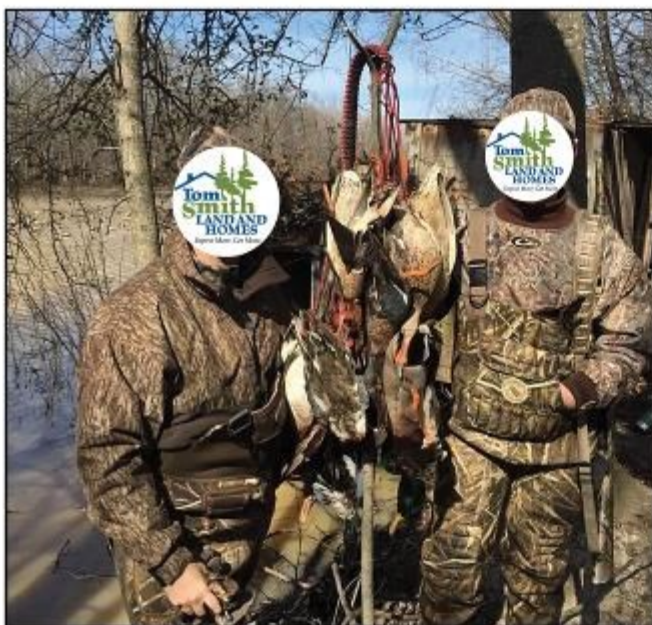
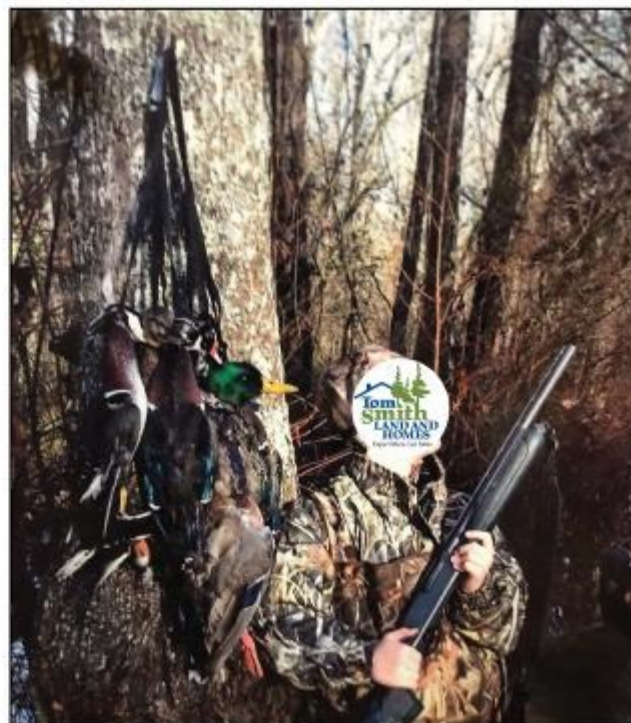
call me today!

CHARLIE HEINSZ, REALTOR®
 Charlie@TomSmithLand.com
 662.441.2500 office | 662.719.7218 cell



TomSmithLandandHomes.com

information is believed to be accurate but not guaranteed.



call me today!

CHARLIE HEINSZ, REALTOR®

Charlie@TomSmithLand.com

662.441.2500 office | 662.719.7218 cell



Expect More. Get More.

TomSmithLandandHomes.com

information is believed to be accurate but not guaranteed.



call me today!

CHARLIE HEINSZ, REALTOR®

Charlie@TomSmithLand.com

662.441.2500 office | 662.719.7218 cell



Expect More. Get More.

TomSmithLandandHomes.com

information is believed to be accurate but not guaranteed.



call me today!

CHARLIE HEINSZ, REALTOR®

Charlie@TomSmithLand.com

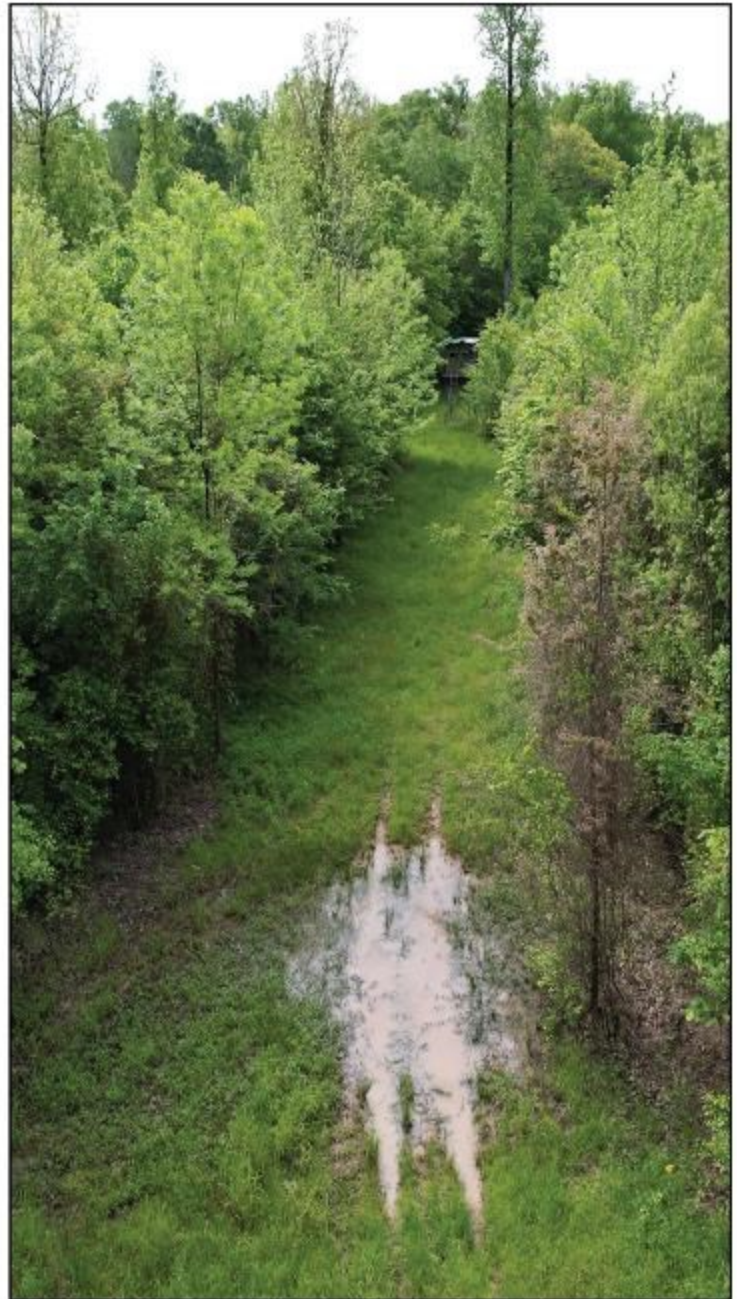
662.441.2500 office | 662.719.7218 cell



Expect More. Get More.

TomSmithLandandHomes.com

information is believed to be accurate but not guaranteed.



call me today!

CHARLIE HEINSZ, REALTOR®

Charlie@TomSmithLand.com

662.441.2500 office | 662.719.7218 cell

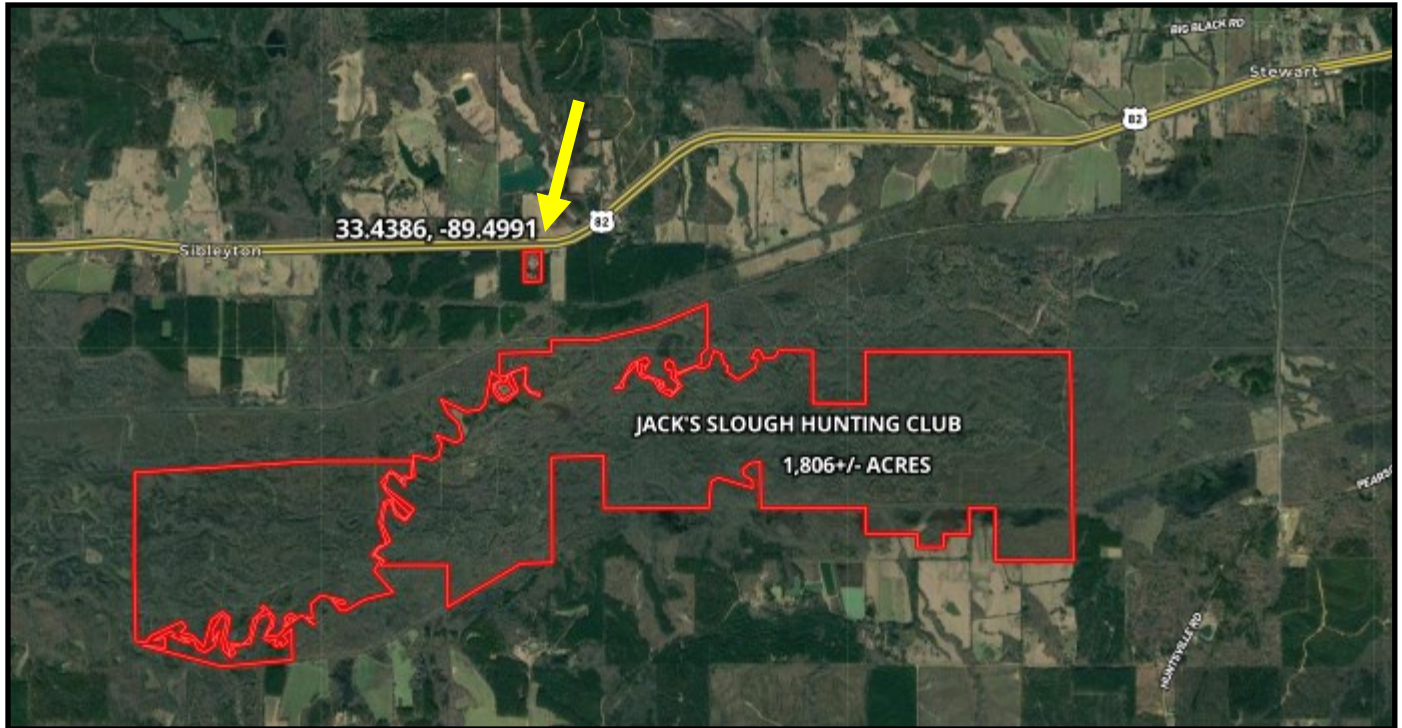


Expect More. Get More.

TomSmithLandandHomes.com

information is believed to be accurate but not guaranteed.

AERIAL MAP



[Click Here for an Interactive Map](#)



call me today!

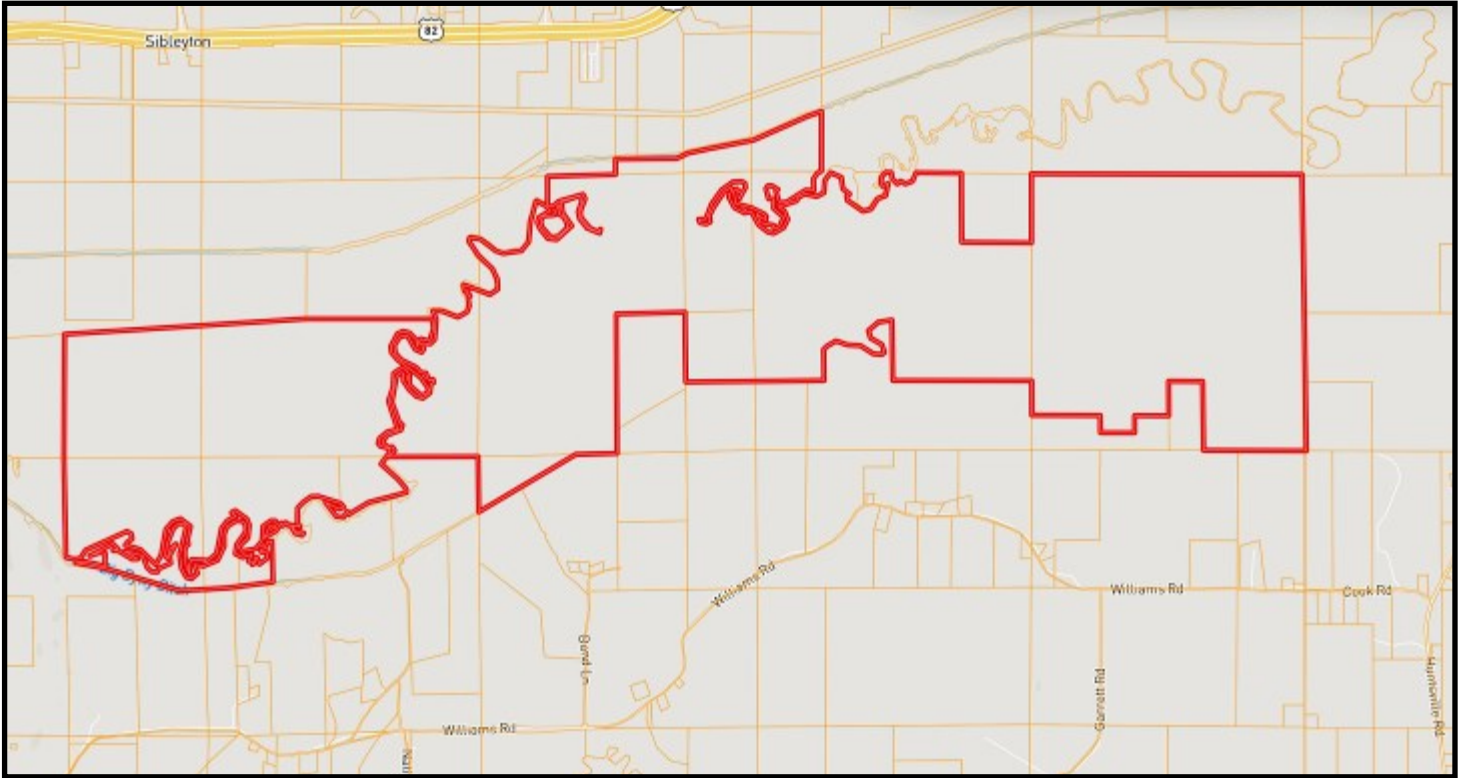
CHARLIE HEINSZ, REALTOR®
Charlie@TomSmithLand.com
662.441.2500 office | 662.719.7218 cell



TomSmithLandandHomes.com

Information is believed to be accurate but not guaranteed.

OWNERSHIP MAP



call me today!

CHARLIE HEINSZ, REALTOR®

Charlie@TomSmithLand.com

662.441.2500 office | 662.719.7218 cell

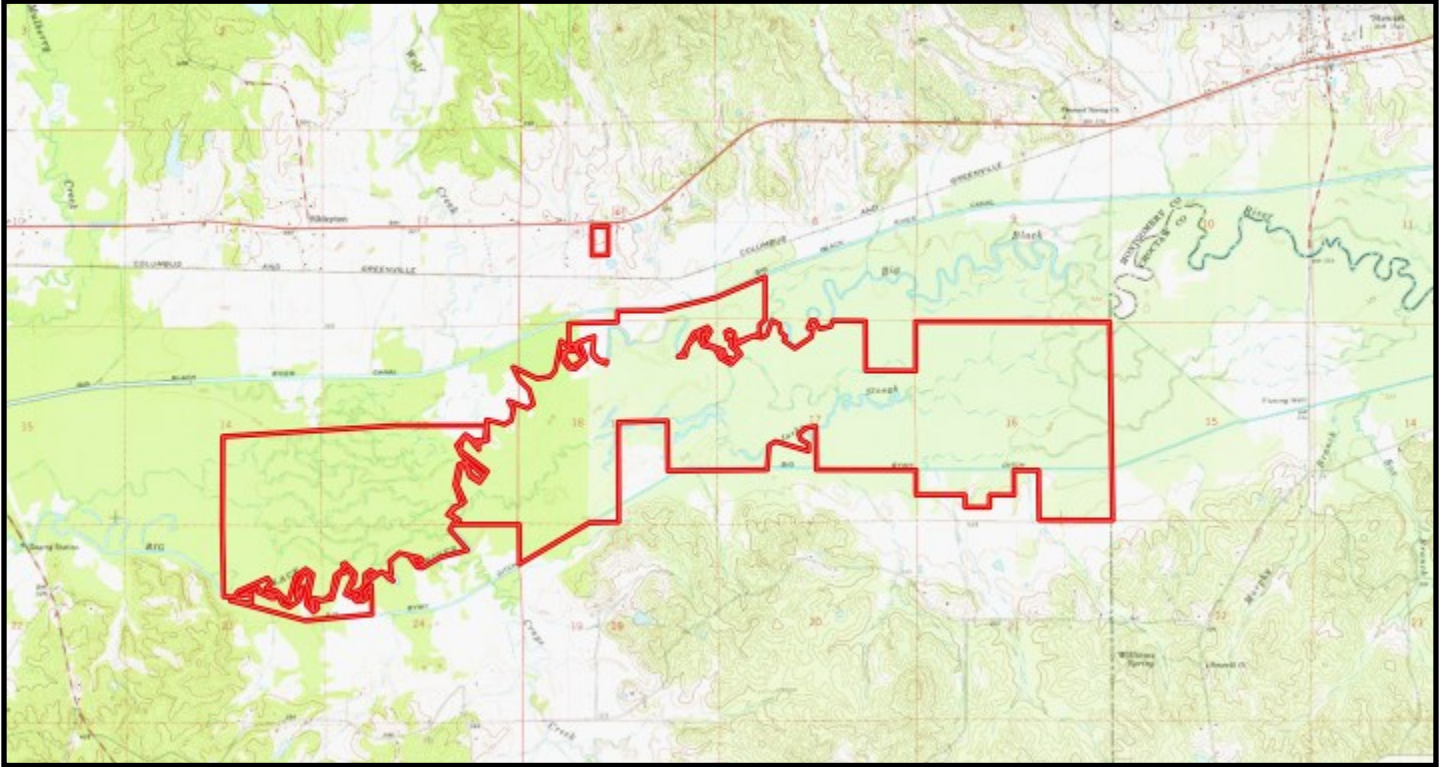


Expect More. Get More.

TomSmithLandandHomes.com

Information is believed to be accurate but not guaranteed.

TOPOGRAPHY MAP



call me today!

CHARLIE HEINSZ, REALTOR®
Charlie@TomSmithLand.com
662.441.2500 office | 662.719.7218 cell



TomSmithLandandHomes.com

Information is believed to be accurate but not guaranteed.

LEASED PROPERTY



call me today!

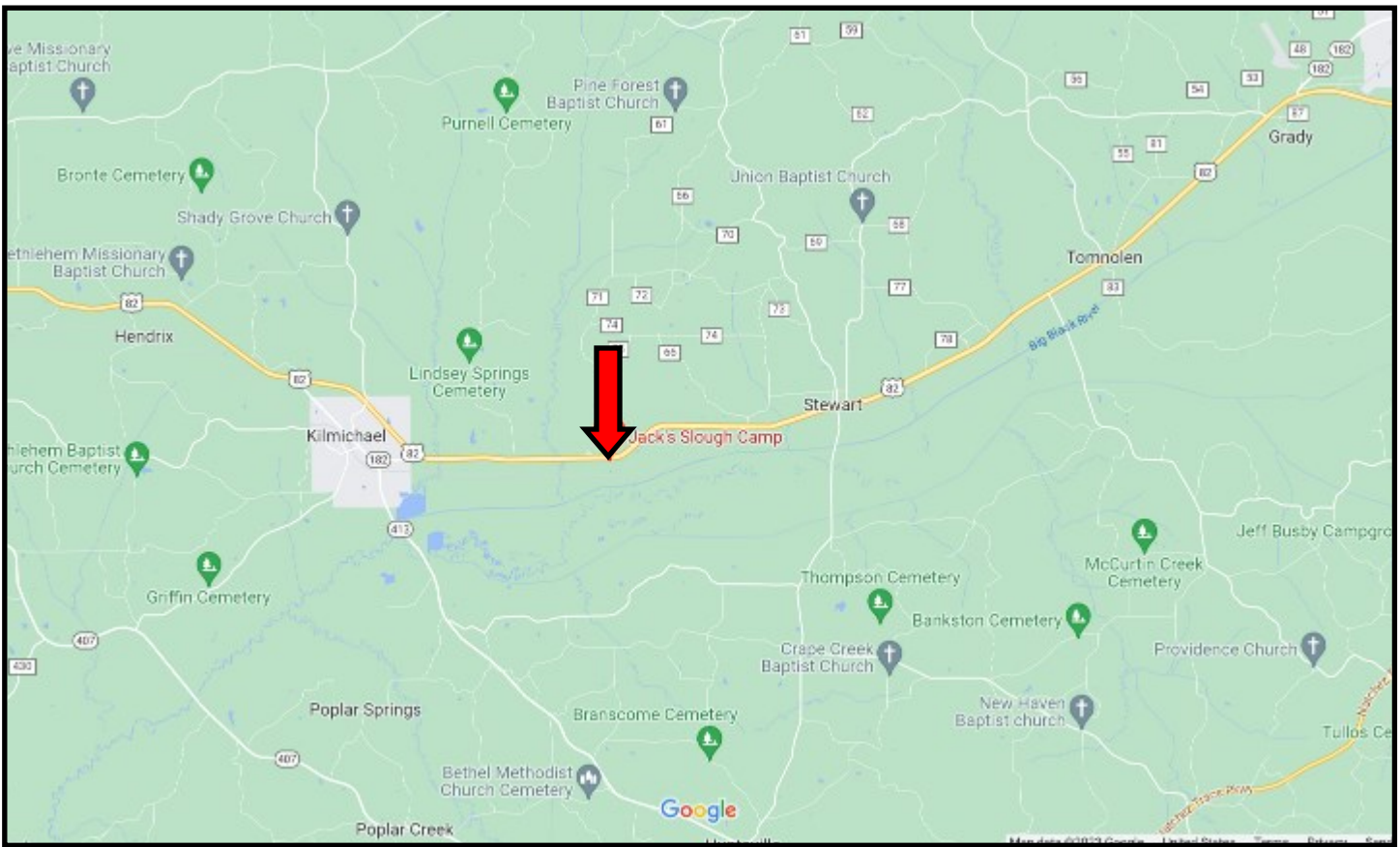
CHARLIE HEINSZ, REALTOR®
Charlie@TomSmithLand.com
662.441.2500 office | 662.719.7218 cell



TomSmithLandandHomes.com

Information is believed to be accurate but not guaranteed.

DIRECTIONAL MAP



From the intersection of Hwy 413 and Hwy 82 in Kilmichael, MS:
Travel Hwy 82 for 3.1 miles. The entrance to the property will be on
the right. [GOOGLE MAP LINK](#)



call me today!

CHARLIE HEINSZ, REALTOR®
Charlie@TomSmithLand.com
662.441.2500 office | 662.719.7218 cell



TomSmithLandandHomes.com

Information is believed to be accurate but not guaranteed.