

Newly Renovated Home

Bolivar County, MS



\$349,000

1106 Farmer Street Cleveland, MS 38732

Look at this newly renovated home in Bolivar County, MS. This home is 2,872 square feet, with three bedrooms, three baths, and a fourth room that could serve as an office or another bedroom. The renovated kitchen features beautiful quartz countertops, brand-new floors throughout the house, and freshly painted rooms. Each guest room has a bathroom, one with a walk-in shower and a walk-in closet. The primary bedroom has refinished original hardwood floors with a renovated master bath, also with quartz countertops, a huge soaking tub, and a walk-in closet. Right off the living room is a screened-in patio and an additional back patio that offers plenty of space to host parties for you and your family. This house sits on a half acre of land and is offered at \$349,000. Call Anthony today for a private showing!

Directions from HWY 61 and HWY 8 in Cleveland, MS: Travel West on Hwy 8 for approximately 1.0 miles. Turn left onto North 5th Avenue and in 0.6 miles turn right onto Farmer Street. After 0.2 miles, the house will be on the right.



Call me today!

ANTHONY STEEN, REALTOR®
Anthony@TomSmithLand.com
662.441.2500 **office** | 662.645.5151 **cell**



TomSmithLandandHomes.com

Information is believed to be accurate but not guaranteed.



Call me today!

ANTHONY STEEN, REALTOR®
Anthony@TomSmithLand.com
662.441.2500 **office** | 662.645.5151 **cell**



TomSmithLandandHomes.com

Information is believed to be accurate but not guaranteed.



Call me today!

ANTHONY STEEN, REALTOR®
Anthony@TomSmithLand.com
662.441.2500 **office** | 662.645.5151 **cell**



TomSmithLandandHomes.com

Information is believed to be accurate but not guaranteed.



Call me today!

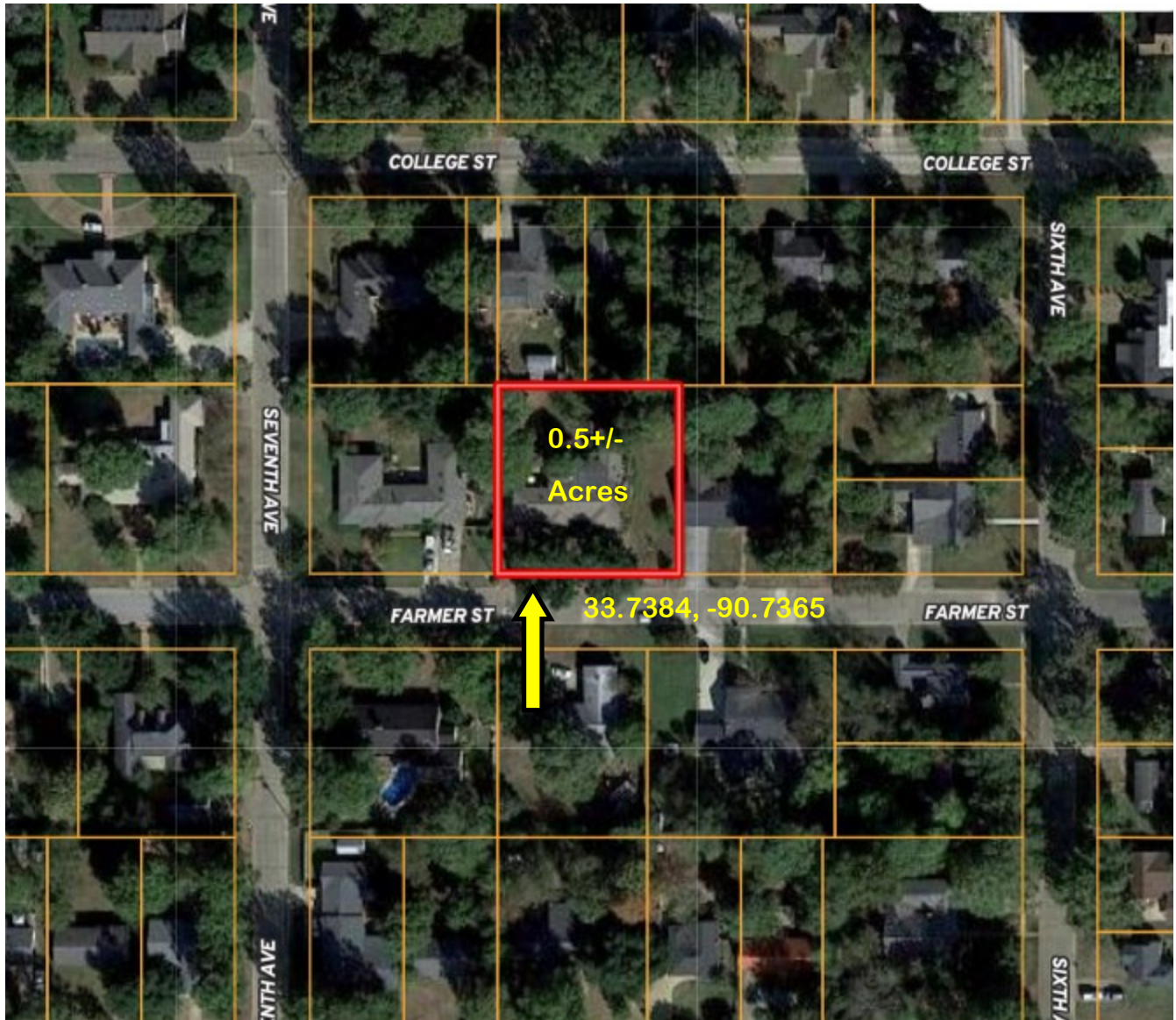
ANTHONY STEEN, REALTOR®
Anthony@TomSmithLand.com
662.441.2500 **office** | 662.645.5151 **cell**



TomSmithLandandHomes.com

Information is believed to be accurate but not guaranteed.

AERIAL MAP



[Click for Interactive Map](#)

Call me today!

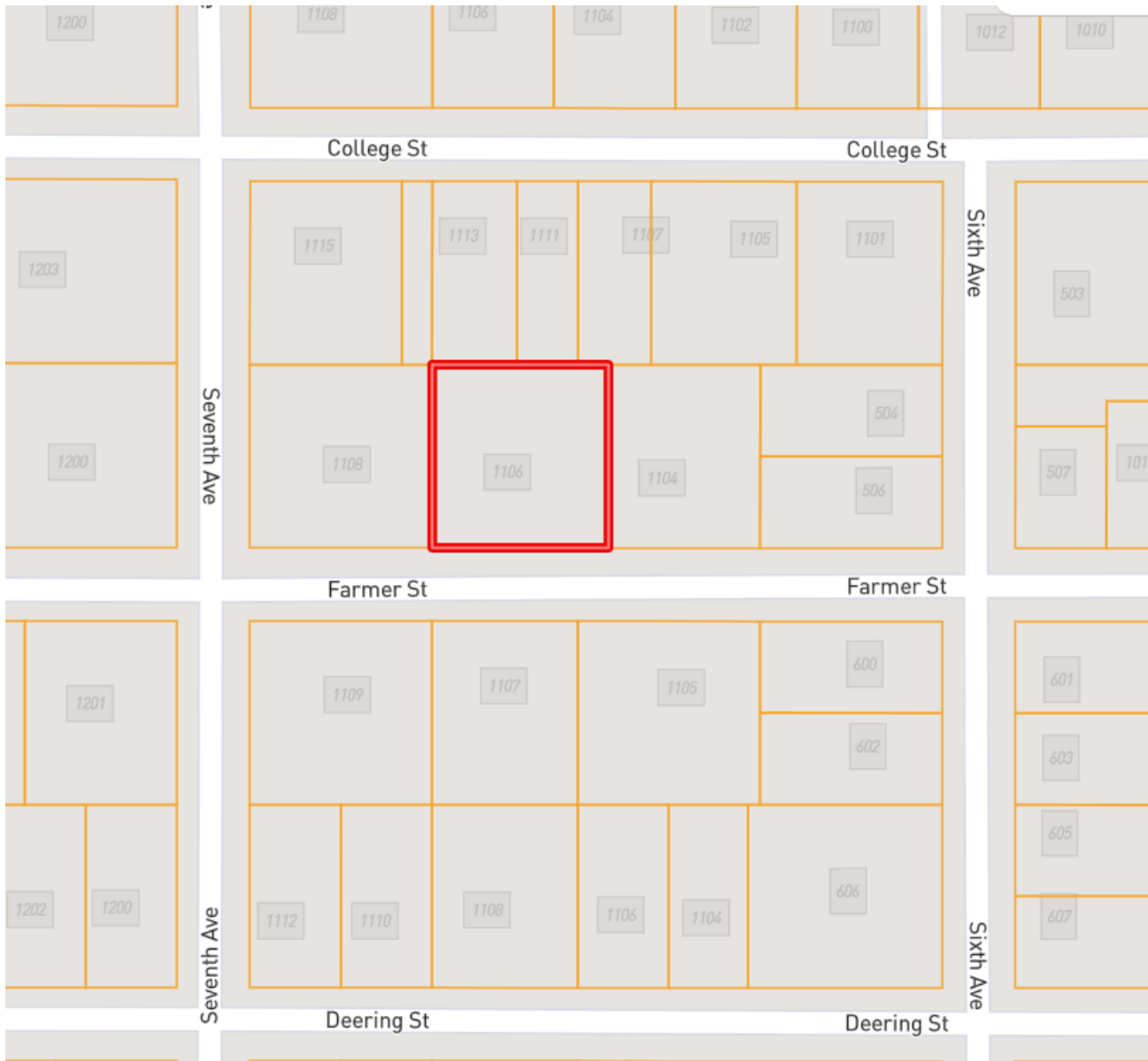
ANTHONY STEEN, REALTOR®
Anthony@TomSmithLand.com
662.441.2500 **office** | 662.645.5151 **cell**



TomSmithLandandHomes.com

Information is believed to be accurate but not guaranteed.

OWNERSHIP MAP



Call me today!

ANTHONY STEEN, REALTOR®
Anthony@TomSmithLand.com
662.441.2500 **office** | 662.645.5151 **cell**

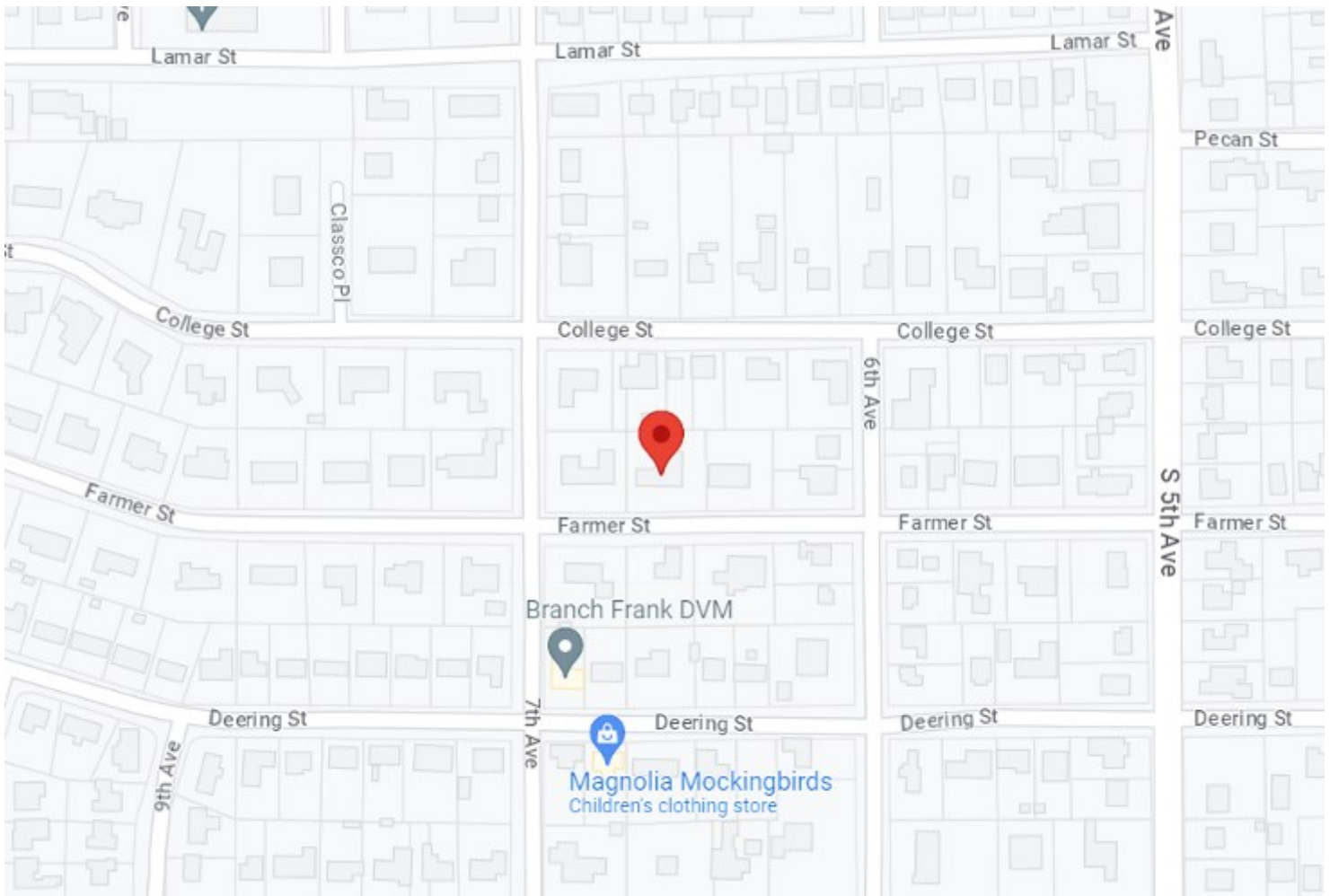


Expect More. Get More.

TomSmithLandandHomes.com

Information is believed to be accurate but not guaranteed.

DIRECTIONAL MAP



Address: 1106 Farmer Street Cleveland, MS 38732

Directions from HWY 61 and HWY 8 in Cleveland, MS: Travel West on Hwy 8 for approximately 1.0 miles. Turn left onto North 5th Avenue and in 0.6 miles turn right onto Farmer Street. After 0.2, miles the house will be on the right. [Click for Google Maps](#)



Call me today!

ANTHONY STEEN, REALTOR®
Anthony@TomSmithLand.com
662.441.2500 **office** | 662.645.5151 **cell**



TomSmithLandandHomes.com

Information is believed to be accurate but not guaranteed.