



39.8± ACRE TRACT IN ATTALA COUNTY, MS



**\$89,560**

This 39.8+/- acre property is a well-managed young timber tract in Attala County, MS. Even though this is a young tract, it has been managed for timber, which is evident in the trees' healthy stand. This tract should afford easy in future harvesting due to the gravel county road that runs the center of the property. The south side of this tract features an area that could make a desirable house site. Wildlife should be abundant due to this area's adjoining property and the expanse of timberland, and deer and turkey should be readily available. The property is easily accessed from the county gravel road. This property is within an hour's drive of the Jackson Metro area. Whether you hunt, hike, or want a place to relax in the country, this small, versatile tract offers plenty of options. Call Sam Sample for a private showing.

**DIRECTIONS FROM THE INTERSECTION OF HWY 35 AND HWY 19 IN KOSCIUSKO, MS:** Travel Hwy 19 6.8 miles. Turn left onto Dodd Road. After 1.6 miles, the property will be on both sides of the road. [GOOGLE MAP LINK](#)



**SAM  
SAMPLE**  
REALTOR®

Office: 601.898.2772  
Cell: 601.668.5697  
Sam@TomSmithLand.com



**A Real Estate Expert You Can Trust**

TomSmithLandandHomes.com





**SAM SAMPLE**  
REALTOR®  
Office: 601.898.2772  
Cell: 601.668.5697  
Sam@TomSmithLand.com



**A Real Estate Expert You Can Trust**  
TomSmithLandandHomes.com

Information is believed to be accurate but not guaranteed.







## AERIAL MAP



[CLICK HERE FOR AN INTERACTIVE MAP](#)

**SAM SAMPLE**  
REALTOR®  
Office: 601.898.2772  
Cell: 601.668.5697  
Sam@TomSmithLand.com



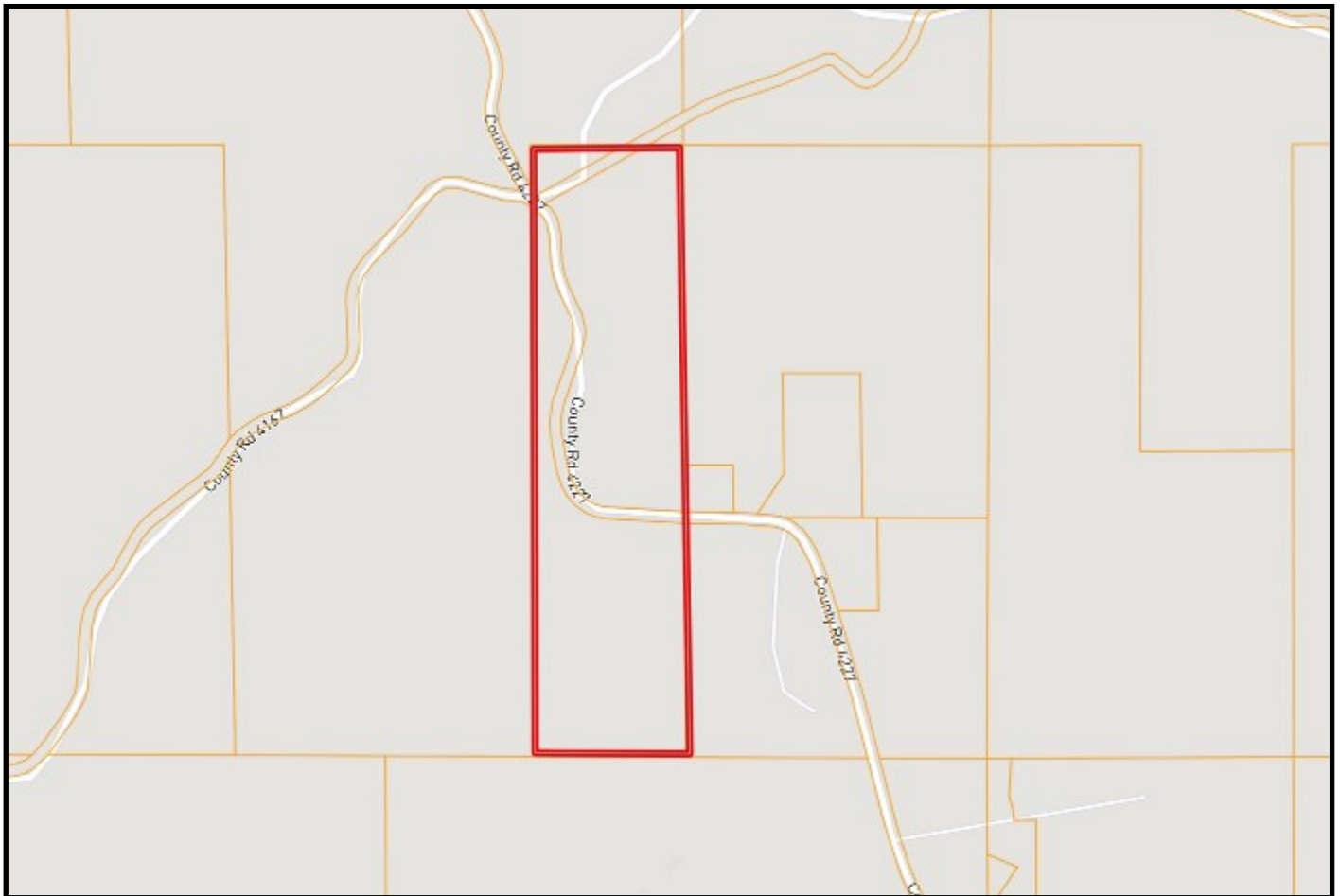
**A Real Estate Expert You Can Trust**  
TomSmithLandandHomes.com

Information is believed to be accurate but not guaranteed.

2011-2023  
BEST  
BROKERAGES



## OWNERSHIP MAP



**SAM SAMPLE**  
REALTOR®  
Office: 601.898.2772  
Cell: 601.668.5697  
Sam@TomSmithLand.com



A Real Estate Expert You Can Trust  
TomSmithLandandHomes.com

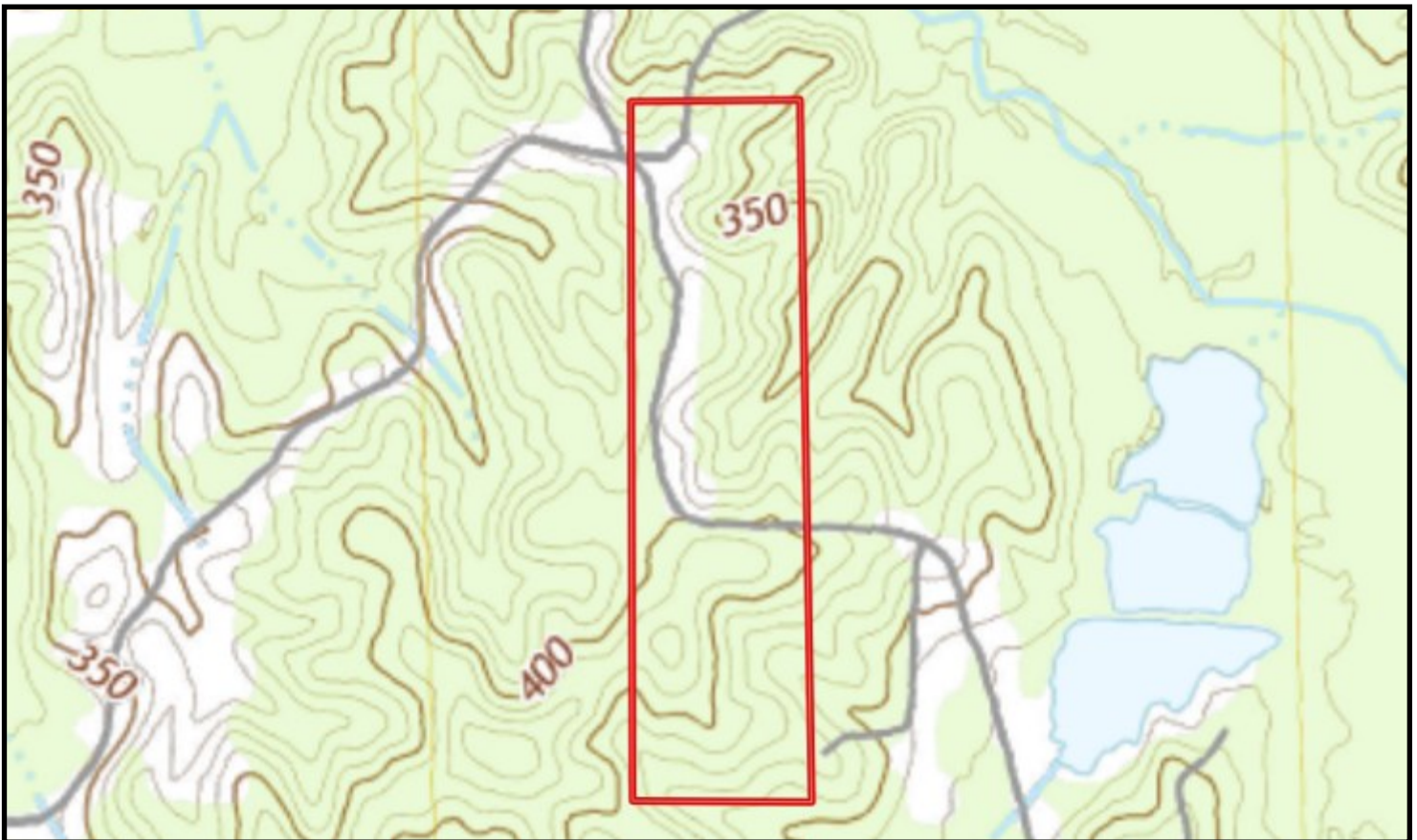
Information is believed to be accurate but not guaranteed.







## TOPO MAP



**SAM SAMPLE**  
REALTOR®  
Office: 601.898.2772  
Cell: 601.668.5697  
Sam@TomSmithLand.com



**A Real Estate Expert You Can Trust**  
TomSmithLandandHomes.com

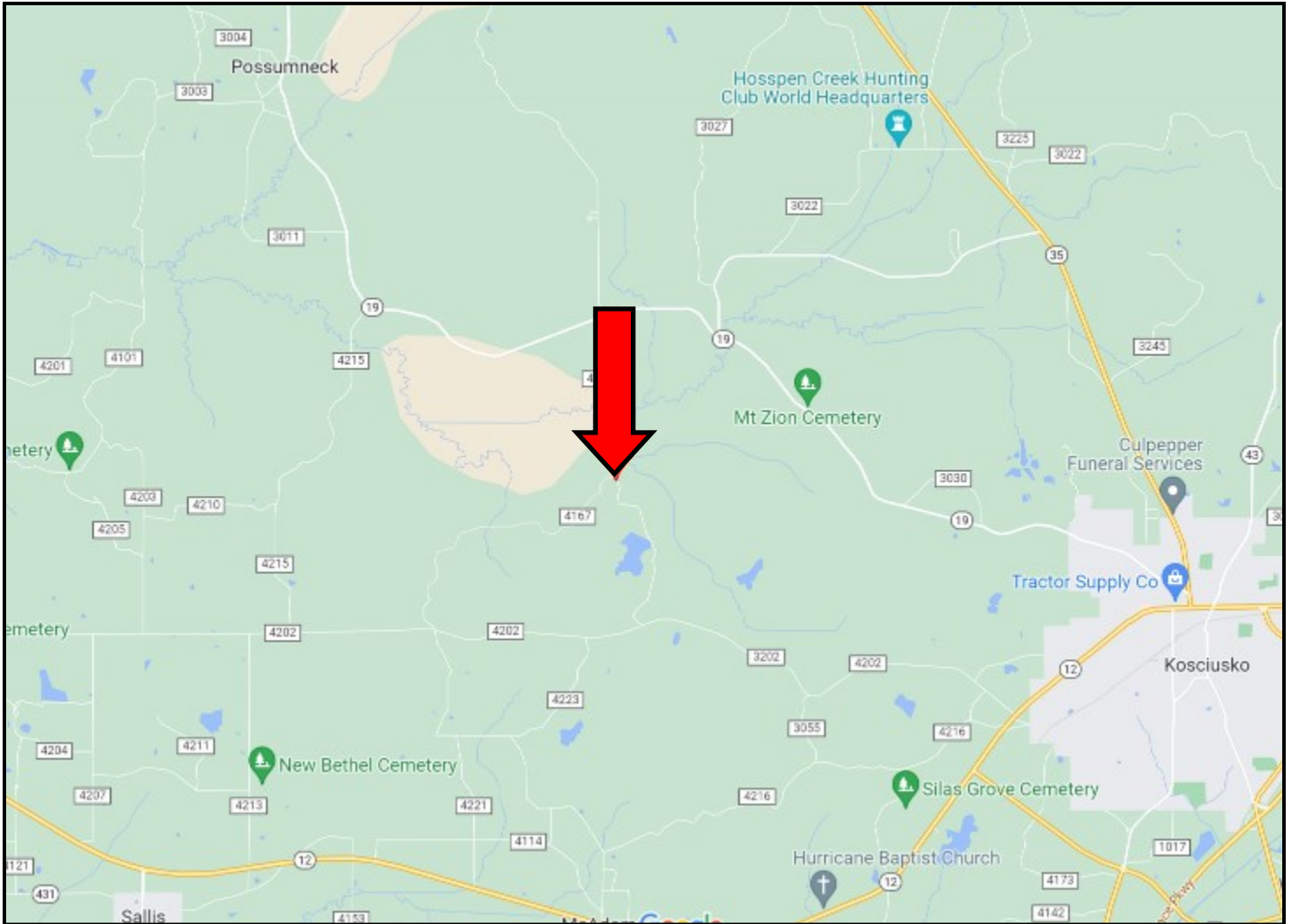
Information is believed to be accurate but not guaranteed.





**DIRECTIONS FROM THE INTERSECTION OF HWY 35 AND HWY 19 IN KOSCIUSKO, MS:** Travel Hwy 19 6.8 miles. Turn left onto Dodd Road. After 1.6 miles, the property will be on both sides of the road. [GOOGLE MAP LINK](#)

## DIRECTIONAL MAP



**SAM  
SAMPLE**  
REALTOR®

Office: 601.898.2772  
Cell: 601.668.5697  
Sam@TomSmithLand.com



**A Real Estate Expert You Can Trust**

TomSmithLandandHomes.com