

**\$212,500**

**79.6± ACRE TRACT IN HOLMES COUNTY, MS**



This well-managed tract in Holmes County, MS, comprises 79.6± acres. Even though this tract is managed for timber, it affords a diverse environment that promotes and supports abundant wildlife. Deer and turkey should be readily available, as well as smaller game. The road system makes the property accessible for evaluating timber or scouting for game. This property is within an hour's drive of the Jackson Metro area and close to the Big Black River corridor, known for producing quality deer. Whether you hunt, hike, or want a place to relax, this property could provide plenty of recreational activities. Call Sam Sample for a private showing.

**DIRECTIONS FROM HWY 12 AND HWY 51 IN DURANT, MS:** Travel Highway 51 south for 2.7 miles, Turn right onto Damascus Rd. and travel 1.3 miles. Turn right on Stephens Rd. Travel .3 miles and the property will be on the right.

[GOOGLE MAP LINK](#)



**SAM  
SAMPLE**  
REALTOR®

Office: 601.898.2772  
Cell: 601.668.5697  
Sam@TomSmithLand.com



**A Real Estate Expert You Can Trust**

TomSmithLandandHomes.com



## SAM SAMPLE

REALTOR®

Office: 601.898.2772

Cell: 601.668.5697

Sam@TomSmithLand.com



A Real Estate Expert You Can Trust

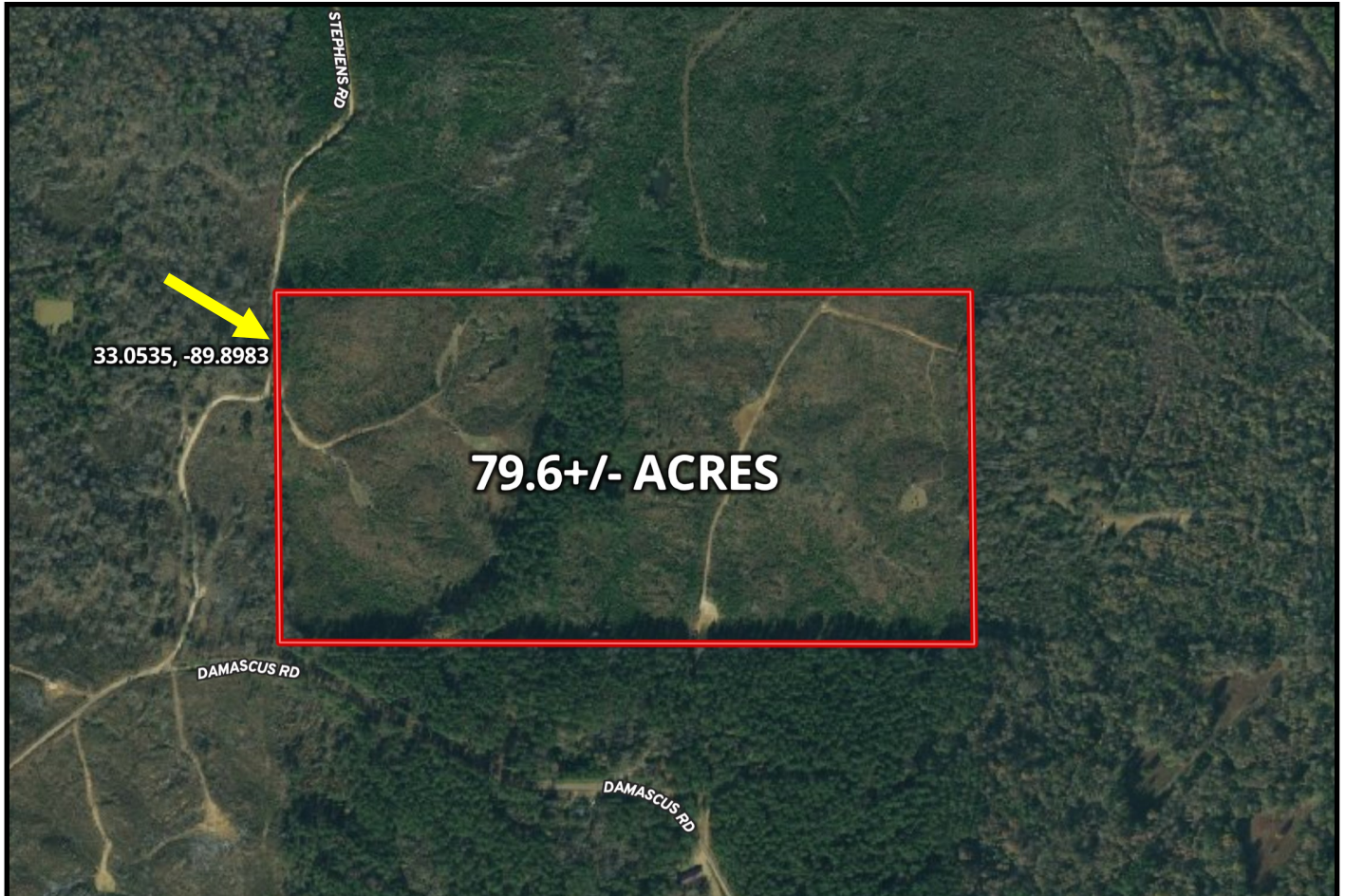
TomSmithLandandHomes.com

Information is believed to be accurate but not guaranteed.

LowReport  
2011-2023  
BEST  
BROKERAGES



# AERIAL MAP



[CLICK HERE FOR AN INTERACTIVE MAP](#)

**SAM SAMPLE**

REALTOR®

Office: 601.898.2772

Cell: 601.668.5697

Sam@TomSmithLand.com



**A Real Estate Expert You Can Trust**

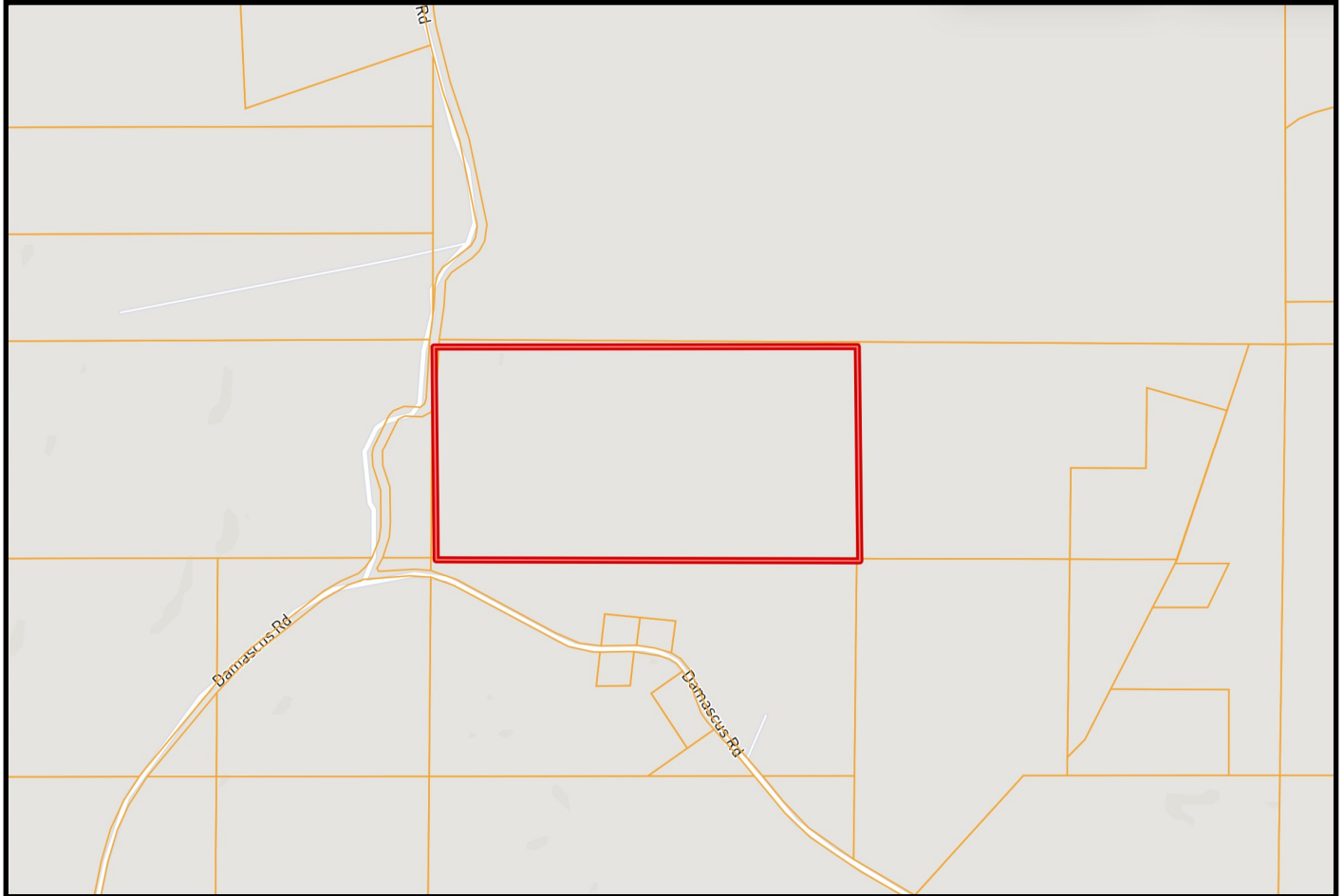
TomSmithLandandHomes.com

Information is believed to be accurate but not guaranteed.

2011-2023  
BEST  
BROKERAGES



# OWNERSHIP MAP



**SAM SAMPLE**  
REALTOR®  
Office: 601.898.2772  
Cell: 601.668.5697  
Sam@TomSmithLand.com



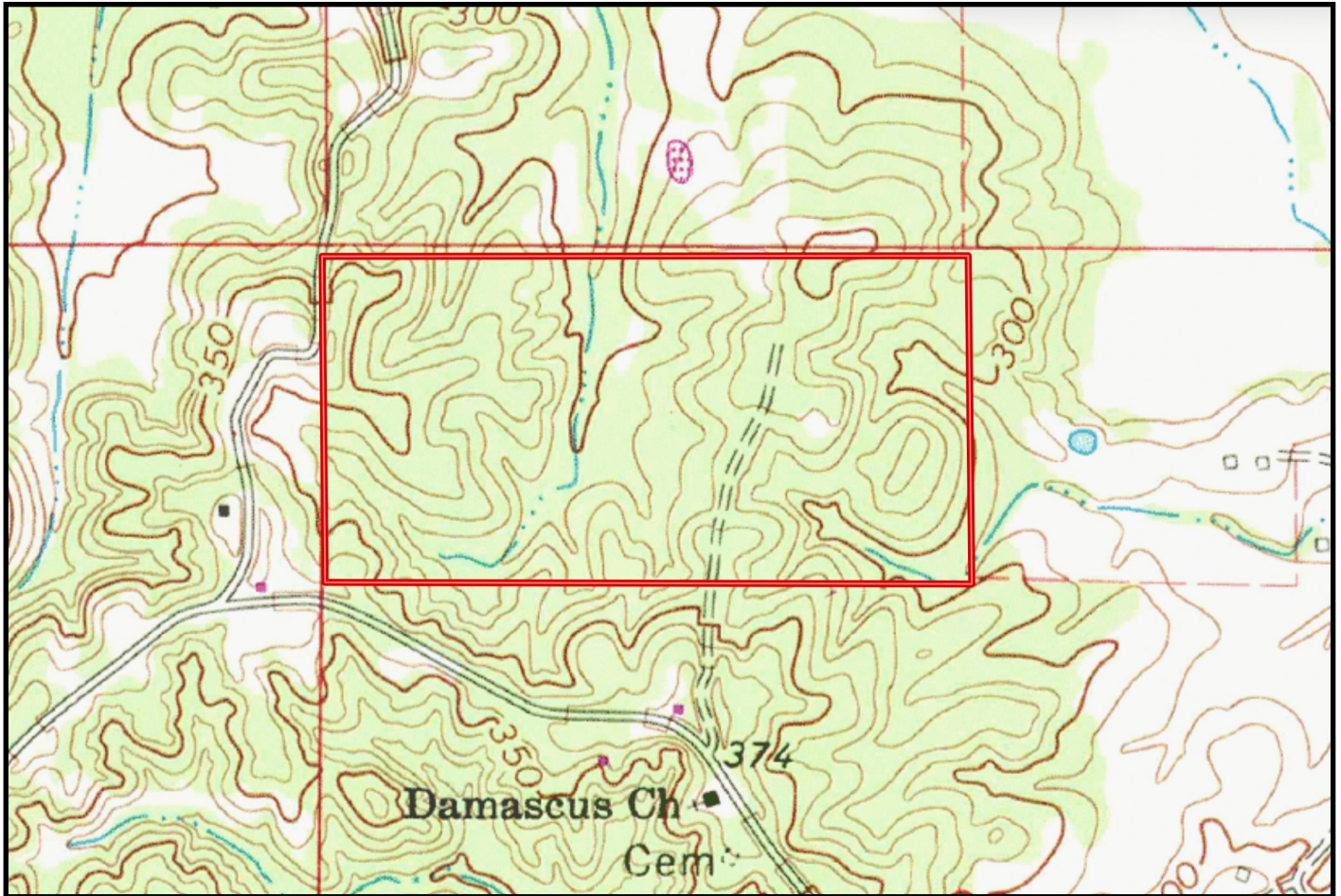
**A Real Estate Expert You Can Trust**  
TomSmithLandandHomes.com

Information is believed to be accurate but not guaranteed.





# TOPO MAP



**SAM SAMPLE**

REALTOR®

Office: 601.898.2772

Cell: 601.668.5697

Sam@TomSmithLand.com



**A Real Estate Expert You Can Trust**

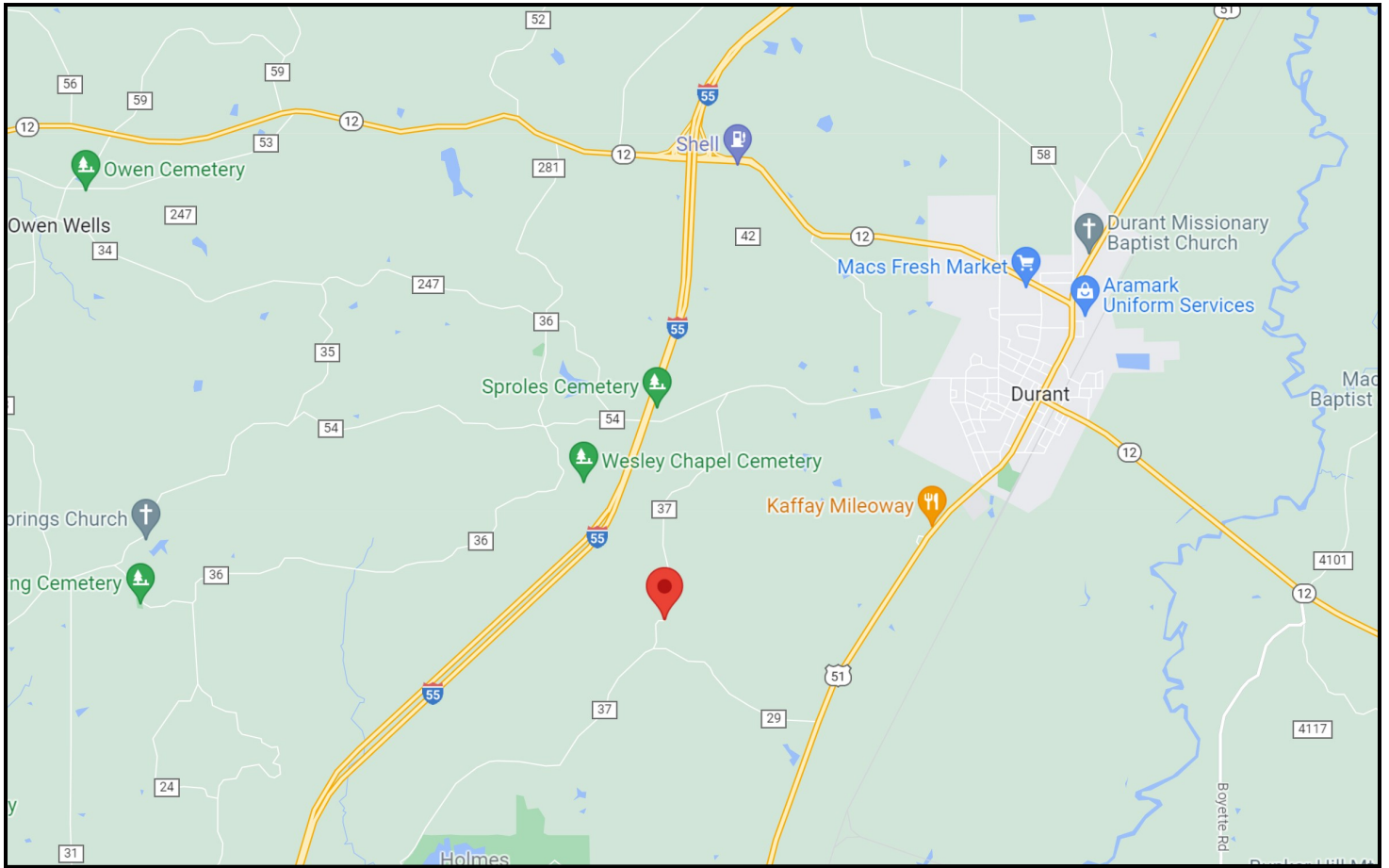
TomSmithLandandHomes.com

Information is believed to be accurate but not guaranteed.

2011-2023  
BEST  
BROKERAGES



# DIRECTIONAL MAP



**DIRECTIONS FROM HWY 12 AND HWY 51 IN DURANT, MS:** Travel Highway 51 south for 2.7 miles, Turn right onto Damascus Rd. and travel 1.3 miles. Turn right on Stephens Rd. Travel .3 miles and the property will be on the right. [GOOGLE MAP LINK](#)



**SAM  
SAMPLE**  
REALTOR®

Office: 601.898.2772  
Cell: 601.668.5697  
Sam@TomSmithLand.com



**A Real Estate Expert You Can Trust**

TomSmithLandandHomes.com