

DIVERSE RECREATIONAL TRACT

95.6± Acres in Newton County, MS



\$185,000

Welcome to this exceptional 95.6± acre property in Newton County, MS, just minutes from the City of Newton. This stunning parcel boasts a diverse mix of hardwood and pine trees, creating a serene and picturesque natural setting. With 30± acres that were clear-cut in 2013 and now featuring flourishing 10-year-old regrowth, this property offers a unique blend of mature and young forests. Ideal for nature enthusiasts, avid hunters, or those seeking a tranquil retreat, this property provides endless opportunities for outdoor recreation. The expansive acreage is perfect for creating hunting trails, establishing food plots, or setting up tree stands. With abundant wildlife, including deer, turkey, and other small game, this property is a hunter's paradise. In addition to its recreational appeal, this property presents the possibility of being an excellent home site. Its size allows for privacy and seclusion, making it the perfect canvas to build your dream home or cabin surrounded by the natural beauty of Newton County. Conveniently located just minutes from Newton, you'll have easy access to everyday amenities, including shopping and dining options. Whether you're looking to escape the hustle and bustle of city life or create a year-round residence, this property offers the best of both worlds--tranquility and accessibility. Don't miss out on this opportunity to own land in Newton County. Whether you envision a hunting retreat, a recreational haven, or your dream home nestled in nature, this property has it all. Contact Chad today to schedule a viewing!



**CHAD
WILSON**
REALTOR®

Office: 601.898.2772

Cell: 601.750.1970

Chad@TomSmithLand.com



A Real Estate Expert You Can Trust

TomSmithLandandHomes.com

Information is believed to be accurate but not guaranteed.





CHAD WILSON

REALTOR®

Office: 601.898.2772

Cell: 601.750.1970

Chad@TomSmithLand.com



A Real Estate Expert You Can Trust

TomSmithLandandHomes.com

Information is believed to be accurate but not guaranteed.





CHAD WILSON

REALTOR®

Office: 601.898.2772

Cell: 601.750.1970

Chad@TomSmithLand.com



A Real Estate Expert You Can Trust

TomSmithLandandHomes.com

Information is believed to be accurate but not guaranteed.



AERIAL MAP



[Click Here for an Interactive Map](#)

CHAD WILSON

REALTOR®

Office: 601.898.2772

Cell: 601.750.1970

Chad@TomSmithLand.com



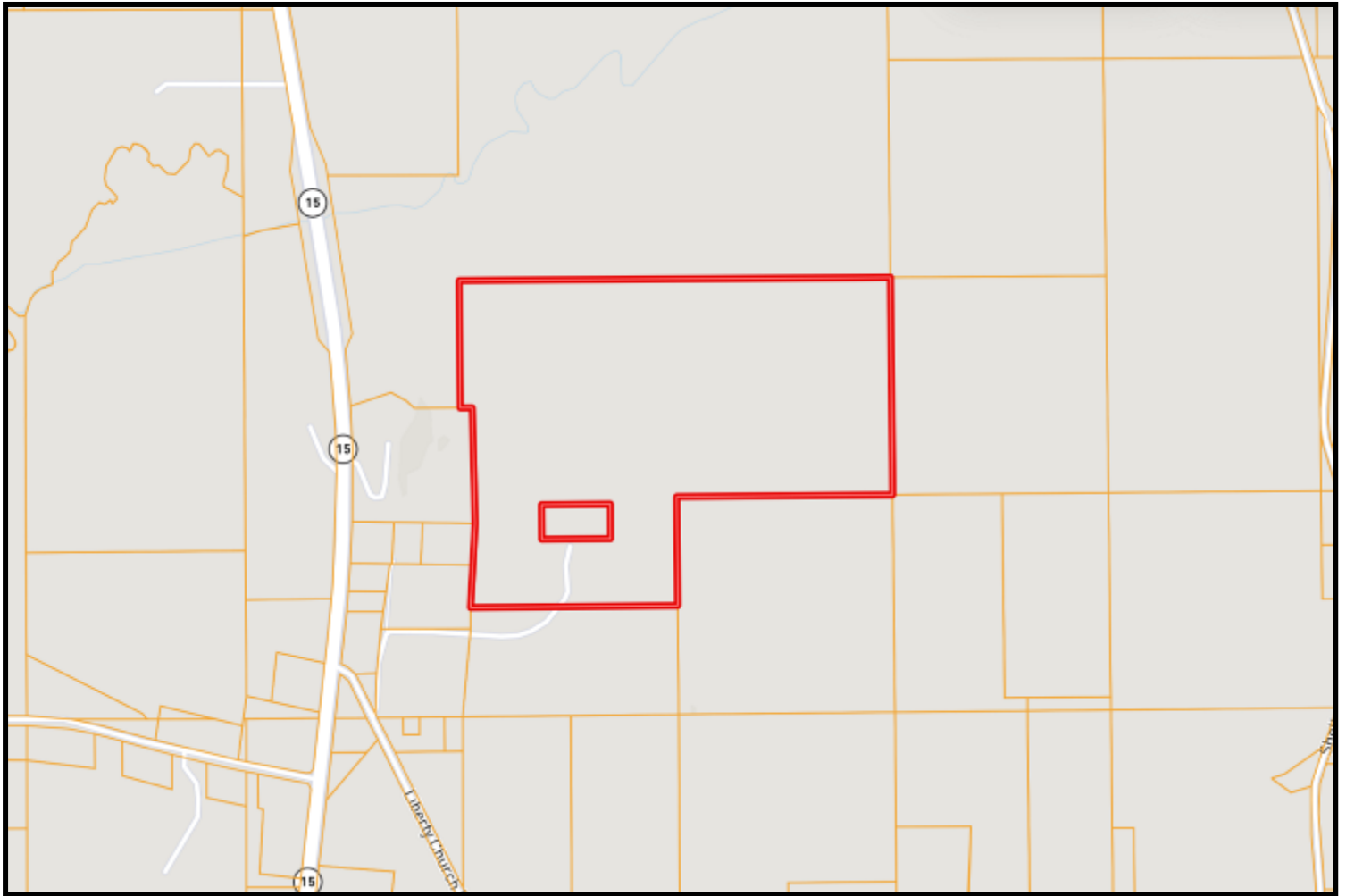
A Real Estate Expert You Can Trust

TomSmithLandandHomes.com

Information is believed to be accurate but not guaranteed.



OWNERSHIP MAP



CHAD WILSON

REALTOR®

Office: 601.898.2772

Cell: 601.750.1970

Chad@TomSmithLand.com



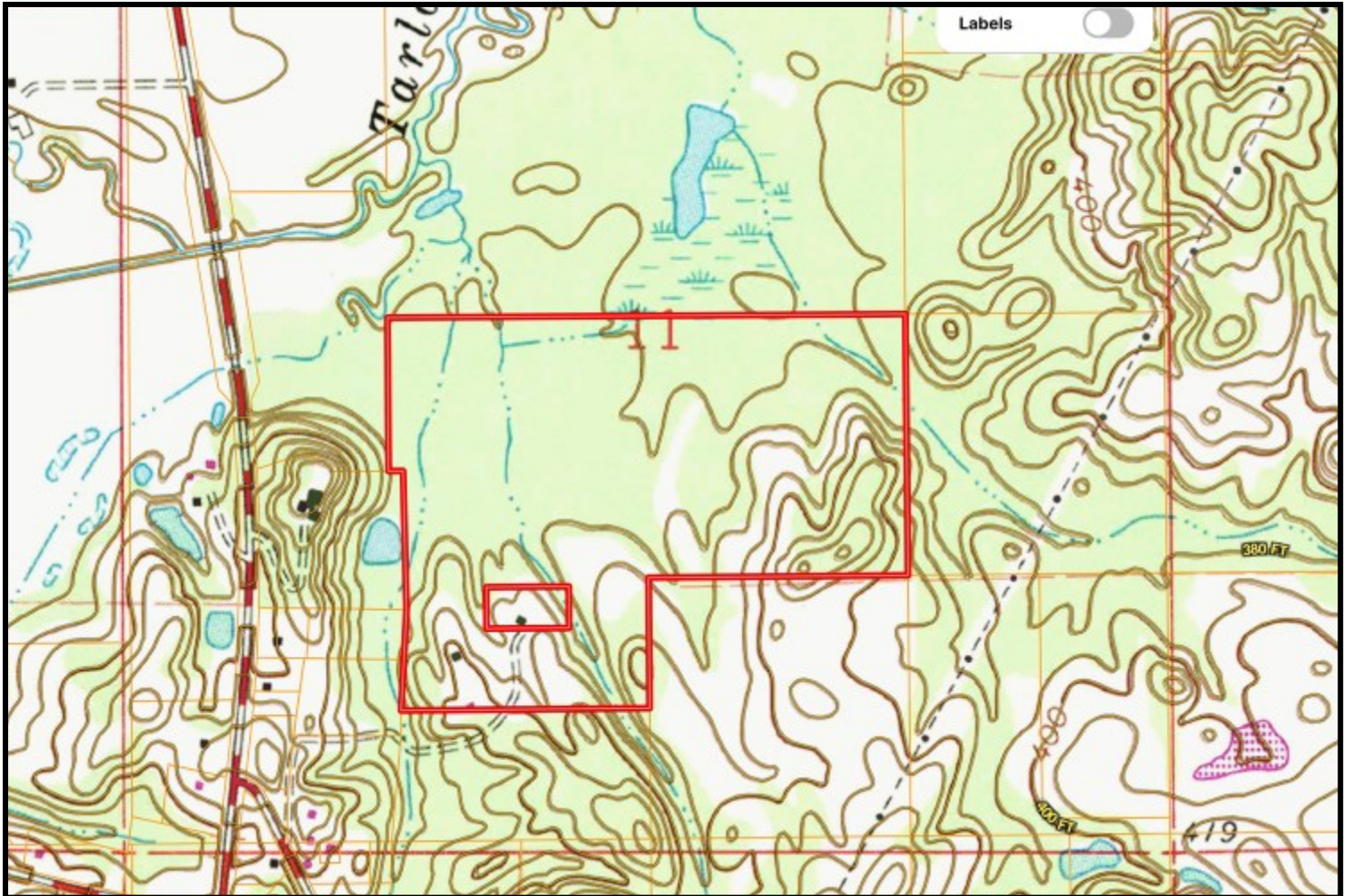
A Real Estate Expert You Can Trust

TomSmithLandandHomes.com

Information is believed to be accurate but not guaranteed.



TOPO MAP



CHAD WILSON

REALTOR®

Office: 601.898.2772

Cell: 601.750.1970

Chad@TomSmithLand.com



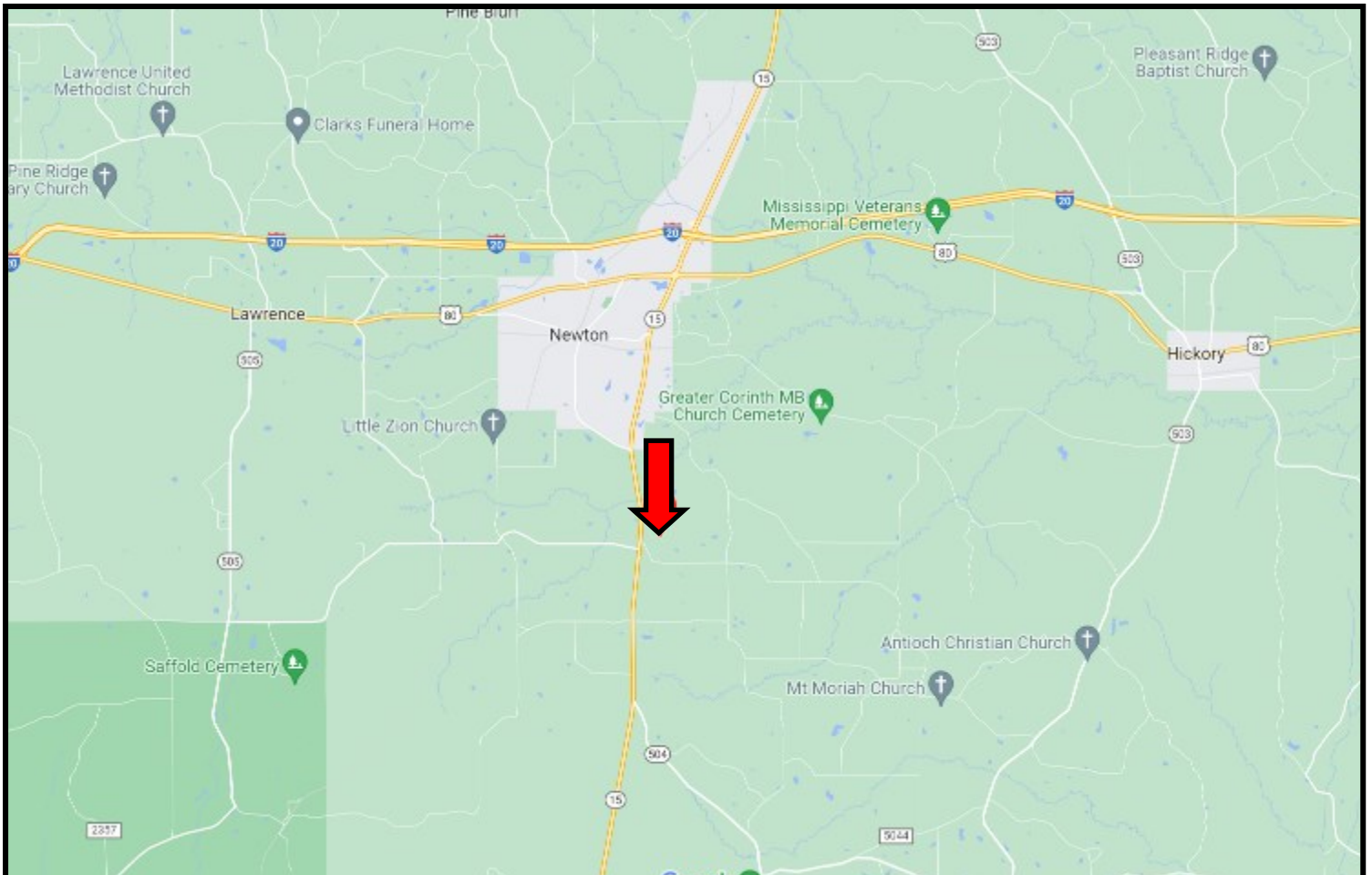
A Real Estate Expert You Can Trust

TomSmithLandandHomes.com

Information is believed to be accurate but not guaranteed.



DIRECTIONAL MAP



DIRECTIONS FROM I-20 AND HWY 15 IN NEWTON, MS: Travel Hwy 15 S for 3.6 miles. Turn left onto Liberty Church Rd. and immediately turn left onto Clyde Evans Rd. The property will be on your left. [GOOGLE MAP LINK](#)



**CHAD
WILSON**
REALTOR®

Office: 601.898.2772
Cell: 601.750.1970
Chad@TomSmithLand.com



A Real Estate Expert You Can Trust

TomSmithLandandHomes.com

Information is believed to be accurate but not guaranteed.

