



Charming Fixer-Upper WARREN COUNTY, MS



2405 Washington Street, Vicksburg, MS 39180

Welcome to your new Charming Fixer-Upper in Warren County, MS. Discover the allure of a captivating piece of history awaiting your personal touch. This solid brick, circa 1890, 2-story home spans over 1800 sq. ft. on a 1/4 acre lot, conveniently located near other historic homes, bed and breakfasts, and shopping. With 2-3 bedrooms, 1.5 baths, a living room, dining room, and kitchen, this property offers endless potential. Embrace the opportunity to restore and revitalize this historic gem, as it requires some TLC. Enjoy the charm of the double gallery back porches, covered front porch, iron fencing, and a garage that adds convenience. Make your mark on this fixer-upper, where history meets potential. Don't miss this remarkable opportunity to create your dream home in one of Vicksburg's cherished neighborhoods. Call Clay to schedule your private showing today!

Directions from I-20 W in Vicksburg, MS: Head southwest on I-20 W. Take exit 1A to merge onto Washington St. Go 1.9 miles and house is on the right.



CLAY
SIMMONS
REALTOR®

Office: 601.898.2772

Cell: 601.672.6864

Clay@TomSmithHomes.com



A Real Estate Expert You Can Trust

TomSmithLandandHomes.com

Information is believed to be accurate but not guaranteed.





**CLAY
SIMMONS**

REALTOR®

Office: 601.898.2772

Cell: 601.672.6864

Clay@TomSmithHomes.com



A Real Estate Expert You Can Trust

TomSmithLandandHomes.com

Information is believed to be accurate but not guaranteed.





**CLAY
SIMMONS**
REALTOR®

Office: 601.898.2772

Cell: 601.672.6864

Clay@TomSmithHomes.com



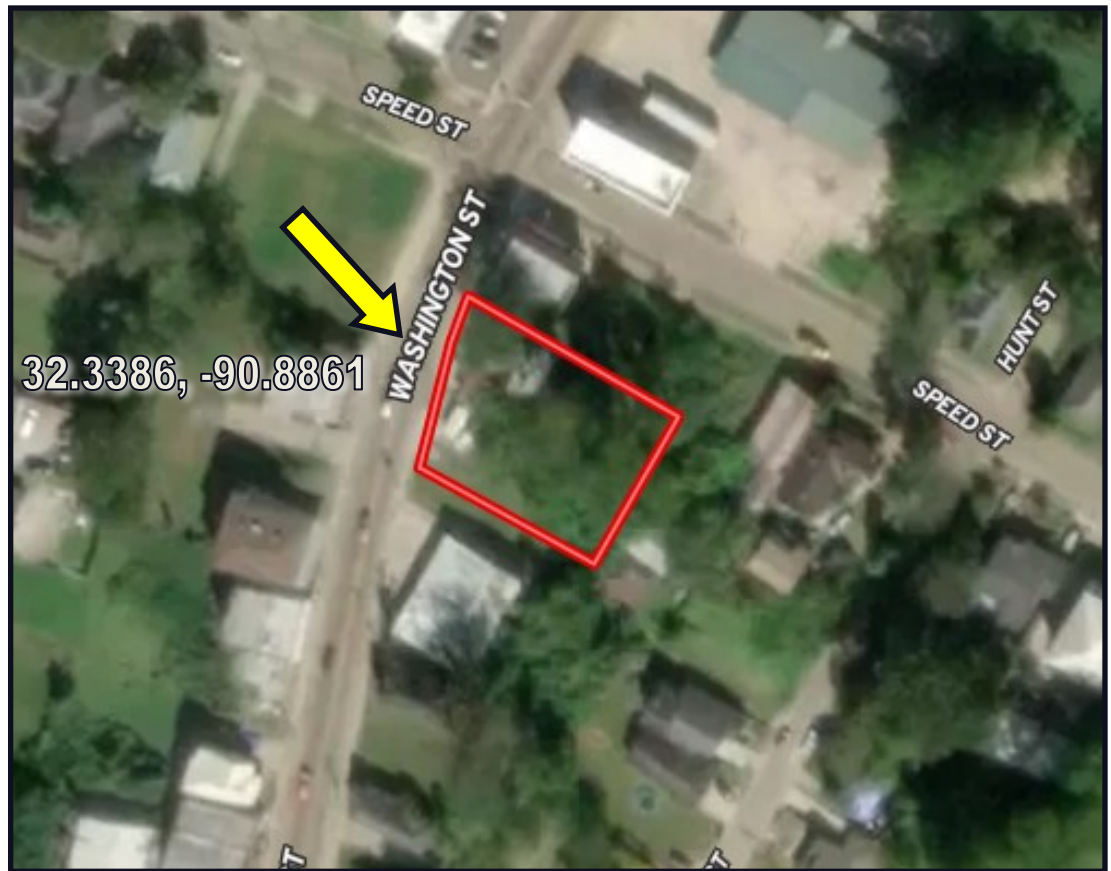
A Real Estate Expert You Can Trust

TomSmithLandandHomes.com

Information is believed to be accurate but not guaranteed.



Aerial Map



Ownership Map

INTERACTIVE MAP

[CLICK HERE](#)



CLAY
SIMMONS
REALTOR®

Office: 601.898.2772

Cell: 601.672.6864

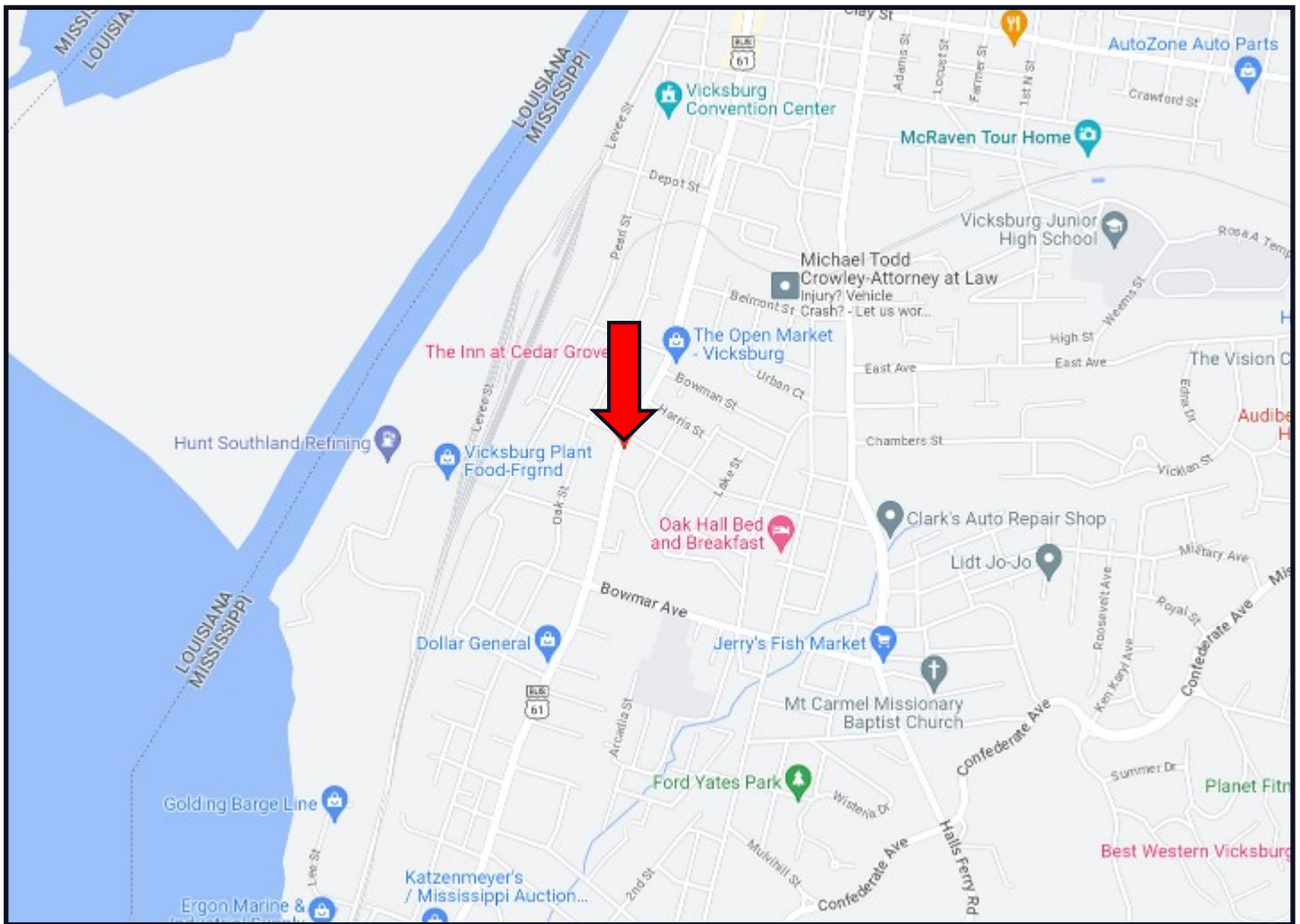
Clay@TomSmithHomes.com



A Real Estate Expert You Can Trust

TomSmithLandandHomes.com

2011-2023
REACT



Directional Map



[2405 Washington Street, Vicksburg, MS 39180—Click For Directions](#)

Directions from I-20 W in Vicksburg, MS: Take exit 1A to merge onto I-20 Frontage Rd/Old US 80 E/Washington Street. Continue straight to stay on I-20 Frontage Rd/Old US 80 E/Washington Street. After 1.9 miles, the home will be on the right.



**CLAY
SIMMONS**
REALTOR®

Office: 601.898.2772

Cell: 601.672.6864

Clay@TomSmithHomes.com



A Real Estate Expert You Can Trust

TomSmithLandandHomes.com

