

37± ACRES OF EXCELLENT POTENTIAL IN NOXUBEE COUNTY, MS

\$79,000

Look at these 37± acres in Shuqualak, Mississippi, in Noxubee County! This property is bursting with potential. There is plenty of room for the perfect homesite or multiple home sites! This secluded property could be used for hunting by starting food plots, planning stand placement, and taking inventory for the upcoming season, OR make this property your dream homestead! Located on a quiet country road, with a peaceful little creek running through the north portion of the property, this tract would make for a heck of a great place to build that dream home and have plenty of room to roam! Large timberland tracts surround this property and would make for a great start to a timber investment. Call Michael Cooper today to take a look and start seeing this property's potential!

Directions from the intersection of MS-15 and MS-14 in Louisville, MS: Travel east on MS-14 for 20.7 miles. Turn right onto MS-490 W and travel 2.0 miles. Turn left onto Butler Rd. and travel 7.8 miles. Turn left onto Shuqualak Rd. After 2.2 miles, the property will be on the right.



**MICHAEL
COOPER**
REALTOR®

Office: 662.268.6333
Cell: 662.285.8686
MCooper@TomSmithLand.com



A Real Estate Expert You Can Trust

TomSmithLandandHomes.com

Information is believed to be accurate but not guaranteed.





MICHAEL COOPER
REALTOR®

Office: 662.268.6333

Cell: 662.285.8686

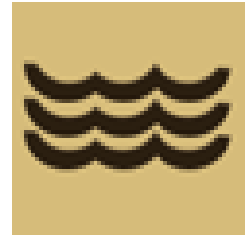
MCooper@TomSmithLand.com



A Real Estate Expert You Can Trust
TomSmithLandandHomes.com

Information is believed to be accurate but not guaranteed.





MICHAEL COOPER
REALTOR®

Office: 662.268.6333

Cell: 662.285.8686

MCooper@TomSmithLand.com

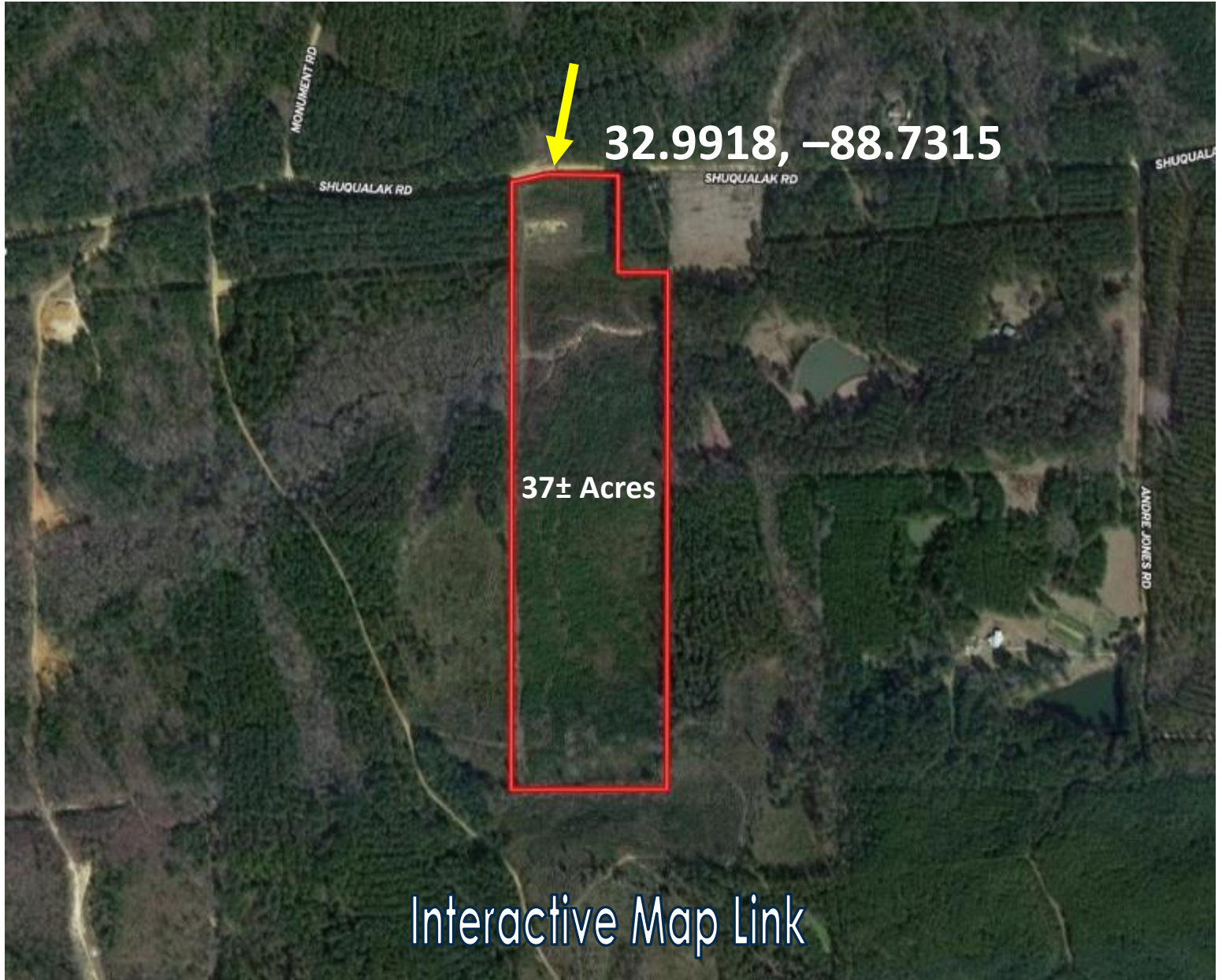


A Real Estate Expert You Can Trust
TomSmithLandandHomes.com

Information is believed to be accurate but not guaranteed.



Aerial Map



MICHAEL COOPER
REALTOR®

Office: 662.268.6333

Cell: 662.285.8686

MCooper@TomSmithLand.com

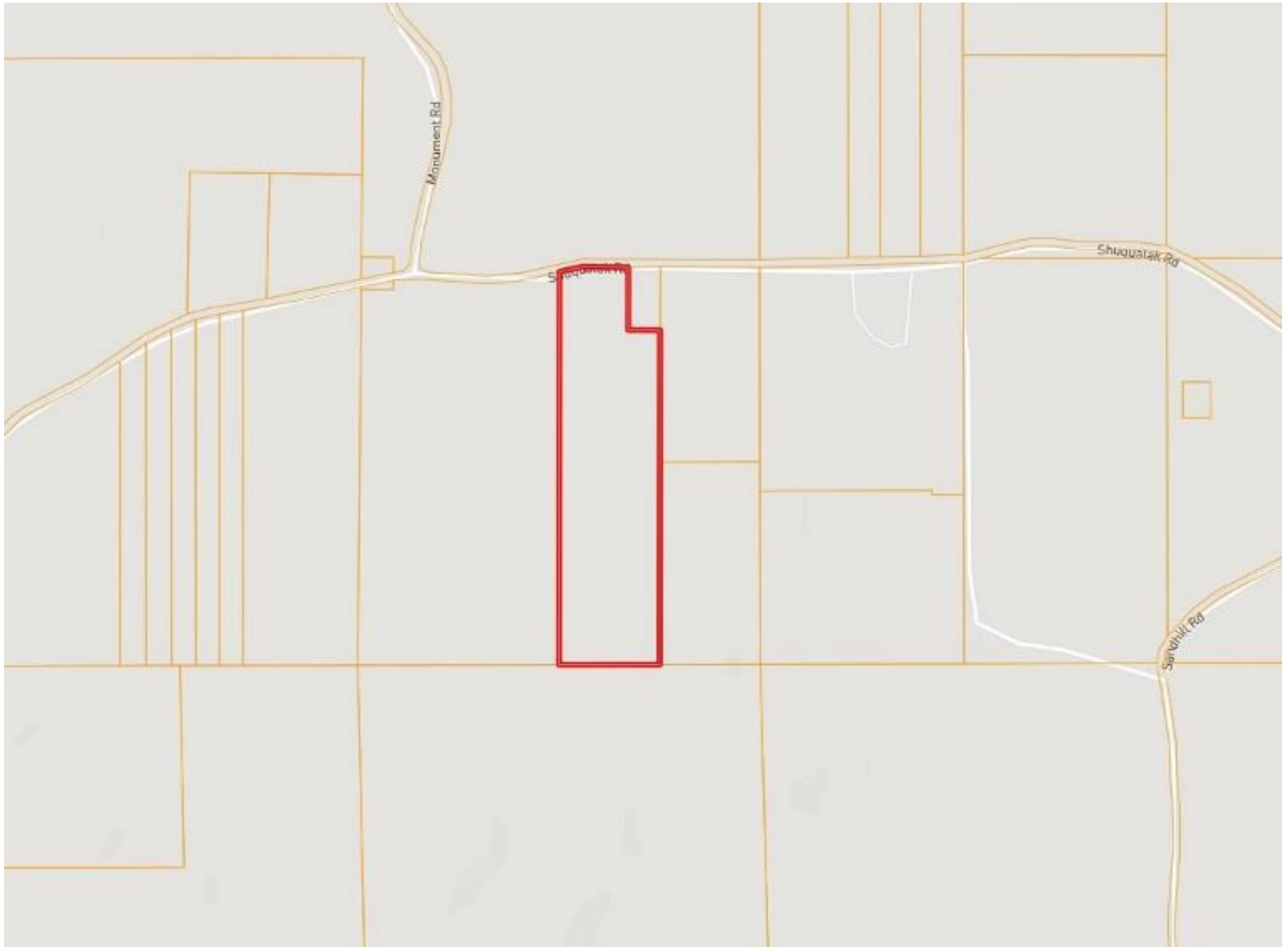


A Real Estate Expert You Can Trust
TomSmithLandandHomes.com

Information is believed to be accurate but not guaranteed.



Ownership Map



MICHAEL COOPER

REALTOR®

Office: 662.268.6333

Cell: 662.285.8686

MCooper@TomSmithLand.com



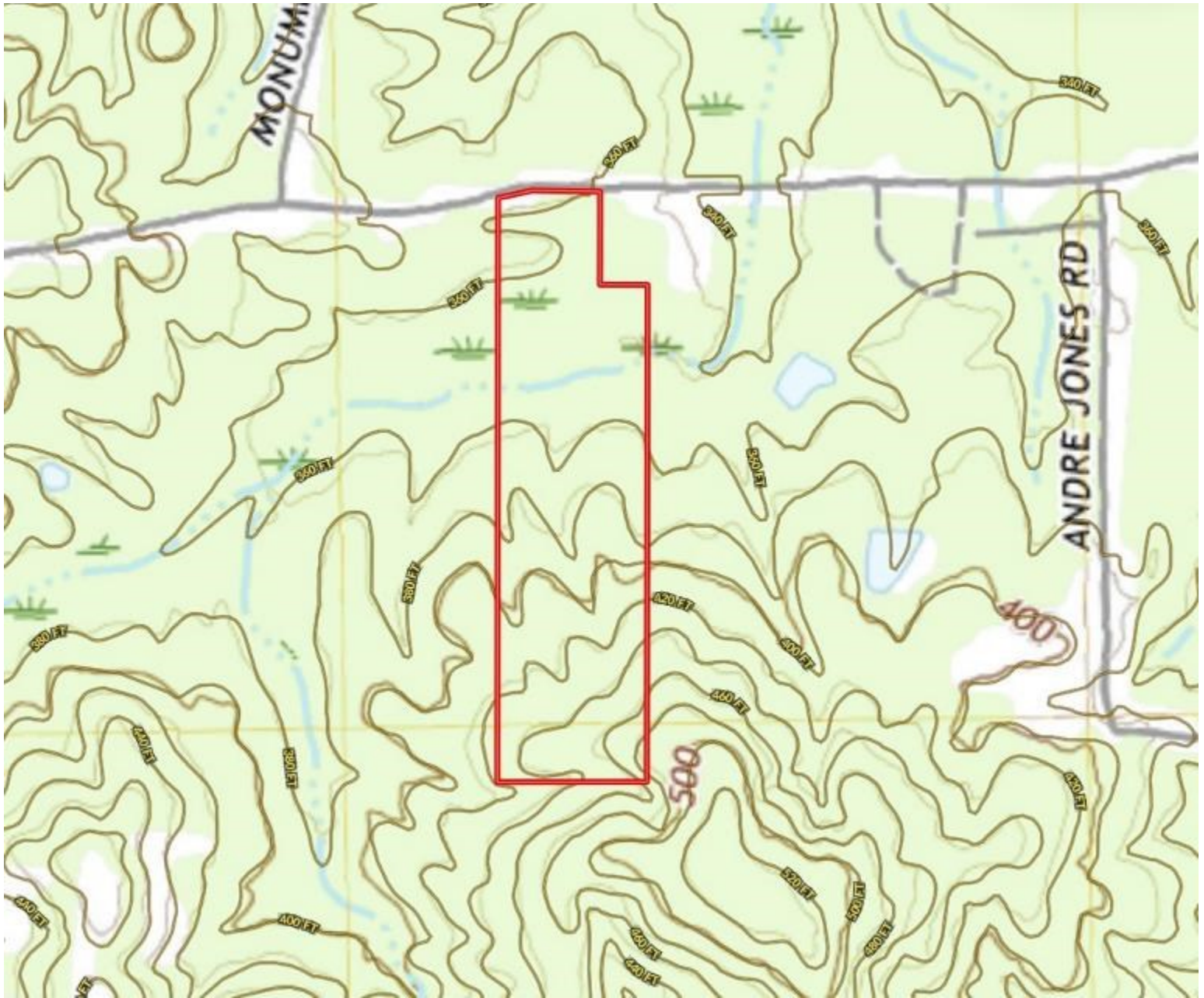
A Real Estate Expert You Can Trust

TomSmithLandandHomes.com

Information is believed to be accurate but not guaranteed.



Topography Map



MICHAEL COOPER
REALTOR®

Office: 662.268.6333

Cell: 662.285.8686

MCooper@TomSmithLand.com

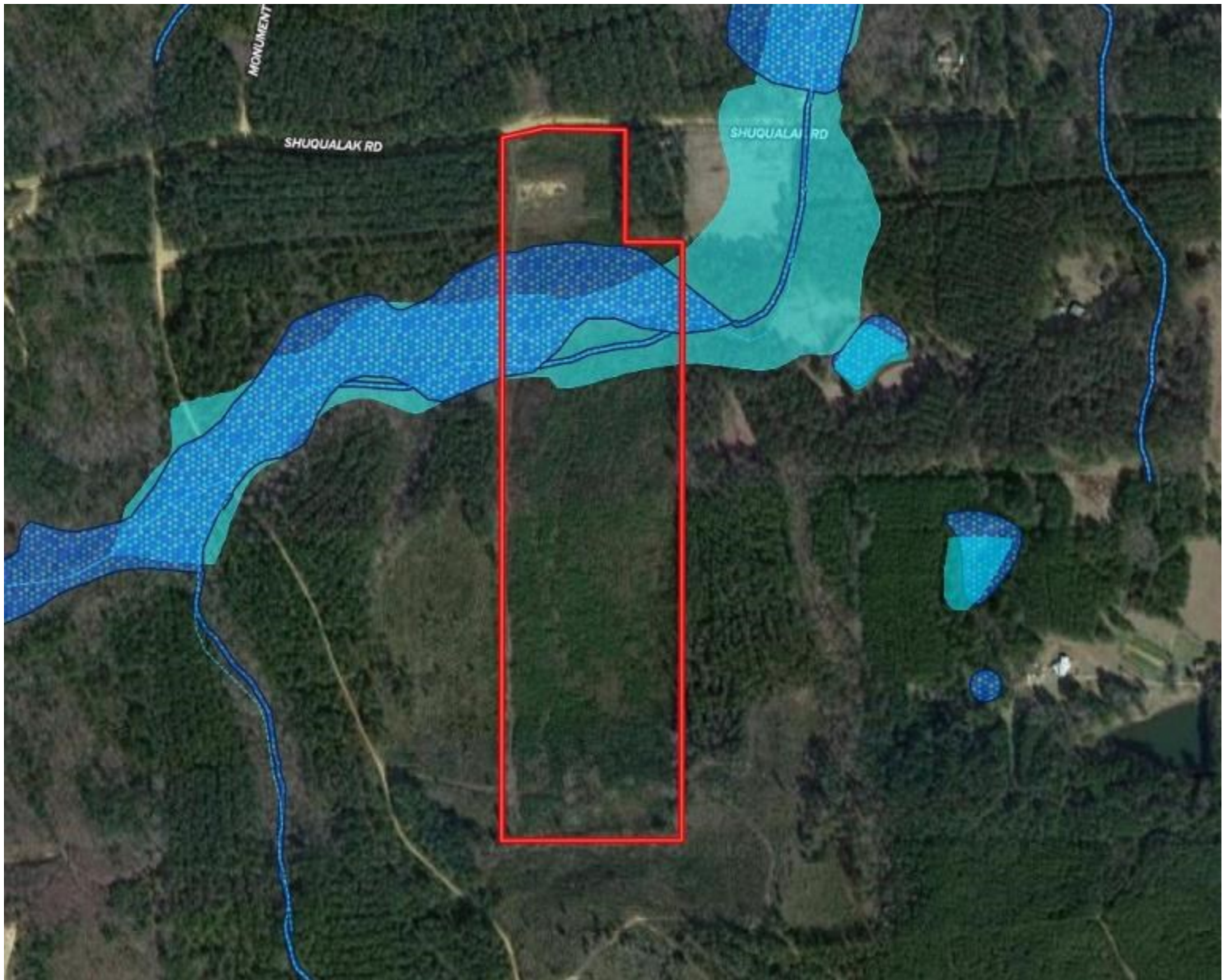


A Real Estate Expert You Can Trust
TomSmithLandandHomes.com

Information is believed to be accurate but not guaranteed.

LiveReport
2011-2023
BEST
BROKERAGES

Flood Map



MICHAEL COOPER
REALTOR®

Office: 662.268.6333

Cell: 662.285.8686

MCooper@TomSmithLand.com

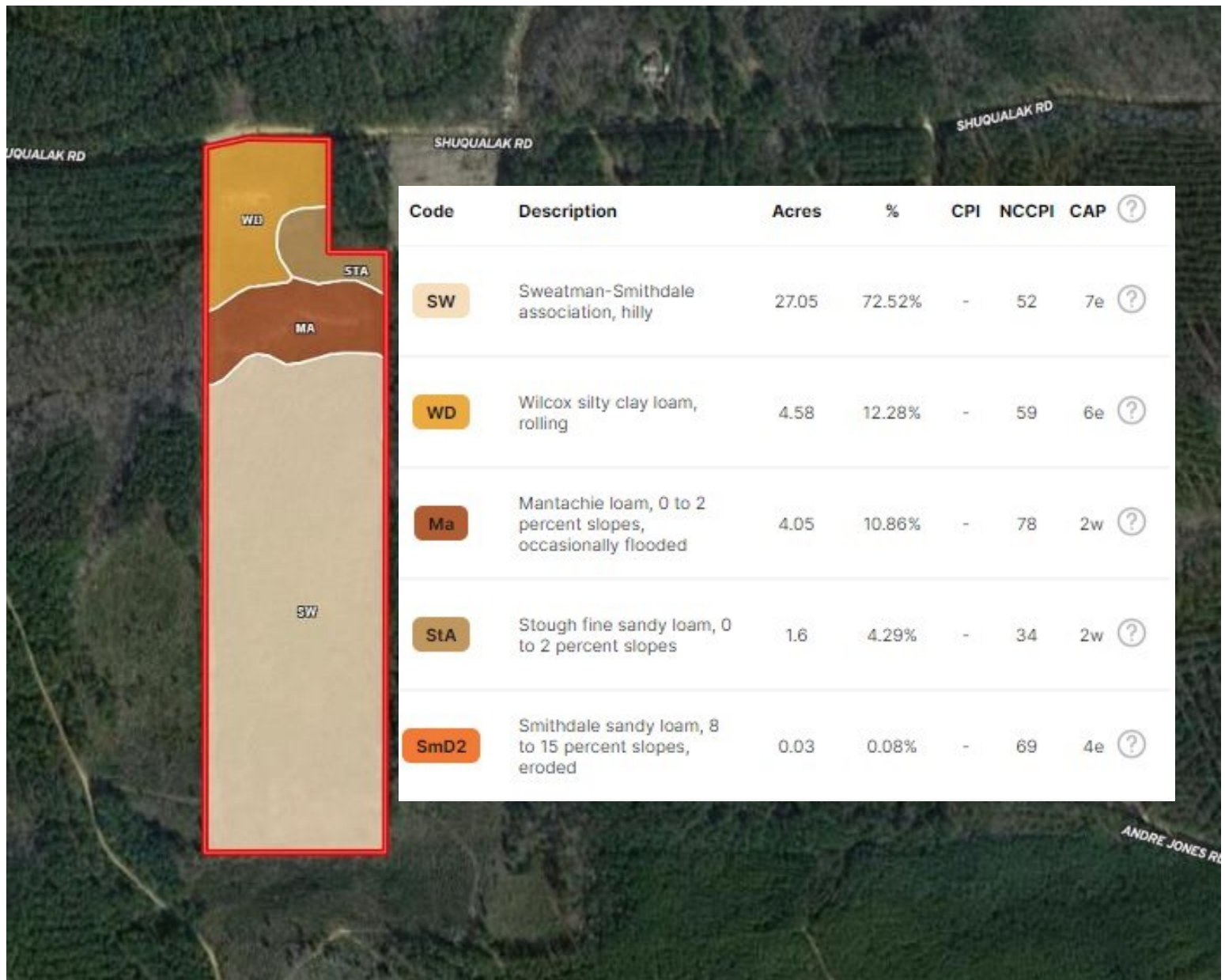


A Real Estate Expert You Can Trust
TomSmithLandandHomes.com

Information is believed to be accurate but not guaranteed.



Soil Map



MICHAEL COOPER

REALTOR®

Office: 662.268.6333

Cell: 662.285.8686

MCooper@TomSmithLand.com



A Real Estate Expert You Can Trust

TomSmithLandandHomes.com

Information is believed to be accurate but not guaranteed.



Directional Map



Google Map Link

Directions from the intersection of MS-15 and MS-14 in Louisville, MS: Travel east on MS-14 for 20.7 miles. Turn right onto MS-490 W and travel 2.0 miles. Turn left onto Butler Rd. and travel 7.8 miles. Turn left onto Shuqualak Rd. After 2.2 miles, the property will be on the right.

MICHAEL COOPER

REALTOR®

Office: 662.268.6333

Cell: 662.285.8686

MCooper@TomSmithLand.com



A Real Estate Expert You Can Trust

TomSmithLandandHomes.com

Information is believed to be accurate but not guaranteed.

