



78.7+/- ACRES IN MADISON COUNTY, MS

\$172,500



Here is it—just what you’ve been looking for! An affordable piece of land in Madison County, MS, that you can shape and develop into your ideal hunting property, all while you watch your trees grow for the next 30 years. This tract is located in a beautiful area of North Madison County. Most of the property is planted in 3-year-old pines that are growing and healthy. Plenty of road frontage allows you to have multiple entrances to hunt, depending on the wind direction. All this frontage also enables you to divide the property into smaller tracts. This 78.7+/- acre property is a clean slate that will allow you to develop the road system and food plots exactly where and how you want them. The rolling hills provide funnels and corridors ideal for ambushing from higher spots. The entire property is surrounded by neighbors with mature timber, allowing for many deer bedding opportunities. Let your imagination run wild on how you want to cultivate this gem. Water and electricity are available, making this the perfect place for a small cabin and getaway for you, your family, and your friends.



**STEVE
MARTENS**
REALTOR®

Office: 601.898.2772
Cell: 601.573.2962
Steve@TomSmithLand.com



A Real Estate Expert You Can Trust

TomSmithLandandHomes.com

Information is believed to be accurate but not guaranteed.





STEVE MARTENS

REALTOR® *Licensed in MS & AL*

Office: 601.898.2772

Cell: 601.573.2962

Steve@TomSmithLand.com



A Real Estate Expert You Can Trust

TomSmithLandandHomes.com

Information is believed to be accurate but not guaranteed.





AERIAL MAP



[Click HERE for interactive map](#)

STEVE MARTENS

REALTOR® *Licensed in MS & AL*

Office: 601.898.2772

Cell: 601.573.2962

Steve@TomSmithLand.com



A Real Estate Expert You Can Trust

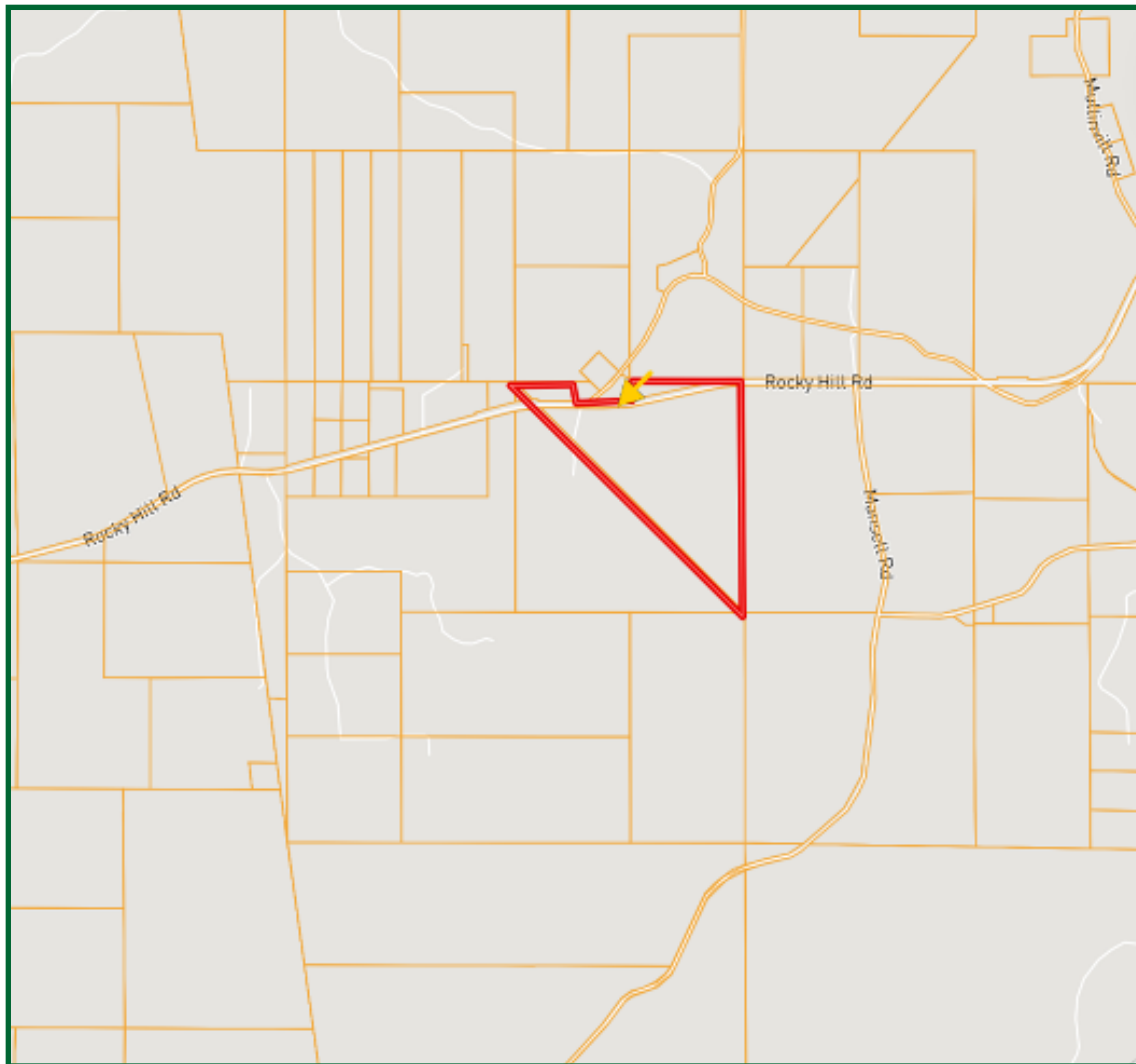
TomSmithLandandHomes.com

Information is believed to be accurate but not guaranteed.





OWNERSHIP MAP



STEVE MARTENS

REALTOR® *Licensed in MS & AL*

Office: 601.898.2772

Cell: 601.573.2962

Steve@TomSmithLand.com



A Real Estate Expert You Can Trust

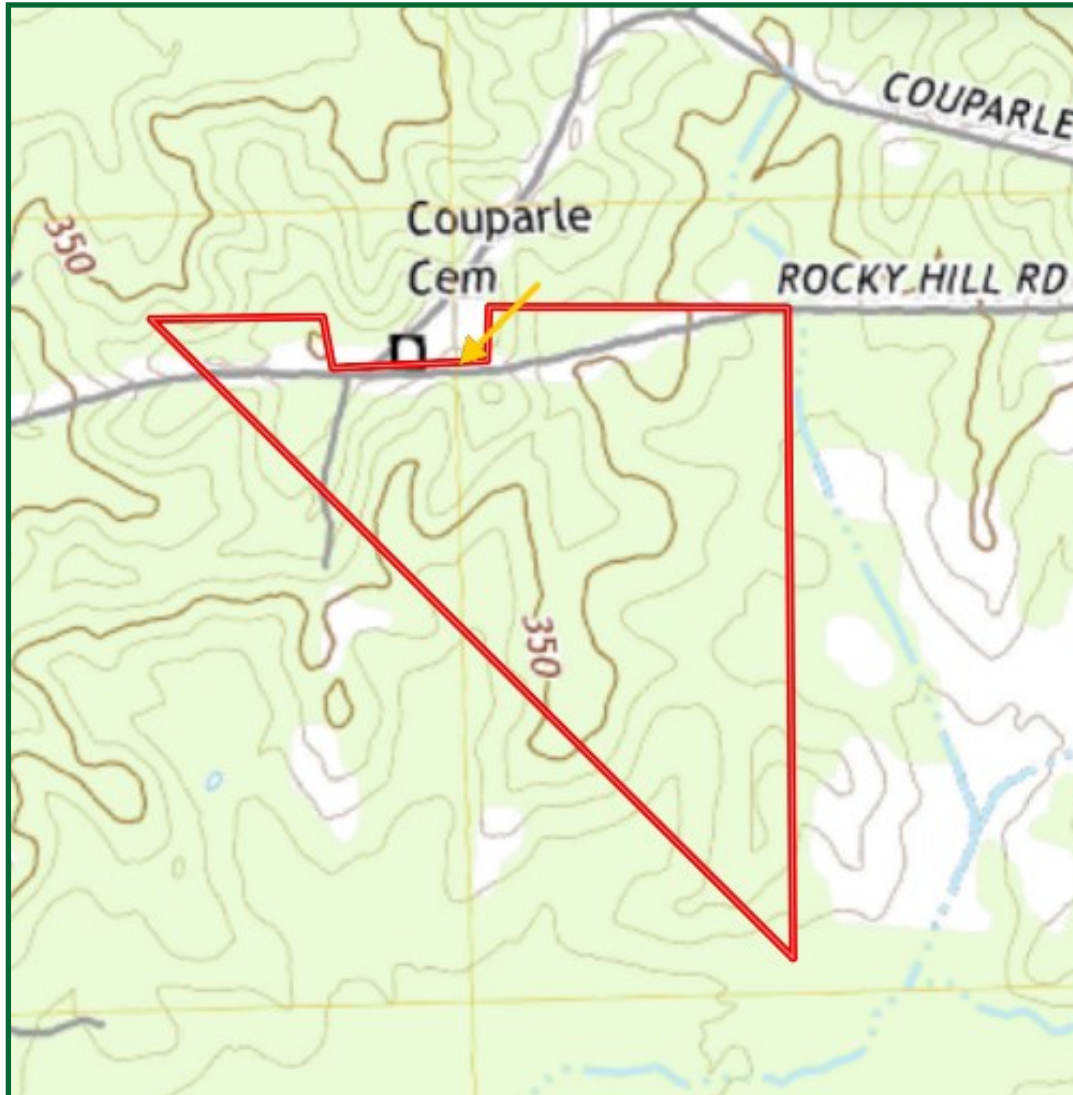
TomSmithLandandHomes.com

Information is believed to be accurate but not guaranteed.





TOPO MAP



STEVE MARTENS

REALTOR® *Licensed in MS & AL*

Office: 601.898.2772

Cell: 601.573.2962

Steve@TomSmithLand.com



A Real Estate Expert You Can Trust

TomSmithLandandHomes.com

Information is believed to be accurate but not guaranteed.





SOIL MAP



Code	Description	Acres	%	CPI	NOCPI	CAP	?
SpD2	Smithdale-Providence complex, 8 to 12 percent slopes, eroded	32.09	41.37%	-	60	4c	?
SpE2	Smithdale-Providence complex, 12 to 17 percent slopes, eroded	22.89	29.06%	-	57	6a	?
PoC2	Providence silt loam, 5 to 8 percent slopes, eroded	22.88	28.78%	-	28	3a	?
Ar	Ariel silt loam	0.64	0.81%	-	76	2w	?

STEVE MARTENS

REALTOR® *Licensed in MS & AL*

Office: 601.898.2772

Cell: 601.573.2962

Steve@TomSmithLand.com



A Real Estate Expert You Can Trust

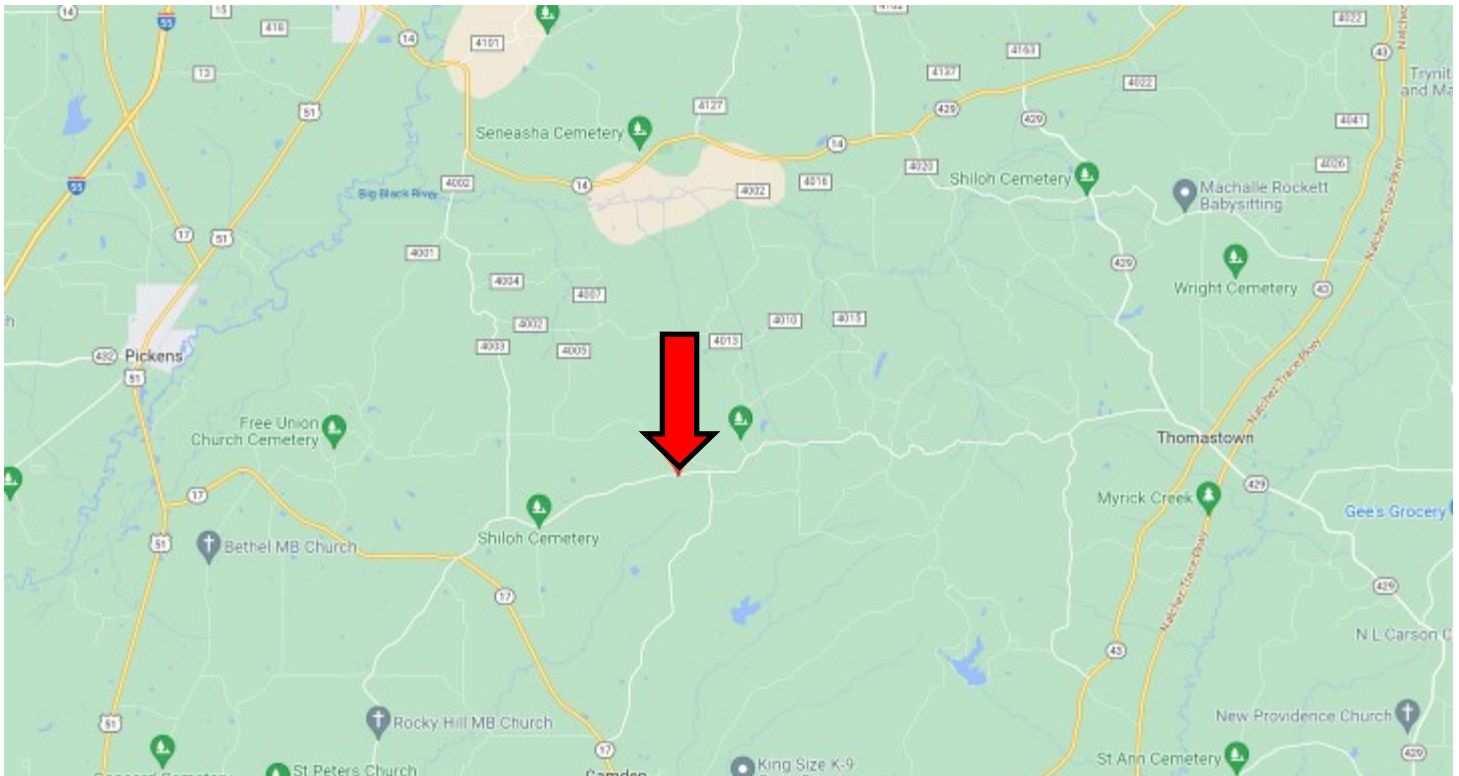
TomSmithLandandHomes.com

Information is believed to be accurate but not guaranteed.





DIRECTIONAL MAP



Directions from Hwy 43 and Hwy 16 in Canton, MS: Travel on Hwy 43 North for 14.7 miles. Turn left on Hwy 17 and travel 7.7 miles. Turn right onto Rocky Hill Road. Travel 4.2 miles, then the property will be on your left. [GOOGLE MAP LINK](#)



**STEVE
MARTENS**
REALTOR®

Office: 601.898.2772
Cell: 601.573.2962
Steve@TomSmithLand.com



A Real Estate Expert You Can Trust

TomSmithLandandHomes.com

Information is believed to be accurate but not guaranteed.

