

Homesite in Oktibbeha County, Mississippi



Parcel #4 10.03 +/- ACRES

\$80,240

Located in the scenic Oktibbeha County countryside just 12 miles south of Starkville, Mississippi, this captivating 10.03 +/- acre property offers a delightful combination of natural beauty and wooded charm. A portion of the land is covered in lush and serene woods, providing a peaceful retreat for nature enthusiasts. The property features open spaces perfect for various activities while still preserving the overall wooded appeal. Conveniently accessible from frontage on Moor High Road from an access point that will include a culvert, this 10.03 +/- acre property in Oktibbeha County presents a unique opportunity to embrace the beauty of nature while enjoying the convenience of easy access. Whether you seek a private getaway or a canvas for your creative vision, this property provides the perfect balance of wooded and open pasture. Build a home and enjoy a country lifestyle just a few minutes from the bustling college town. Two additional parcels are adjacent to this parcel.



**MICHAEL
HALFACRE**

MANAGING BROKER

Office: 662.268.6333

Cell: 662.242.4220

MHalfacre@TomSmithLand.com



A Real Estate Expert You Can Trust



MICHAEL HALFACRE

MANAGING BROKER

Office: 662.268.6333

Cell: 662.242.4220

MHalfacre@TomSmithLand.com



Expect More. Get More.

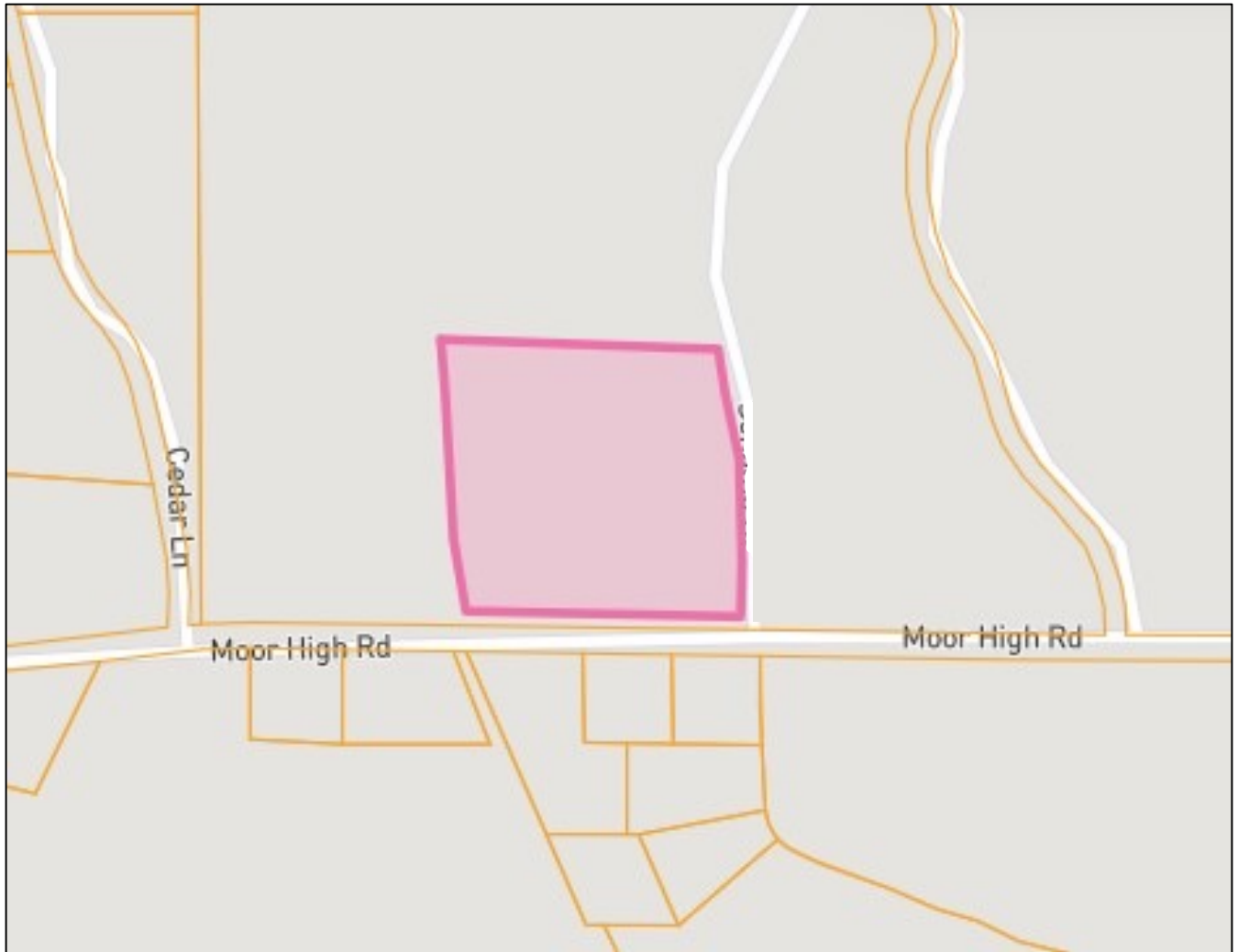
A Real Estate Expert You Can Trust

TomSmithLandandHomes.com

Information is believed to be accurate but not guaranteed.



Ownership Map



MICHAEL HALFACRE

MANAGING BROKER

Office: 662.268.6333

Cell: 662.242.4220

MHalfacre@TomSmithLand.com



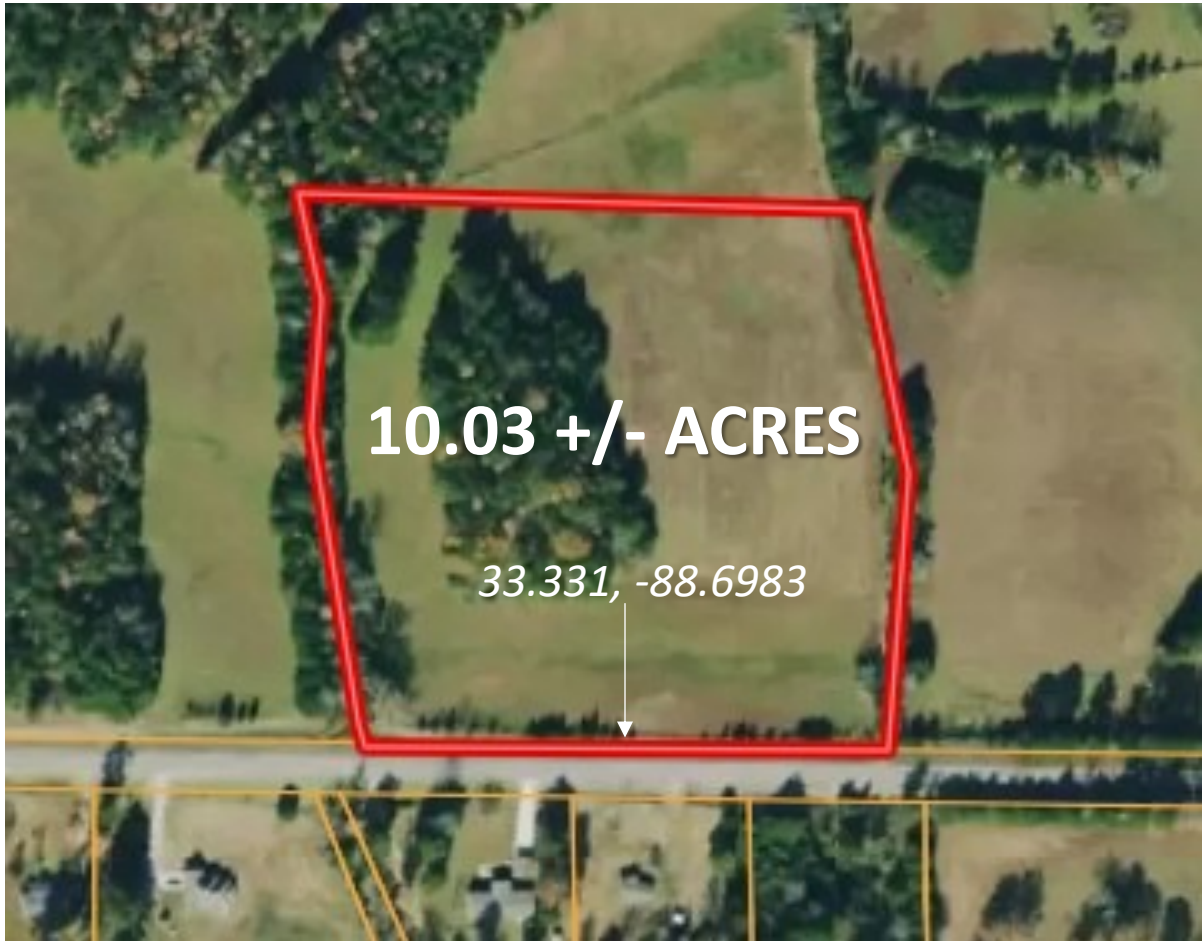
A Real Estate Expert You Can Trust

TomSmithLandandHomes.com

Information is believed to be accurate but not guaranteed.



Aerial Map



MICHAEL HALFACRE

MANAGING BROKER

Office: 662.268.6333

Cell: 662.242.4220

MHalfacre@TomSmithLand.com



A Real Estate Expert You Can Trust

TomSmithLandandHomes.com

Information is believed to be accurate but not guaranteed.



Topo Map



MICHAEL HALFACRE

MANAGING BROKER

Office: 662.268.6333

Cell: 662.242.4220

MHalfacre@TomSmithLand.com



A Real Estate Expert You Can Trust

TomSmithLandandHomes.com

Information is believed to be accurate but not guaranteed.



Soil Map



SOIL CODE	SOIL DESCRIPTION	ACRES	%	CPI	NCCPI	CAP
OtE3	Oktibbeha soils, 8 to 17 percent slopes, severely eroded	5.8	54.21	0	50	6e
Mt	Marietta fine sandy loam	4.33	40.47	0	78	2w
SuC2	Sumter silty clay loam, 5 to 8 percent slopes, moderately eroded	0.57	5.33	0	20	4e
TOTALS		10.7(*)	100%	-	59.73	4.27

MICHAEL HALFACRE

MANAGING BROKER

Office: 662.268.6333

Cell: 662.242.4220

MHalfacre@TomSmithLand.com



A Real Estate Expert You Can Trust

TomSmithLandandHomes.com

Information is believed to be accurate but not guaranteed.



FEMA Floodplain Map



MICHAEL HALFACRE

MANAGING BROKER

Office: 662.268.6333

Cell: 662.242.4220

MHalfacre@TomSmithLand.com



A Real Estate Expert You Can Trust

TomSmithLandandHomes.com

Information is believed to be accurate but not guaranteed.



Three Lots Available



Two additional lots are available adjacent to this 10.03 +/- acre lot.

The westmost lot (Parcel #3) is 8.6 +/- acres and listed at \$73,100.

The eastmost lot (Parcel #5) is 11.1 +/- acres and listed at \$99,900 and has road frontage on both Moor High Road and access on a private drive (Sonoma Drive).

MICHAEL HALFACRE

MANAGING BROKER

Office: 662.268.6333

Cell: 662.242.4220

MHalfacre@TomSmithLand.com



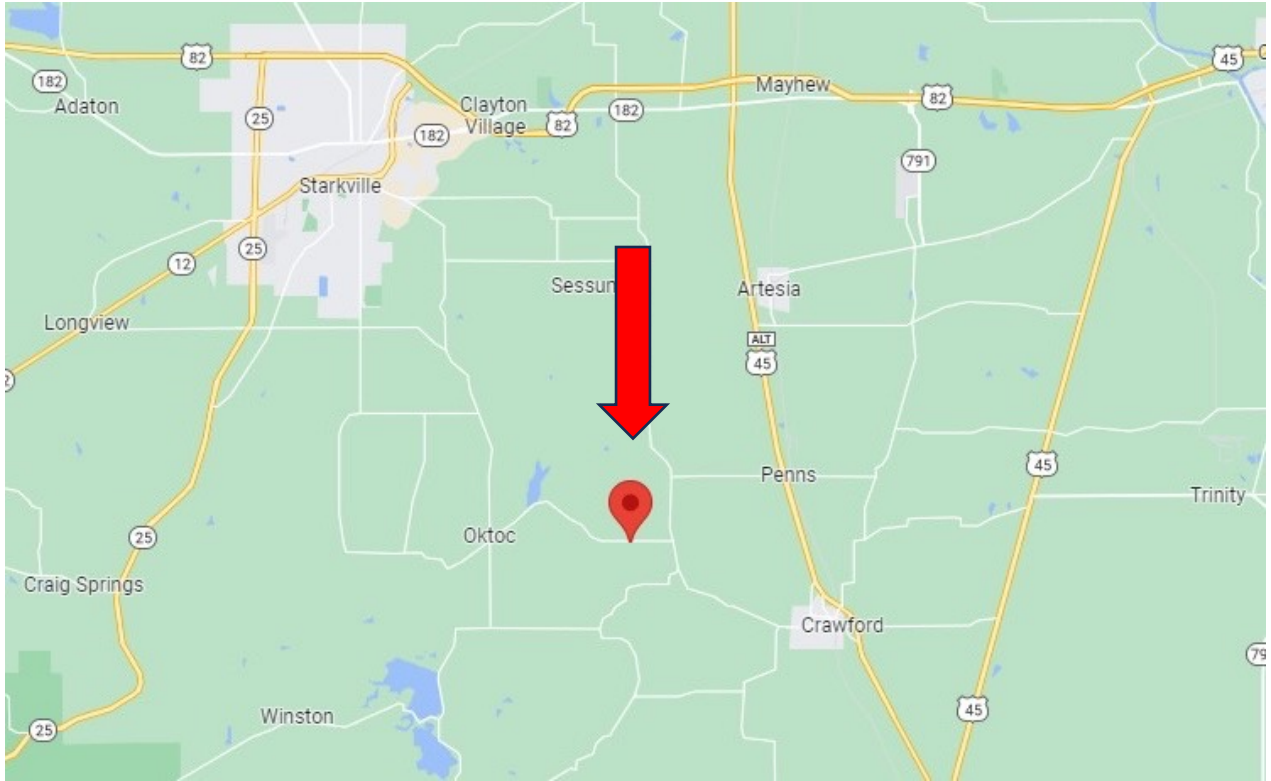
A Real Estate Expert You Can Trust

TomSmithLandandHomes.com

Information is believed to be accurate but not guaranteed.



Directional Map



From intersection of South Montgomery Street and Poorhouse Road, travel East on Poorhouse Rd for 2.2 miles. Turn right to travel South on Oktoc Rd for 6.7 miles, then left to travel East on Robinson Rd for 1.5 miles, then slight right on Moor High Rd. Continue for 2.3 miles and property will be on your left.



**MICHAEL
HALFACRE**

MANAGING BROKER

Office: 662.268.6333

Cell: 662.242.4220

MHalfacre@TomSmithLand.com



A Real Estate Expert You Can Trust