

## 2.7+/- Acre Home Site Yazoo County, MS



**\$17,000**

Welcome to your new secluded homesite in the picturesque landscapes of Yazoo County, MS. This 2.7+/- acre property offers an ideal setting for those seeking tranquility and natural beauty. It has ample space to create your dream residence. With its location in Yazoo County, residents can enjoy the charm of rural living while still having convenient access to nearby amenities and services. Utilities are available at the road. Call Danny today to schedule a viewing!

Directions from Hwy 49 and Hwy 16 in Yazoo City, MS: Travel 1.2 miles on Hwy 16/E Broad way Street. Take a slight left onto E Jefferson Street. Travel 400 feet and turn left onto Walnut Circle. Travel 300 feet and the property will be on the on left.  
Coordinates: 32.8428, -90.4064 [GOOGLE MAP LINK](#)



*Call me today!*

**DANNY WILLOUGHBY, REALTOR®**  
Danny@TomSmithLand.com  
601.898.2772 office | 601.720.9995 cell



**TomSmithLandandHomes.com**

Information is believed to be accurate but not guaranteed.





*Call me today!*

**DANNY WILLOUGHBY, REALTOR®**  
Danny@TomSmithLand.com  
601.898.2772 **office** | 601.720.9995 **cell**



**TomSmithLandandHomes.com**

Information is believed to be accurate but not guaranteed.



# Aerial Map



[Click for Interactive Map](#)



*Call me today!*

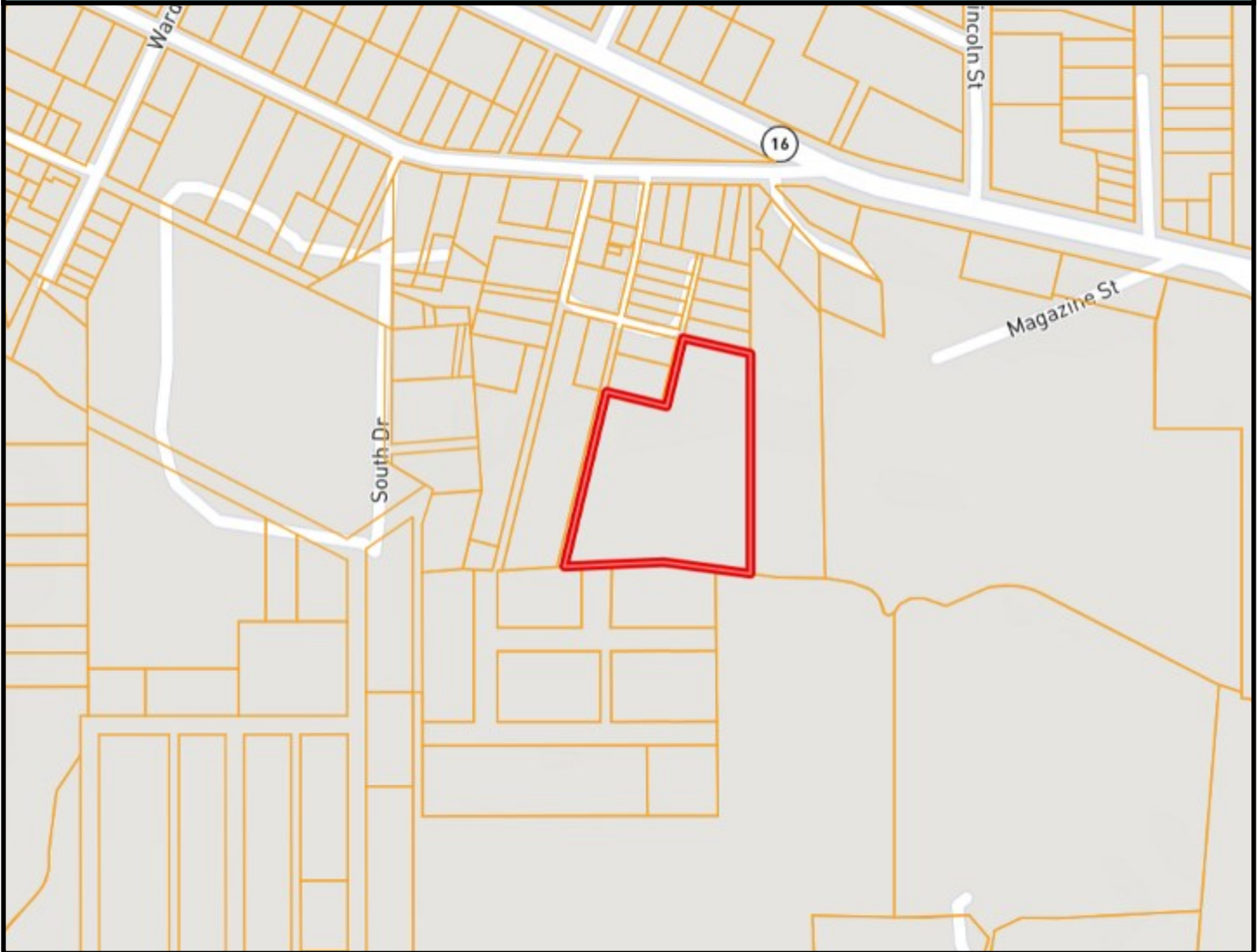
**DANNY WILLOUGHBY**, REALTOR®  
Danny@TomSmithLand.com  
601.898.2772 **office** | 601.720.9995 **cell**



**TomSmithLandandHomes.com**

Information is believed to be accurate but not guaranteed.

# Ownership Map



*Call me today!*

**DANNY WILLOUGHBY, REALTOR®**  
Danny@TomSmithLand.com  
601.898.2772 **office** | 601.720.9995 **cell**

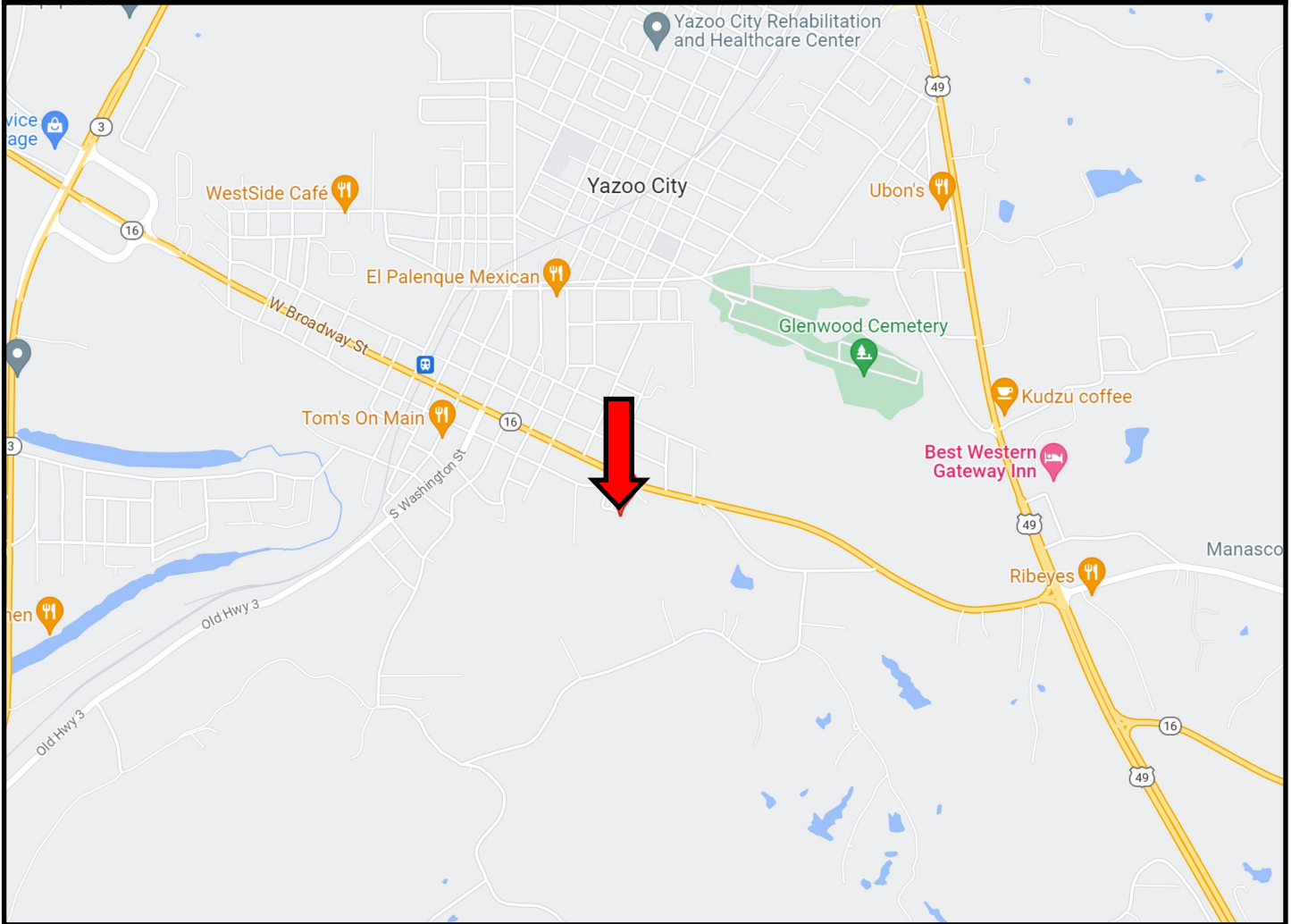


**TomSmithLandandHomes.com**

Information is believed to be accurate but not guaranteed.



# Directional Map



**Directions from Hwy 49 and Hwy 16 in Yazoo City, MS:** Travel 1.2 miles on Hwy 16/E Broadway Street. Take a slight left onto E Jefferson Street. Travel 400 feet and turn left onto Walnut Circle.

Travel 300 feet and the property will be on the on left.

Coordinates: 32.8428, -90.4064 [GOOGLE MAP LINK](#)



*Call me today!*

**DANNY WILLOUGHBY, REALTOR®**  
Danny@TomSmithLand.com  
601.898.2772 **office** | 601.720.9995 **cell**



**TomSmithLandandHomes.com**

Information is believed to be accurate but not guaranteed.