

135.17± Acre Diverse Recreational Tract Holmes County, MS



- *Attractive Home Sites*
- *Unique Outdoor Experience*
- *Food Plots with Stands*
- *Country Living*
- *Holmes Community College and I-55 Minutes Away*

\$2,572/Acre



Directions from the intersection of I-55 and Hwy 14: Take exit 146 to merge onto Hwy 14 toward Goodman. Travel 2.1 miles and the property will be on you right. **[GOOGLE MAP LINK](#)**
GPS: 32.9747, -89.9312



**SAM
SAMPLE**
REALTOR®

Office: 601.898.2772
Cell: 601.668.5697
Sam@TomSmithLand.com



A Real Estate Expert You Can Trust

TomSmithLandandHomes.com

Information is believed to be accurate but not guaranteed.



This is a unique outdoor experience close to Holmes Community College and access to I-55 near Goodman, MS, in Holmes County. The property contains 135.17+/- surveyed acres. What makes this property unique is the remoteness of the experience, although all the essentials plus much more are minutes away. This property has established trails and several food plots with deer stands. The property has hills as well as lower bottom areas. The property's physical characteristics allow for several hunters to hunt this tract at the same time safely. The property has direct access to state highway 14 on the north boundary as well as access from Church Road, a gravel county road on the southern border. The tract has utilities available on the north and south end of the property, allowing a choice of several ideal locations for a permanent home site or a cabin. The college is another unique feature attributed to this property. The junior college has many events offered to the public, from sporting activities, musical and drama, and comprehensive academics and vocational arts courses. If you have been considering hunting, or relaxing in a country area, now is the time to request a private showing and experience what could be yours. Call Sam Sample today for a showing!

SAM SAMPLE
REALTOR®
Office: 601.898.2772
Cell: 601.668.5697
Sam@TomSmithLand.com



A Real Estate Expert You Can Trust

TomSmithLandandHomes.com

Information is believed to be accurate but not guaranteed.





SAM SAMPLE
REALTOR®

Office: 601.898.2772

Cell: 601.668.5697

Sam@TomSmithLand.com



A Real Estate Expert You Can Trust

TomSmithLandandHomes.com

Information is believed to be accurate but not guaranteed.





SAM SAMPLE
REALTOR®

Office: 601.898.2772

Cell: 601.668.5697

Sam@TomSmithLand.com

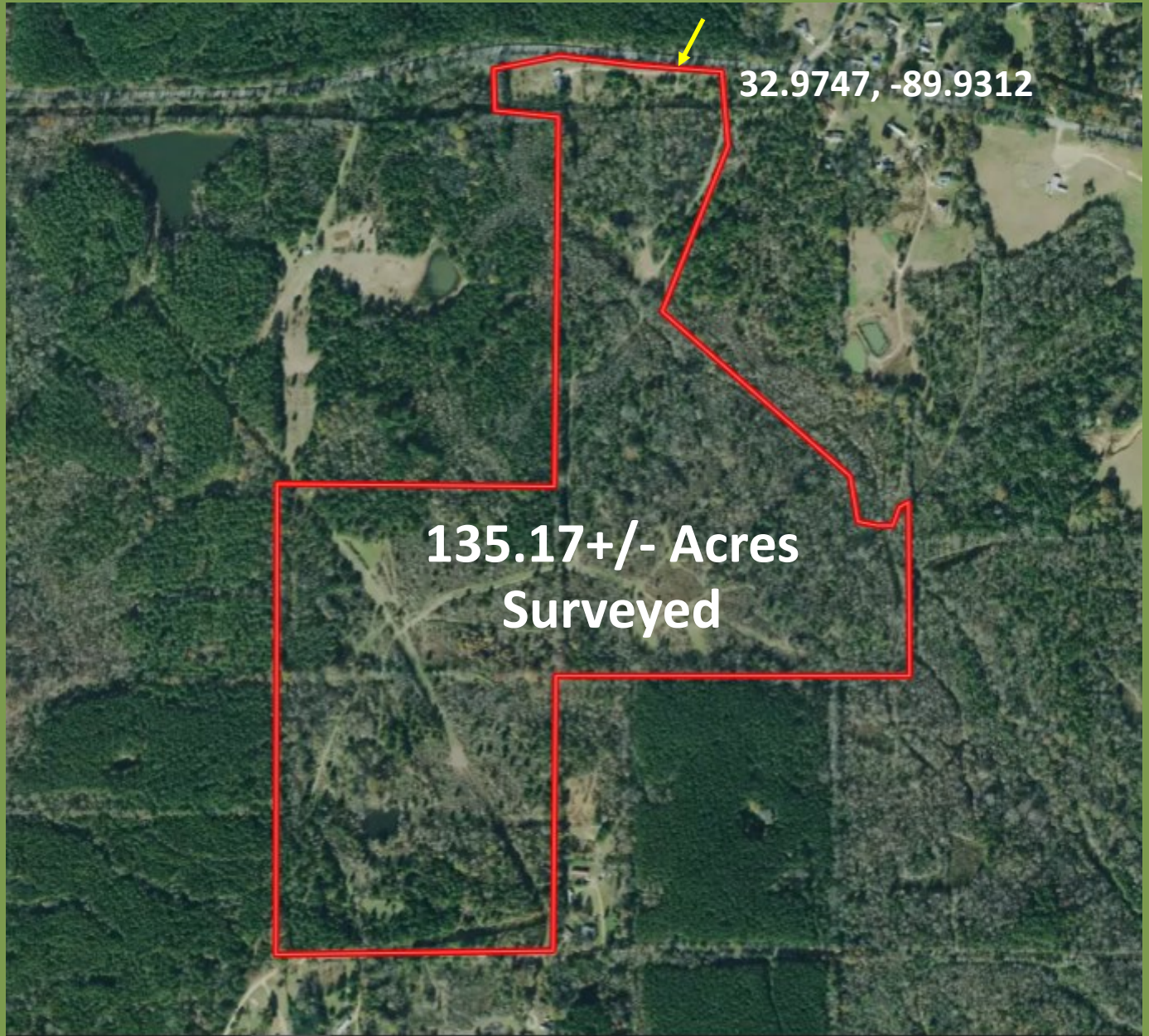


A Real Estate Expert You Can Trust

TomSmithLandandHomes.com

Information is believed to be accurate but not guaranteed.





AERIAL MAP

[CLICK HERE FOR AN INTERACTIVE MAP](#)

SAM SAMPLE
REALTOR®

Office: 601.898.2772

Cell: 601.668.5697

Sam@TomSmithLand.com

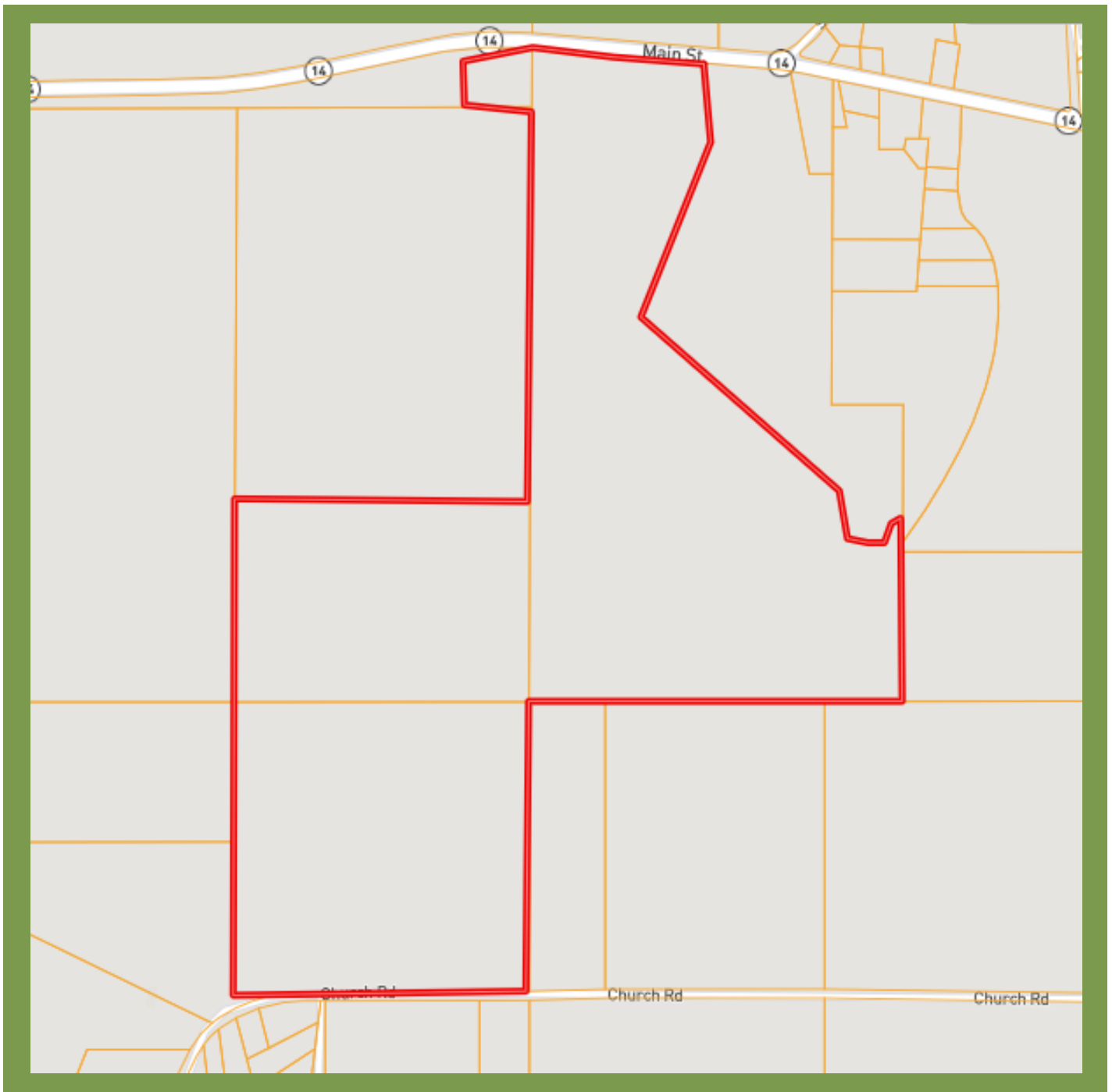


A Real Estate Expert You Can Trust

TomSmithLandandHomes.com

Information is believed to be accurate but not guaranteed.





OWNERSHIP MAP

SAM SAMPLE
REALTOR®

Office: 601.898.2772

Cell: 601.668.5697

Sam@TomSmithLand.com

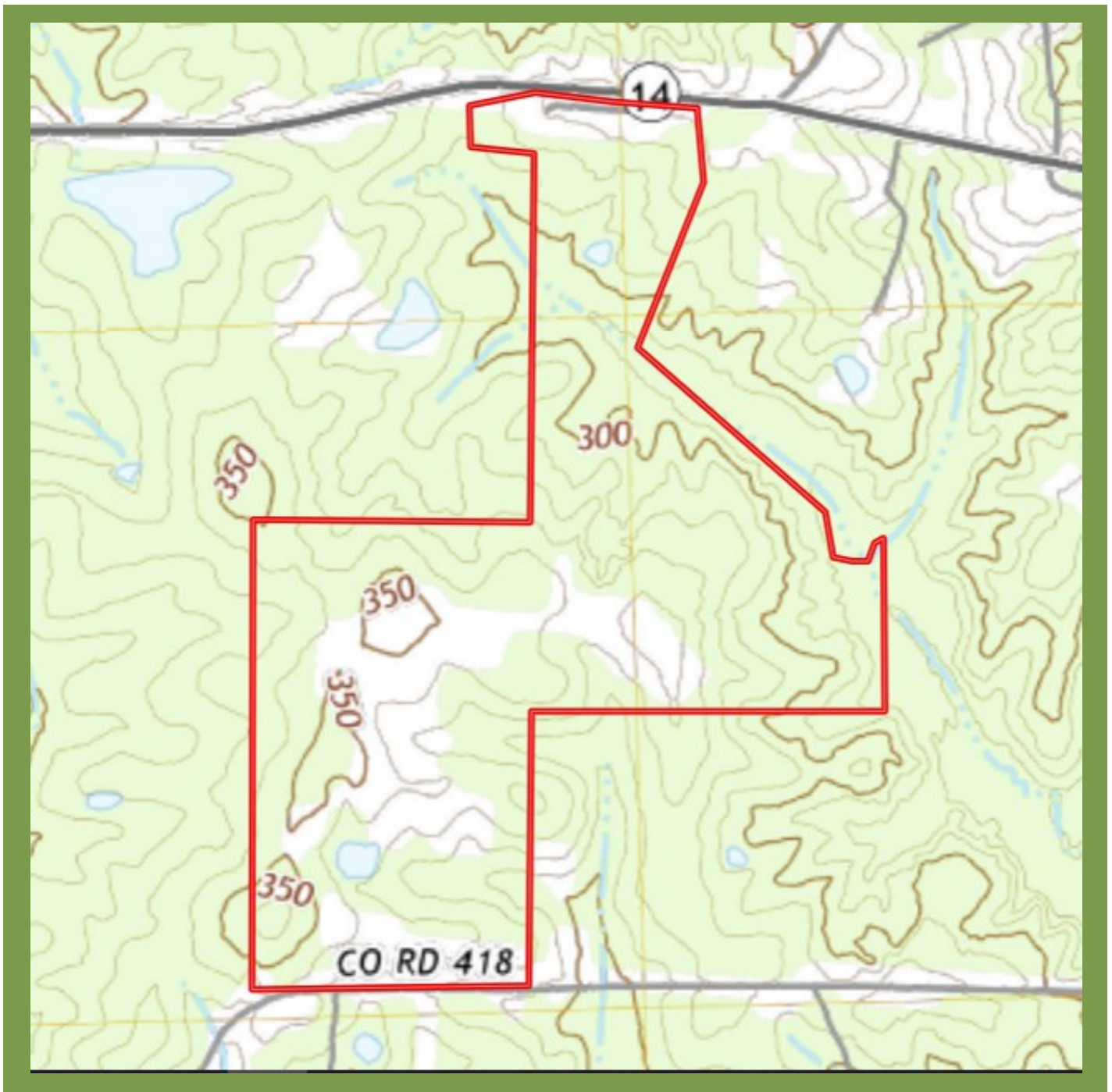


A Real Estate Expert You Can Trust

TomSmithLandandHomes.com

Information is believed to be accurate but not guaranteed.





TOPO MAP

SAM SAMPLE
REALTOR®

Office: 601.898.2772

Cell: 601.668.5697

Sam@TomSmithLand.com

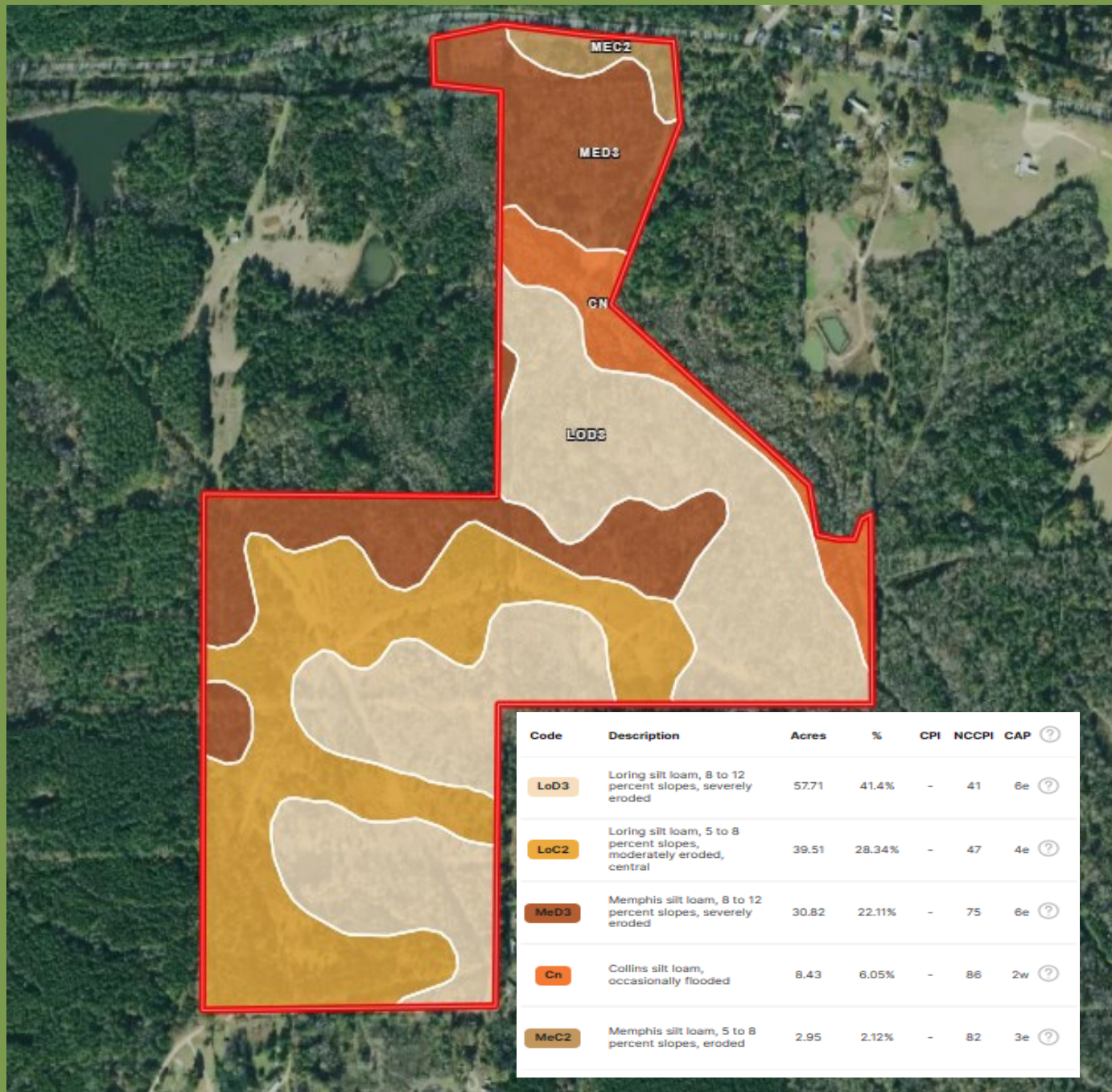


A Real Estate Expert You Can Trust

TomSmithLandandHomes.com

Information is believed to be accurate but not guaranteed.





SOIL MAP

SAM SAMPLE
REALTOR®

Office: 601.898.2772

Cell: 601.668.5697

Sam@TomSmithLand.com

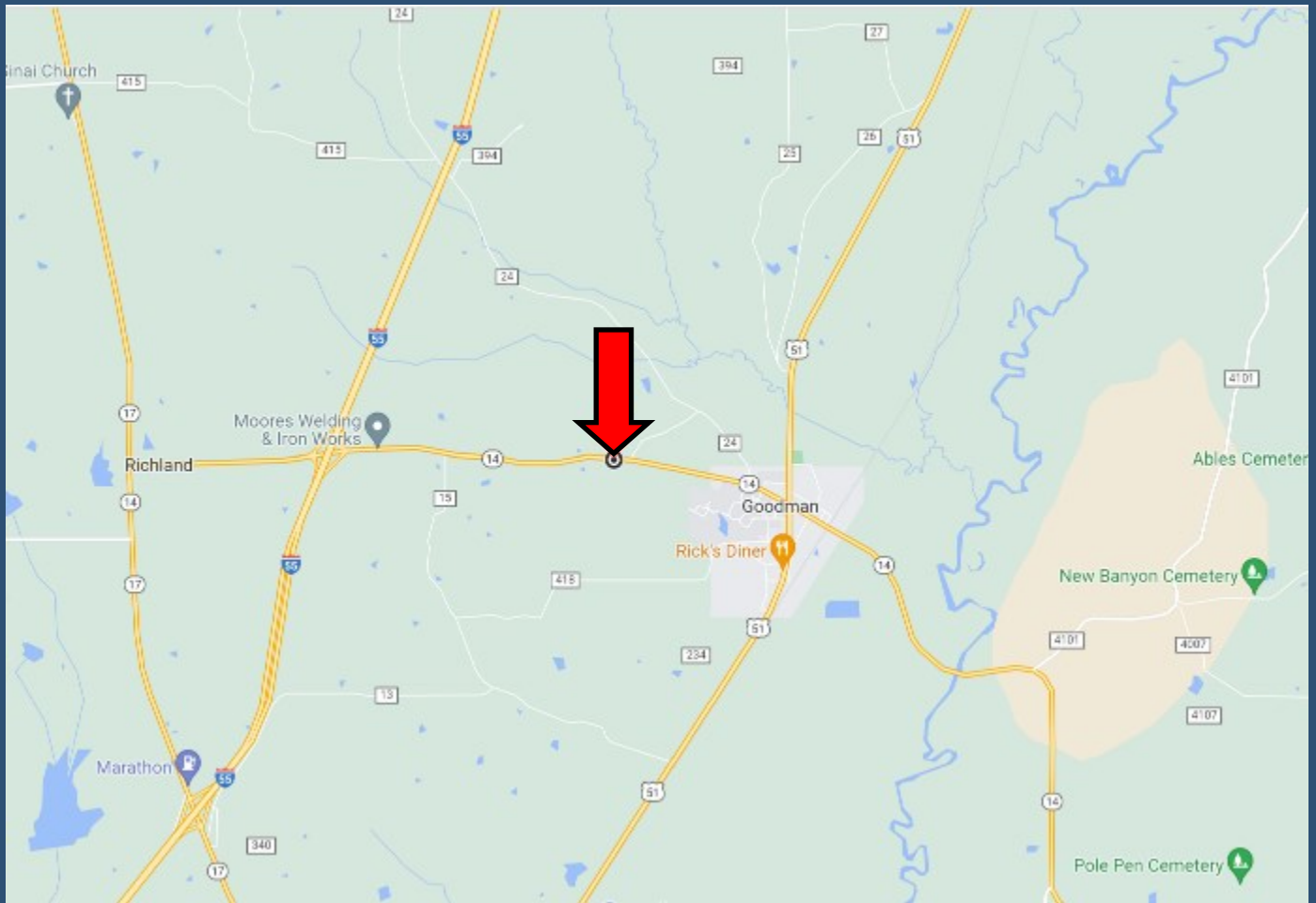


A Real Estate Expert You Can Trust

TomSmithLandandHomes.com

Information is believed to be accurate but not guaranteed.





DIRECTIONAL MAP



Directions from the intersection of I-55 and Hwy 14: Take exit 146 to merge onto Hwy 14 toward Goodman. Travel 2.1 miles and the property will be on your right. **[GOOGLE MAP LINK](#)**
GPS: 32.9747, -89.9312



**SAM
SAMPLE**
REALTOR®

Office: 601.898.2772
Cell: 601.668.5697
Sam@TomSmithLand.com



A Real Estate Expert You Can Trust
TomSmithLandandHomes.com

Information is believed to be accurate but not guaranteed.

