

223+/- Acres Improved Hunting/Recreational Tract In Holmes County, MS



Welcome to your dream hunting and recreational property, an extraordinary 223+/- acre retreat in Holmes County, MS. Located at the end of Willow Flat Rd, a 2+/- mile dirt road, this property offers a secluded setting within a sprawling landscape of natural beauty and abundant wildlife. This property features newly improved food plots and roads, ensuring your hunting and recreational experiences are elevated to new heights. Whether you are an avid hunter or outdoor enthusiast, take advantage of the ten improved food plots ready for planting or the two small ponds on the property. This property offers 3+/- miles of improved roads, an atv bridge, and a ford crossing behind the entrance, making access easy. Most of the property is mixed Hardwood/Pine timber, with some areas featuring planted pine. This hunting and recreational property is a true gem with its expansive acreage, natural wonders, and diverse recreational opportunities. Whether you seek an escape from the pressures of everyday life or a thrilling hunting adventure, this property offers a rare chance to own a slice of paradise. Take advantage of the chance to make this exceptional property your own! Call John Delpapa today!

Directions from the intersection of MS-17 N & I-55S in Pickens, MS: Travel north on MS-17 N for 3.5 miles. Turn left on Willow Flat Rd and travel 2 miles. The property is at the end of Willow Flat Rd and marked with signs.



**JOHN
DELPAPA**
REALTOR®

MS Registered Forester | Associate Wildlife Biologist

Office: 662.268.6333

Cell: 662.788.2455

John@TomSmithLand.com



A Real Estate Expert You Can Trust

TomSmithLandandHomes.com

Information is believed to be accurate but not guaranteed.

2011-2023
BEST
BROKERAGES



**JOHN
DELPAPA**
REALTOR®

MS Registered Forester | Associate Wildlife Biologist

Office: 662.268.6333

Cell: 662.788.2455

John@TomSmithLand.com



A Real Estate Expert You Can Trust

TomSmithLandandHomes.com

Information is believed to be accurate but not guaranteed.

2011-2023
BEST
BROKERAGES



**JOHN
DELPAPA**

REALTOR®

MS Registered Forester | Associate Wildlife Biologist

Office: 662.268.6333

Cell: 662.788.2455

John@TomSmithLand.com



A Real Estate Expert You Can Trust

TomSmithLandandHomes.com

Information is believed to be accurate but not guaranteed.

2011-2023
BEST
BROKERAGES



**JOHN
DELPAPA**
REALTOR®

MS Registered Forester | Associate Wildlife Biologist

Office: 662.268.6333

Cell: 662.788.2455

John@TomSmithLand.com



A Real Estate Expert You Can Trust



**JOHN
DELPAPA**

REALTOR®

MS Registered Forester | Associate Wildlife Biologist

Office: 662.268.6333

Cell: 662.788.2455

John@TomSmithLand.com



A Real Estate Expert You Can Trust

TomSmithLandandHomes.com

Information is believed to be accurate but not guaranteed.





**JOHN
DELPAPA**
REALTOR®

MS Registered Forester | Associate Wildlife Biologist

Office: 662.268.6333

Cell: 662.788.2455

John@TomSmithLand.com



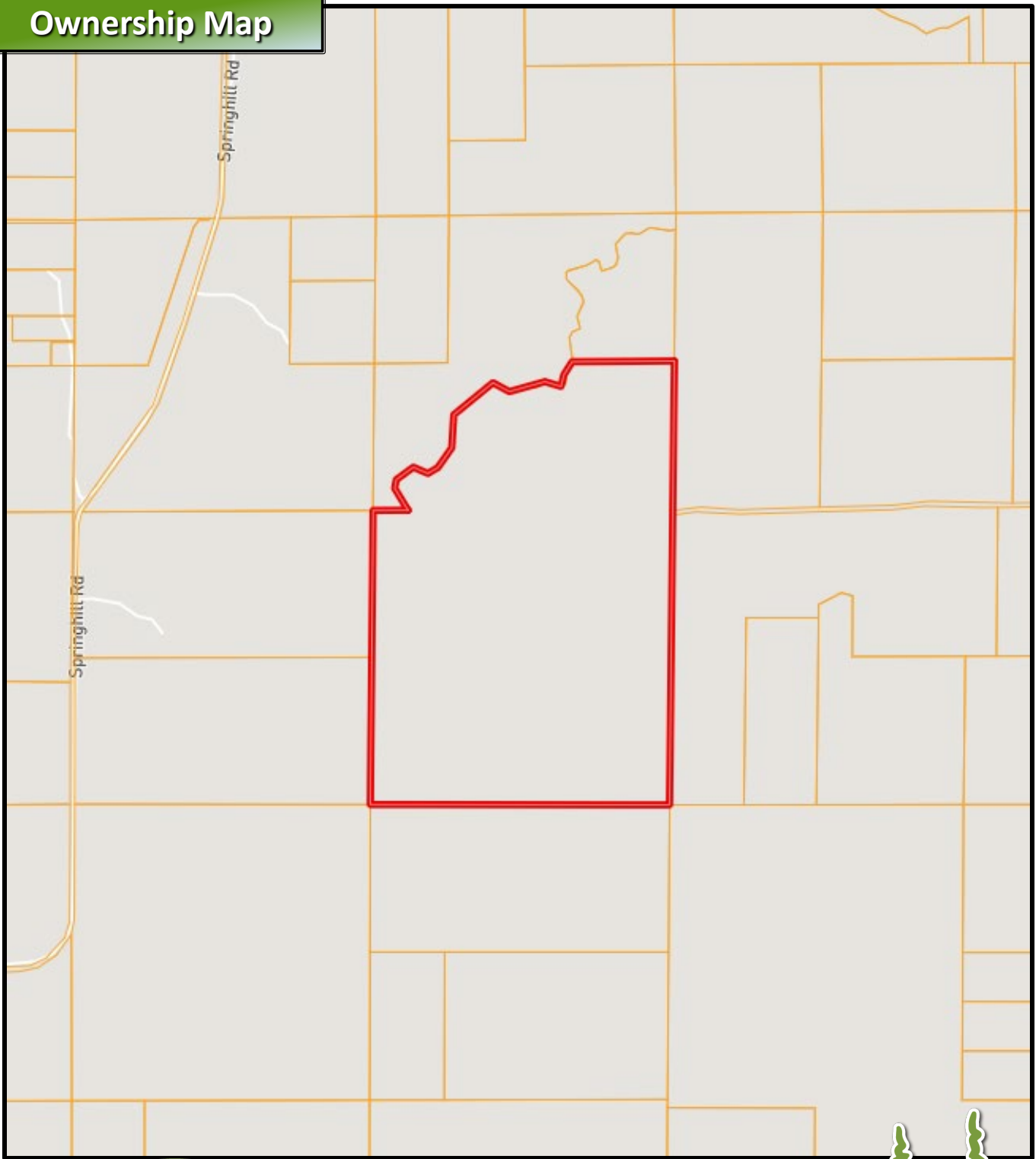
A Real Estate Expert You Can Trust

TomSmithLandandHomes.com

Information is believed to be accurate but not guaranteed.

2011-2023
BEST
BROKERAGES

Ownership Map



**JOHN
DELPAPA**
REALTOR®

MS Registered Forester | Associate Wildlife Biologist

Office: 662.268.6333

Cell: 662.788.2455

John@TomSmithLand.com



A Real Estate Expert You Can Trust

TomSmithLandandHomes.com

Information is believed to be accurate but not guaranteed.



Aerial Map

223 +/- Acres

WILLOW-FLAT RD

32.9888, -90.0194

[Click for Interactive Map](#)

**JOHN
DELPAPA**
REALTOR®

MS Registered Forester | Associate Wildlife Biologist

Office: 662.268.6333

Cell: 662.788.2455

John@TomSmithLand.com



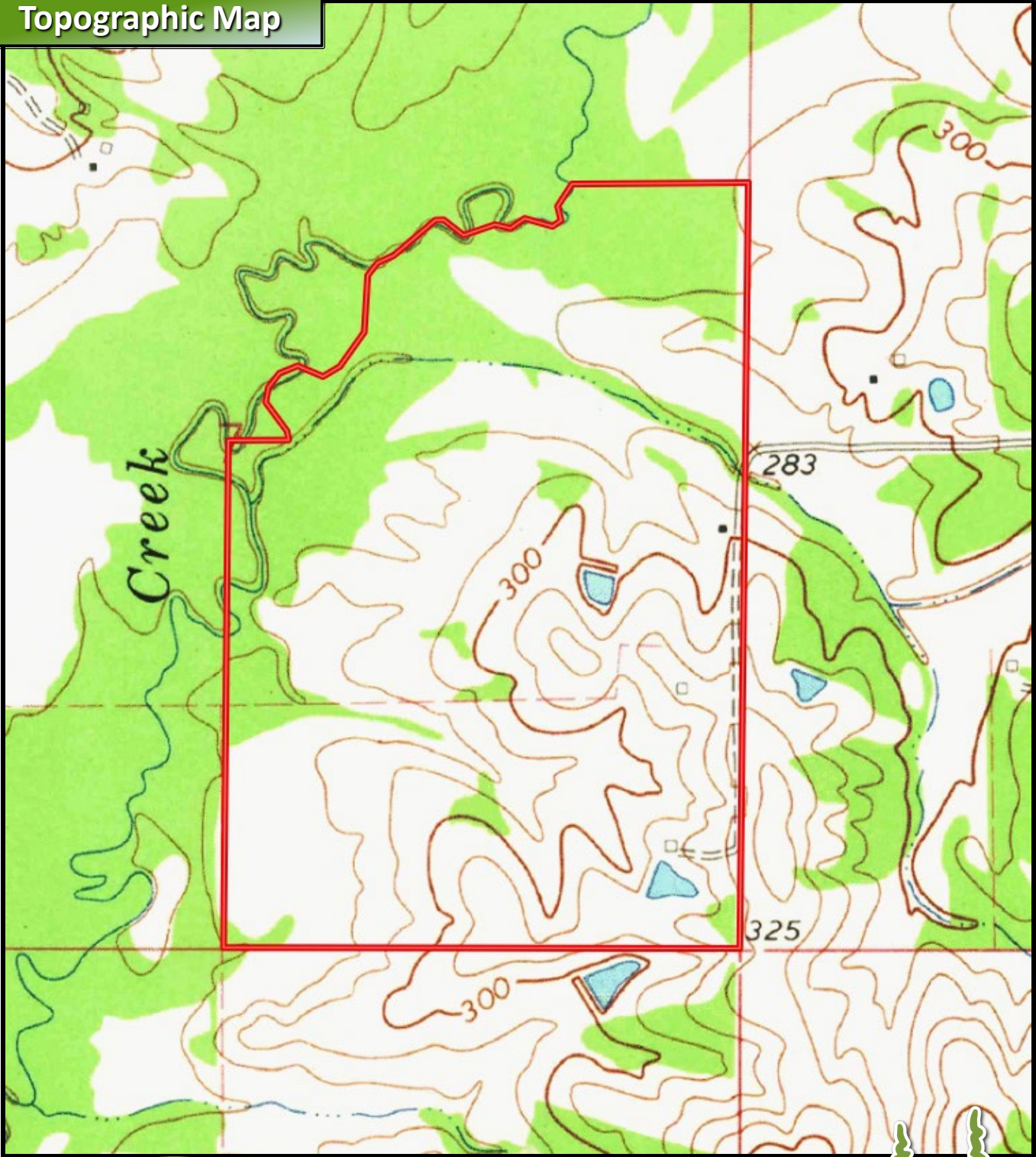
A Real Estate Expert You Can Trust

TomSmithLandandHomes.com

Information is believed to be accurate but not guaranteed.

2011-2023
BEST
BROKERAGES

Topographic Map



JOHN
DELPAPA

REALTOR®
MS Registered Forester | Associate Wildlife Biologist

Office: 662.268.6333

Cell: 662.788.2455

John@TomSmithLand.com



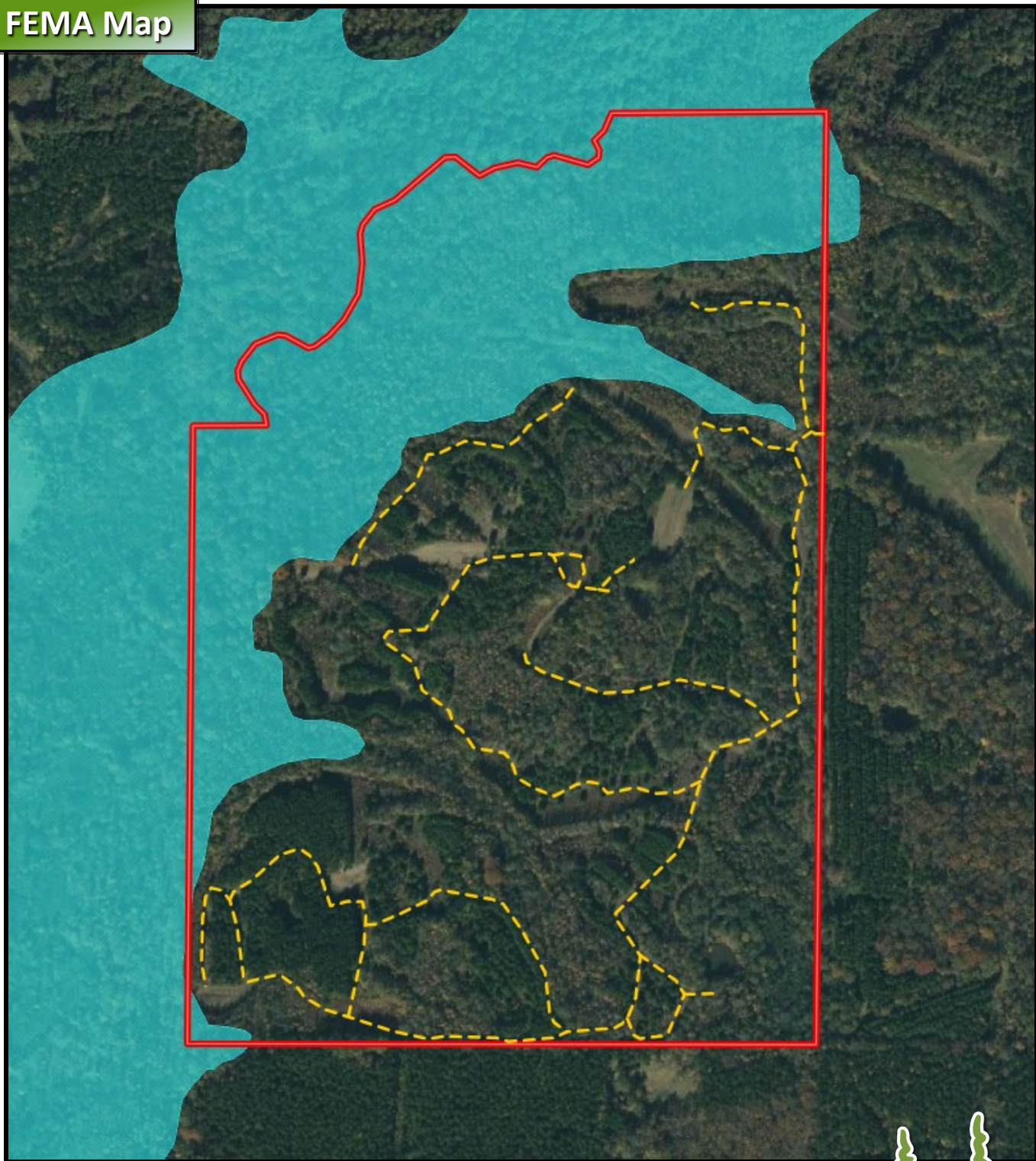
A Real Estate Expert You Can Trust

TomSmithLandandHomes.com

Information is believed to be accurate but not guaranteed.



FEMA Map



**JOHN
DELPAPA**
REALTOR®

MS Registered Forester | Associate Wildlife Biologist

Office: 662.268.6333

Cell: 662.788.2455

John@TomSmithLand.com



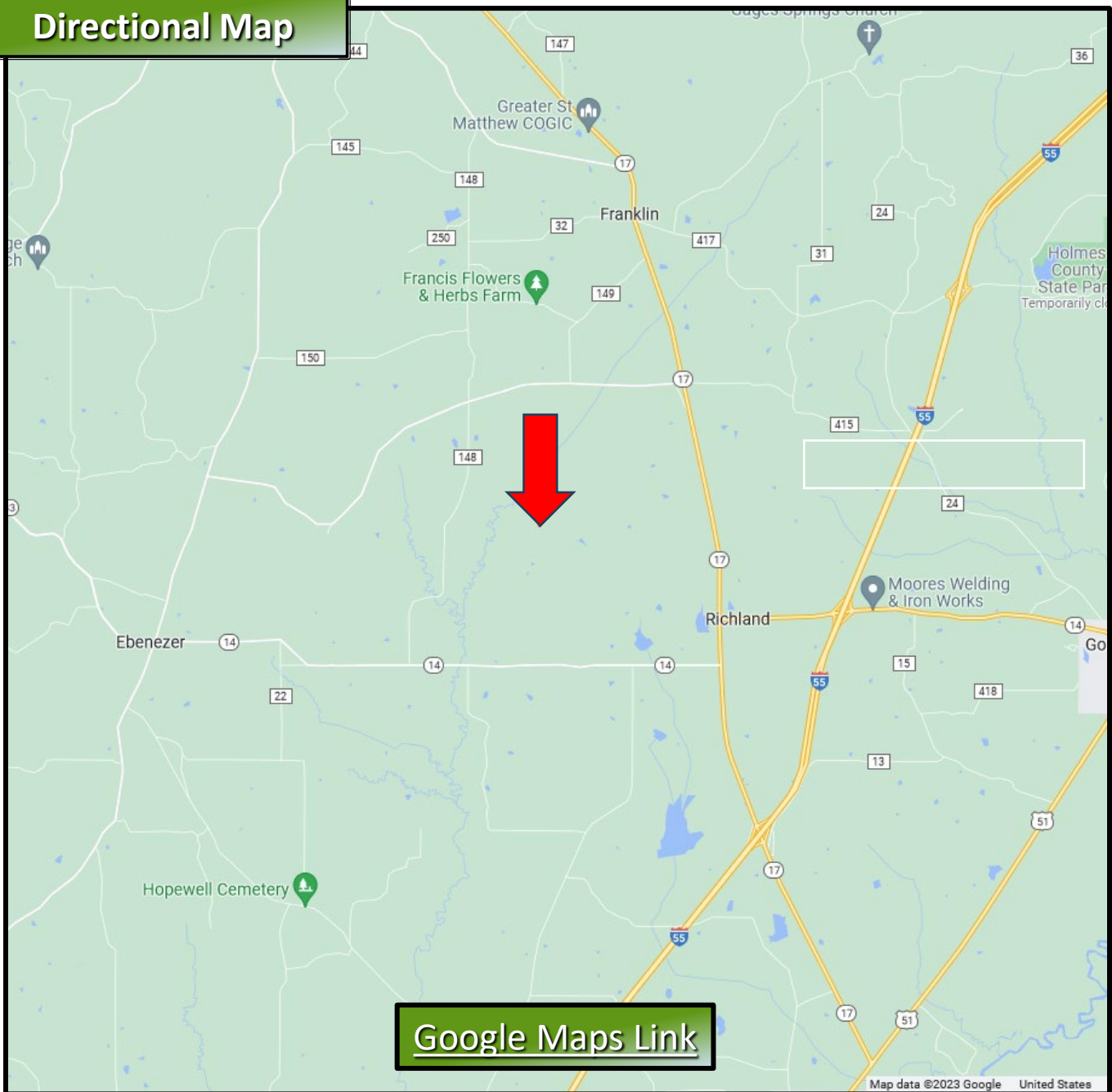
A Real Estate Expert You Can Trust

TomSmithLandandHomes.com

Information is believed to be accurate but not guaranteed.

2011-2023
BEST
BROKERAGES

Directional Map



Directions from the intersection of MS-17 N & I-55S in Pickens, MS: Travel north on MS-17 N for 3.5 miles. Turn left on Willow Flat Rd and travel 2 miles. The property is at the end of Willow Flat Rd and marked with signs.



**JOHN
DELPAPA**
REALTOR®

MS Registered Forester | Associate Wildlife Biologist

Office: 662.268.6333

Cell: 662.788.2455

John@TomSmithLand.com



A Real Estate Expert You Can Trust

TomSmithLandandHomes.com

Information is believed to be accurate but not guaranteed.

2011-2023
BEST
BROKERAGES