

Spacious Home in Durant, MS Situated on 1.68+/- Acres in Holmes County



\$299,000

Discover this charming property in Holmes County, MS. The home is on a 1.68± acre lot and has a convenient two-car carport. As you step inside, you'll find a welcoming den with a cozy fireplace and a spacious kitchen, ideal for hosting gatherings. Whether indoors or outdoors, this home provides ample space for entertainment or relaxation. With its undeniable Southern charm, the main home exhibit incredible curb appeal. Enjoy the small-town life while being less than an hour from Madison, MS. Call Sam to schedule your viewing today!

Directions from the intersection of S Jackson Street and Hwy 12 in Durant, MS: Travel west on W Mulberry Street for .3 miles. Turn right onto N Lexington St. After 194 feet, the property will be on the left.

187 N Lexington St, Durant, MS



**SAM
SAMPLE**
REALTOR®

Office: 601.898.2772

Cell: 601.668.5697

Sam@TomSmithLand.com



A Real Estate Expert You Can Trust

TomSmithLandandHomes.com

Information is believed to be accurate but not guaranteed.





SAM SAMPLE

REALTOR®

Office: 601.898.2772

Cell: 601.668.5697

Sam@TomSmithLand.com



A Real Estate Expert You Can Trust

TomSmithLandandHomes.com

Information is believed to be accurate but not guaranteed.





SAM SAMPLE
 REALTOR®
 Office: 601.898.2772
 Cell: 601.668.5697
 Sam@TomSmithLand.com



A Real Estate Expert You Can Trust
 TomSmithLandandHomes.com

Information is believed to be accurate but not guaranteed.



Aerial Map



INTERACTIVE MAP

SAM SAMPLE

REALTOR®

Office: 601.898.2772

Cell: 601.668.5697

Sam@TomSmithLand.com



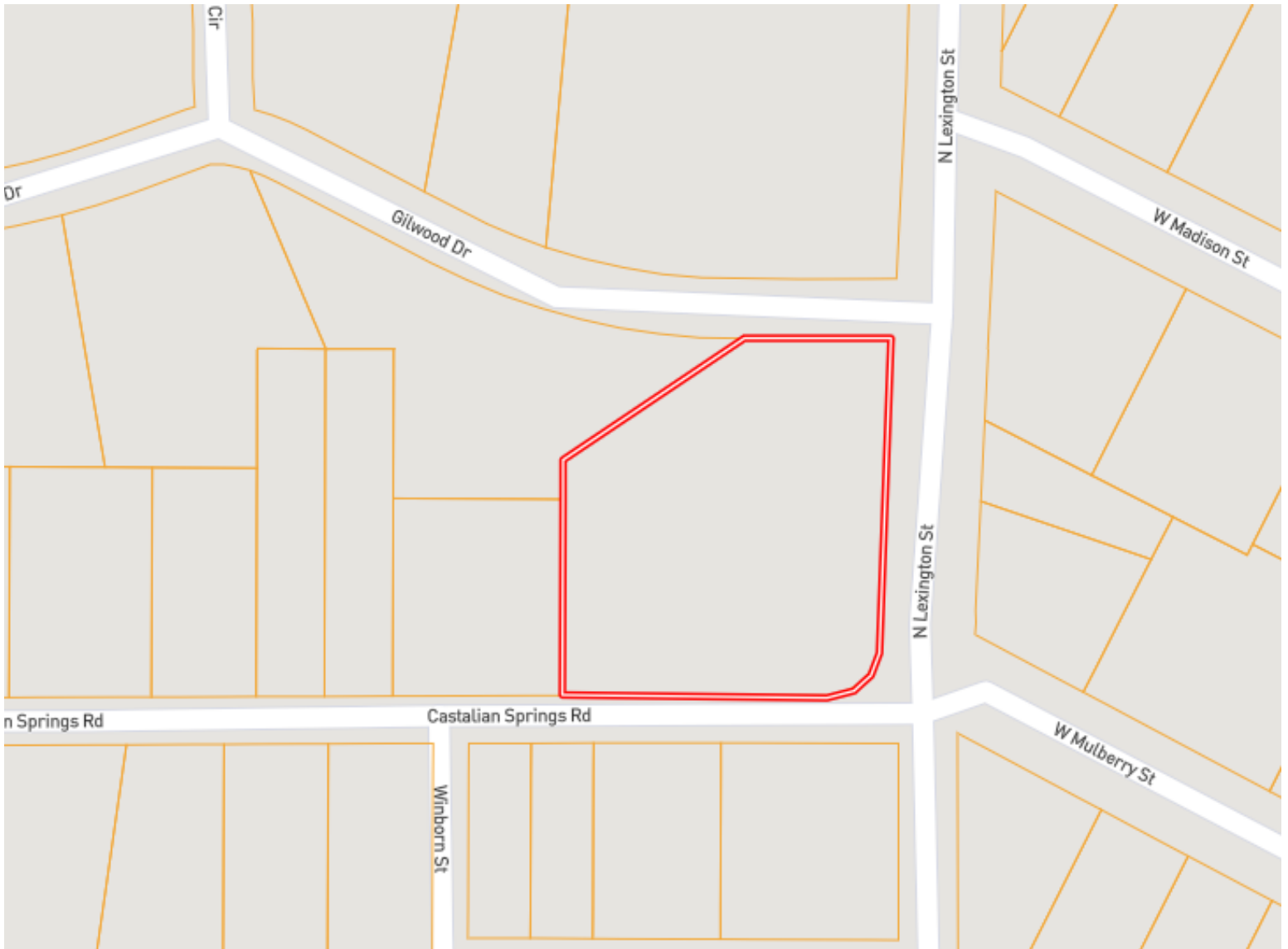
A Real Estate Expert You Can Trust

TomSmithLandandHomes.com

Information is believed to be accurate but not guaranteed.



Ownership Map



SAM SAMPLE

REALTOR®

Office: 601.898.2772

Cell: 601.668.5697

Sam@TomSmithLand.com



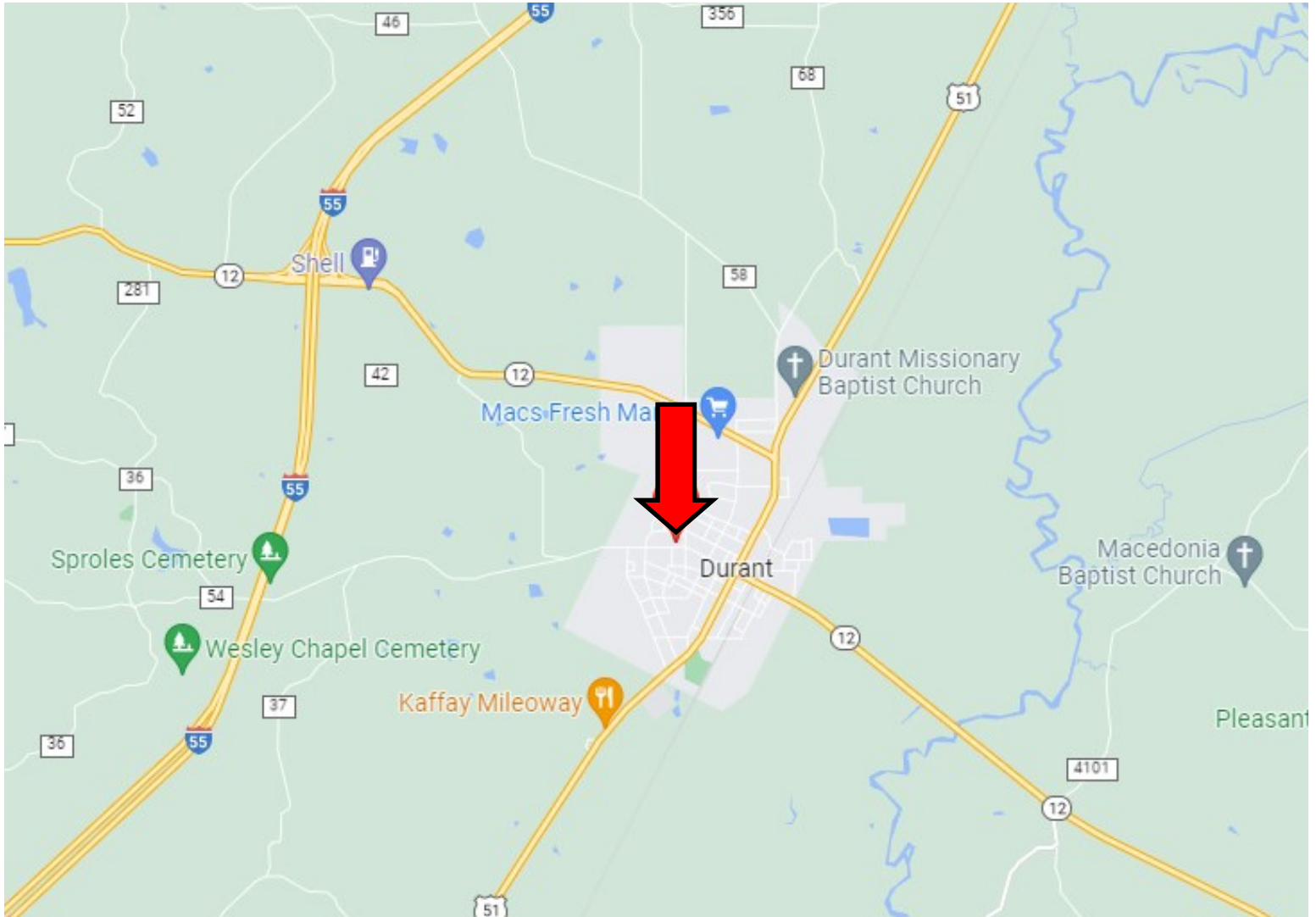
A Real Estate Expert You Can Trust

TomSmithLandandHomes.com

Information is believed to be accurate but not guaranteed.



Directional Map



Directions from the intersection of S Jackson Street and Hwy 12 in Durant, MS: Travel west on W Mulberry Street for .3 miles. Turn right onto N Lexington St. After 194 feet, the property will be on the left.

Address: 187 N Lexington St, Durant, MS, 39063 [GOOGLE MAP LINK](#)



**SAM
SAMPLE**
REALTOR®

Office: 601.898.2772
Cell: 601.668.5697
Sam@TomSmithLand.com



A Real Estate Expert You Can Trust

TomSmithLandandHomes.com

Information is believed to be accurate but not guaranteed.

