

EXCELLENT 11.7± ACRE RESIDENTIAL TRACT

Newton County, MS



This 11.7± acre residential tract is in Newton County and has road frontage on Highway 15 and Salem Church Rd. The property features mature pine and hardwood timber and a beautiful seasonal creek. The property offers multiple commercial and residential development opportunities, with several prime homesites. Utilities are available nearby as this property is near other residential properties. The property is located near I-20 between Meridian and Jackson, MS. Directions from the intersection of I-20 and MS-15 in Newton, MS: Take exit 109 Towards MS-15. Travel north on MS-15 for 1.9 miles. The property will be on the right. [GOOGLE MAP LINK](#)



**CHAD
WILSON**

REALTOR®

Office: 601.898.2772

Cell: 601.750.1970

Chad@TomSmithLand.com



Expect More. Get More.

A Real Estate Expert You Can Trust

TomSmithLandandHomes.com

Information is believed to be accurate but not guaranteed.





A Real Estate Expert
You Can Trust!

CHAD WILSON
REALTOR®

O: 601.898.2772 C: 601.750.1970

Chad@TomSmithLand.com

TomSmithLandandHomes.com



Expect More. Get More.



Information is believed to be accurate but not guaranteed.



A Real Estate Expert
You Can Trust!

CHAD WILSON
REALTOR®

O: 601.898.2772 C: 601.750.1970

Chad@TomSmithLand.com

TomSmithLandandHomes.com

**Tom
Smith
LAND AND
HOMES**

Expect More. Get More.

1st Report
2011-2024
AMERICA'S
BEST
BROKERAGES

Information is believed to be accurate but not guaranteed.

Aerial Map



A Real Estate Expert
You Can Trust!

CHAD WILSON
REALTOR®

O: 601.898.2772 C: 601.750.1970

Chad@TomSmithLand.com

TomSmithLandandHomes.com



Expect More. Get More.



Information is believed to be accurate but not guaranteed.

Ownership Map



A Real Estate Expert
You Can Trust!

CHAD WILSON
REALTOR®

O: 601.898.2772 C: 601.750.1970

Chad@TomSmithLand.com

TomSmithLandandHomes.com

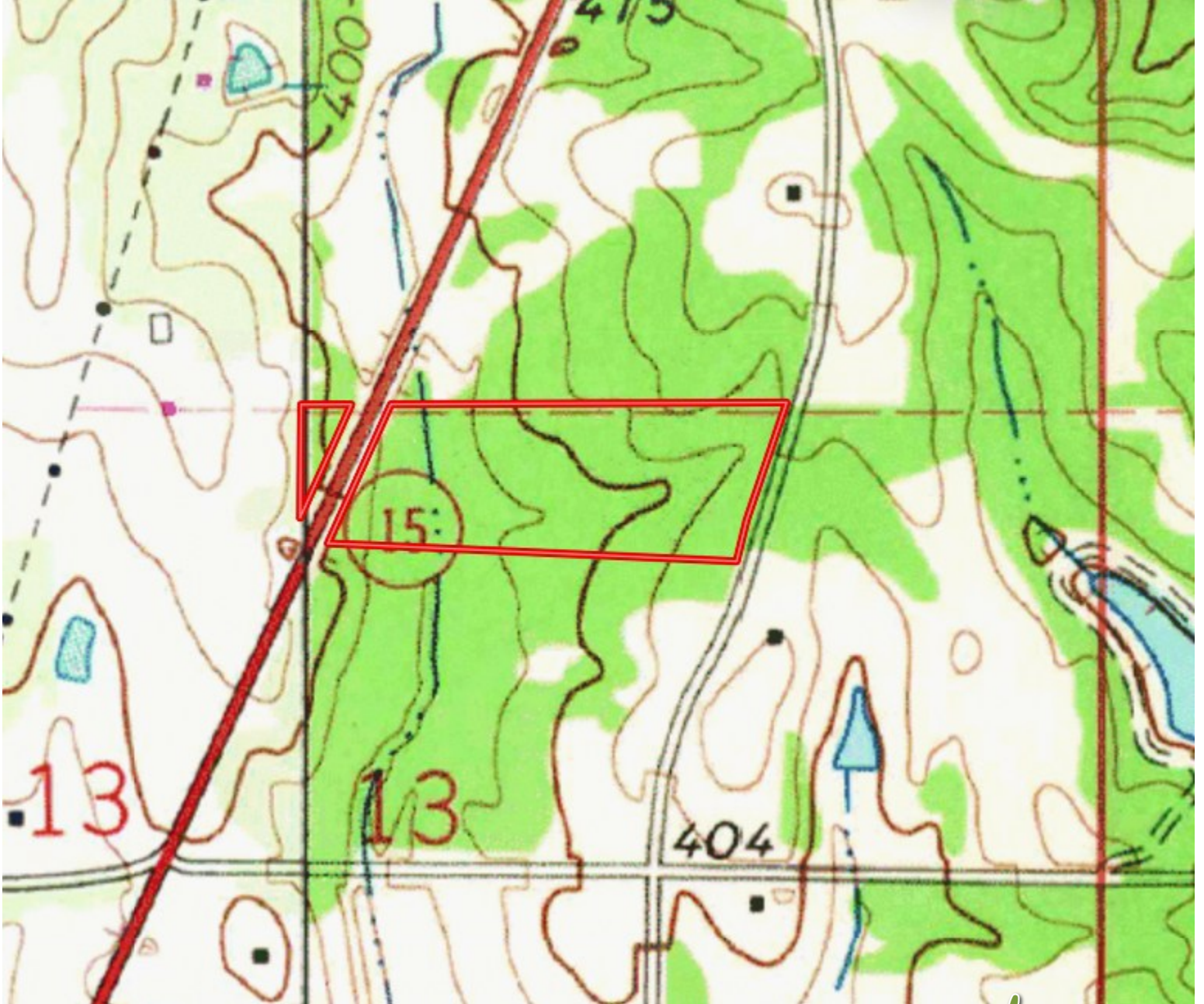


Expect More. Get More.



Information is believed to be accurate but not guaranteed.

Topography Map



A Real Estate Expert
You Can Trust!

CHAD WILSON
REALTOR®

O: 601.898.2772 C: 601.750.1970

Chad@TomSmithLand.com

TomSmithLandandHomes.com

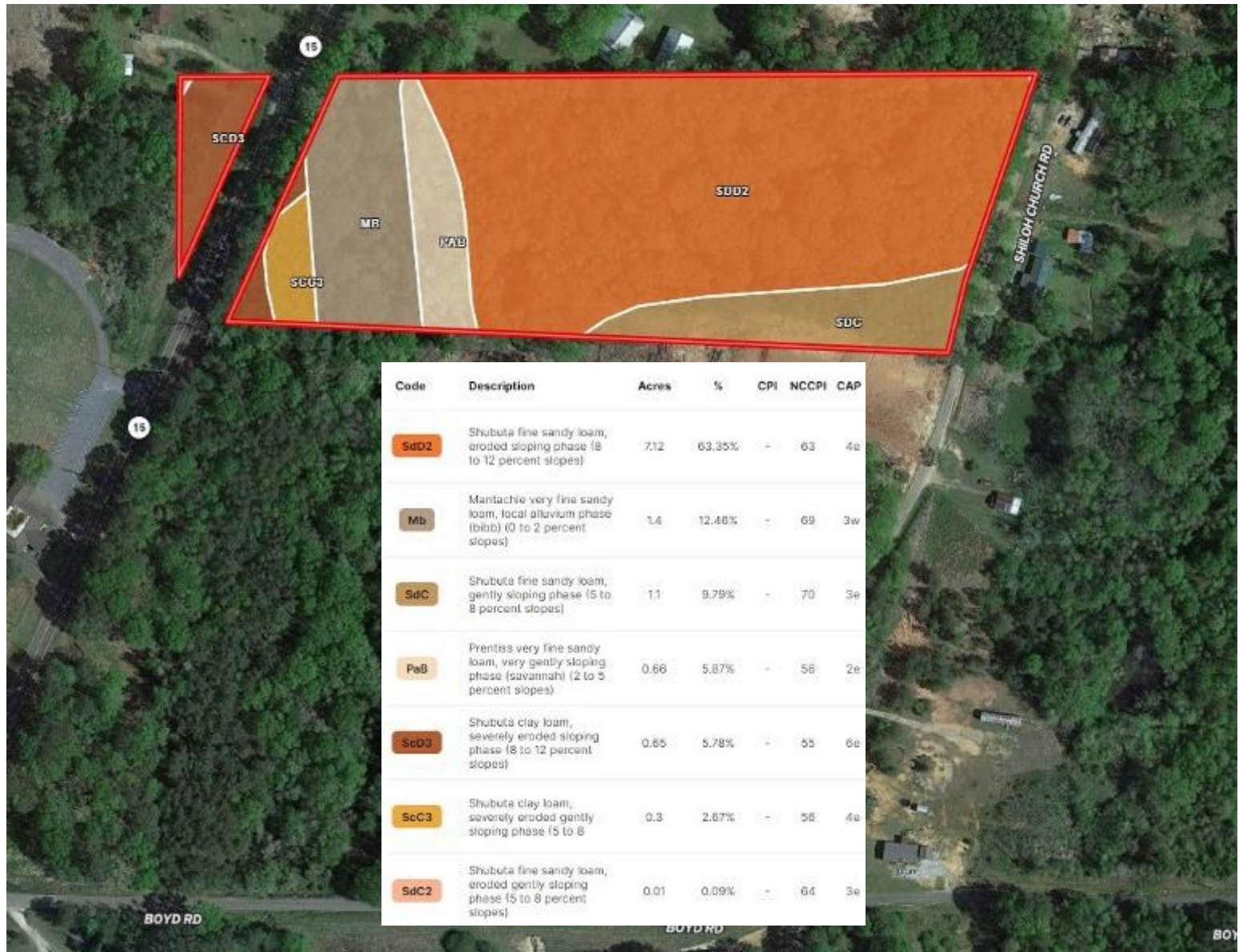


Expect More. Get More.



Information is believed to be accurate but not guaranteed.

Soil Map



A Real Estate Expert
You Can Trust!

CHAD WILSON
REALTOR®

O: 601.898.2772 C: 601.750.1970

Chad@TomSmithLand.com

TomSmithLandandHomes.com

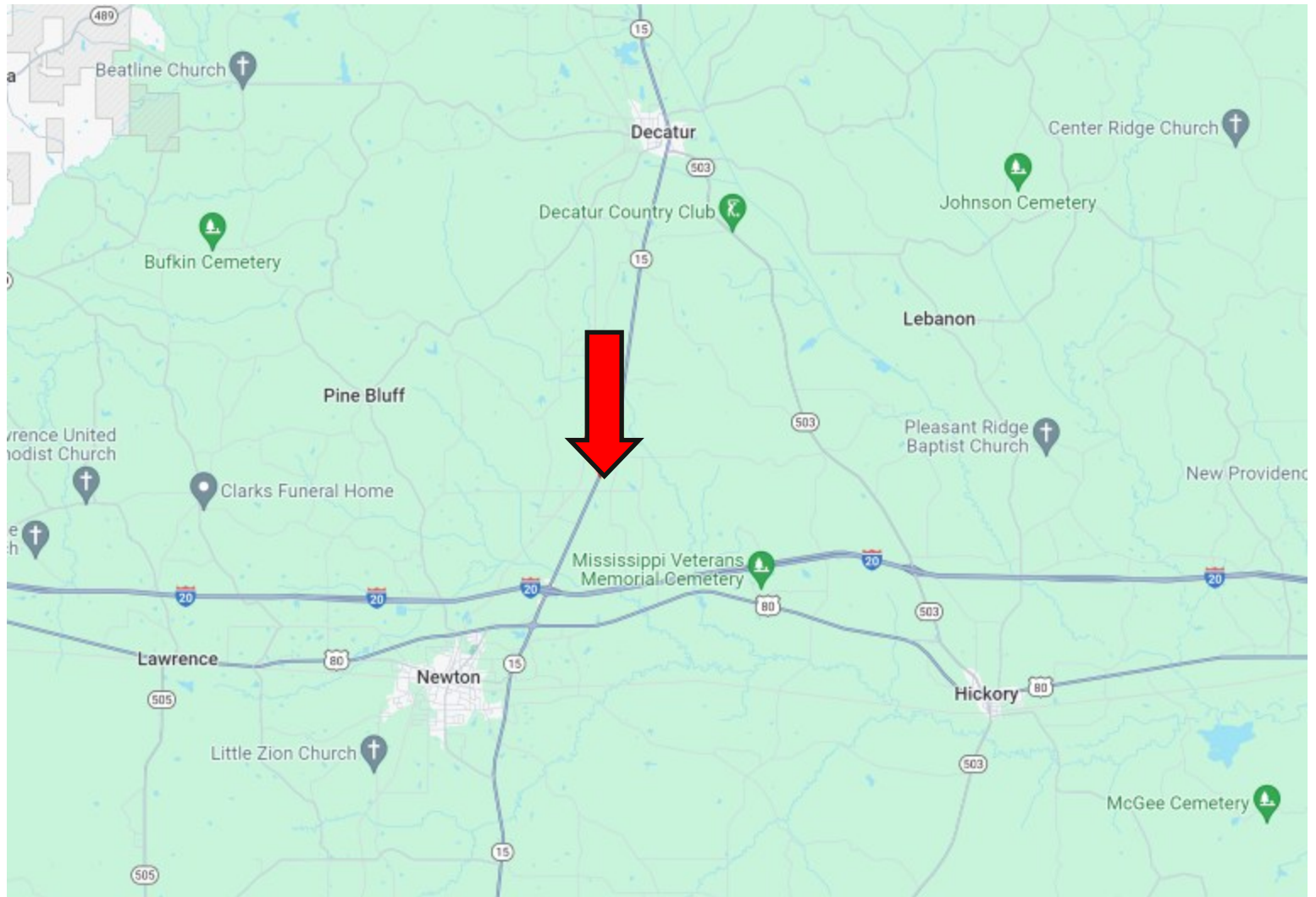


Expect More. Get More.



Information is believed to be accurate but not guaranteed.

Directional Map



Directions from the intersection of I-20 and MS-15 in Newton, MS: Take exit 109 Towards MS-15. Travel north on MS-15 for 1.9 miles. The property will be on the right. [GOOGLE MAP LINK](#)



**CHAD
WILSON**

REALTOR®

Office: 601.898.2772

Cell: 601.750.1970

Chad@TomSmithLand.com



Expect More. Get More.

A Real Estate Expert You Can Trust

TomSmithLandandHomes.com

Information is believed to be accurate but not guaranteed.

