

# EXCELLENT 11.7± ACRE RESIDENTIAL TRACT Newton County, MS



This 11.7± acre residential tract is in Newton County and has road frontage on Highway 15 and Salem Church Rd. The property features mature pine and hardwood timber and a beautiful seasonal creek. The property offers multiple commercial and residential development opportunities, with several prime homesites. Utilities are available nearby as this property is near other residential properties. The property is located near I-20 between Meridian and Jackson, MS. Directions from the intersection of I-20 and MS-15 in Newton, MS: Take exit 109 Towards MS-15. Travel north on MS-15 for 1.9 miles. The property will be on the right. [GOOGLE MAP LINK](#)



**CHAD  
WILSON**  
REALTOR®

Office: 601.898.2772  
Cell: 601.750.1970  
Chad@TomSmithLand.com



**A Real Estate Expert You Can Trust**

TomSmithLandandHomes.com

Information is believed to be accurate but not guaranteed.





**CHAD WILSON**

REALTOR®

Office: 601.898.2772

Cell: 601.750.1970

Chad@TomSmithLand.com



**A Real Estate Expert You Can Trust**

TomSmithLandandHomes.com

Information is believed to be accurate but not guaranteed.





**CHAD WILSON**

REALTOR®

Office: 601.898.2772

Cell: 601.750.1970

Chad@TomSmithLand.com



**A Real Estate Expert You Can Trust**

TomSmithLandandHomes.com

Information is believed to be accurate but not guaranteed.



# Aerial Map



**CHAD WILSON**

REALTOR®

Office: 601.898.2772

Cell: 601.750.1970

Chad@TomSmithLand.com



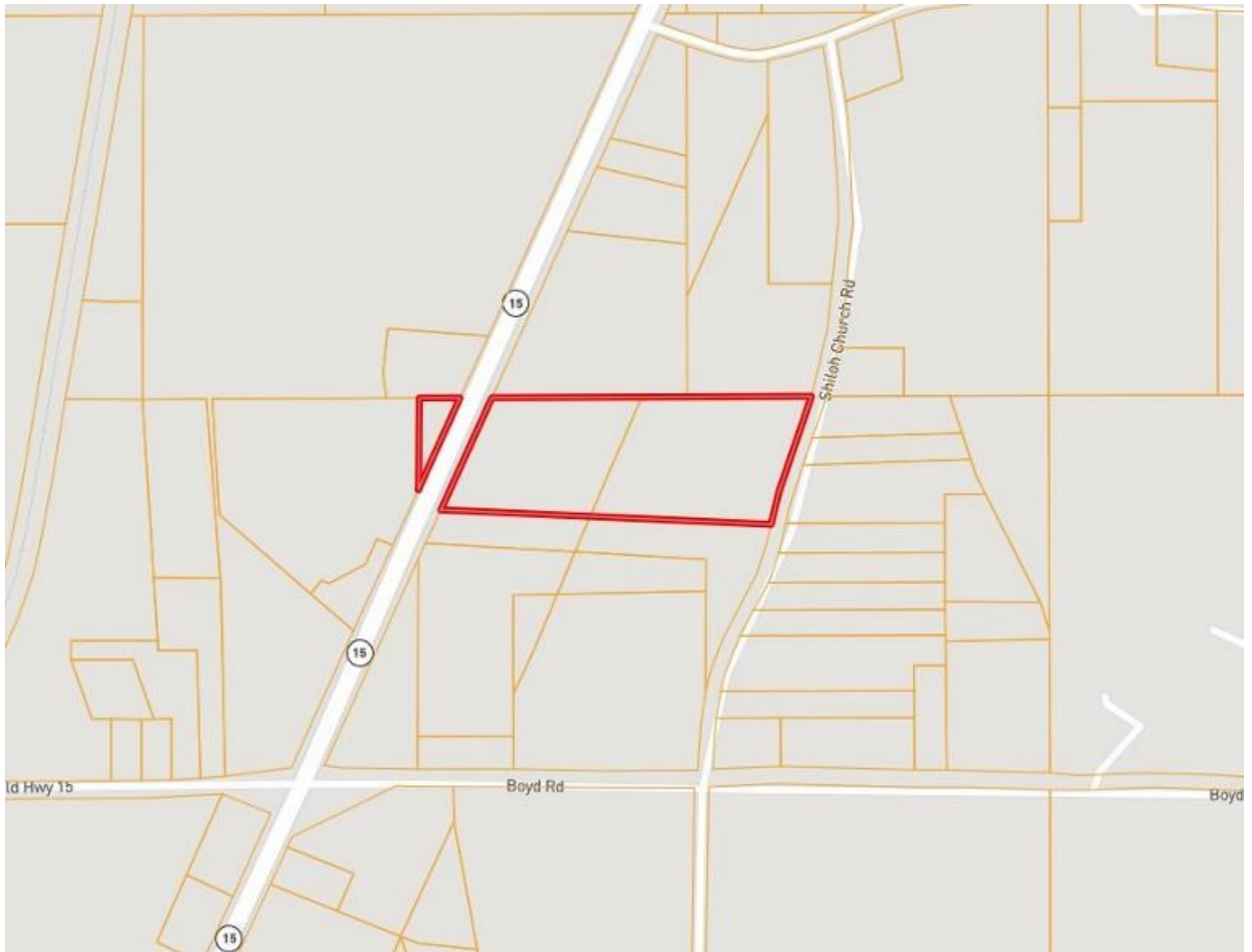
A Real Estate Expert You Can Trust

TomSmithLandandHomes.com

Information is believed to be accurate but not guaranteed.



# Ownership Map



**CHAD WILSON**

REALTOR®

Office: 601.898.2772

Cell: 601.750.1970

Chad@TomSmithLand.com



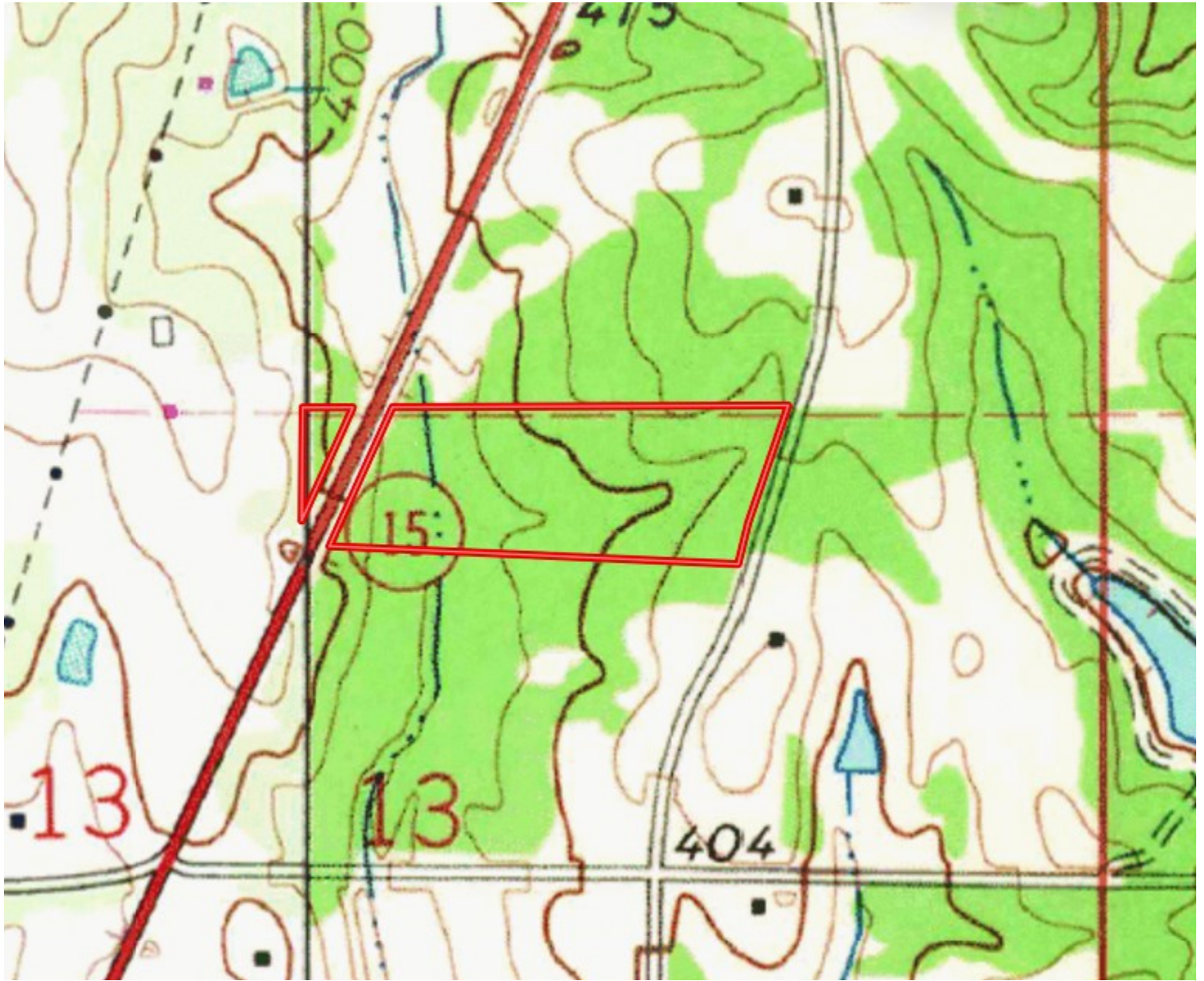
**A Real Estate Expert You Can Trust**

TomSmithLandandHomes.com

Information is believed to be accurate but not guaranteed.



# Topography Map



**CHAD WILSON**

REALTOR®

Office: 601.898.2772

Cell: 601.750.1970

Chad@TomSmithLand.com



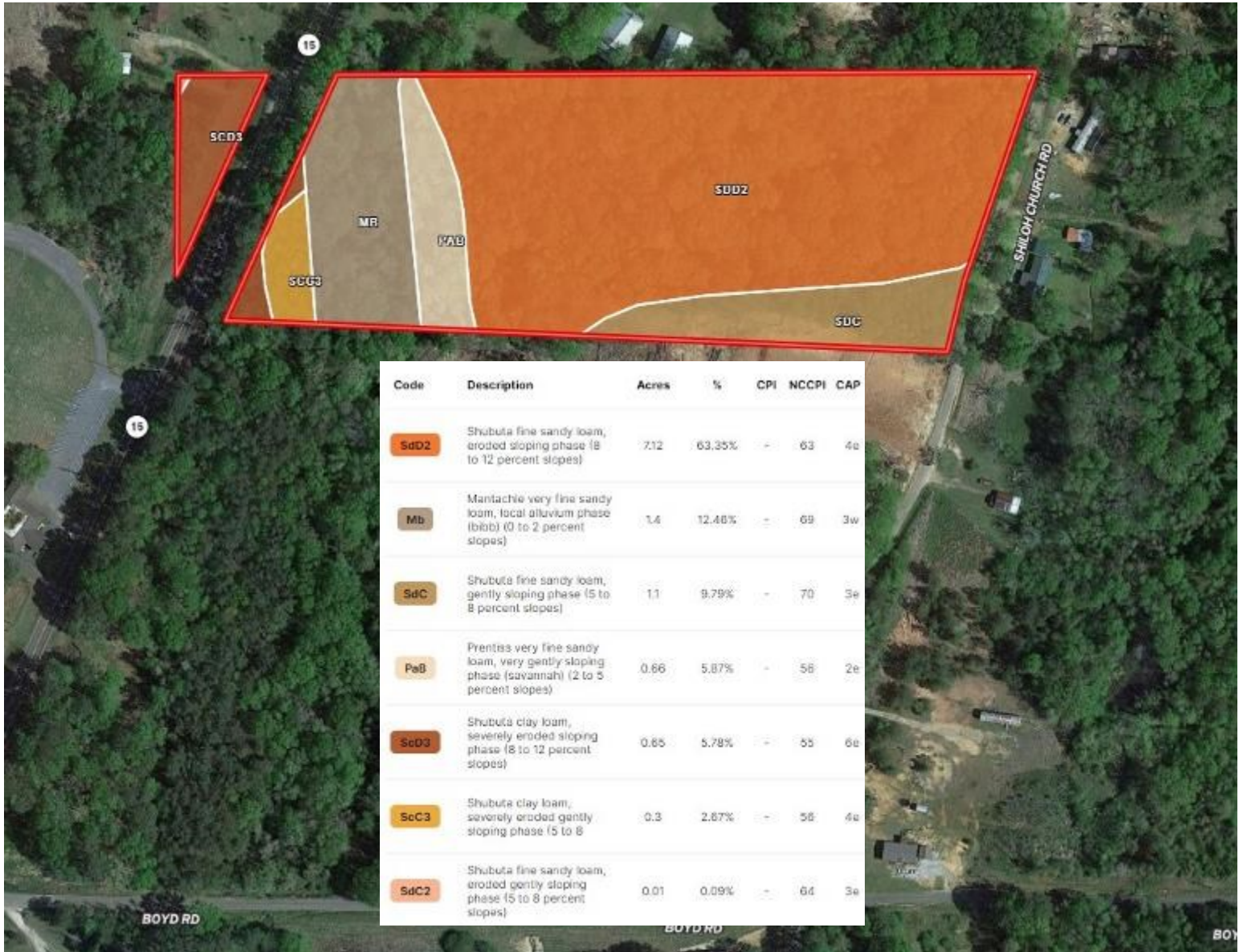
**A Real Estate Expert You Can Trust**

TomSmithLandandHomes.com

Information is believed to be accurate but not guaranteed.



# Soil Map



**CHAD WILSON**

REALTOR®

Office: 601.898.2772

Cell: 601.750.1970

Chad@TomSmithLand.com



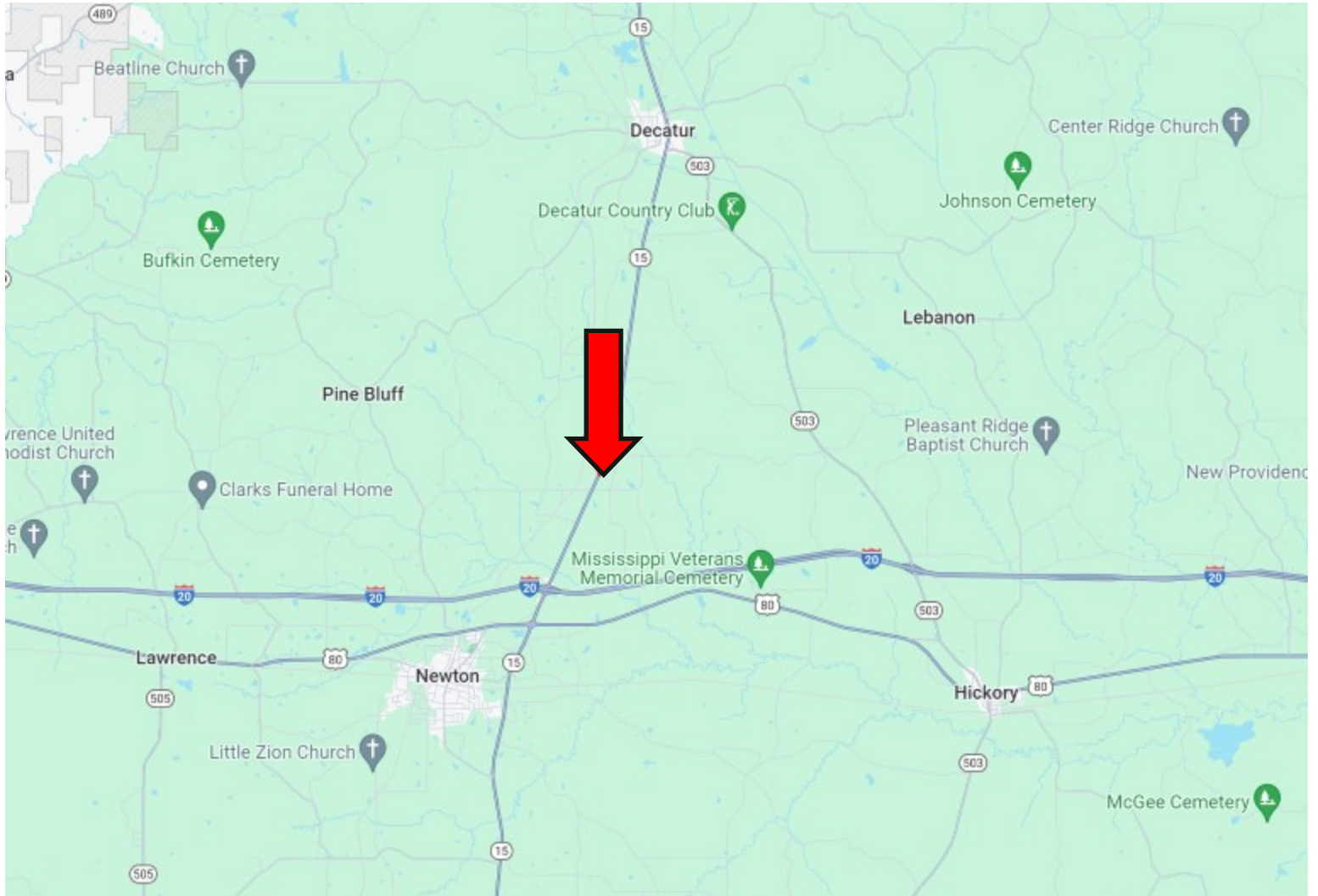
**A Real Estate Expert You Can Trust**

TomSmithLandandHomes.com

Information is believed to be accurate but not guaranteed.



# Directional Map



**Directions from the intersection of I-20 and MS-15 in Newton, MS: Take exit 109 Towards MS-15. Travel north on MS-15 for 1.9 miles. The property will be on the right. [GOOGLE MAP LINK](#)**



**CHAD  
WILSON**  
REALTOR®

Office: 601.898.2772  
Cell: 601.750.1970  
Chad@TomSmithLand.com



**A Real Estate Expert You Can Trust**

TomSmithLandandHomes.com

Information is believed to be accurate but not guaranteed.

