

BEAUTIFUL DOUBLE LOT ON EDEN ISLE CANAL in St. Tammany Parish, LA



\$299,000



Check out these two adjacent waterfront lots, making it 1.35± acres in total, in St. Tammany parish and the Eden Isles in Slidell, LA. This beautiful property on Eden Isles Canal offers multiple options to build a single-family home, camp, or multi-unit. Eden Isles is a deep-water canal that offers easy access to the world-class fishing of Lake Pontchartrain and Lake Borgne. The property is located on Northshore Circle, a short drive across the causeway to New Orleans, LA, with great dining, shopping, and entertainment.

Directions from the intersection of US-190 and US-11 in Slidell, LA: Travel south on US-11 for 5.6 miles. Turn left onto Northshore Circle. After .1 miles, the property will be on the left.



**CLIF
CANNON**
REALTOR®

Office: 601.990.5070

Cell: 601.565.1070

Clif@TomSmithLand.com



A Real Estate Expert You Can Trust

TomSmithLandandHomes.com

Information is believed to be accurate but not guaranteed.





Aerial Map



CLIF CANNON
REALTOR®

Office: 601.990.5070

Cell: 601.565.1070

Clif@TomSmithLand.com



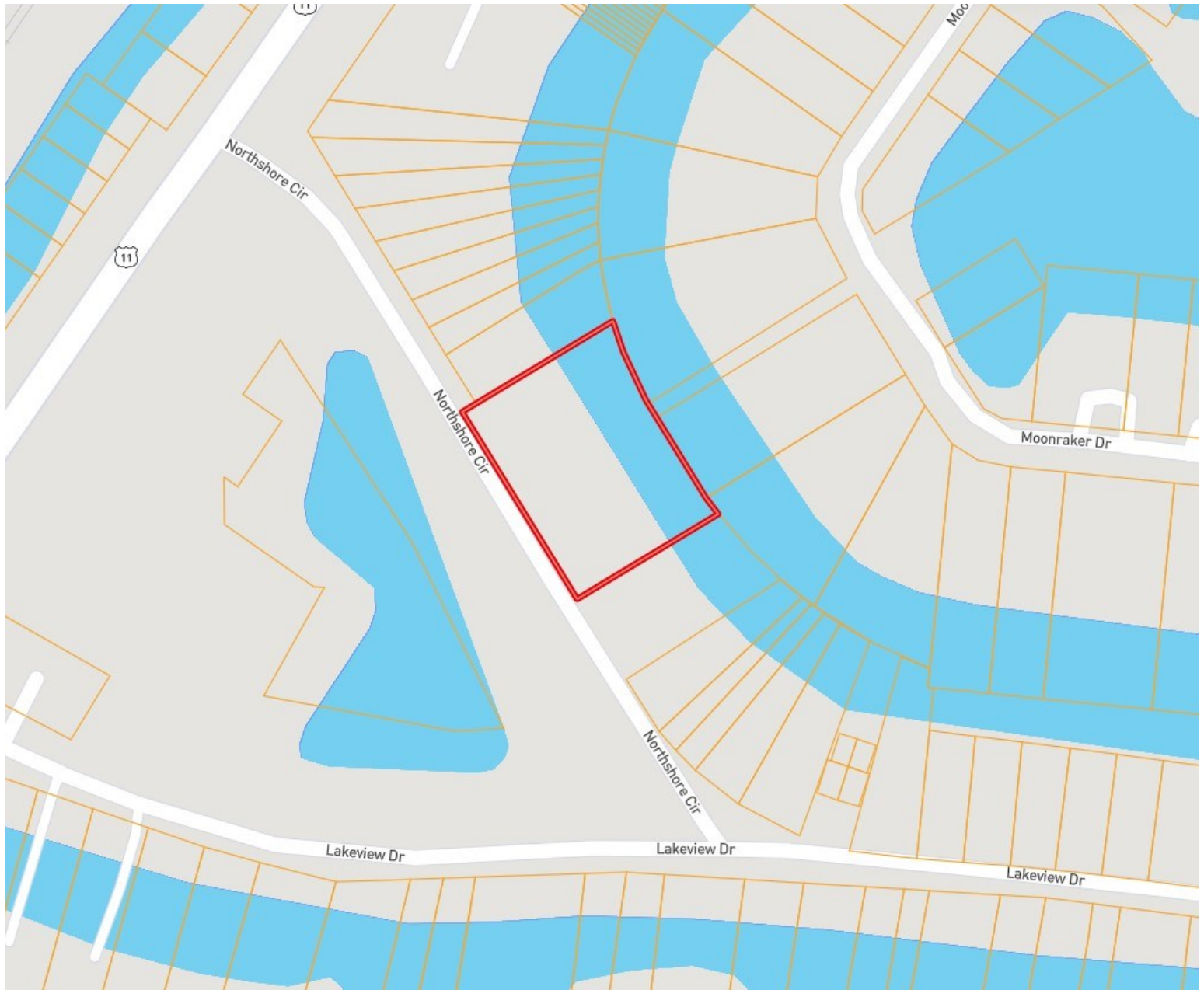
A Real Estate Expert You Can Trust

TomSmithLandandHomes.com

Information is believed to be accurate but not guaranteed.



Ownership Map



CLIF CANNON
REALTOR®

Office: 601.990.5070

Cell: 601.565.1070

Clif@TomSmithLand.com



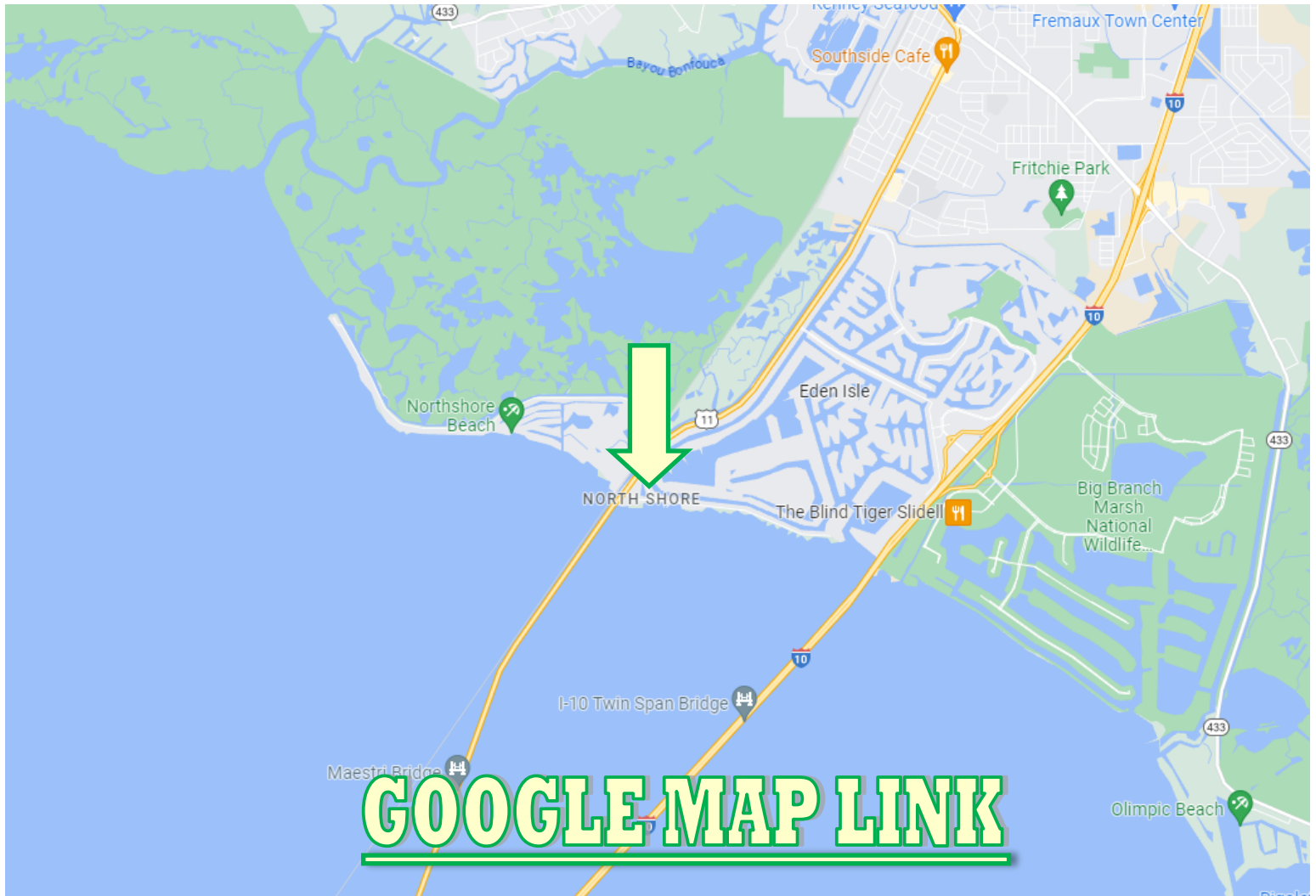
A Real Estate Expert You Can Trust

TomSmithLandandHomes.com

Information is believed to be accurate but not guaranteed.



Directional Map



Directions from the intersection of US-190 and US-11 in Slidell, LA: Travel south on US-11 for 5.6 miles. Turn left onto Northshore Circle. After .1 miles, the property will be on the left.

CLIF CANNON
REALTOR®

Office: 601.990.5070

Cell: 601.565.1070

Clif@TomSmithLand.com



A Real Estate Expert You Can Trust

TomSmithLandandHomes.com

Information is believed to be accurate but not guaranteed.

