

# Adorable Cleveland Cottage

## Bolivar County, MS



605 S. Fifth Ave. Cleveland, MS 38732

\$178,000

Adorable cottage in the heart of Cleveland, Bolivar County, MS. This three bedroom, two bath home is within walking distance to Delta State and close to all downtown Cleveland offers. The moment you walk into this home, you are greeted with Southern charm like you've never seen. The newly updated kitchen and screened porch are perfect for entertaining, and the beautifully maintained backyard. Call Tracey or Sarah Reese today for your private showing!

**Directions from Hwy 8 & Hwy 61 in Cleveland, MS:** Travel West on Hwy 8 for approximately 1.0 miles. Turn left onto N. Fifth Ave. After 0.7 miles, the home will be on the left. [Click for Google Maps](#)



SARAH REESE  
**WRIGHT**

REALTOR®

Office: 662.441.2500

Cell: 662.641.6696

SarahReese@TomSmithLand.com



Expect More. Get More.

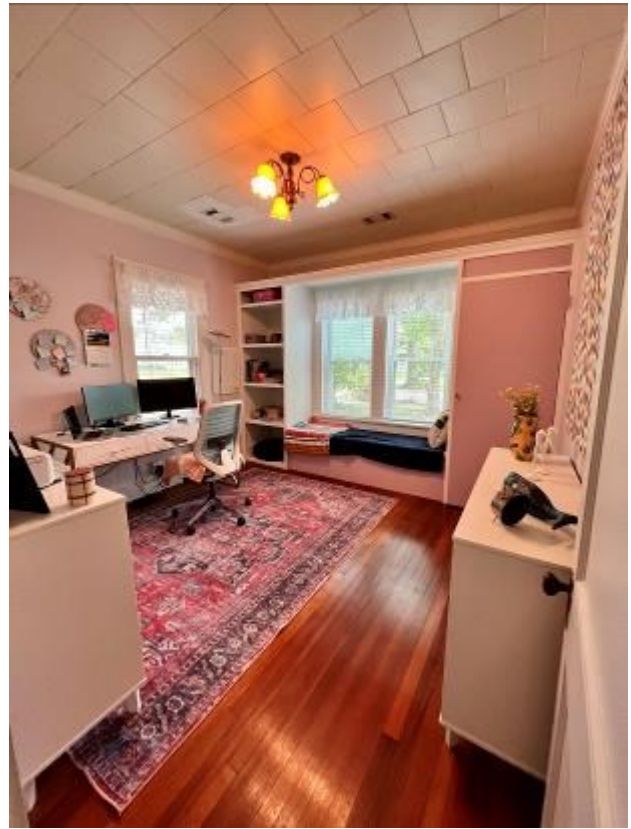
A Real Estate Expert You Can Trust

TomSmithLandandHomes.com

Information is believed to be accurate but not guaranteed.







# A Real Estate Expert *You Can Trust!*

SARAH REESE  
**WRIGHT**

REALTOR®

O: 662.441.2500 C: 662.641.6696

SarahReese@TomSmithLand.com

TomSmithLandandHomes.com



Expect More. Get More.



Information is believed to be accurate but not guaranteed.





## A Real Estate Expert *You Can Trust!*

SARAH REESE  
**WRIGHT**  
REALTOR®

O: 662.441.2500 C: 662.641.6696

[SarahReese@TomSmithLand.com](mailto:SarahReese@TomSmithLand.com)

[TomSmithLandandHomes.com](http://TomSmithLandandHomes.com)



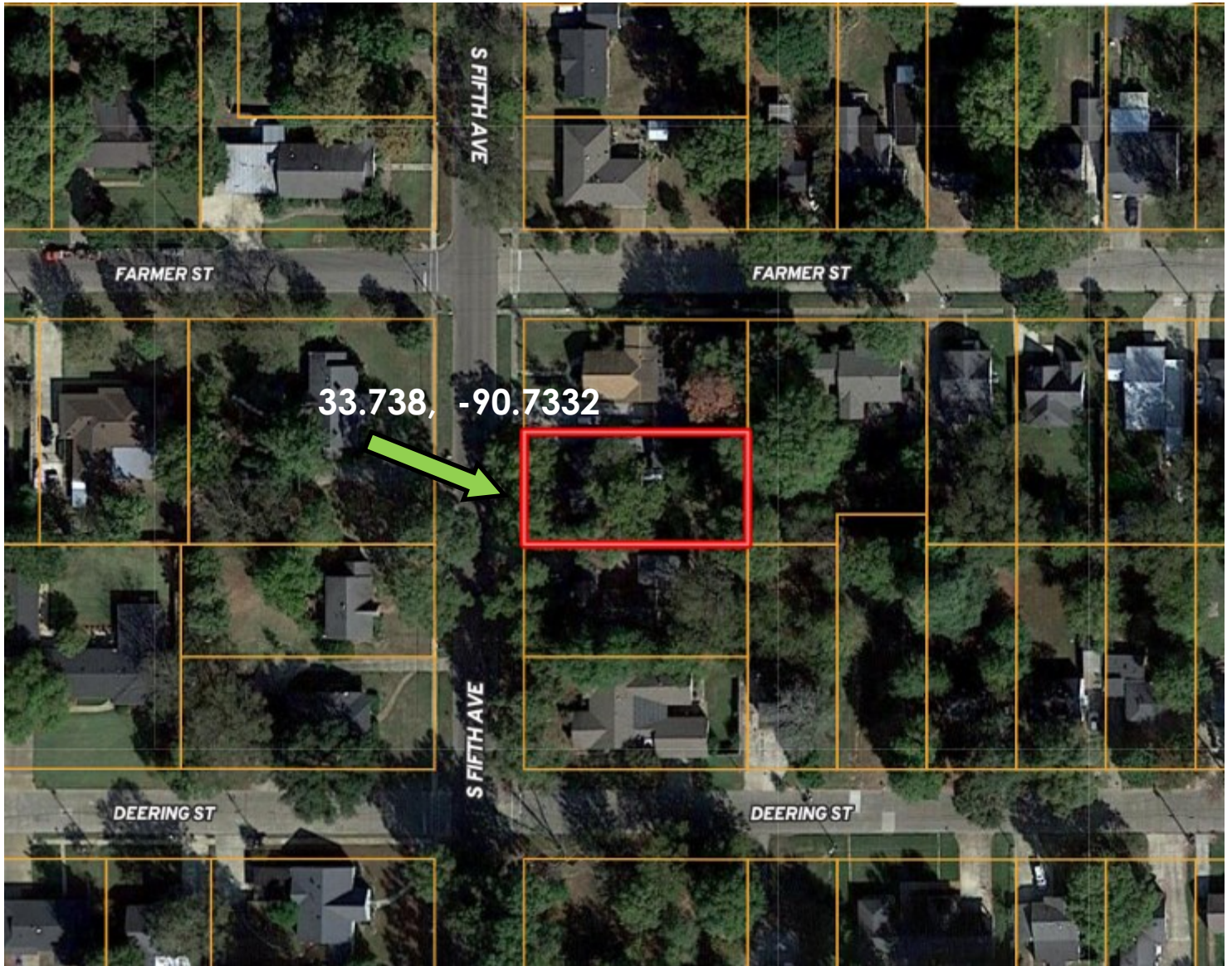
Expect More. Get More.



Information is believed to be accurate but not guaranteed.



# AERIAL MAP



[Click for Interactive Map](#)

**A Real Estate Expert**  
*You Can Trust!*

**SARAH REESE**  
**WRIGHT**

REALTOR®

O: 662.441.2500 C: 662.641.6696

SarahReese@TomSmithLand.com

TomSmithLandandHomes.com

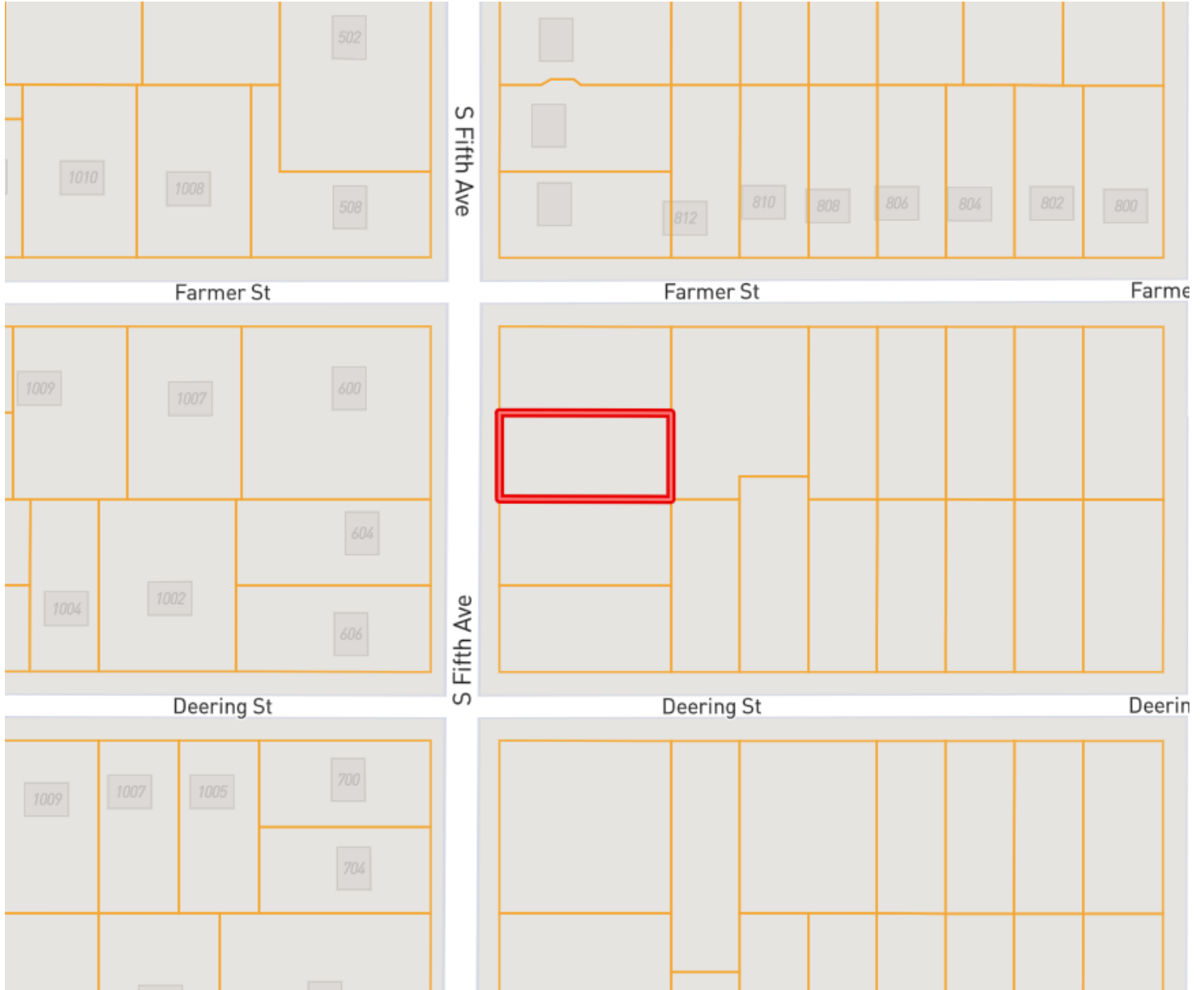


Expect More. Get More.

Information is believed to be accurate but not guaranteed.



# OWNERSHIP MAP



**A Real Estate Expert**  
*You Can Trust!*

**SARAH REESE**  
**WRIGHT**

REALTOR®

O: 662.441.2500 C: 662.641.6696

SarahReese@TomSmithLand.com

TomSmithLandandHomes.com



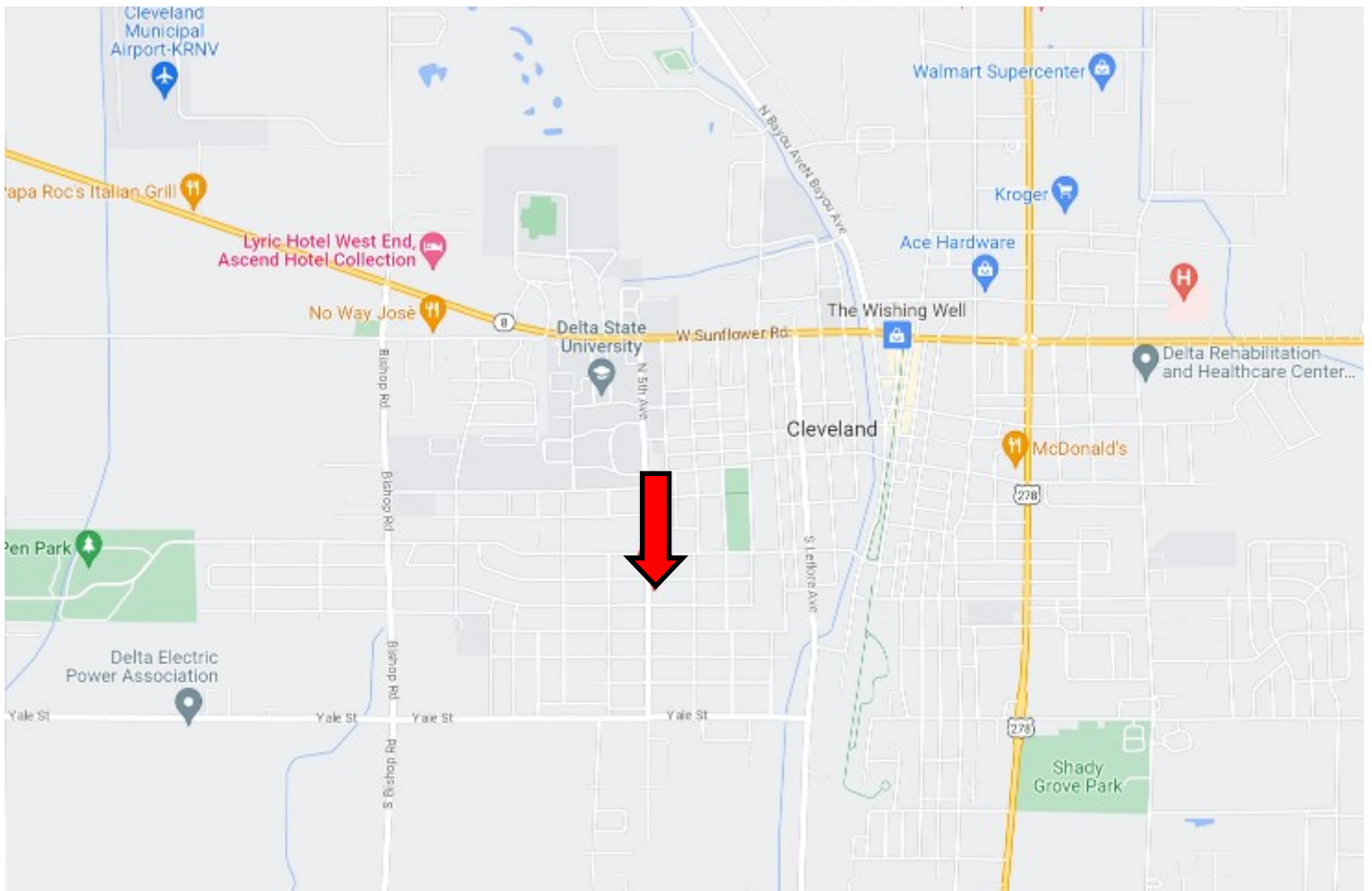
Expect More. Get More.

Information is believed to be accurate but not guaranteed.





# DIRECTIONAL MAP



**Address: 605 S. Fifth Ave. Cleveland, MS 38732**

**Directions from Hwy 8 & Hwy 61 in Cleveland, MS:** Travel West on Hwy 8 for approximately 1.0 miles. Turn left onto N. Fifth Ave. After 0.7 miles, the home will be on the left.

**[Click for Google Maps](#)**



**SARAH REESE  
WRIGHT**

REALTOR®

Office: 662.441.2500

Cell: 662.641.6696

[SarahReese@TomSmithLand.com](mailto:SarahReese@TomSmithLand.com)



Expect More. Get More.

**A Real Estate Expert You Can Trust**

[TomSmithLandandHomes.com](http://TomSmithLandandHomes.com)

Information is believed to be accurate but not guaranteed.

