

16± ACRES OF QUIET COUNTRY PARADISE in Jefferson County, MS



\$62,400



Check out this excellent small hunting tract in Jefferson County, Lorman, MS. This 16± acre property is tucked away in a quiet country setting deep in Jefferson County, MS. The property is loaded with hardwood timber and has great frontage on a live creek. With its location and the large hardwood timber, this tract makes for a perfect spot to set up to hunt this upcoming season, or turn this place into a quaint country retreat. Call Clif Cannon for a private showing today!

Directions from the intersection of US-61 and Rodney Rd in Fayette, MS: Travel north on US-61 for 10.6 miles. Turn right onto Patton Road. In .3 miles turn right onto unmarked road, follow the road past the abandoned house. The road leads to the entrance of the property.



**CLIF
CANNON**
REALTOR®

Office: 601.990.5070

Cell: 601.565.1070

Clif@TomSmithLand.com

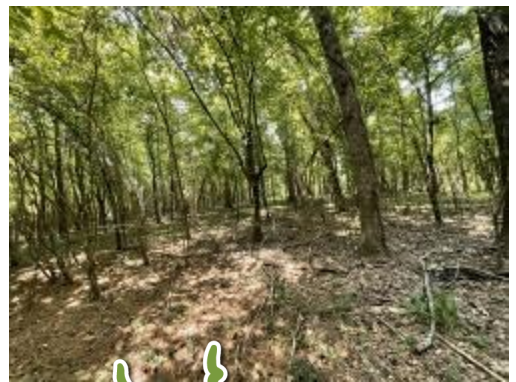


A Real Estate Expert You Can Trust

TomSmithLandandHomes.com

Information is believed to be accurate but not guaranteed.





CLIF CANNON

REALTOR®

Office: 601.990.5070

Cell: 601.565.1070

Clif@TomSmithLand.com



A Real Estate Expert You Can Trust

TomSmithLandandHomes.com

Information is believed to be accurate but not guaranteed.





CLIF CANNON

REALTOR®

Office: 601.990.5070

Cell: 601.565.1070

Clif@TomSmithLand.com



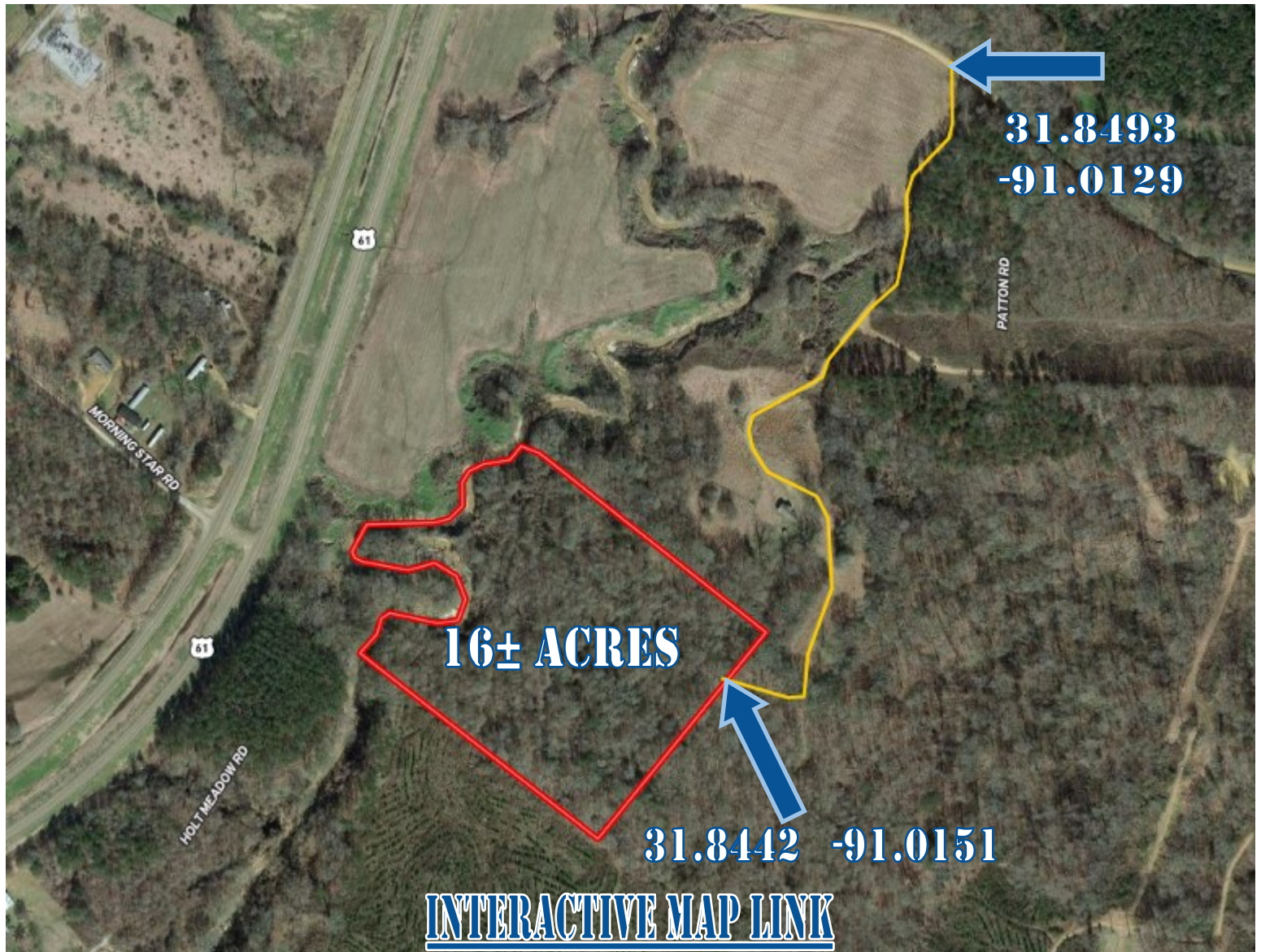
A Real Estate Expert You Can Trust

TomSmithLandandHomes.com

Information is believed to be accurate but not guaranteed.



Aerial Map



CLIF CANNON

REALTOR®

Office: 601.990.5070

Cell: 601.565.1070

Clif@TomSmithLand.com



A Real Estate Expert You Can Trust

TomSmithLandandHomes.com

Information is believed to be accurate but not guaranteed.



Ownership Map



CLIF CANNON

REALTOR®

Office: 601.990.5070

Cell: 601.565.1070

Clif@TomSmithLand.com



A Real Estate Expert You Can Trust

TomSmithLandandHomes.com

Information is believed to be accurate but not guaranteed.



Topography Map



CLIF CANNON

REALTOR®

Office: 601.990.5070

Cell: 601.565.1070

Clif@TomSmithLand.com



A Real Estate Expert You Can Trust

TomSmithLandandHomes.com

Information is believed to be accurate but not guaranteed.



Flood Map



CLIF CANNON

REALTOR®

Office: 601.990.5070

Cell: 601.565.1070

Clif@TomSmithLand.com

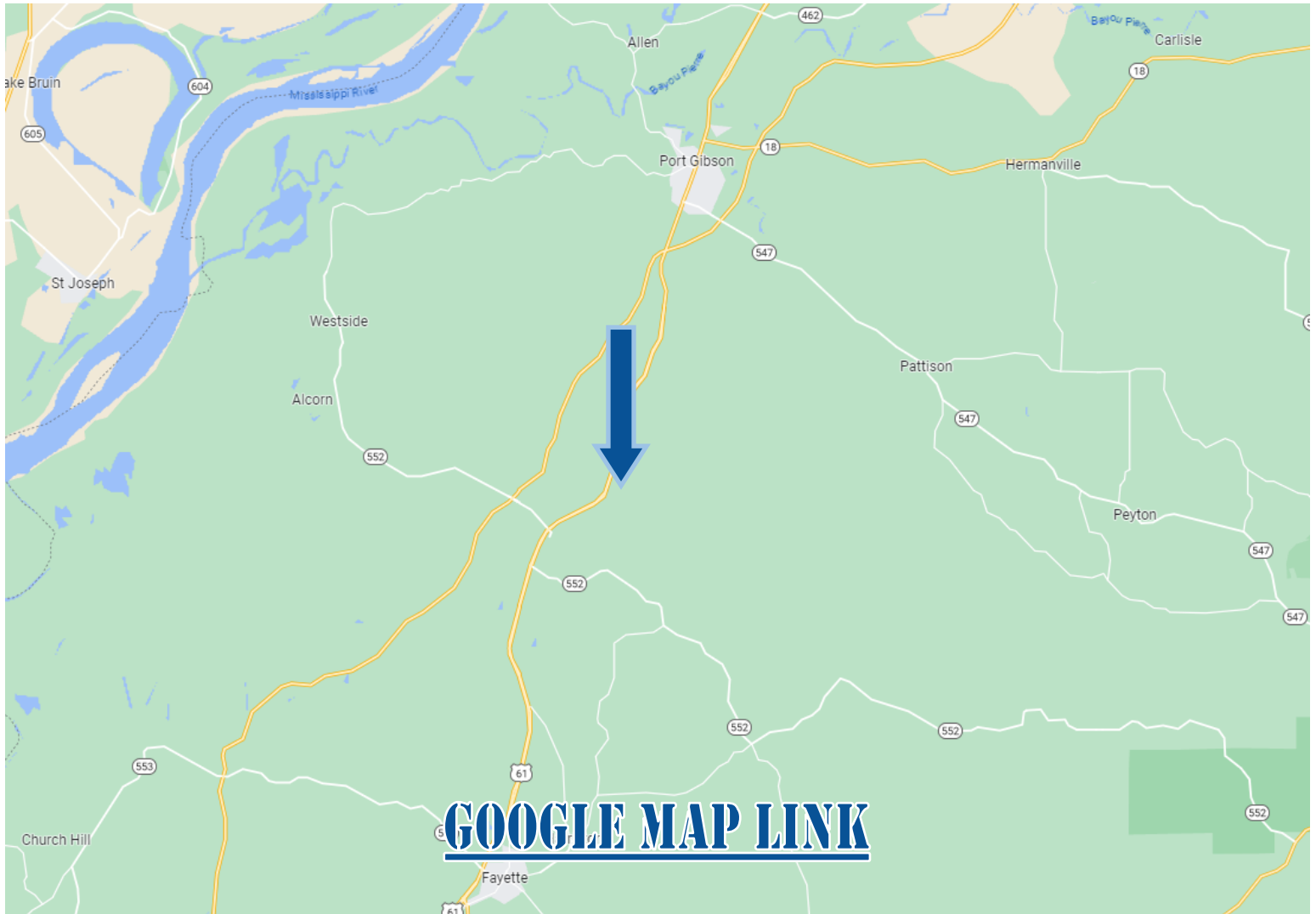


A Real Estate Expert You Can Trust
TomSmithLandandHomes.com

Information is believed to be accurate but not guaranteed.



Directional Map



Directions from the intersection of US-61 and Rodney Rd in Fayette, MS: Travel north on US-61 for 10.6 miles. Turn right onto Patton Road. In .3 miles turn right onto unmarked road, follow the road past the abandoned house. The

CLIF CANNON

REALTOR®

Office: 601.990.5070

Cell: 601.565.1070

Clif@TomSmithLand.com



A Real Estate Expert You Can Trust

TomSmithLandandHomes.com

Information is believed to be accurate but not guaranteed.

