



For Sale - \$625,000

5645 NC 751 Highway, Apex

Lot Size: 3.584 Acres

This unrestricted lot combination (3.374 plus .210 acres) has a historic barn, well and septic (conventional), and backs up to Army Corp or Engineers land (US lands - Jordan Lake). This is a level lot with paved public road frontage and the driveway is already installed. No HOA, no covenants, no required builder or time limit to build. Additional lot adjoining to the north for sale at time of list. Possible subdivide.

Make the first step to better living - Call for an appointment today!



Eric Andrews Broker
919-548-1014 (Cell)
919-542-0523 (Office)
eric@ericandrewsrealtor.com
www.ericandrewsrealtor.com



Realty World Carolina Properties
73 Hillsboro St.
PO Box 1400, Pittsboro, North Carolina 27312



REALTY WORLD, INC.® is a real estate franchise company. Each REALTY WORLD office is owned and operated independently.
©2022 MoxiWorks. Pub 3/22



1/2" IRON PIPE	FLUSH
1/2" IRON PIPE	FLUSH
1/2" IRON PIPE	FLUSH
1/2" IRON PIPE	4" ABOVE GROUND
1/2" REBAR	FLUSH
14 - 17 ARE COMPUTED POINTS ONLY	
1/2" IRON PIPE	4" ABOVE GROUND
1/2" IRON PIPE	FLUSH
1/2" IRON PIPE	FLUSH
CONCRETE R/W MONUMENT	4" ABOVE GROUND
CONCRETE R/W MONUMENT	8" ABOVE GROUND
1/2" IRON PIPE	BURIED 1" DEEP
CONCRETE R/W MONUMENT	8" ABOVE GROUND
1/2" IRON PIPE	BURIED 2" DEEP
CONCRETE R/W MONUMENT	6" ABOVE GROUND
CONCRETE R/W MONUMENT	4" ABOVE GROUND
CONCRETE R/W MONUMENT	6" ABOVE GROUND
CONCRETE R/W MONUMENT	BURIED

LINE	BEARING	DISTANCE
2 - 3	S 13°03'05" W	21.14'
3 - 4	N 74°51'45" W	43.28'
4 - 5	S 13°08'32" W	314.63'
5 - 6	N 84°55'09" W	10.07'
6 - 7	N 13°08'32" E	144.60'
7 - 8	N 13°08'32" E	172.04'
8 - 9	N 29°24'16" E	188.74'
9 - 11	S 84°01'51" W	3.04'
11 - 12	S 77°49'51" W	150.00'
12 - 13	N 84°55'09" W	116.04'
13 - 15	S 84°01'51" W	40.31'
15 - 17	N 84°55'09" W	74.45'
17 - 18	N 84°55'09" W	40.44'
18 - 19	N 13°49'54" E	232.03'
19 - 20	S 14°04'28" W	49.73'
20 - 21	S 77°40'40" E	59.82'(lie)
21 - 23	S 76°47'37" E	45.07'(lie)
23 - 24	N 89°17'48" E	36.98'(lie)
24 - 25	N 89°07'47" E	52.81'(lie)
25 - 26	N 84°43'43" E	105.03'(lie)
26 - 28	S 69°01'51" W	26.26'(lie)
28 - 29	S 84°55'09" W	16.21'(lie)
29 - 31	S 84°55'09" W	25.48'(lie)
31 - 32	S 69°50'16" E	149.92'(lie)
32 - 33	S 76°17'32" E	

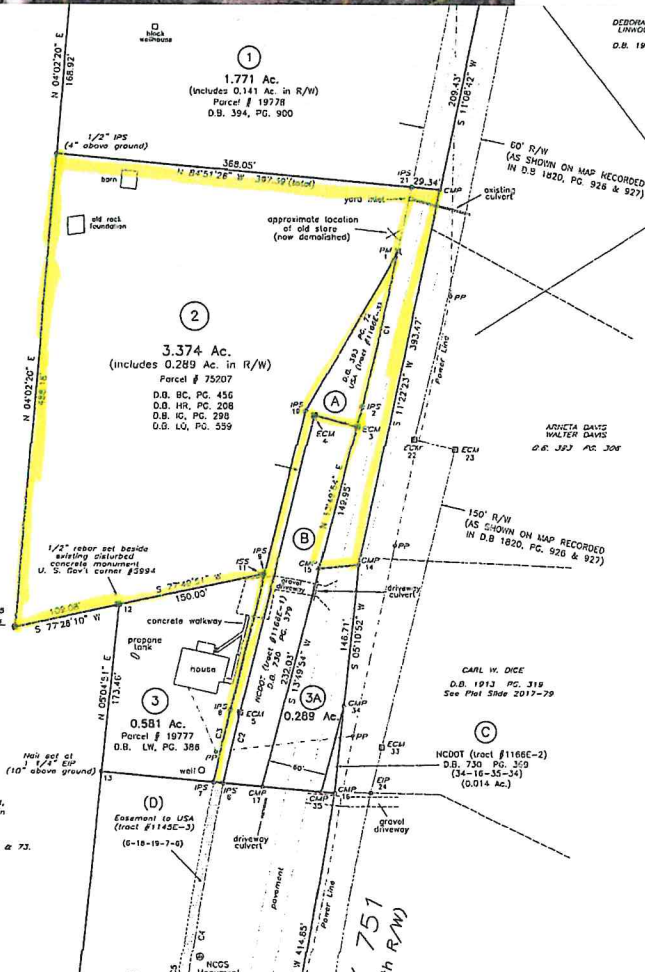
UNITED STATES OF AMERICA
D.B. 394 PG. 767
TRACT #1145

Existing Concrete Monument
U. S. Gov't corner #5999
N.C. Plat #200120
NAD 83 (2011)
N 76°17'32" W
= 200981.28'

FEED Jan 05, 2021 1:20:48 pm
PLAT SLIDE 0001 - 0003
INSTRUMENT 00163

Let J and let JA are noncontiguous parts of an existing lot, as recorded in D.B. 116, PG. 385. These lots are what remain after deeds were granted to NCDOT and USA.

1/4 A was conveyed in fee simple to USA in D.B. 393, PG. 72 & 73. Is B and C were conveyed in fee simple to USA in D.B. 393, PG. 72 & 73 and subsequently conveyed to NCDOT D.B. 730, PG. 379



DEBORAH MANN LOTTION
LAWYER E. LOTTION
D.B. 1941 PG. 1053

See Perpetual Easement for N. C. as described in D.B. 1820, PG. 912

TRACT A (0.210 Ac.)
(1-2-3-4-5-6-7-8-9-10-11)
(CONVEYED TO USA IN D.B. 393, PG. 72)

LINE	BEARING	DISTANCE
1 - 2	S 12°16'45" W	163.66'(Ch)
2 - 3	S 13°03'05" W	21.14'
3 - 4	S 74°51'45" W	43.28'
4 - 5	S 13°08'32" W	314.69'
5 - 6	S 12°35'36" W	74.53'(Ch)
6 - 7	N 84°55'09" W	10.07'
7 - 8	N 13°49'54" E	76.00'(Ch)
8 - 9	N 13°08'32" E	144.60'
9 - 10	N 13°08'32" E	172.04'
10 - 11	N 29°24'16" E	188.74'

TRACT B (0.381 Ac.)
(3-15-17-6-5-4-3)
(CONVEYED TO NCDOT IN D.B. 730, PG. 379)

LINE	BEARING	DISTANCE
3 - 15	S 13°49'54" W	149.95'
15 - 17	S 13°49'54" W	232.03'
17 - 6	N 84°55'09" W	40.44'
6 - 5	N 12°35'36" E	74.53'(Chor)
5 - 4	N 13°08'32" E	314.65'
4 - 3	S 74°51'45" E	43.28'

TRACT C (0.014 Ac.)
(16-35-14-15)
(CONVEYED TO NCDOT IN D.B. 730, PG. 379)

LINE	BEARING	DISTANCE
16 - 35	N 84°55'09" W	11.74'
35 - 14	N 13°49'54" E	91.38'
14 - 15	S 05°10'52" W	90.32'

EASEMENT D (0.085 Ac.)
(6-18-19-7-6)
(CONVEYED TO USA IN D.B. 394, PG. 762)

LINE	BEARING	DISTANCE
6 - 18	S 07°22'17" W	342.21'(Chor)
18 - 19	S 13°00'03" W	54.43'
19 - 7	N 05°41'18" E	398.00'(Chor)
7 - 6	S 84°55'09" E	10.07'

TRACT 3 (0.581 Ac.)
(12-11-9-8-7-13-12)

LINE	BEARING	DISTANCE
12 - 11	N 77°49'51" E	150.00'
11 - 9	N 84°04'51" E	3.04'
9 - 8	S 13°08'32" E	144.60'
8 - 7	S 12°34'44" W	76.00'(Chor)