

# COMMERCIAL OPPORTUNITY IN HINDS COUNTY, MS

## Westhaven Blvd. Jackson, MS 39209



Owner financing available!! This is an exceptional commercial opportunity on Westhaven Blvd in the city of Jackson, MS. This impressive 2+/- acre parcel presents a prime location for your commercial endeavors. With its desirable R3 zoning classification, this property offers versatility and numerous potential uses. It is located across the street from the Greater Bethlehem Temple Church. Call Allyson or Chad to schedule your viewing today!



**ALLYSON MIZE**  
REALTOR®

O: 601.898.2772 | C: 662.607.1704  
Allyson@TomSmithLand.com



**CHAD WILSON**  
REALTOR®

O: 601.898.2772 | C: 601.750.1970  
Chad@TomSmithLand.com

**TomSmithLandandHomes.com**

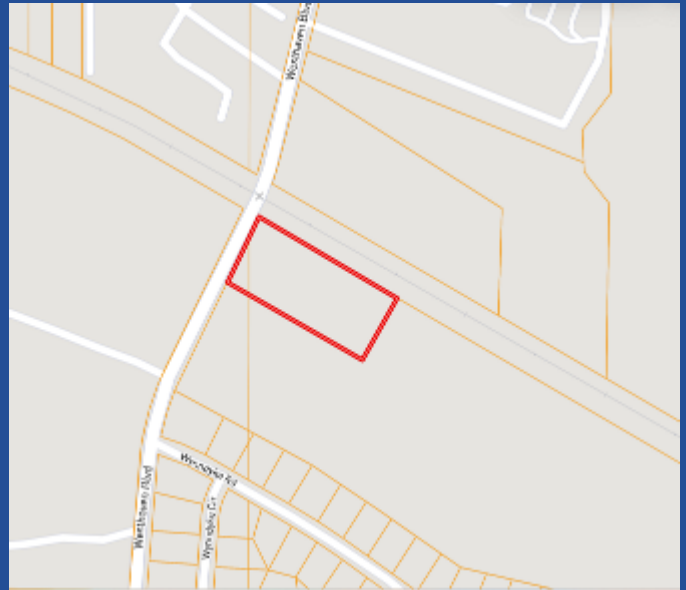
Information is believed to be accurate but not guaranteed.



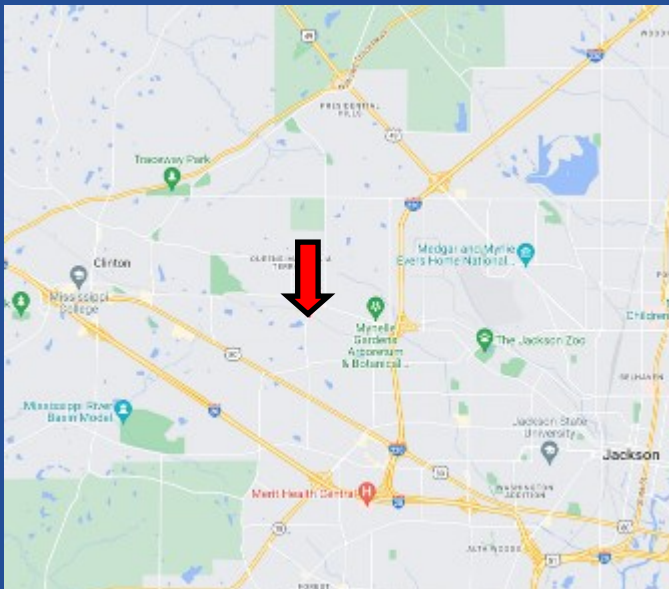




**AERIAL MAP**



**OWNERSHIP MAP**



**DIRECTIONAL MAP**

**Directions from the intersection of Westhaven Blvd and Clinton Blvd in Jackson, MS:** Turn onto Westhaven Blvd and travel .4 miles. The property will be on the left.

**GOOGLE MAP LINK**

**Interactive Map Link**



**ALLYSON MIZE**  
REALTOR®

O: 601.898.2772 | C: 662.607.1704  
Allyson@TomSmithLand.com



**Expect More. Get More.**



**CHAD WILSON**  
REALTOR®

O: 601.898.2772 | C: 601.750.1970  
Chad@TomSmithLand.com

**TomSmithLandandHomes.com**

Information is believed to be accurate but not guaranteed.

