

28.8+/- Acre Recreational Tract in Jefferson Davis County, MS



000 Hwy 43
Oak Vale, MS 39656

\$72,000

If you are looking for an excellent recreational tract, here it is! This 28+/- acre tract is south of Prentiss, MS in Jefferson Davis County. At first glance, looks can be deceiving, and this one is no different. Just off the road is a small thicket that deceives the average person. But once you get into the interior, you will be amazed at the beautiful meadow interspersed with mature hardwoods. You can envision the whitetail deer grazing acorns or a big tom turkey strutting with his hens. The powerline offers a convenient place for a food plot as well. Call Clif to schedule your private showing today! Additional acreage is available.

Directions from the intersection of US-84 and MS-13 in Prentiss, MS: Travel south on MS-13/MS-184 for 2.2 miles. Turn left at the stop sign to stay on MS-13 and travel for 11.1 miles. Turn right onto MS-43 and travel for 3 miles. The property will be on the right.

Google Maps



CLIF CANNON
REALTOR®

O: 601.990.5070 | C: 601.565.1070
Clif@TomSmithLand.com



TOM WISEMAN
ASSOCIATE BROKER

O: 662.268.6333 | C: 662.317.0467
TWiseman@TomSmithLand.com

TomSmithLandandHomes.com

Information is believed to be accurate but not guaranteed.





CLIF CANNON
REALTOR®

O: 601.990.5070 | C: 601.565.1070
Clif@TomSmithLand.com



TOM WISEMAN
ASSOCIATE BROKER

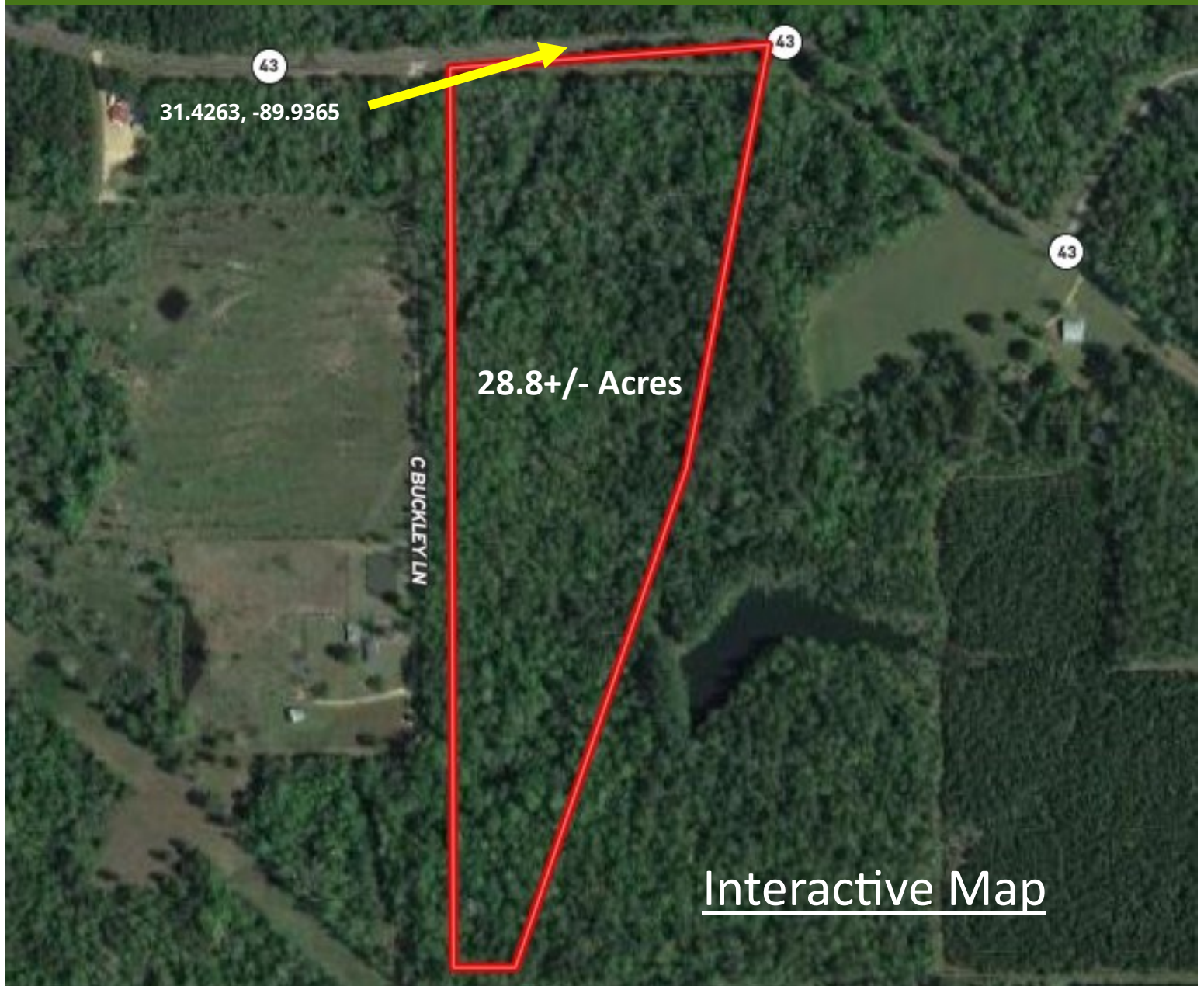
O: 662.268.6333 | C: 662.317.0467
TWiseman@TomSmithLand.com

TomSmithLandandHomes.com

Information is believed to be accurate but not guaranteed.



Aerial Map



CLIF CANNON
REALTOR®

O: 601.990.5070 | C: 601.565.1070
Clif@TomSmithLand.com



TOM WISEMAN
ASSOCIATE BROKER

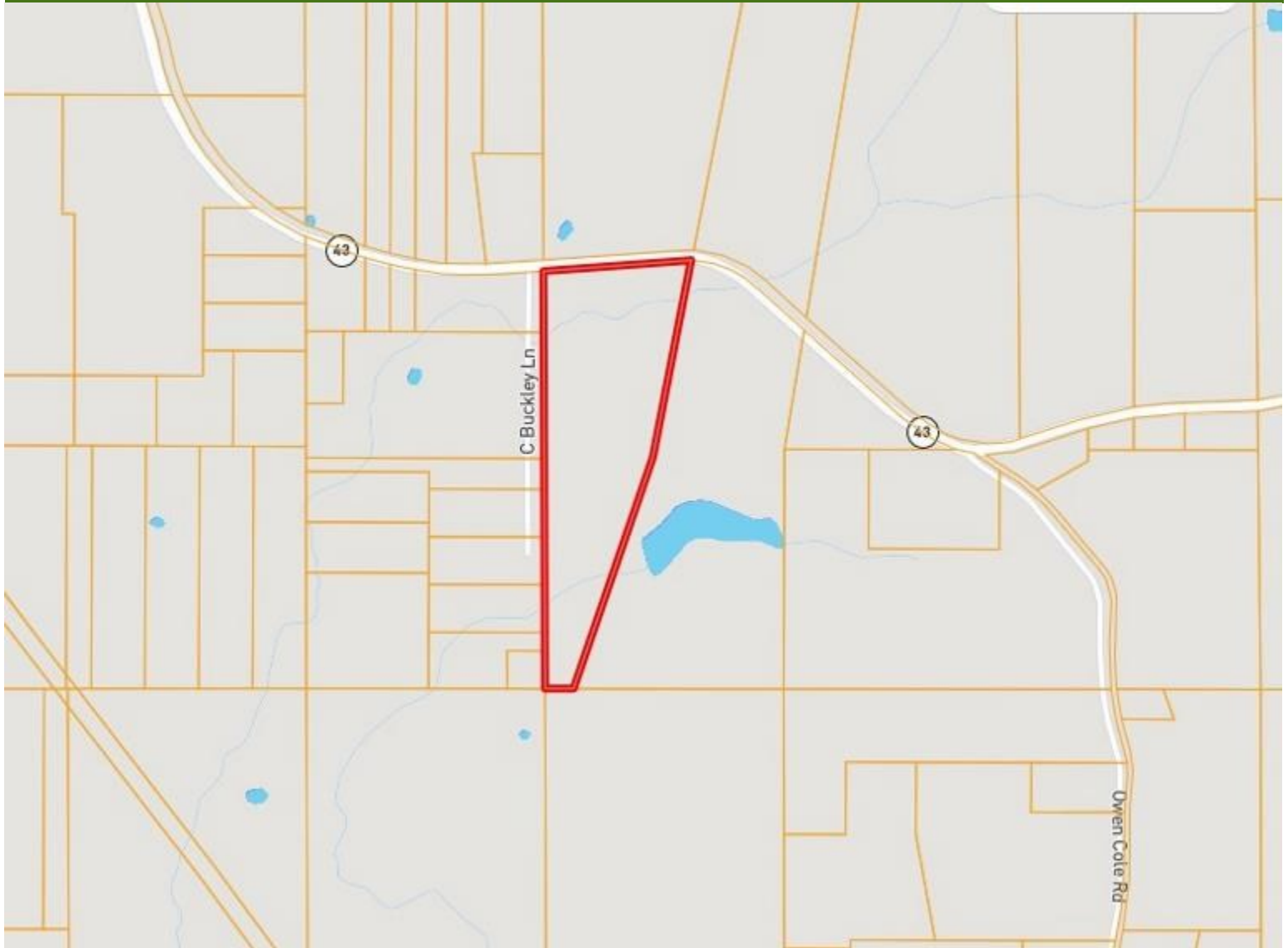
O: 662.268.6333 | C: 662.317.0467
TWiseman@TomSmithLand.com

TomSmithLandandHomes.com

Information is believed to be accurate but not guaranteed.



Ownership Map



CLIF CANNON
REALTOR®

O: 601.990.5070 | C: 601.565.1070
Clif@TomSmithLand.com



TOM WISEMAN
ASSOCIATE BROKER

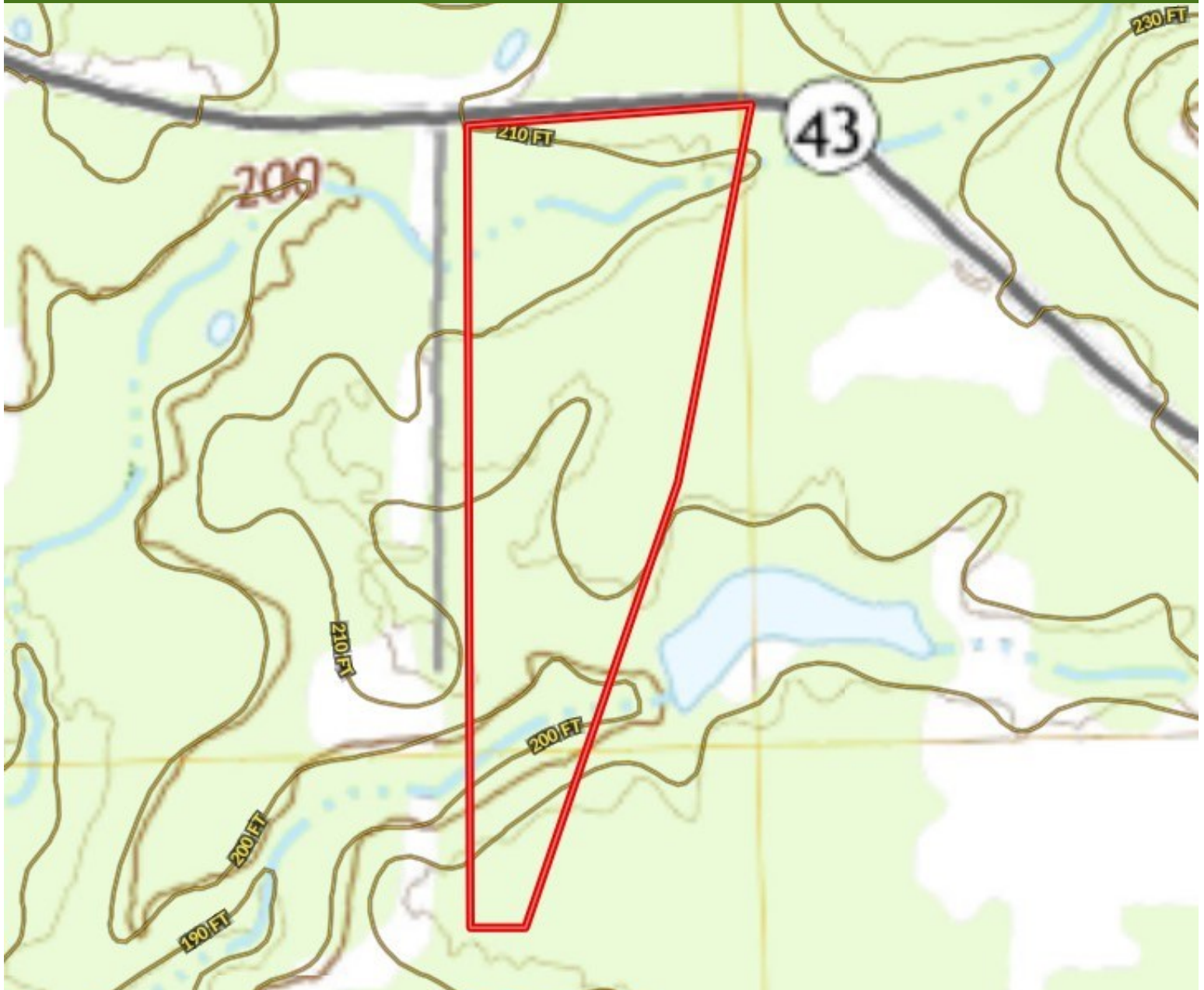
O: 662.268.6333 | C: 662.317.0467
TWiseman@TomSmithLand.com

TomSmithLandandHomes.com

Information is believed to be accurate but not guaranteed.



Topographic Map



CLIF CANNON
REALTOR®

O: 601.990.5070 | C: 601.565.1070
Clif@TomSmithLand.com



TOM WISEMAN
ASSOCIATE BROKER

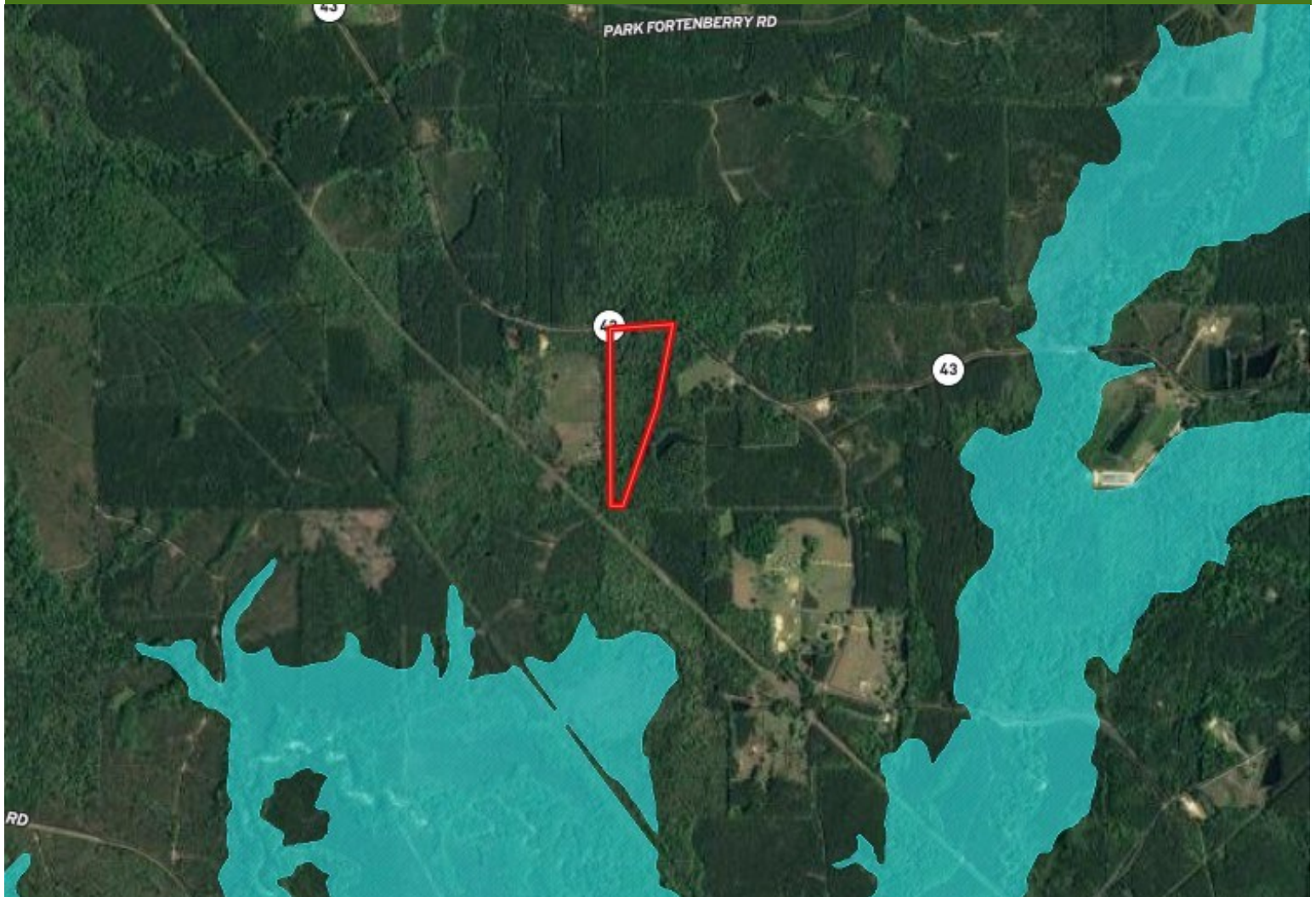
O: 662.268.6333 | C: 662.317.0467
TWiseman@TomSmithLand.com

TomSmithLandandHomes.com

Information is believed to be accurate but not guaranteed.



Flood Map



CLIF CANNON
REALTOR®

O: 601.990.5070 | C: 601.565.1070
Clif@TomSmithLand.com



TOM WISEMAN
ASSOCIATE BROKER

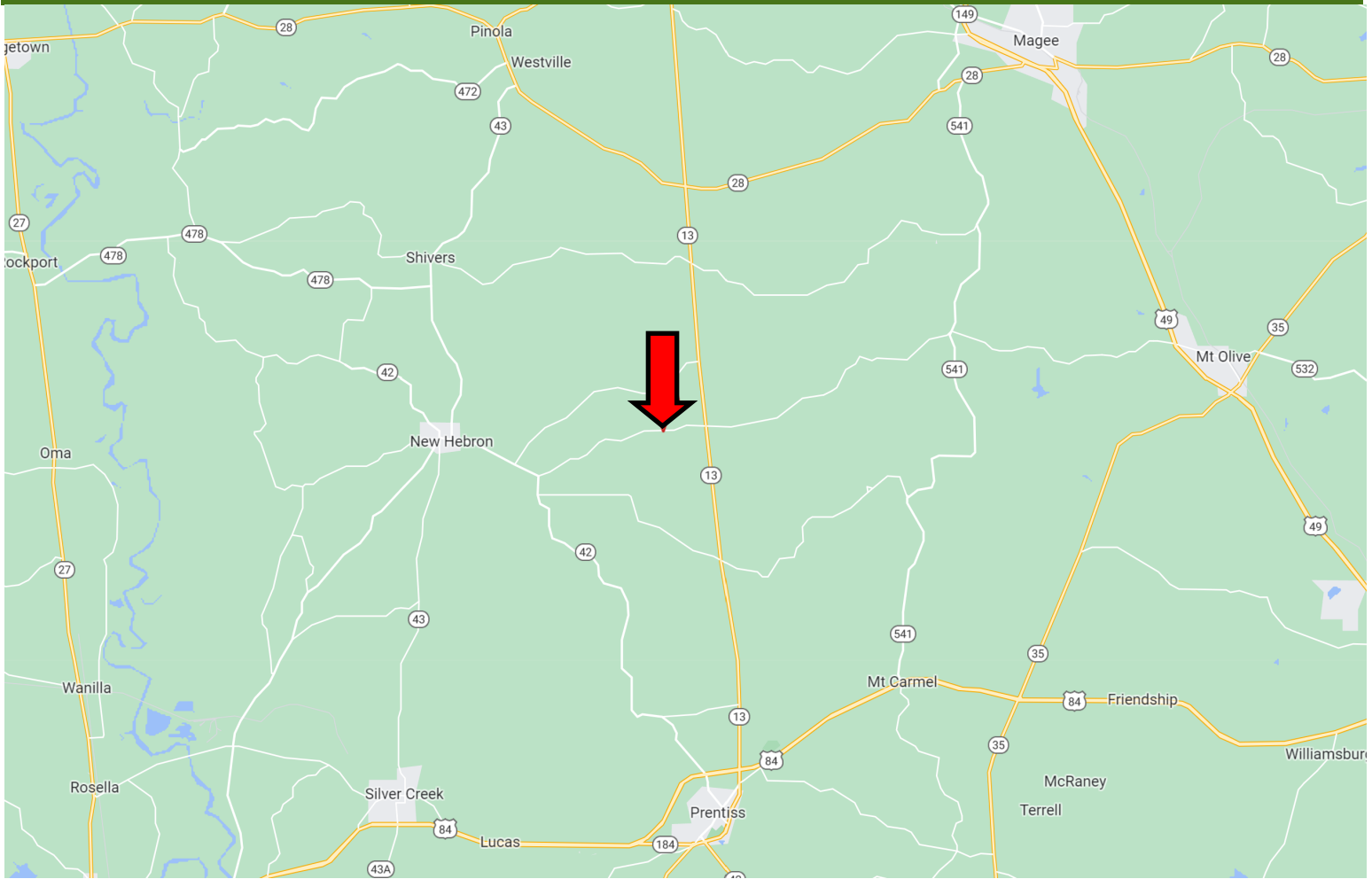
O: 662.268.6333 | C: 662.317.0467
TWiseman@TomSmithLand.com

TomSmithLandandHomes.com

Information is believed to be accurate but not guaranteed.



Directional Map



Directions from the intersection of US-84 and MS-13 in Prentiss, MS: Travel south on MS-13/MS-184 for 2.2 miles. Turn left at the stop sign to stay on MS-13 and travel for 11.1 miles. Turn right onto MS-43 and travel for 3 miles. The property will be on the right. Google Maps

CLIF CANNON
REALTOR®

O: 601.990.5070 | C: 601.565.1070
Clif@TomSmithLand.com



TOM WISEMAN
ASSOCIATE BROKER

O: 662.268.6333 | C: 662.317.0467
TWiseman@TomSmithLand.com

TomSmithLandandHomes.com

Information is believed to be accurate but not guaranteed.

