

12± ACRES OF SECLUSION AND PEACE in Hinds County, MS



\$75,000



Looking for a quiet place outside of the city to call your own? Look no further! This 12± acres in Utica, Hinds County, MS, is the perfect blend of seclusion and convenience. Located just minutes from I-55 and the amenities of the capital city. This property would make for an excellent hunting retreat or a dream homesite with plenty of back yard!

Directions from I-55 in Terry, MS: Take Exit 78 toward Green Gable Rd. In .1 miles turn right onto Green Gable Rd. In 385 ft, turn left onto I-55 South Frontage Rd. In .7 miles, turn right onto Tank Rd. In 9.1 miles, turn right onto Chapel Hill Rd. The property will be on the left in 2.2 miles. Address: 6117 Chapel Hill Rd, Utica, MS.



CLAY
SIMMONS
REALTOR®
Office: 601.898.2772
Cell: 601.672.6864
Clay@TomSmithHomes.com



A Real Estate Expert You Can Trust

TomSmithLandandHomes.com

Information is believed to be accurate but not guaranteed.





CLAY SIMMONS

REALTOR®

Office: 601.898.2772

Cell: 601.672.6864

Clay@TomSmithHomes.com



Expect More. Get More.

A Real Estate Expert You Can Trust

TomSmithLandandHomes.com

Information is believed to be accurate but not guaranteed.





CLAY SIMMONS

REALTOR®

Office: 601.898.2772

Cell: 601.672.6864

Clay@TomSmithHomes.com



Expect More. Get More.

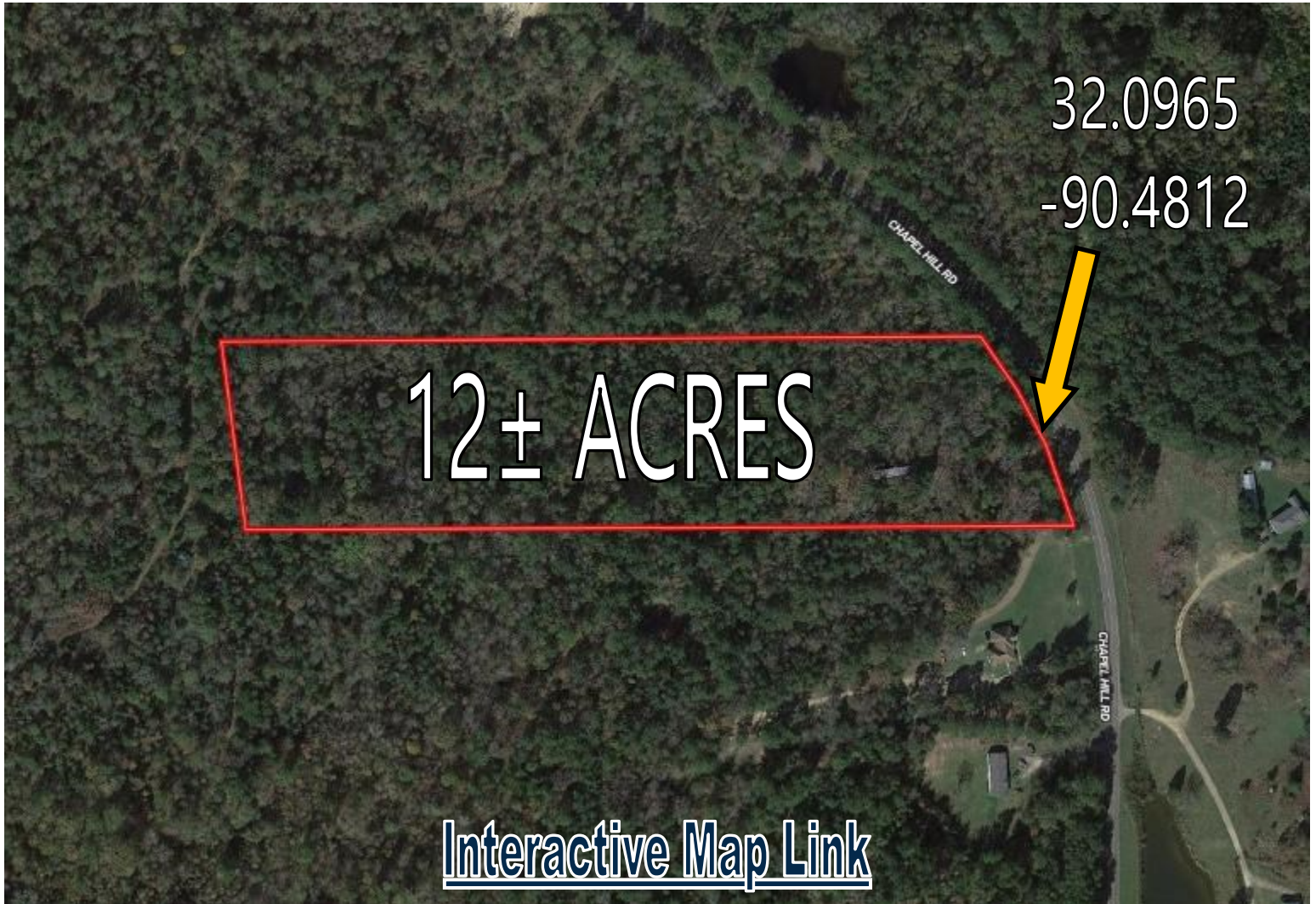
A Real Estate Expert You Can Trust

TomSmithLandandHomes.com

Information is believed to be accurate but not guaranteed.



Aerial Map



CLAY SIMMONS

REALTOR®

Office: 601.898.2772

Cell: 601.672.6864

Clay@TomSmithHomes.com



Expect More. Get More.

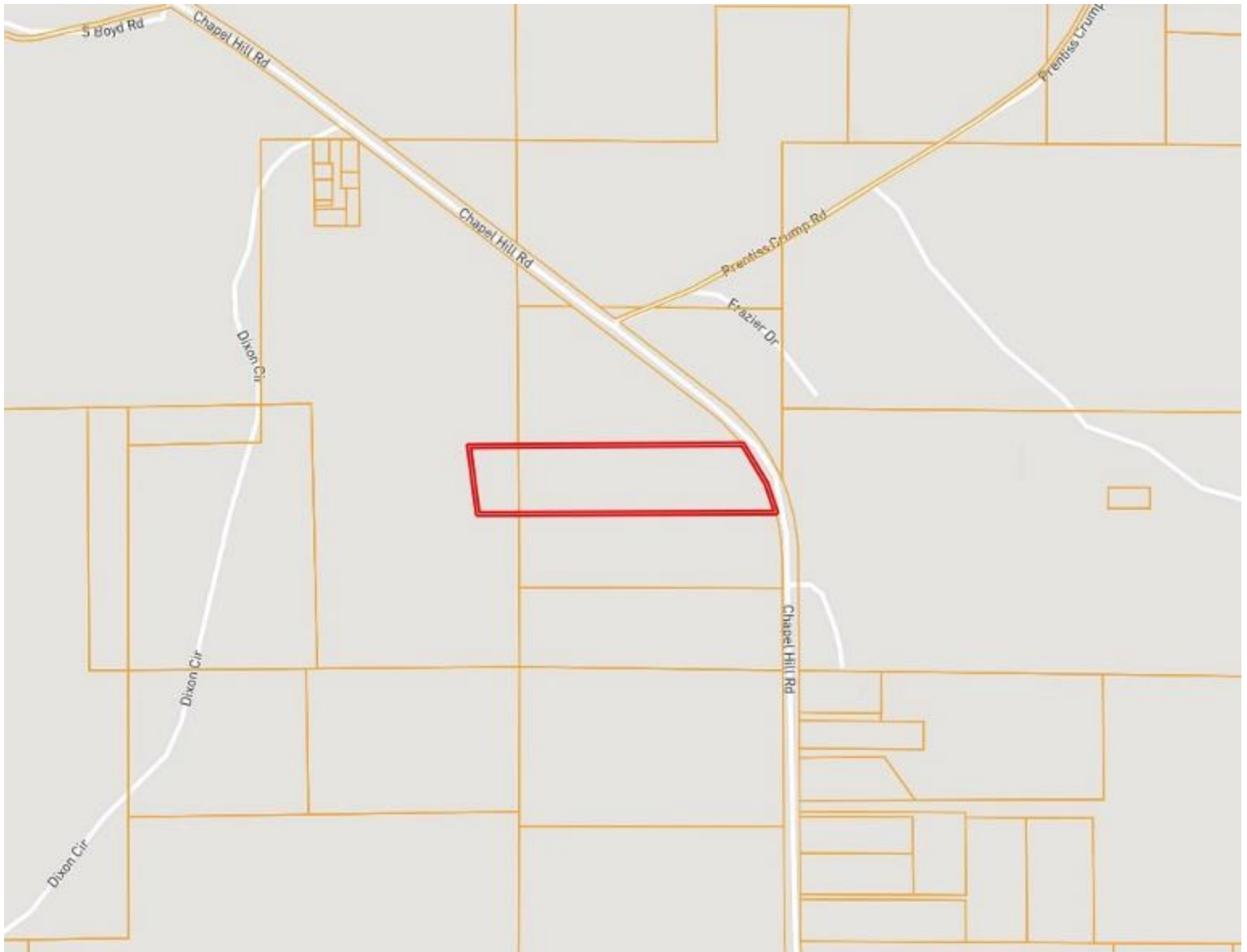
A Real Estate Expert You Can Trust

TomSmithLandandHomes.com

Information is believed to be accurate but not guaranteed.



Ownership Map



CLAY SIMMONS

REALTOR®

Office: 601.898.2772

Cell: 601.672.6864

Clay@TomSmithHomes.com



Expect More. Get More.

A Real Estate Expert You Can Trust

TomSmithLandandHomes.com

Information is believed to be accurate but not guaranteed.



Topography Map



CLAY SIMMONS

REALTOR®

Office: 601.898.2772

Cell: 601.672.6864

Clay@TomSmithHomes.com



Expect More. Get More.

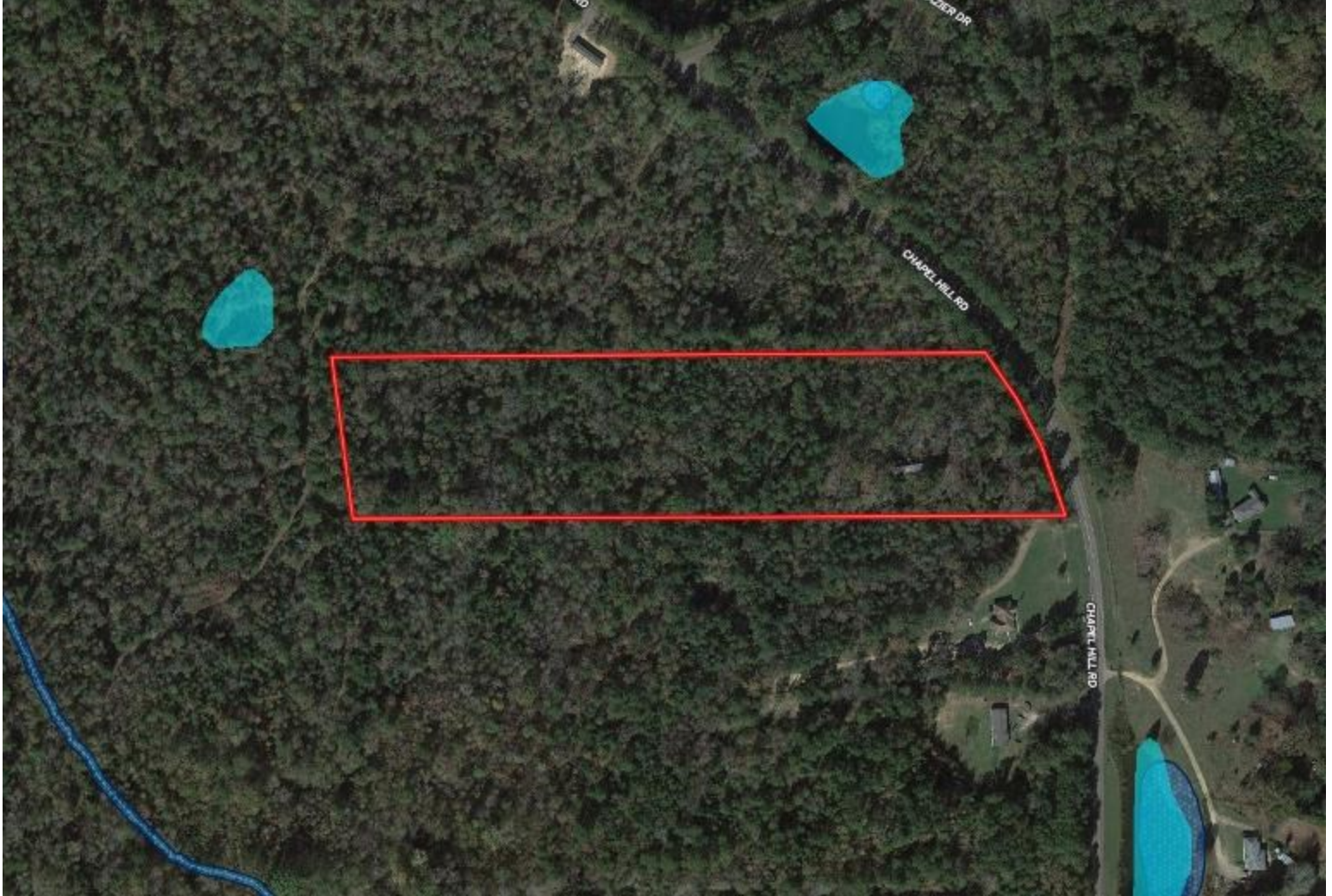
A Real Estate Expert You Can Trust

TomSmithLandandHomes.com

Information is believed to be accurate but not guaranteed.



Water Features Map



CLAY SIMMONS
REALTOR®

Office: 601.898.2772

Cell: 601.672.6864

Clay@TomSmithHomes.com



Expect More. Get More.

A Real Estate Expert You Can Trust

TomSmithLandandHomes.com

Information is believed to be accurate but not guaranteed.



Soil Map



CLAY SIMMONS
REALTOR®

Office: 601.898.2772

Cell: 601.672.6864

Clay@TomSmithHomes.com



Expect More. Get More.

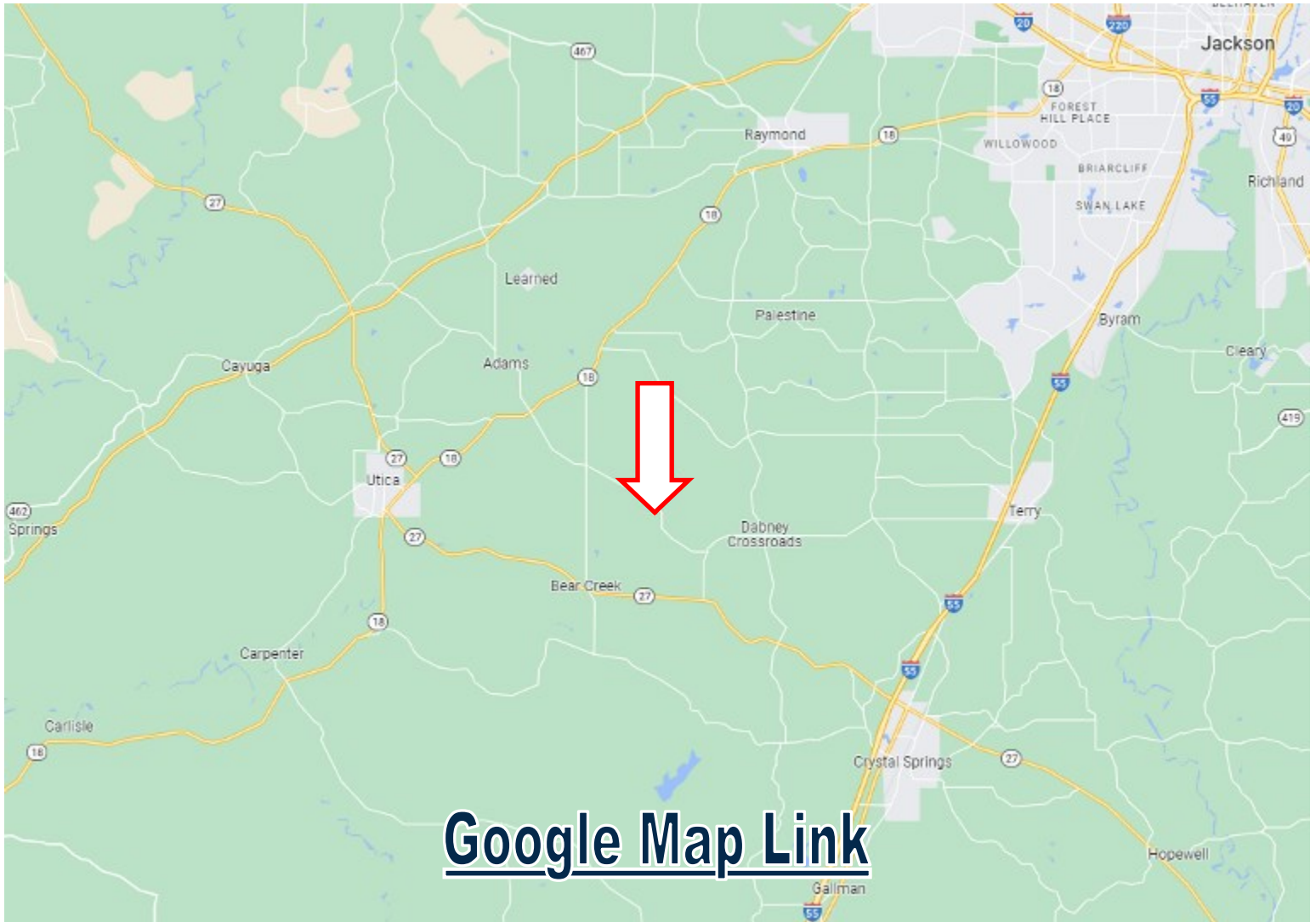
A Real Estate Expert You Can Trust

TomSmithLandandHomes.com

Information is believed to be accurate but not guaranteed.



Directional Map



[Google Map Link](#)

Directions from I-55 in Terry, MS: Take Exit 78 toward Green Gable Rd. In .1 miles turn right onto Green Gable Rd. In 385 ft, turn left onto I-55 South Frontage Rd. In .7 miles, turn right onto Tank Rd. In 9.1 miles, turn right onto Chapel Hill Rd. The property will be on the left in 2.2 miles. Address: 6117 Chapel Hill Rd, Utica, MS.



CLAY
SIMMONS
REALTOR®

Office: 601.898.2772
Cell: 601.672.6864
Clay@TomSmithHomes.com



A Real Estate Expert You Can Trust

TomSmithLandandHomes.com

Information is believed to be accurate but not guaranteed.

