

36+/- Acre Recreational Tract in Jefferson Davis County, MS



000 Hwy 43
Oak Vale, MS 39656

\$126,000

Here it is if you are looking for an excellent hardwood recreational tract! This 36+/- acre tract is south of Prentiss, MS in Jefferson Davis County. A small pond adds the opportunity for additional recreation as well as a great watering hole for wildlife. The mix of towering hardwoods and pine trees makes this mixed forest excellent Whitetail Deer habitat. The internal road provides access to a large portion of the property. The terrain is primarily flat, making this great tract very accessible. Call Clif to schedule your private showing today! Additional acreage is available.

Directions from the intersection of US-84 and MS-13 in Prentiss, MS: Travel south on MS-13 / MS-184 for 2.2 miles. Turn left at the stop sign to stay on MS-13 and travel for 11.1 miles. Turn right onto MS-43 and travel for 3 miles. The property will be on the right.

[Google Maps](#)



CLIF CANNON
REALTOR®

O: 601.990.5070 | C: 601.565.1070
Clif@TomSmithLand.com



Expect More. Get More.



TOM WISEMAN
ASSOCIATE BROKER

O: 662.268.6333 | C: 662.317.0467
TWiseman@TomSmithLand.com

TomSmithLandandHomes.com

Information is believed to be accurate but not guaranteed.





CLIF CANNON
REALTOR®

O: 601.990.5070 | C: 601.565.1070
Clif@TomSmithLand.com



TOM WISEMAN
ASSOCIATE BROKER

O: 662.268.6333 | C: 662.317.0467
TWiseman@TomSmithLand.com

TomSmithLandandHomes.com

Information is believed to be accurate but not guaranteed.





CLIF CANNON
REALTOR®

O: 601.990.5070 | C: 601.565.1070
Clif@TomSmithLand.com



TOM WISEMAN
ASSOCIATE BROKER

O: 662.268.6333 | C: 662.317.0467
TWiseman@TomSmithLand.com

TomSmithLandandHomes.com

Information is believed to be accurate but not guaranteed.



Aerial Map



Interactive Map

CLIF CANNON
REALTOR®

O: 601.990.5070 | C: 601.565.1070
Clif@TomSmithLand.com



TOM WISEMAN
ASSOCIATE BROKER

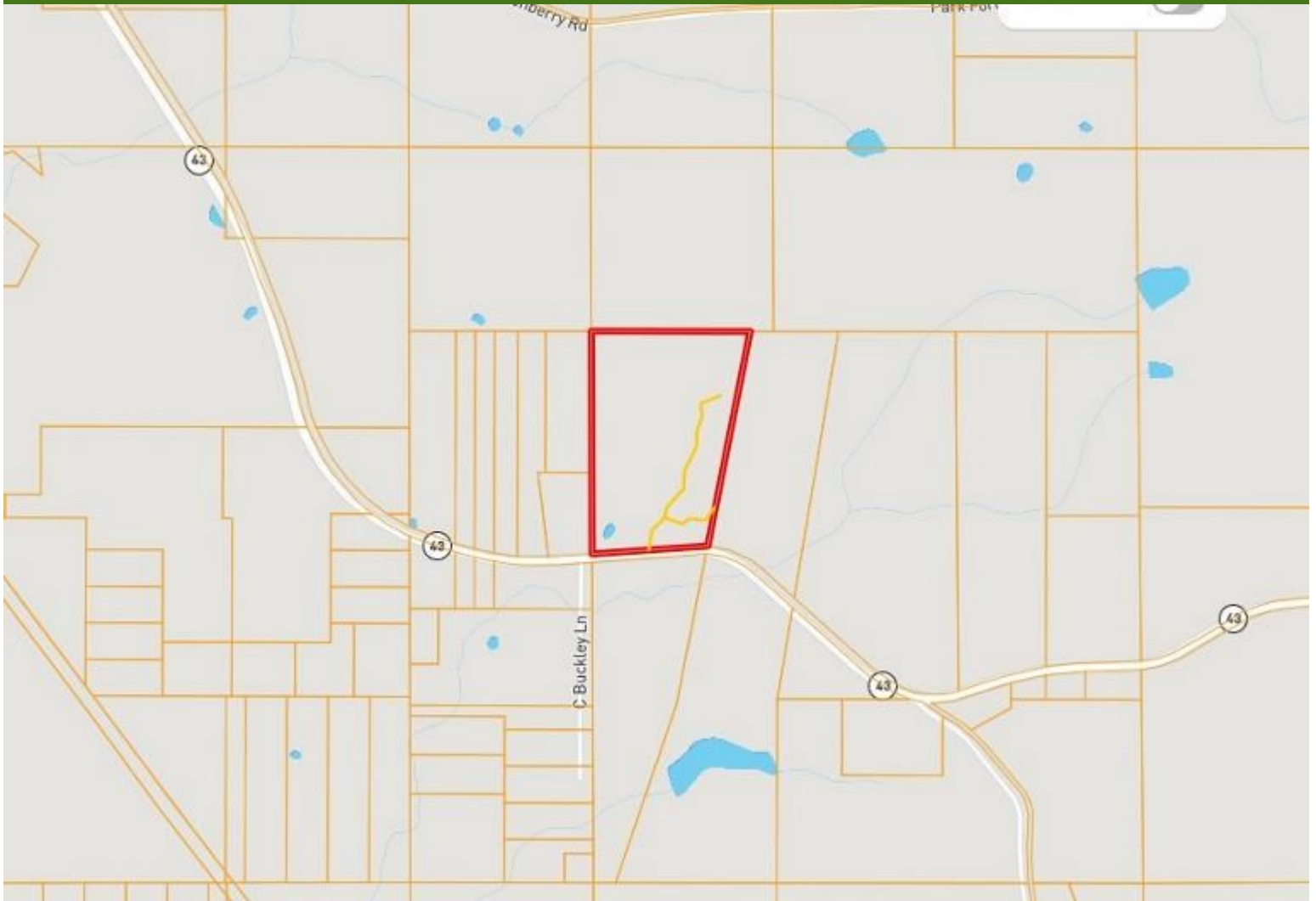
O: 662.268.6333 | C: 662.317.0467
TWiseman@TomSmithLand.com

TomSmithLandandHomes.com

Information is believed to be accurate but not guaranteed.



Ownership Map



CLIF CANNON
REALTOR®

O: 601.990.5070 | C: 601.565.1070
Clif@TomSmithLand.com



TOM WISEMAN
ASSOCIATE BROKER

O: 662.268.6333 | C: 662.317.0467
TWiseman@TomSmithLand.com

TomSmithLandandHomes.com

Information is believed to be accurate but not guaranteed.



Topographic Map



CLIF CANNON
REALTOR®

O: 601.990.5070 | C: 601.565.1070
Clif@TomSmithLand.com



TOM WISEMAN
ASSOCIATE BROKER

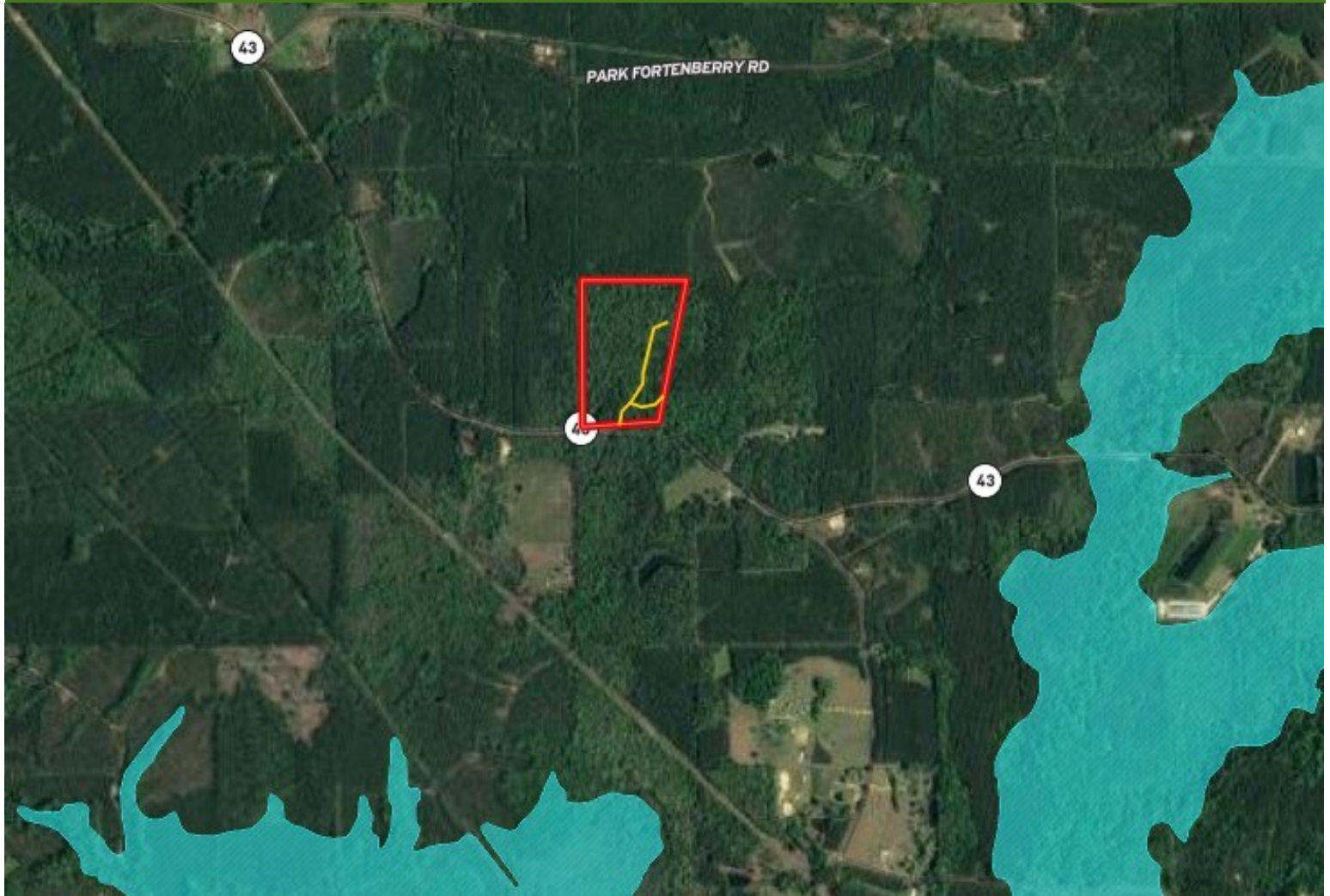
O: 662.268.6333 | C: 662.317.0467
TWiseman@TomSmithLand.com

TomSmithLandandHomes.com

Information is believed to be accurate but not guaranteed.



Flood Map



CLIF CANNON
REALTOR®

O: 601.990.5070 | C: 601.565.1070
Clif@TomSmithLand.com



TOM WISEMAN
ASSOCIATE BROKER

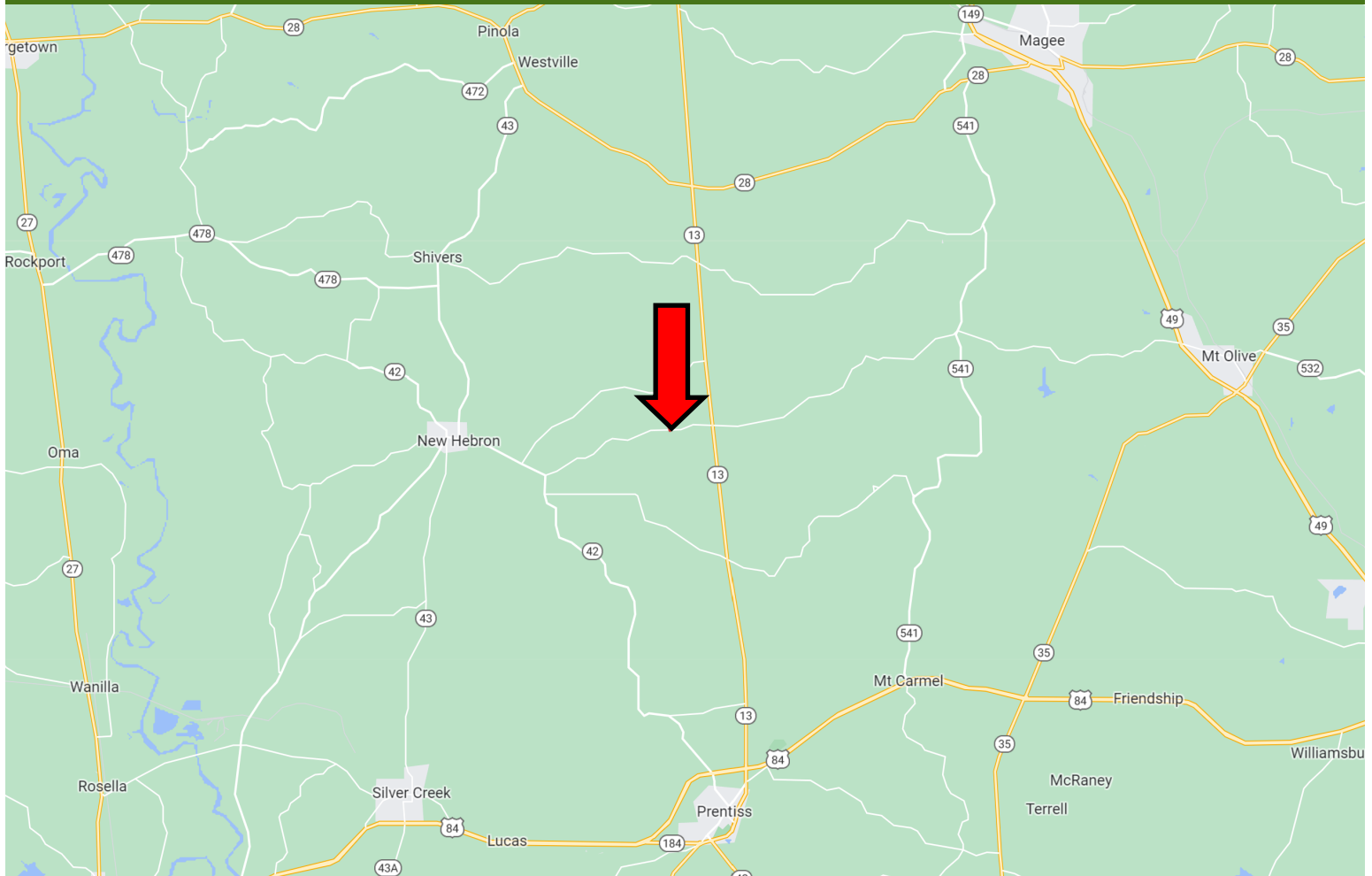
O: 662.268.6333 | C: 662.317.0467
TWiseman@TomSmithLand.com

TomSmithLandandHomes.com

Information is believed to be accurate but not guaranteed.



Directional Map



Directions from the intersection of US-84 and MS-13 in Prentiss, MS: Travel south on MS-13 / MS-184 for 2.2 miles. Turn left at the stop sign to stay on MS-13 and travel for 11.1 miles. Turn right onto MS-43 and travel for 3 miles. The property will be on the right. [Google Maps](#)

CLIF CANNON
REALTOR®

O: 601.990.5070 | C: 601.565.1070
Clif@TomSmithLand.com



TOM WISEMAN
ASSOCIATE BROKER

O: 662.268.6333 | C: 662.317.0467
TWiseman@TomSmithLand.com

TomSmithLandandHomes.com

Information is believed to be accurate but not guaranteed.

