

66+/- Acre Recreational Tract in Jefferson Davis County, MS



000 Hwy 43
Oak Vale, MS 39656

\$198,000

If you are looking for an excellent hardwood recreational tract, here it is! This 66+/- acre tract is just south of Prentiss, MS in Jefferson Davis County. A small pond adds the opportunity for additional recreation as well as a great watering hole for wild-life. The mix of towering hardwoods and pine trees makes this mixed forest excellent Whitetail Deer habitat. The internal road provides access to a large portion of the property. The terrain is mostly flat, making this great tract very accessible. Just off the road is a small thicket that deceives the average person. But once you get into the interior, you will be amazed at the beautiful meadow interspersed with mature hardwoods. You can envision the whitetail deer grazing acorns or a big tom turkey strutting with his hens. The powerline offers a convenient place for a food plot as well. Call Clif to schedule your private showing today!

Directions from the intersection of US-84 and MS-13 in Prentiss, MS: Travel south on MS-13/MS-184 for 2.2 miles. Turn left at the stop sign to stay on MS-13 and travel for 11.1 miles. Turn right onto MS-43 and travel for 3 miles. The property will be on both sides of MS-43.

Google Maps



CLIF CANNON
REALTOR®

O: 601.990.5070 | C: 601.565.1070
Clif@TomSmithLand.com



Expect More. Get More.



TOM WISEMAN
ASSOCIATE BROKER

O: 662.268.6333 | C: 662.317.0467
TWiseman@TomSmithLand.com

TomSmithLandandHomes.com

Information is believed to be accurate but not guaranteed.





CLIF CANNON
REALTOR®

O: 601.990.5070 | C: 601.565.1070
Clif@TomSmithLand.com



TOM WISEMAN
ASSOCIATE BROKER

O: 662.268.6333 | C: 662.317.0467
TWiseman@TomSmithLand.com

TomSmithLandandHomes.com

Information is believed to be accurate but not guaranteed.





CLIF CANNON
REALTOR®

O: 601.990.5070 | C: 601.565.1070
Clif@TomSmithLand.com



TOM WISEMAN
ASSOCIATE BROKER

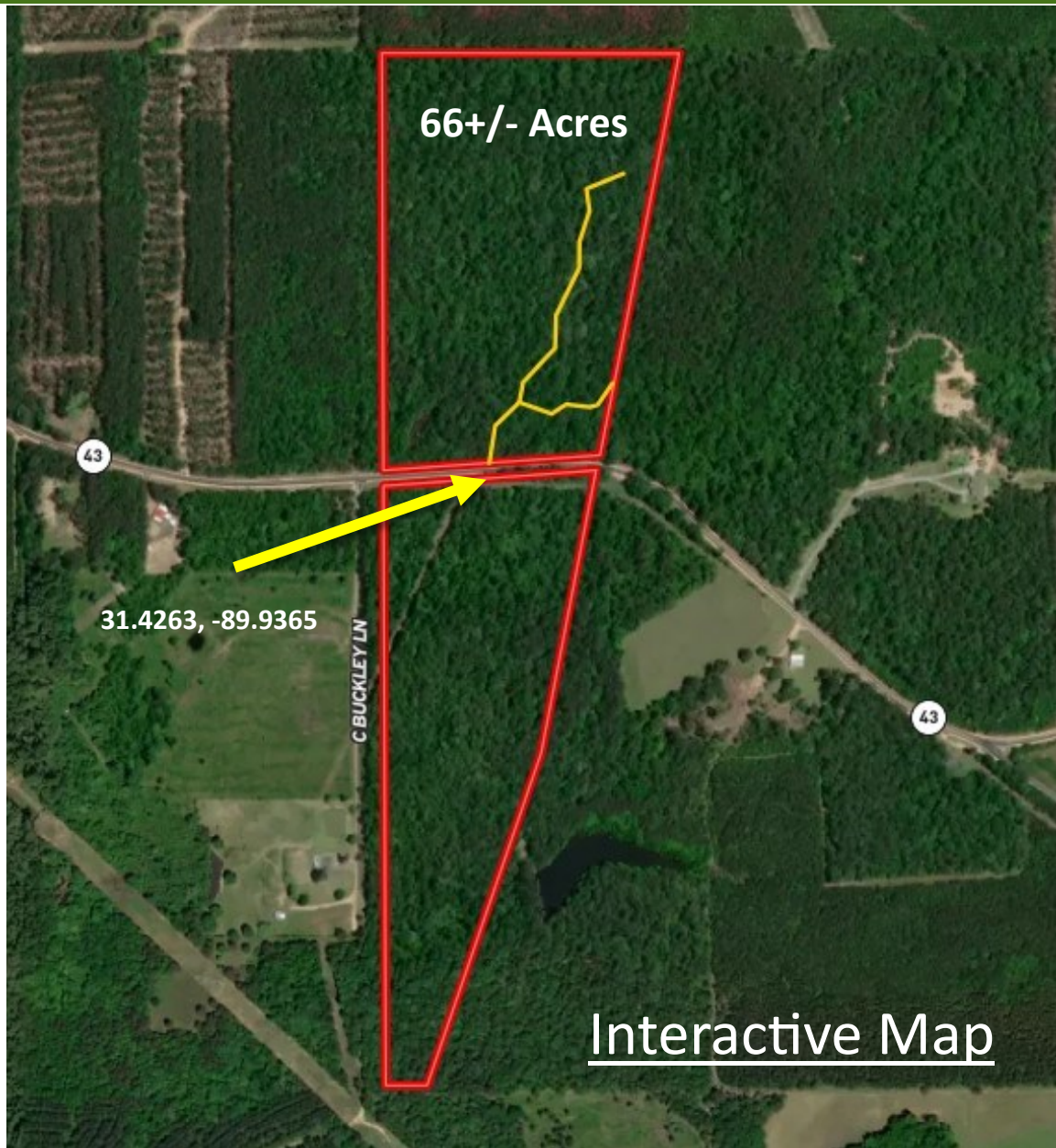
O: 662.268.6333 | C: 662.317.0467
TWiseman@TomSmithLand.com

TomSmithLandandHomes.com

Information is believed to be accurate but not guaranteed.



Aerial Map



CLIF CANNON
REALTOR®

O: 601.990.5070 | C: 601.565.1070
Clif@TomSmithLand.com



TOM WISEMAN
ASSOCIATE BROKER

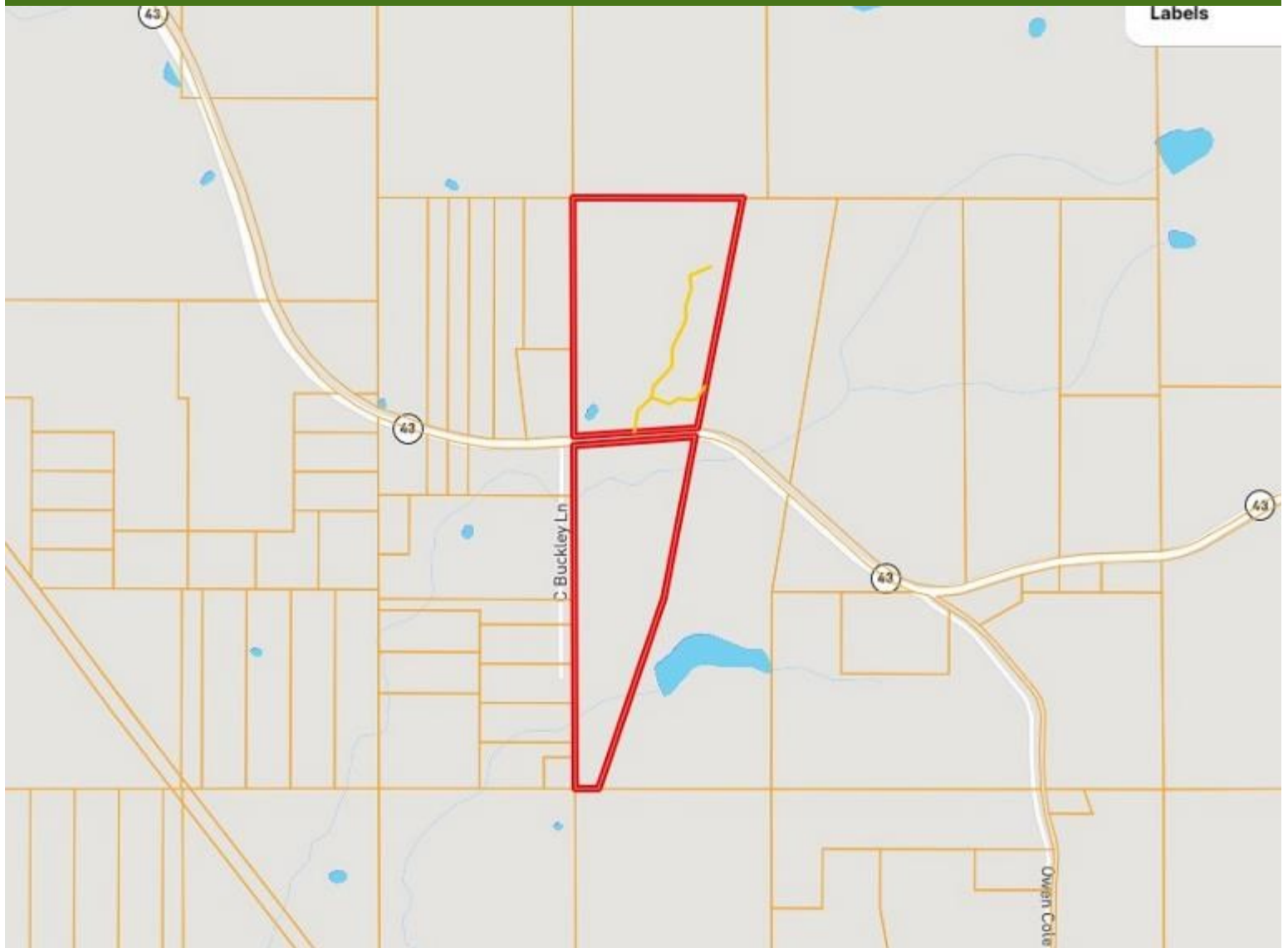
O: 662.268.6333 | C: 662.317.0467
TWiseman@TomSmithLand.com

TomSmithLandandHomes.com

Information is believed to be accurate but not guaranteed.



Ownership Map



CLIF CANNON
REALTOR®

O: 601.990.5070 | C: 601.565.1070
Clif@TomSmithLand.com



TOM WISEMAN
ASSOCIATE BROKER

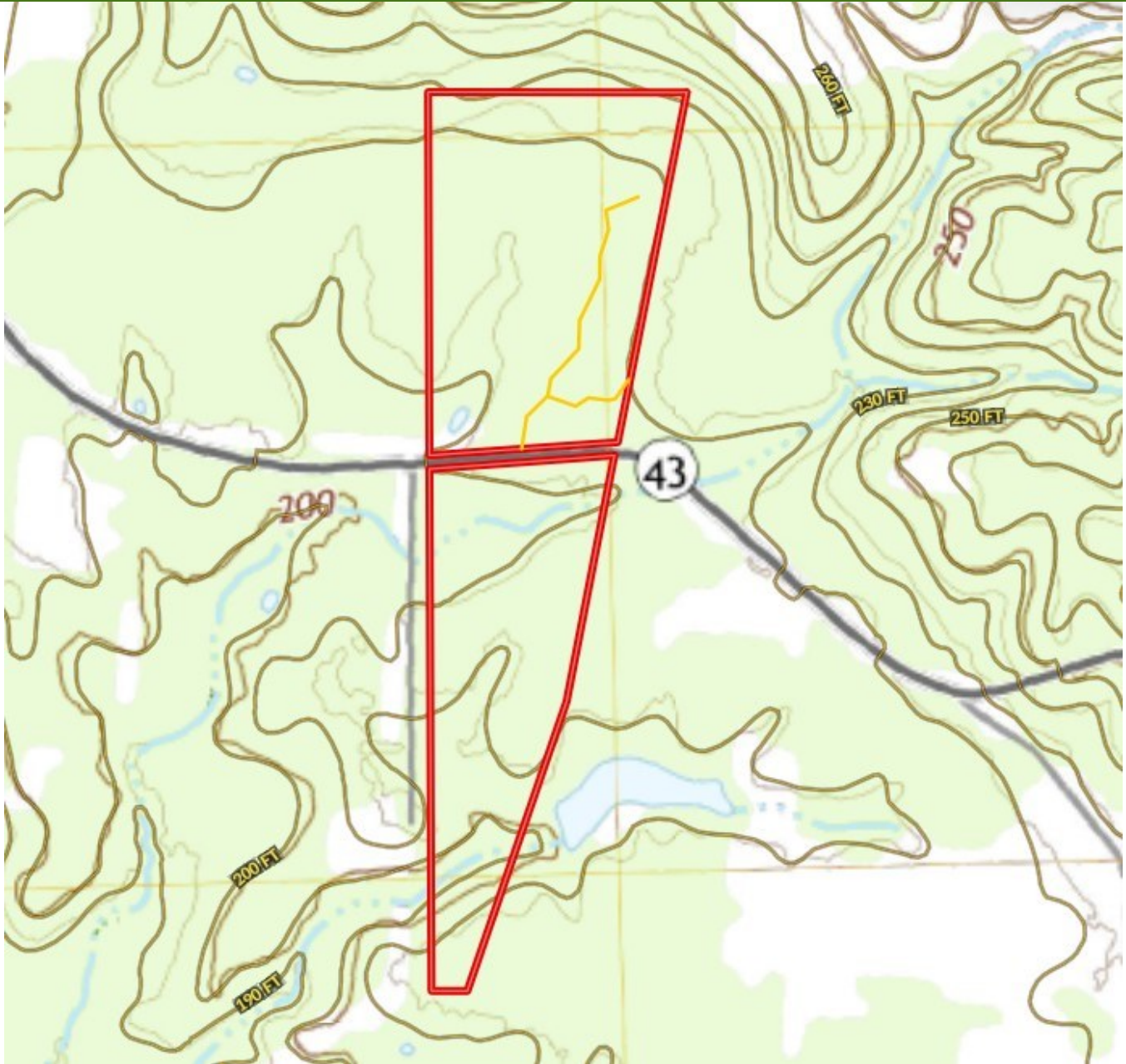
O: 662.268.6333 | C: 662.317.0467
TWiseman@TomSmithLand.com

TomSmithLandandHomes.com

Information is believed to be accurate but not guaranteed.



Topographic Map



CLIF CANNON
REALTOR®

O: 601.990.5070 | C: 601.565.1070
Clif@TomSmithLand.com



TOM WISEMAN
ASSOCIATE BROKER

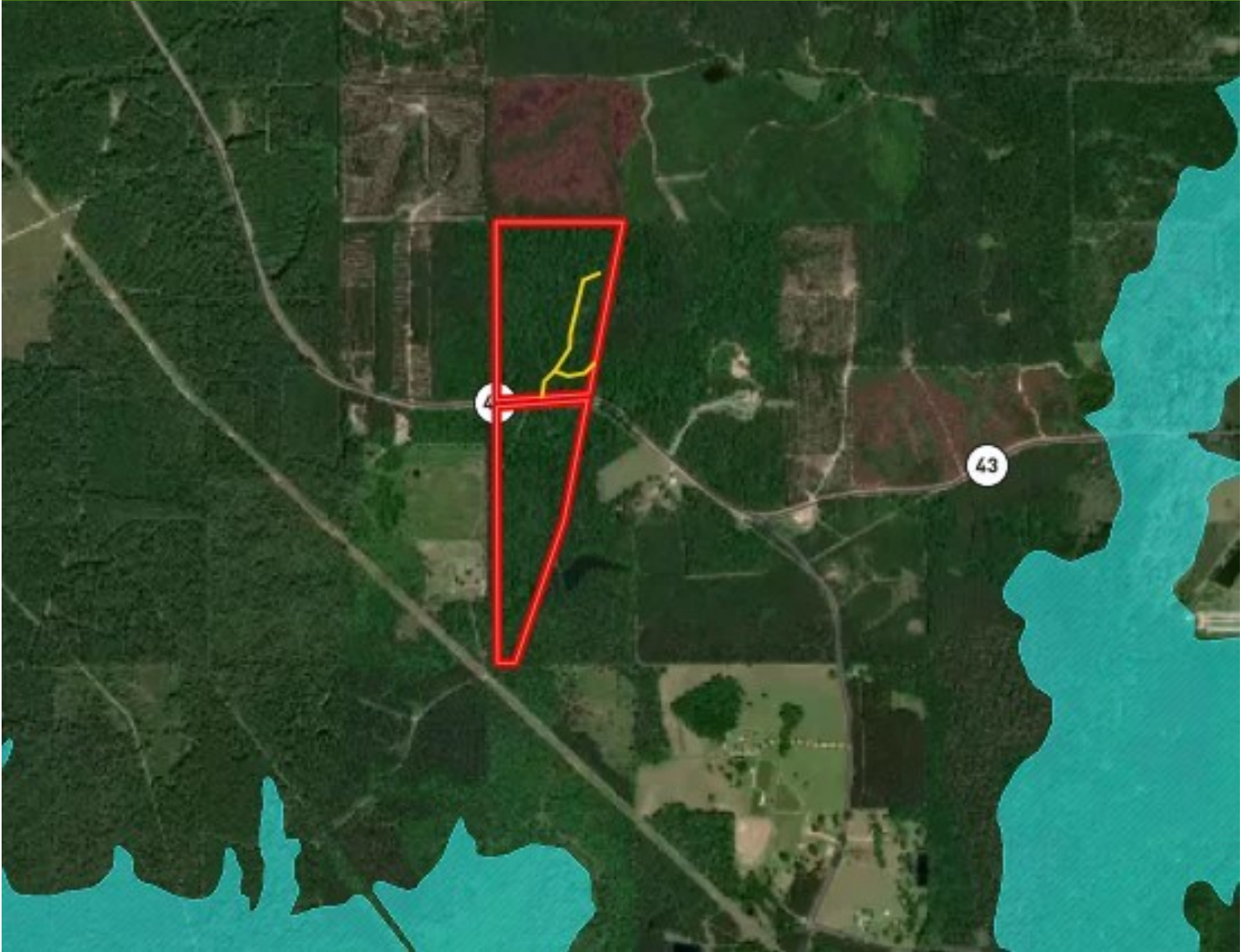
O: 662.268.6333 | C: 662.317.0467
TWiseman@TomSmithLand.com

TomSmithLandandHomes.com

Information is believed to be accurate but not guaranteed.



Flood Map



CLIF CANNON
REALTOR®

O: 601.990.5070 | C: 601.565.1070
Clif@TomSmithLand.com



TOM WISEMAN
ASSOCIATE BROKER

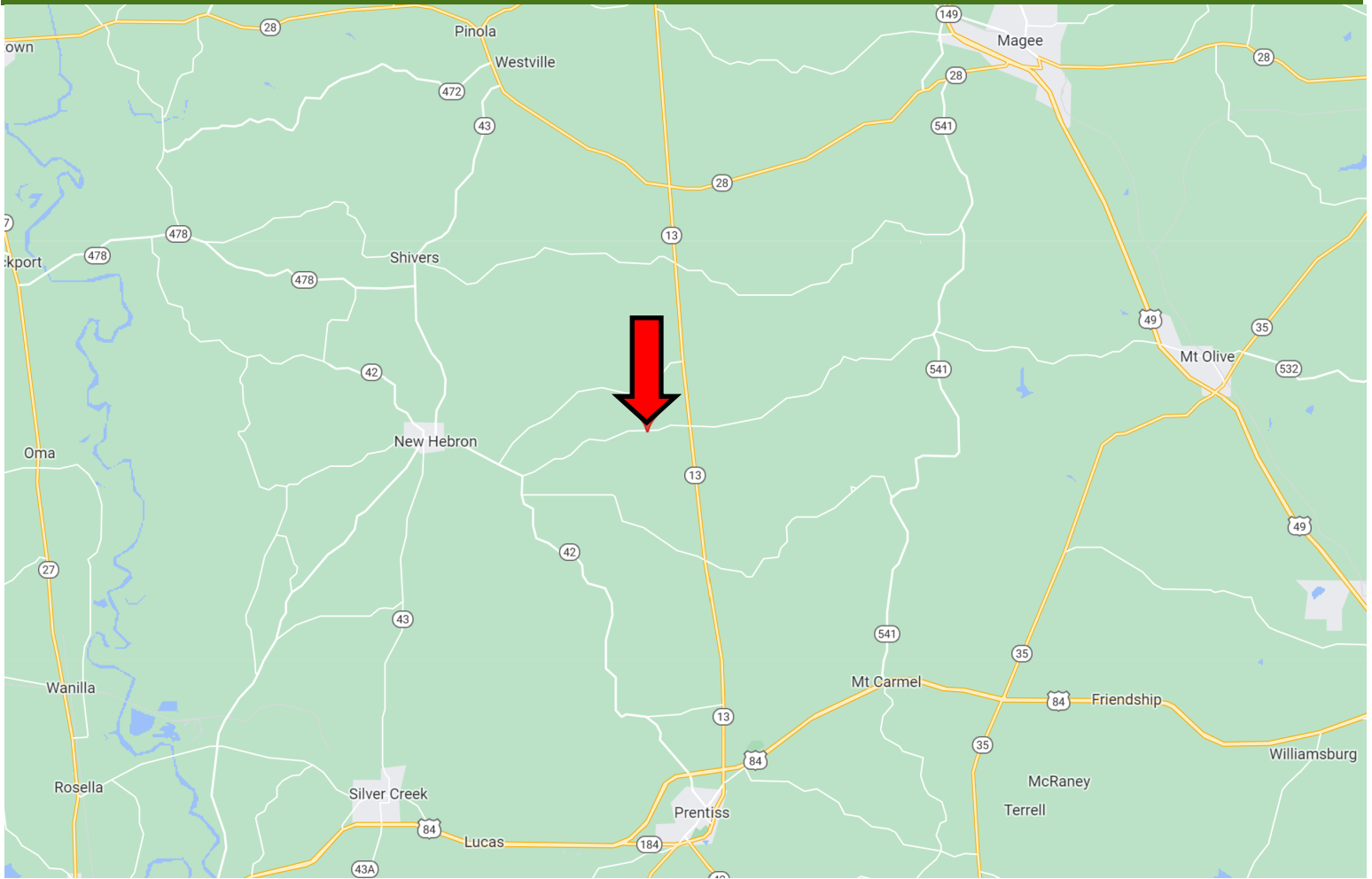
O: 662.268.6333 | C: 662.317.0467
TWiseman@TomSmithLand.com

TomSmithLandandHomes.com

Information is believed to be accurate but not guaranteed.



Directional Map



Directions from the intersection of US-84 and MS-13 in Prentiss, MS: Travel south on MS-13/MS-184 for 2.2 miles. Turn left at the stop sign to stay on MS-13 and travel for 11.1 miles. Turn right onto MS-43 and travel for 3 miles. The property will be on both sides of MS-43.

Google Maps



CLIF CANNON
REALTOR®

O: 601.990.5070 | C: 601.565.1070
Clif@TomSmithLand.com

TOM WISEMAN
ASSOCIATE BROKER

O: 662.268.6333 | C: 662.317.0467
TWiseman@TomSmithLand.com

TomSmithLandandHomes.com

Information is believed to be accurate but not guaranteed.

