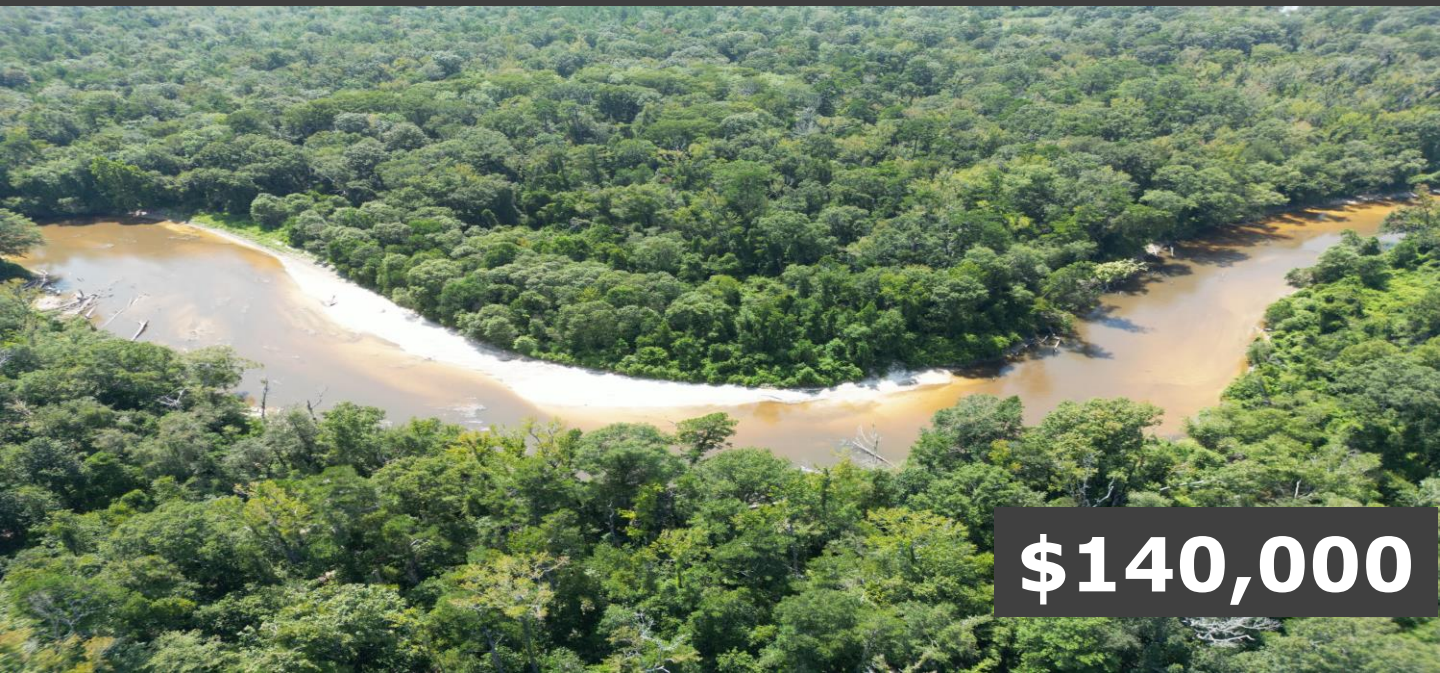


# RECREATIONAL TRACT

## 30.6± Acres in Stone County, MS



**\$140,000**

Have you been looking for a place to spend the weekends or build a fishing camp? Look no further! This 30.6 +/- acre recreational tract in Stone County, MS, has both. This property is located in Wiggins, MS, and touches the Desoto National Forest. Black Creek and Sandy Creek flow to the West and North of this tract. Several boat ramps are nearby off Highway 26, and boat ramps for the Leaf River are also right down the road. A half-acre food plot and a road around the property's border make riding around easy. Imagine having a camp house on stilts overlooking Black Creek where you could fish and swim all day while having access to the national forest with all your hunting needs covered. To schedule a private showing, call or text Walker!

**Directions from Hwy 49 and Hwy 26 in Wiggins, MS:** Take exit for Hwy 26 toward Poplarville/Lucedale. Turn left onto Hwy 26 and travel 15.5 miles. Turn left onto Deep Creek Road and travel 1.4 miles. Turn left onto Alexander Bridge Road. After .6 miles, the property will be on both sides of the road.



**WALKER TRANUM**  
REALTOR®

O: 662.268.6333 | C: 662.769.1442  
[Walker@TomSmithHomes.com](mailto:Walker@TomSmithHomes.com)



Expect More. Get More.



**JOHN DELPAPA**  
REALTOR®

O: 662.268.6333 | C: 662.768.2455  
[John@TomSmithLand.com](mailto:John@TomSmithLand.com)

**TomSmithLandandHomes.com**

Information is believed to be accurate but not guaranteed.







**WALKER TRANUM**  
REALTOR®

O: 662.268.6333 | C: 662.769.1442  
Walker@TomSmithHomes.com



Expect More. Get More.



**JOHN DELPAPA**  
REALTOR®

O: 662.268.6333 | C: 662.768.2455  
John@TomSmithLand.com

**TomSmithLandandHomes.com**

Information is believed to be accurate but not guaranteed.







**WALKER TRANUM**  
REALTOR®

O: 662.268.6333 | C: 662.769.1442  
Walker@TomSmithHomes.com



Expect More. Get More.



**JOHN DELPAPA**  
REALTOR®

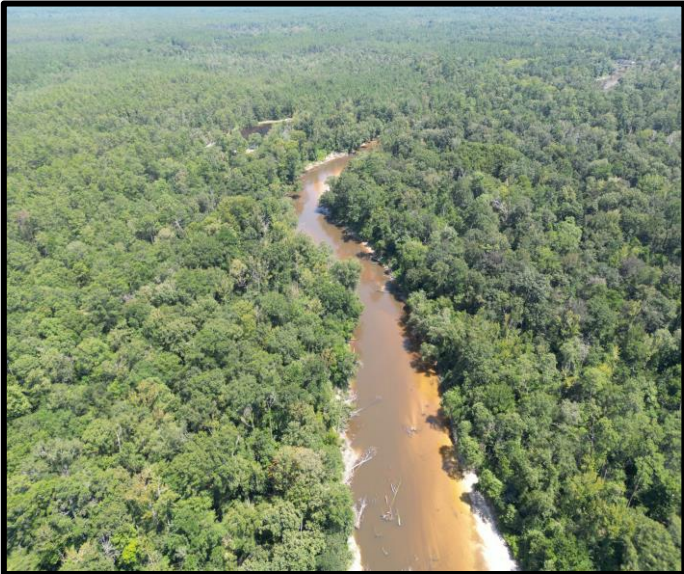
O: 662.268.6333 | C: 662.768.2455  
John@TomSmithLand.com

**TomSmithLandandHomes.com**

Information is believed to be accurate but not guaranteed.







**WALKER TRANUM**  
REALTOR®

O: 662.268.6333 | C: 662.769.1442  
[Walker@TomSmithHomes.com](mailto:Walker@TomSmithHomes.com)



Expect More. Get More.



**JOHN DELPAPA**  
REALTOR®

O: 662.268.6333 | C: 662.768.2455  
[John@TomSmithLand.com](mailto:John@TomSmithLand.com)

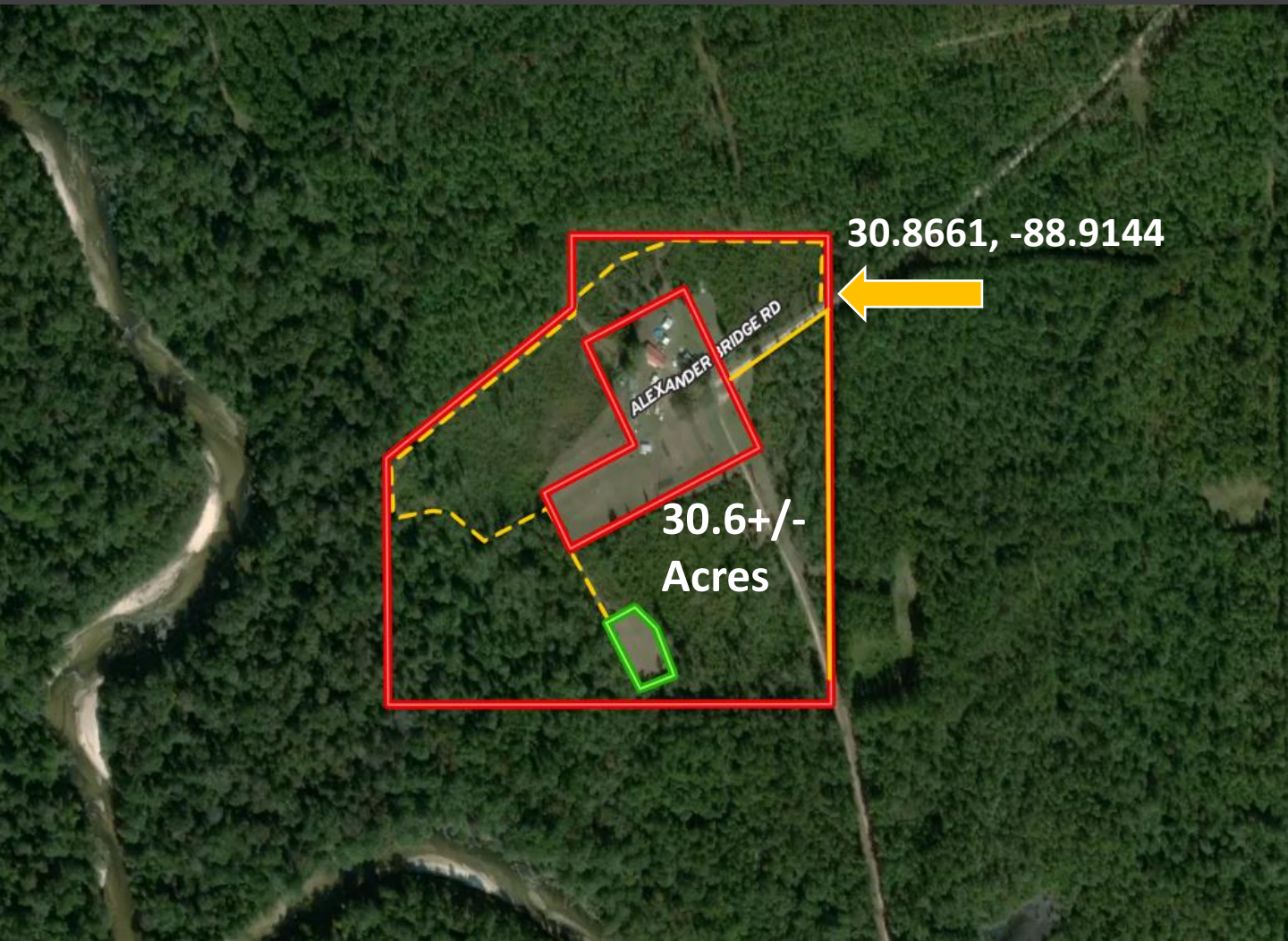
**TomSmithLandandHomes.com**

Information is believed to be accurate but not guaranteed.





# Aerial Map



Click [Here](#) for Interactive Link



**WALKER TRANUM**  
REALTOR®

O: 662.268.6333 | C: 662.769.1442  
Walker@TomSmithHomes.com



Expect More. Get More.



**JOHN DELPAPA**  
REALTOR®

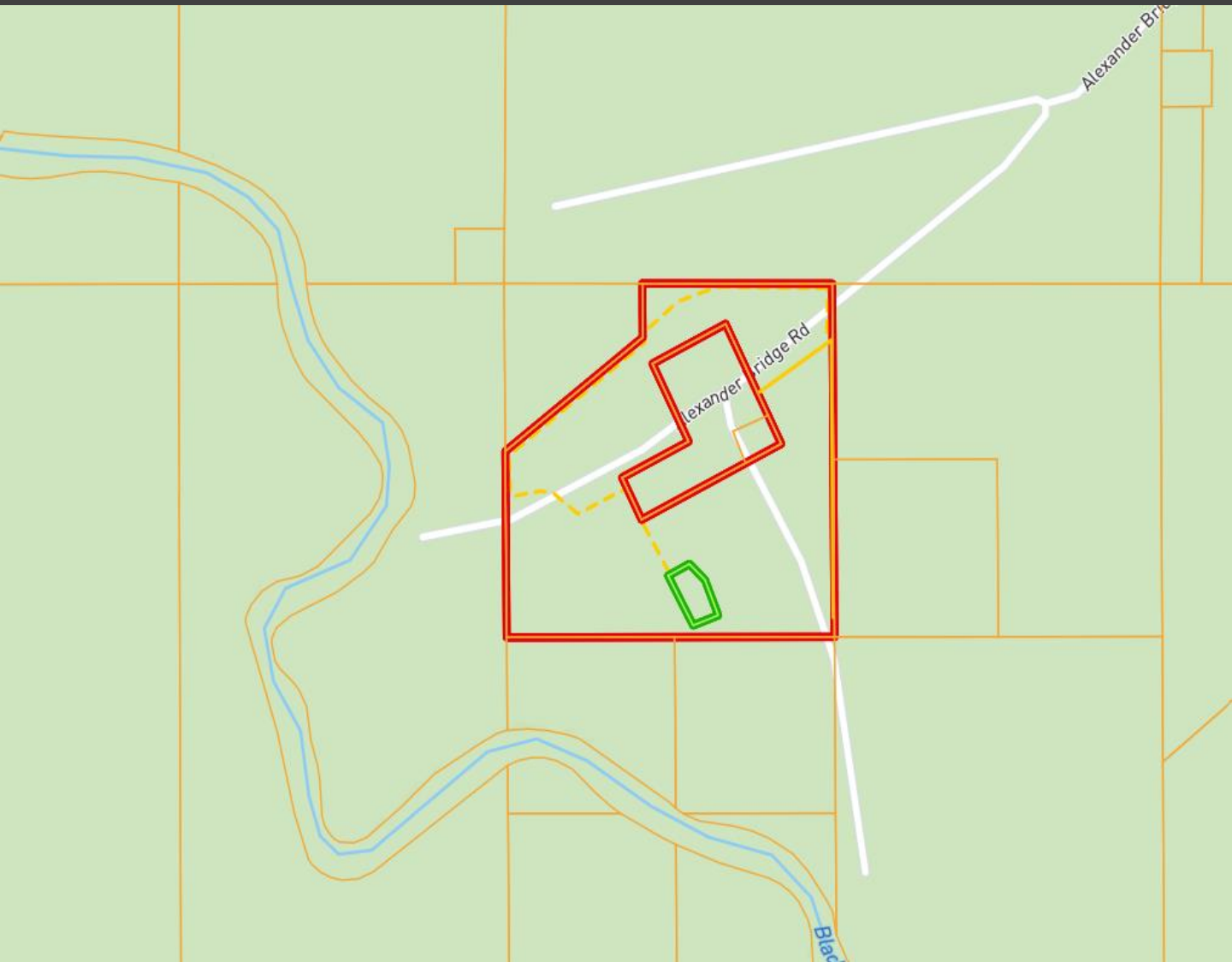
O: 662.268.6333 | C: 662.768.2455  
John@TomSmithLand.com

**TomSmithLandandHomes.com**

Information is believed to be accurate but not guaranteed.



# Ownership Map



**WALKER TRANUM**  
REALTOR®

O: 662.268.6333 | C: 662.769.1442  
Walker@TomSmithHomes.com



Expect More. Get More.



**JOHN DELPAPA**  
REALTOR®

O: 662.268.6333 | C: 662.768.2455  
John@TomSmithLand.com

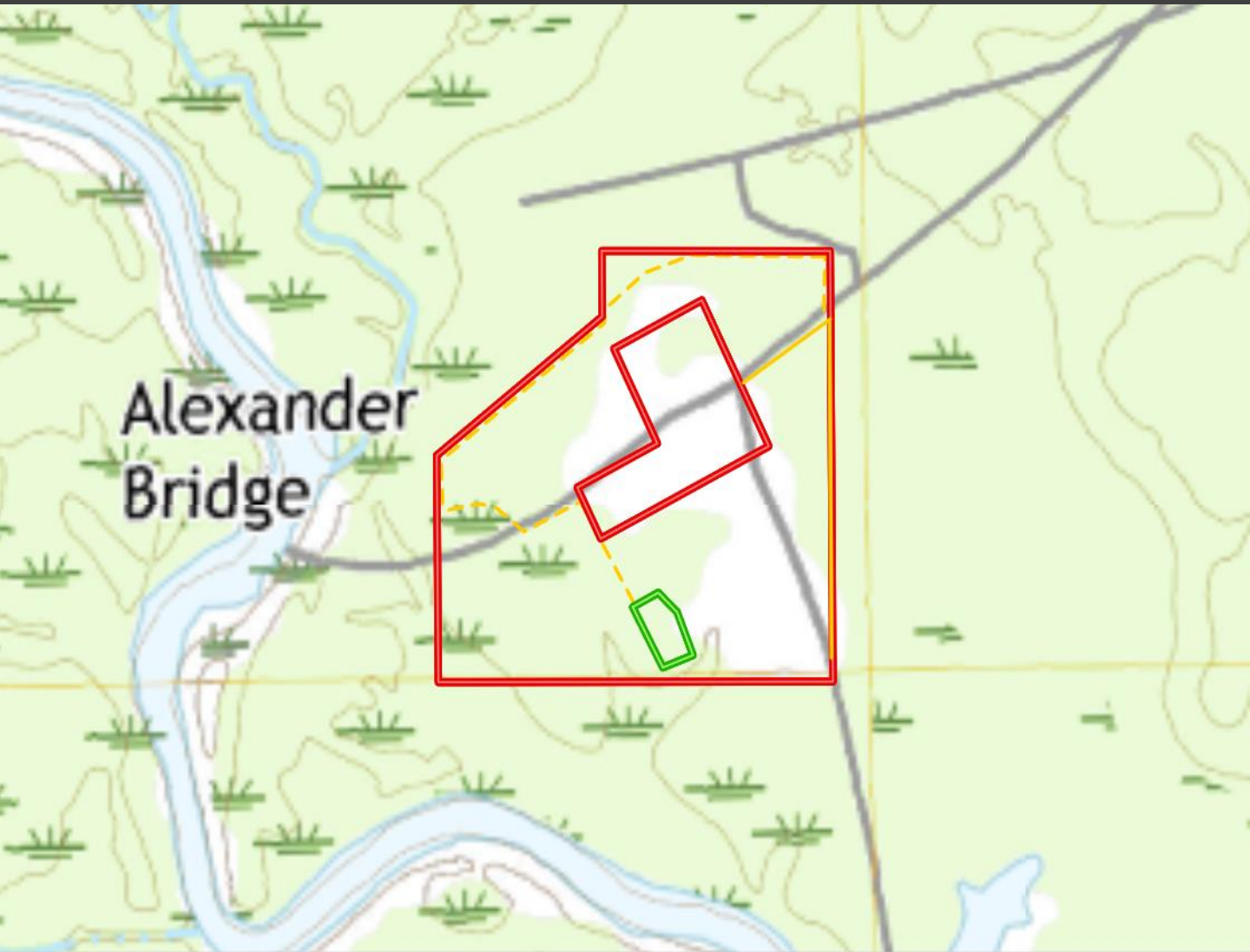
**TomSmithLandandHomes.com**

Information is believed to be accurate but not guaranteed.





# Topography Map



**WALKER TRANUM**  
REALTOR®

O: 662.268.6333 | C: 662.769.1442  
Walker@TomSmithHomes.com



Expect More. Get More.



**JOHN DELPAPA**  
REALTOR®

O: 662.268.6333 | C: 662.768.2455  
John@TomSmithLand.com

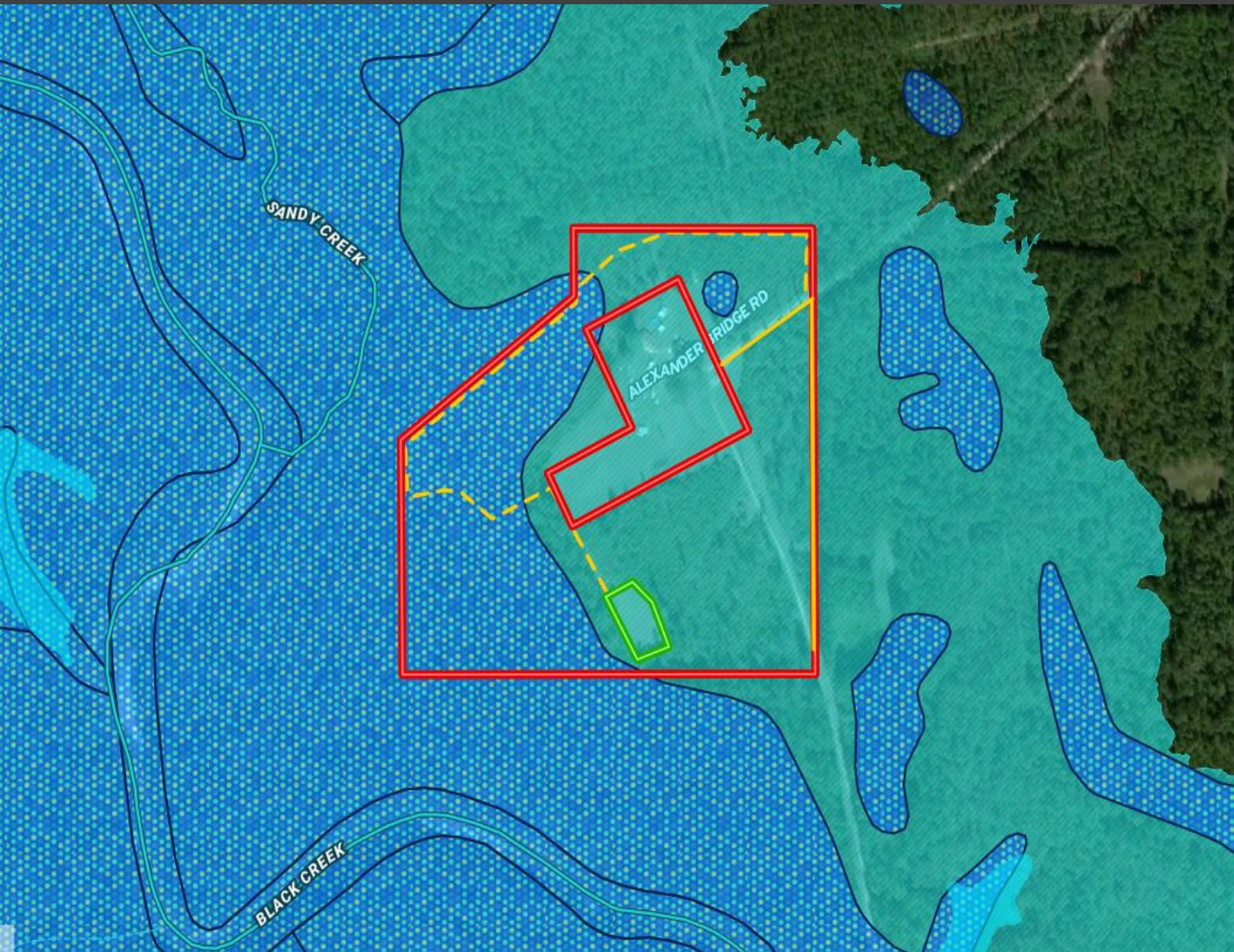
**TomSmithLandandHomes.com**

Information is believed to be accurate but not guaranteed.





# Flood Map



**WALKER TRANUM**  
REALTOR®

O: 662.268.6333 | C: 662.769.1442  
Walker@TomSmithHomes.com



Expect More. Get More.



**JOHN DELPAPA**  
REALTOR®

O: 662.268.6333 | C: 662.768.2455  
John@TomSmithLand.com

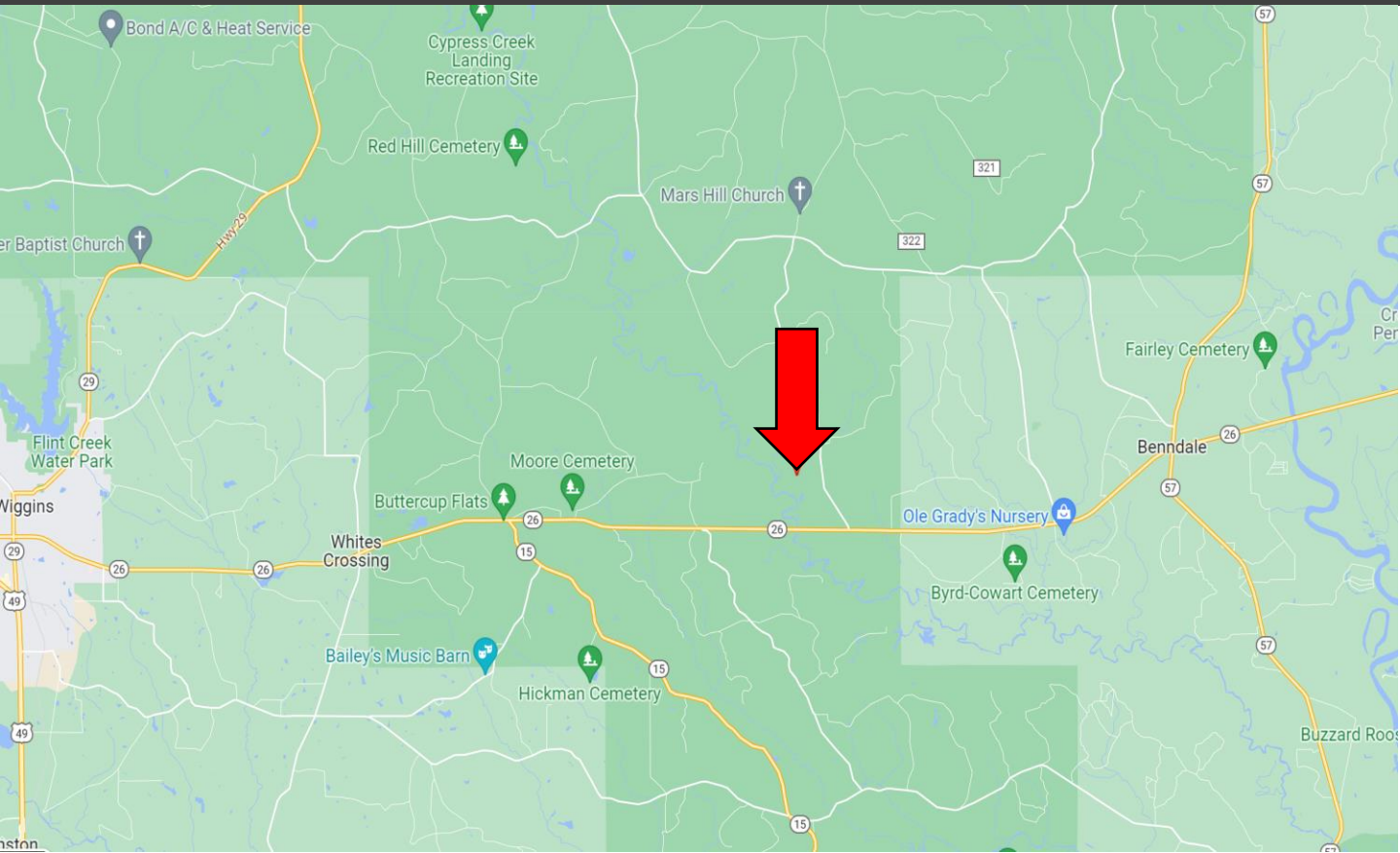
**TomSmithLandandHomes.com**

Information is believed to be accurate but not guaranteed.





# Directional Map



**Directions from Hwy 49 and Hwy 26 in Wiggins, MS:** Take the exit for Hwy 26 toward Poplarville/Lucedale. Turn left onto Hwy 26 and travel 15.5 miles. Turn left onto Deep Creek Road and travel 1.4 miles. Turn left onto Alexander Bridge Road. After .6 miles, the property will be on both sides of the road. [GOOGLE MAP LINK](#)



**WALKER TRANUM**  
REALTOR®

O: 662.268.6333 | C: 662.769.1442  
Walker@TomSmithHomes.com



**Expect More. Get More.**



**JOHN DELPAPA**  
REALTOR®

O: 662.268.6333 | C: 662.768.2455  
John@TomSmithLand.com

**TomSmithLandandHomes.com**

Information is believed to be accurate but not guaranteed.

