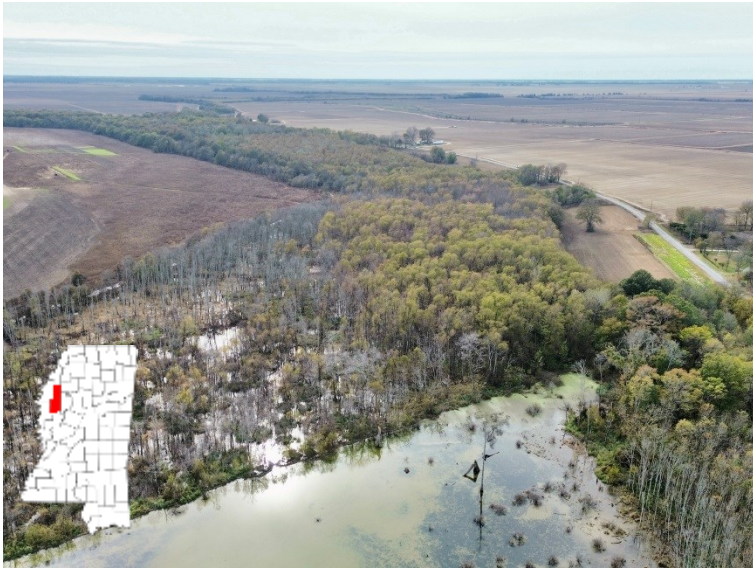


# 37+/- Acre Hunting Tract Sunflower County, MS



## 237 King Williams Road Indianola, MS 38751

This 37+/- acre tract in Sunflower County, MS, has excellent potential for both duck and dove hunting in the heart of the Mississippi Delta! Located just West of the Big Sunflower River and along the famous Mississippi Flyway, fourteen miles Southwest of Indianola! With 30+/- acres of hardwood wetlands and 7+/- acres of developed unlevelled farmland, this property is primed and ready for a bountiful hunting season! Call Emerson today for a showing!

**Directions from the intersection of Hwy 49 and Hwy 82 in Indianola, MS:** Travel South on Hwy 49 for approximately 2.2 miles. Turn right onto BB King Rd. and travel 0.7 miles. Turn left onto Wiggins Rd and travel 0.8 miles. Travel Kinlock Rd. to Bland Rd. for approximately 9.4 miles. Continue on Bland Rd to King Williams Rd. After 0.8 miles, the property will be on the right.  
[Click for Google Maps](#)



**EMERSON  
LOVELACE**

REALTOR®

Office: 662.441.2500

Cell: 601.715.3302

Emerson@TomSmithLand.com



Expect More. Get More.

**A Real Estate Expert You Can Trust**

TomSmithLandandHomes.com

Information is believed to be accurate but not guaranteed.







# A Real Estate Expert *You Can Trust!*

**EMERSON LOVELACE**  
REALTOR®

O: 662.441.2500 C: 601.715.3302  
Emerson@TomSmithLand.com

TomSmithLandandHomes.com



Expect More. Get More.



Information is believed to be accurate but not guaranteed.



# AERIAL MAP



[Click for Interactive Map](#)

**A Real Estate Expert**  
*You Can Trust!*



**EMERSON LOVELACE**  
REALTOR®

O: 662.441.2500 C: 601.715.3302  
Emerson@TomSmithLand.com

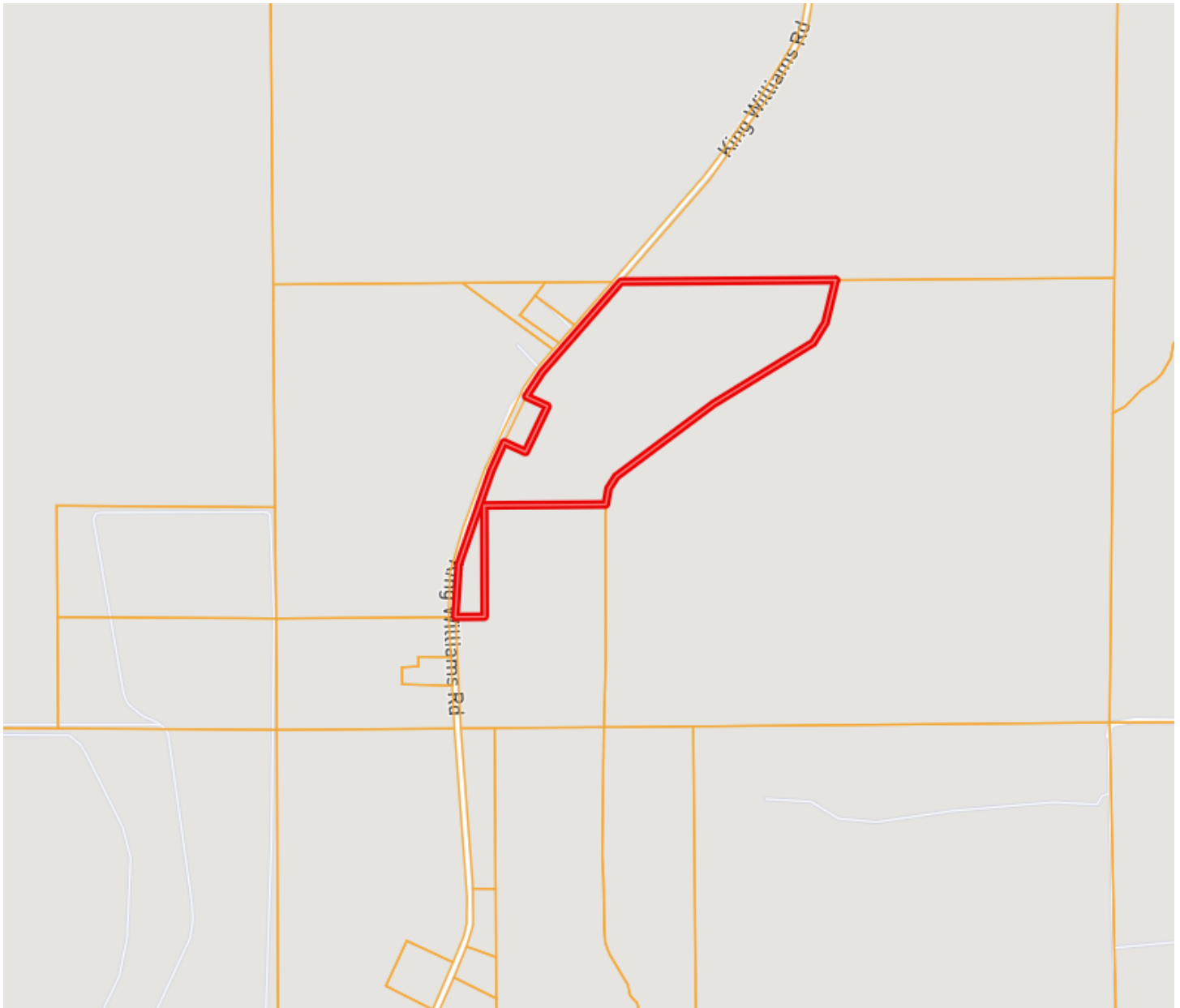
TomSmithLandandHomes.com

Expect More. Get More.



Information is believed to be accurate but not guaranteed.

# OWNERSHIP MAP



**A Real Estate Expert**  
*You Can Trust!*



**EMERSON LOVELACE**  
REALTOR®

O: 662.441.2500 C: 601.715.3302  
Emerson@TomSmithLand.com

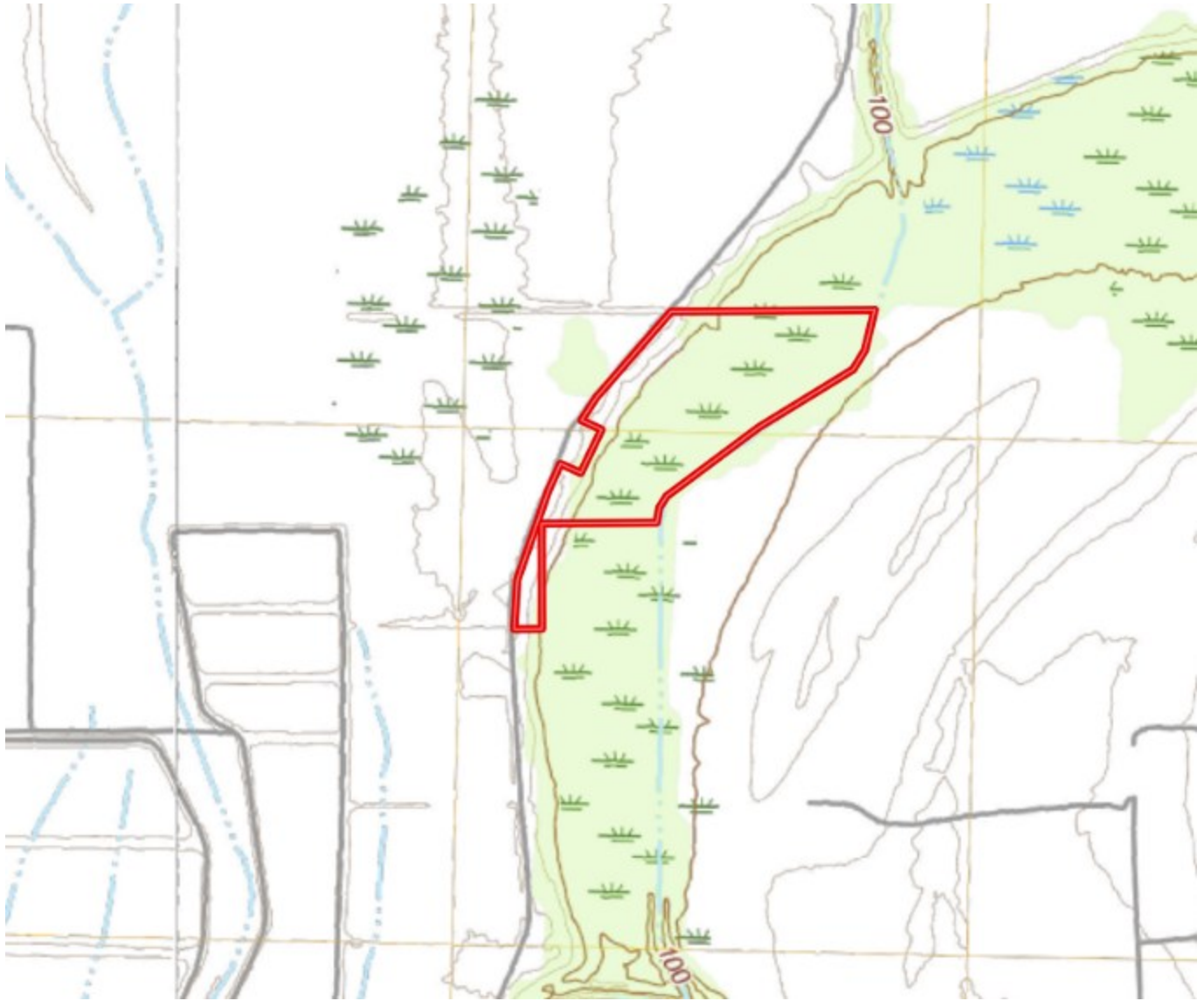
TomSmithLandandHomes.com

Expect More. Get More.



Information is believed to be accurate but not guaranteed.

# TOPO MAP



**A Real Estate Expert**  
*You Can Trust!*



**EMERSON LOVELACE**  
REALTOR®

O: 662.441.2500 C: 601.715.3302  
Emerson@TomSmithLand.com

TomSmithLandandHomes.com

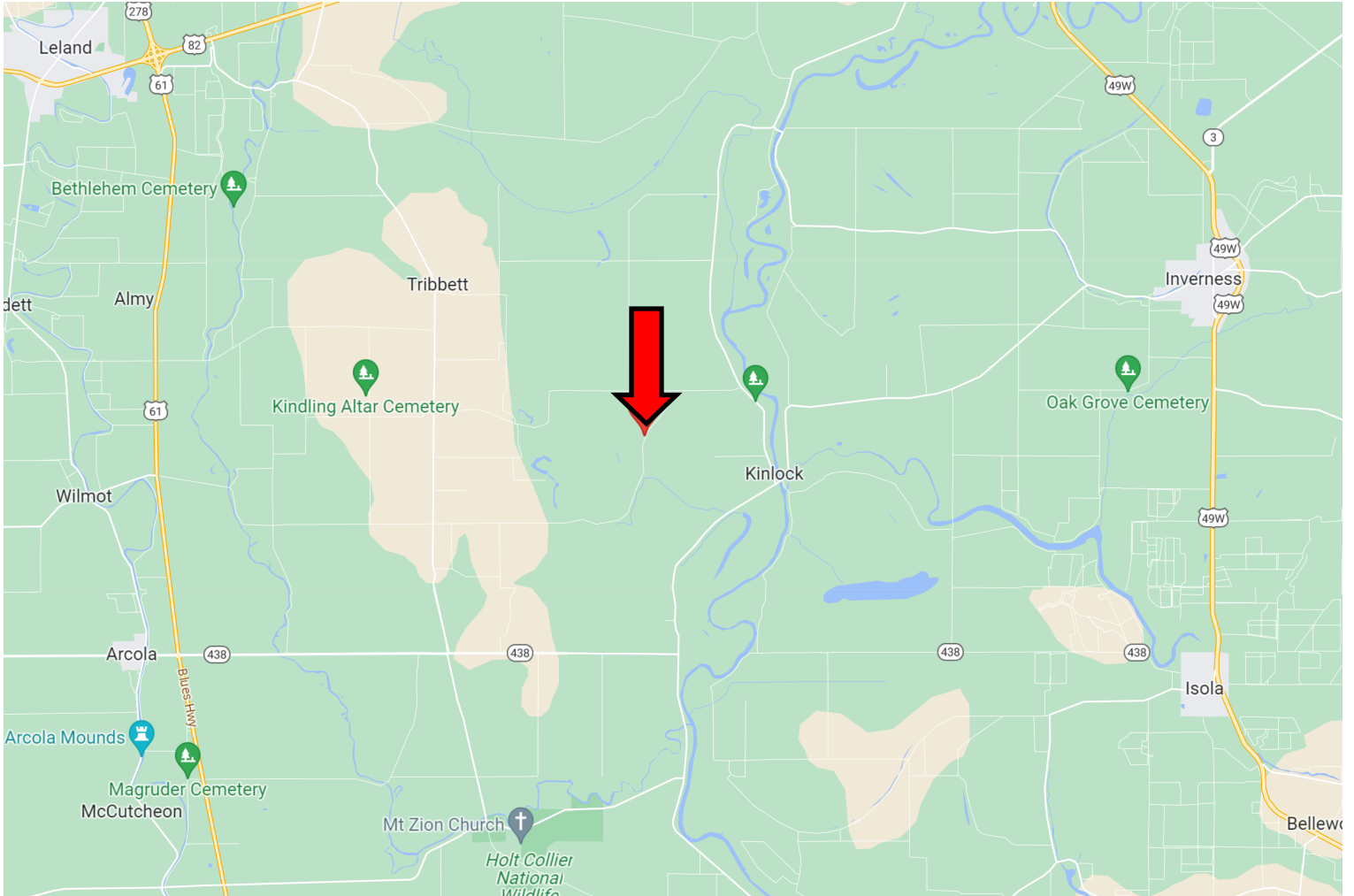
Expect More. Get More.



Information is believed to be accurate but not guaranteed.



# DIRECTIONAL MAP



**Address: 237 King Williams Road Indianola, MS 38751**

**Directions from the intersection of Hwy 49 and Hwy 82 in Indianola, MS:** Travel South on Hwy 49 for approximately 2.2 miles. Turn right onto BB King Rd. and travel 0.7 miles. Turn left onto Wiggins Rd and travel 0.8 miles. Travel Kinlock Rd. to Bland Rd. for approximately 9.4 miles. Continue on Bland Rd to King Williams Rd. After 0.8 miles, the property will be on the right. [Click for Google Maps](#)

**A Real Estate Expert  
You Can Trust!**

**EMERSON LOVELACE**  
REALTOR®

O: 662.441.2500 C: 601.715.3302

Emerson@TomSmithLand.com

TomSmithLandandHomes.com



Expect More. Get More.



Information is believed to be accurate but not guaranteed.