

533 OVERSTREET DRIVE

Oktibbeha County, MS



\$179,999

Here is a charming two bed one bath home in Oktibbeha County, Starkville, MS. This house is sitting .02+/- acres and is only minutes from Mississippi State University. Recent cosmetic upgrades have been completed, from exterior and interior painting a new post on the front porch, and much more! This house also has a good-sized backyard where dogs can stretch their legs. This home is perfect for college students moving to town and looking for a place close to campus. It could also be easily used as a rental for that extra income stream. To schedule a private showing, call or text Walker!

Directions From Mississippi State University: Leaving Mississippi State University, take Burney Road/ Creelman Street and Stone Boulevard to MS-12 East in Starkville, MS for .8 miles. Then continue on MS-12 East and take MS-182 West/ Dr Martin Luther King Jr Drive East to Critz Street for 1.9 miles. Then follow Critz Street to Overstreet Drive for .4 miles. The house will be on your right.



**WALKER
TRANUM**
REALTOR®

Office: 662.268.6333

Cell: 662.769.1442

Walker@TomSmithHomes.com



A Real Estate Expert You Can Trust

TomSmithLandandHomes.com

Information is believed to be accurate but not guaranteed.





**WALKER
TRANUM**
REALTOR®

Office: 662.268.6333

Cell: 662.769.1442

Walker@TomSmithHomes.com



A Real Estate Expert You Can Trust

TomSmithLandandHomes.com

Information is believed to be accurate but not guaranteed.





**WALKER
TRANUM**
REALTOR®

Office: 662.268.6333

Cell: 662.769.1442

Walker@TomSmithHomes.com

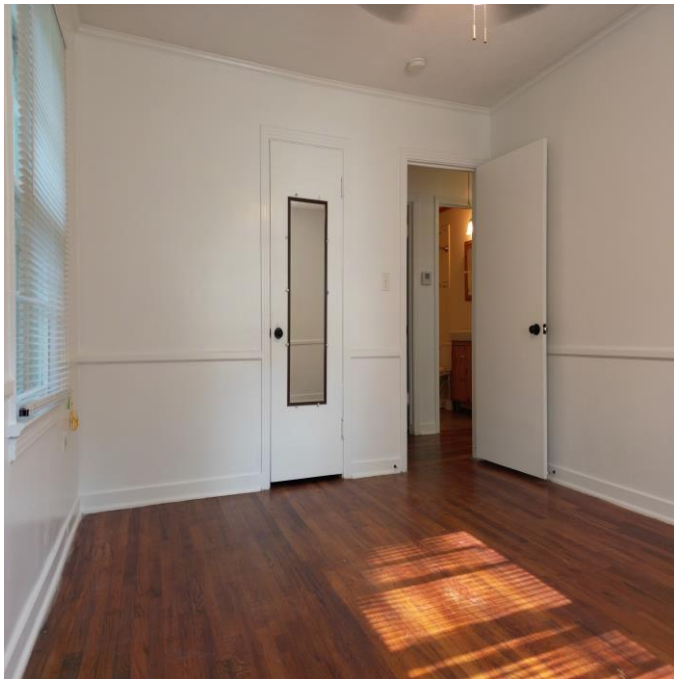


A Real Estate Expert You Can Trust

TomSmithLandandHomes.com

Information is believed to be accurate but not guaranteed.





**WALKER
TRANUM**
REALTOR®

Office: 662.268.6333

Cell: 662.769.1442

Walker@TomSmithHomes.com



A Real Estate Expert You Can Trust

TomSmithLandandHomes.com

Information is believed to be accurate but not guaranteed.



Aerial Map



Click [Here](#) for Interactive Link



**WALKER
TRANUM**
REALTOR®

Office: 662.268.6333

Cell: 662.769.1442

Walker@TomSmithHomes.com



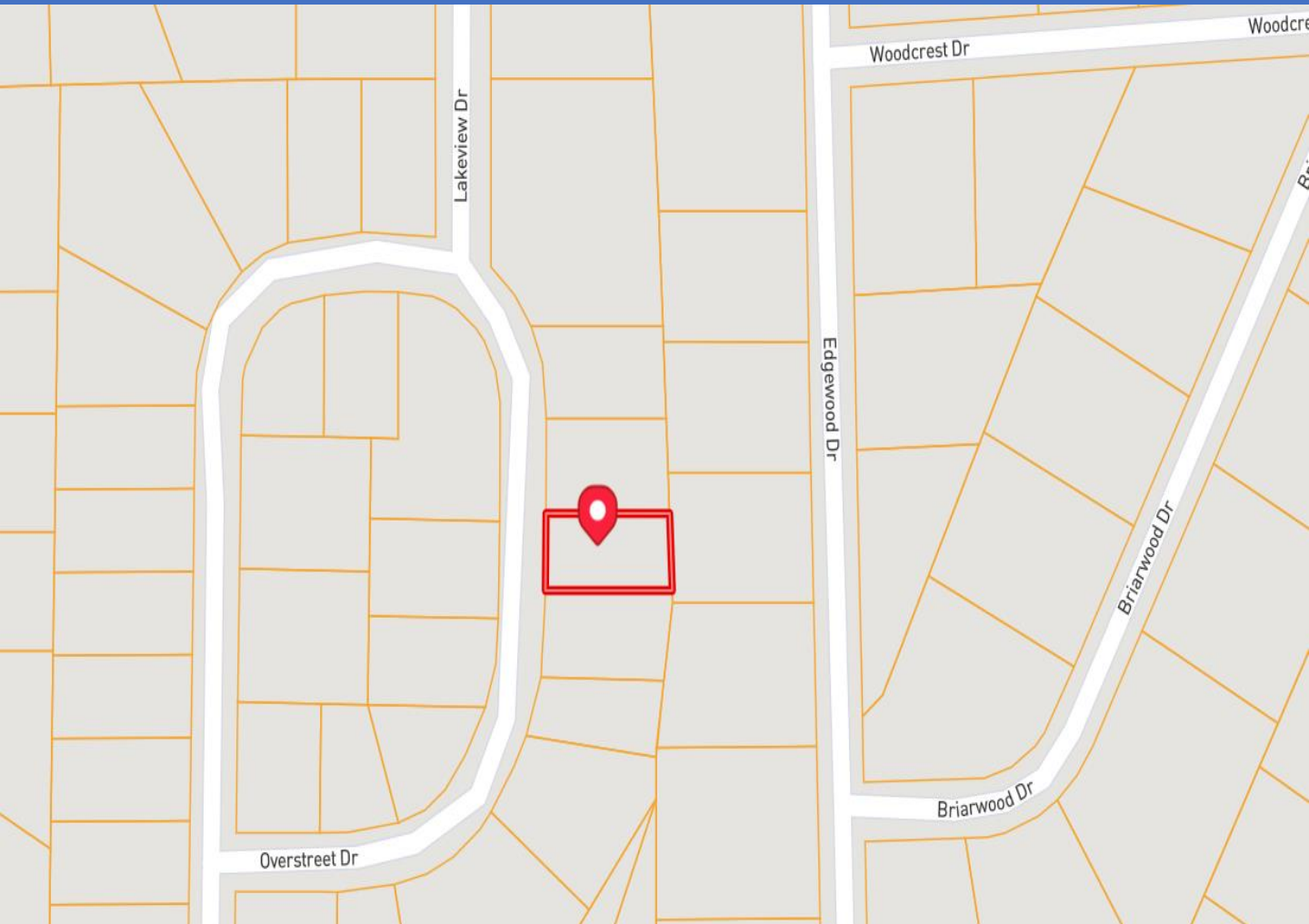
A Real Estate Expert You Can Trust

TomSmithLandandHomes.com

Information is believed to be accurate but not guaranteed.



Ownership Map



**WALKER
TRANUM**
REALTOR®

Office: 662.268.6333
Cell: 662.769.1442

Walker@TomSmithHomes.com



A Real Estate Expert You Can Trust

TomSmithLandandHomes.com

Information is believed to be accurate but not guaranteed.



Flood Map



**WALKER
TRANUM**
REALTOR®

Office: 662.268.6333
Cell: 662.769.1442

Walker@TomSmithHomes.com



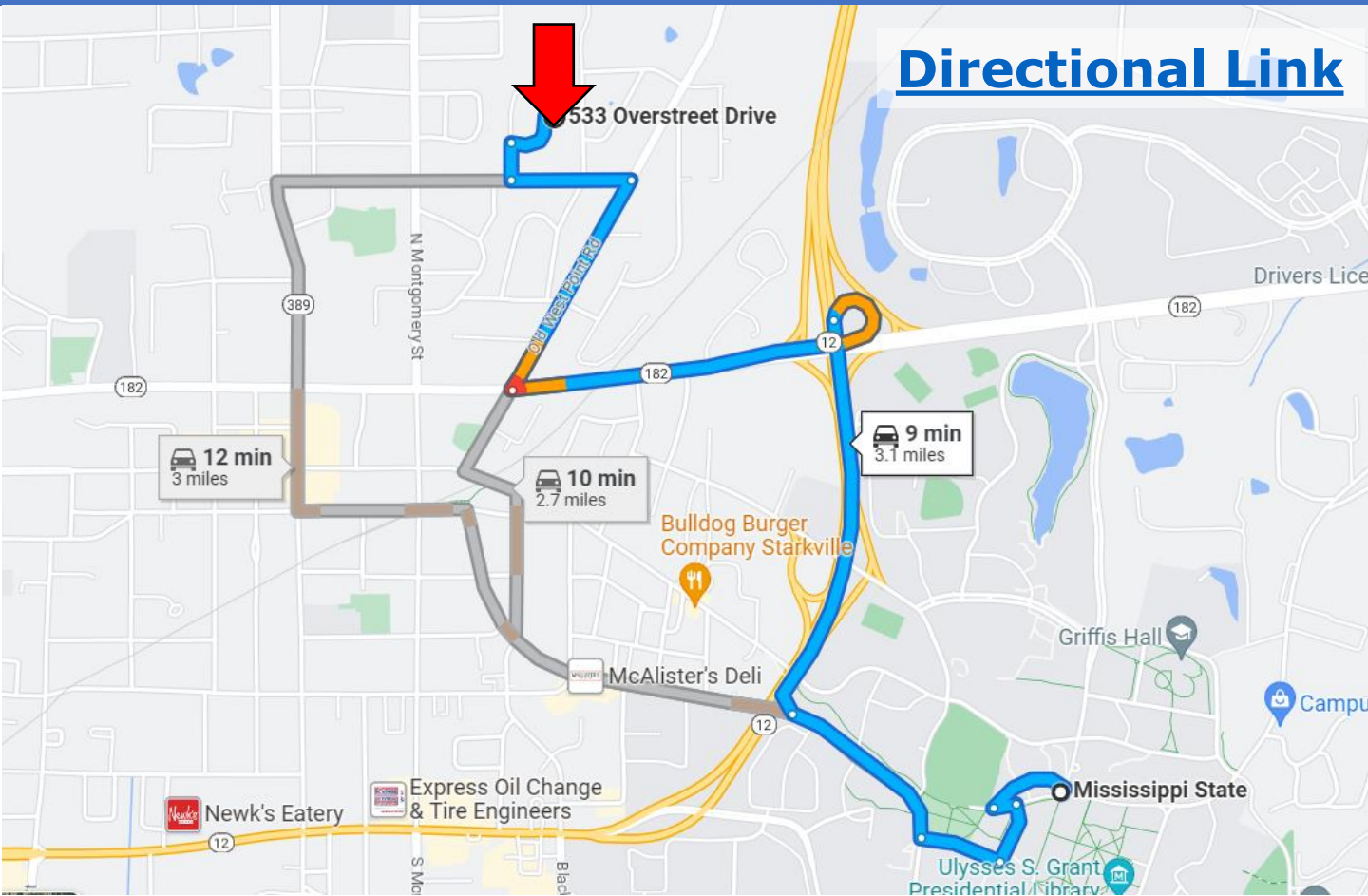
A Real Estate Expert You Can Trust

TomSmithLandandHomes.com

Information is believed to be accurate but not guaranteed.



Directional Map



Directions From Mississippi State University: Leaving Mississippi State University, take Burney Road/ Creelman Street and Stone Boulevard to MS-12 East in Starkville, MS for .8 miles. Then continue on MS-12 East and take MS-182 West/ Dr Martin Luther King Jr Drive East to Critz Street for 1.9 miles. Then follow Critz Street to Overstreet Drive for .4 miles. The house will be on your right.



**WALKER
TRANUM**
REALTOR®

Office: 662.268.6333
Cell: 662.769.1442

Walker@TomSmithHomes.com



A Real Estate Expert You Can Trust

TomSmithLandandHomes.com

Information is believed to be accurate but not guaranteed.

2011-2023
**BEST
BROKERAGES**