



Investment Property

Bolivar County, MS

802 Deering St. Cleveland, MS 38732



\$105,000

This Bolivar County home is 925 sq ft with two bedrooms, one bath and is located close to Delta State University. This investment property is currently being rented out for \$1150/month and is renter-occupied. The entire home has been completely renovated from top to bottom! Excellent investment at a great price! Call Sarah Reese for your private showing today! (662)441-2500 or (662)641-6696.

Directions from the intersection of Hwy 8 and Hwy 61 Cleveland, MS: Travel West on Hwy 8 for approximately 1.0 mile. Turn left on North 5th Ave, in 0.7 miles turn left onto Deering Street. After 0.1 miles, the house will be on the left. [Click for Google Maps.](#)

Call me today!

SARAH-REESE WRIGHT, REALTOR®
SarahReese@TomSmithLand.com
662.441.2500 **office** | 662.641.6696 **cell**



TomSmithLandandHomes.com

Information is believed to be accurate but not guaranteed.



Call me today!

SARAH-REESE WRIGHT, REALTOR®
 SarahReese@TomSmithLand.com
 662.441.2500 office | 662.641.6696 cell



TomSmithLandandHomes.com

Information is believed to be accurate but not guaranteed.



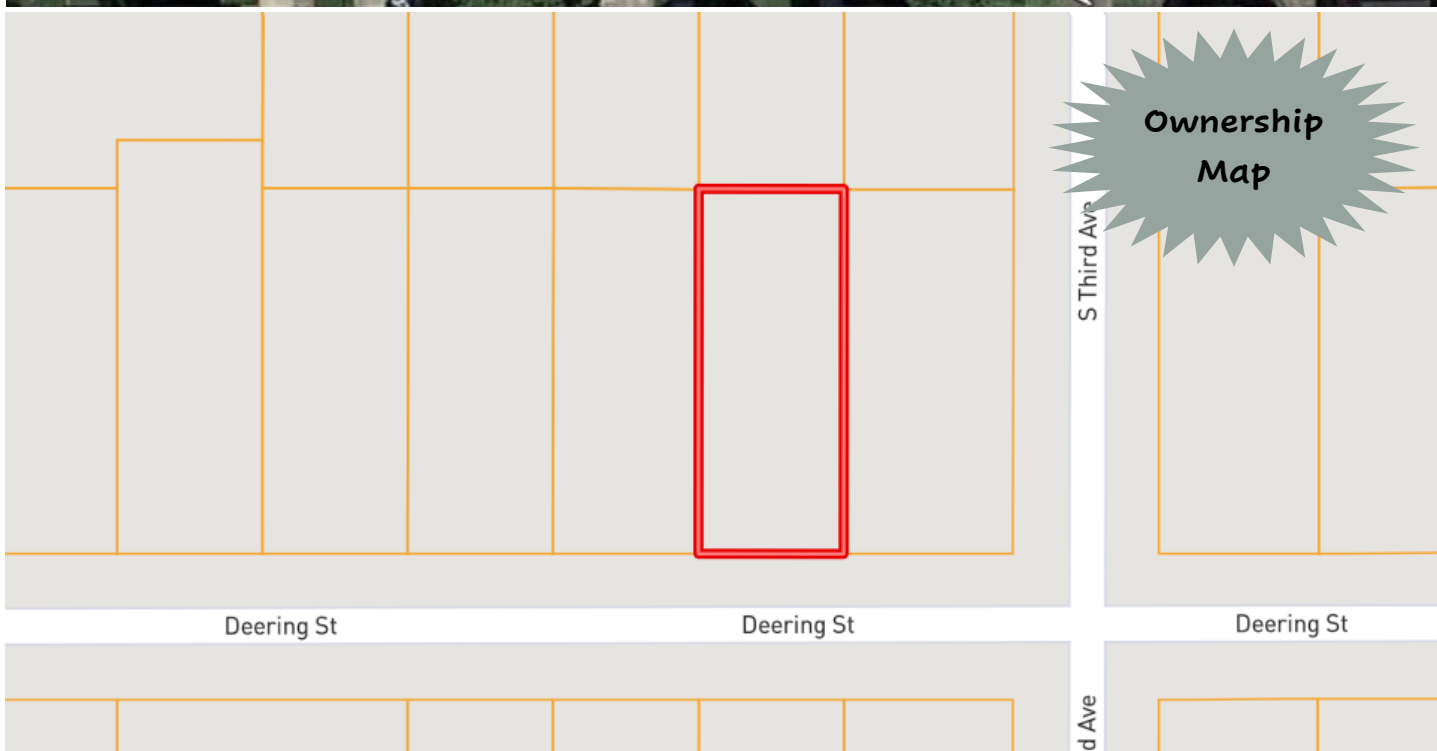
*Call me
today!*

SARAH-REESE WRIGHT, REALTOR®
 SarahReese@TomSmithLand.com
 662.441.2500 office | 662.641.6696 cell



TomSmithLandandHomes.com

Information is believed to be accurate but not guaranteed.



[Click for Interactive Map](#)

Call me today!

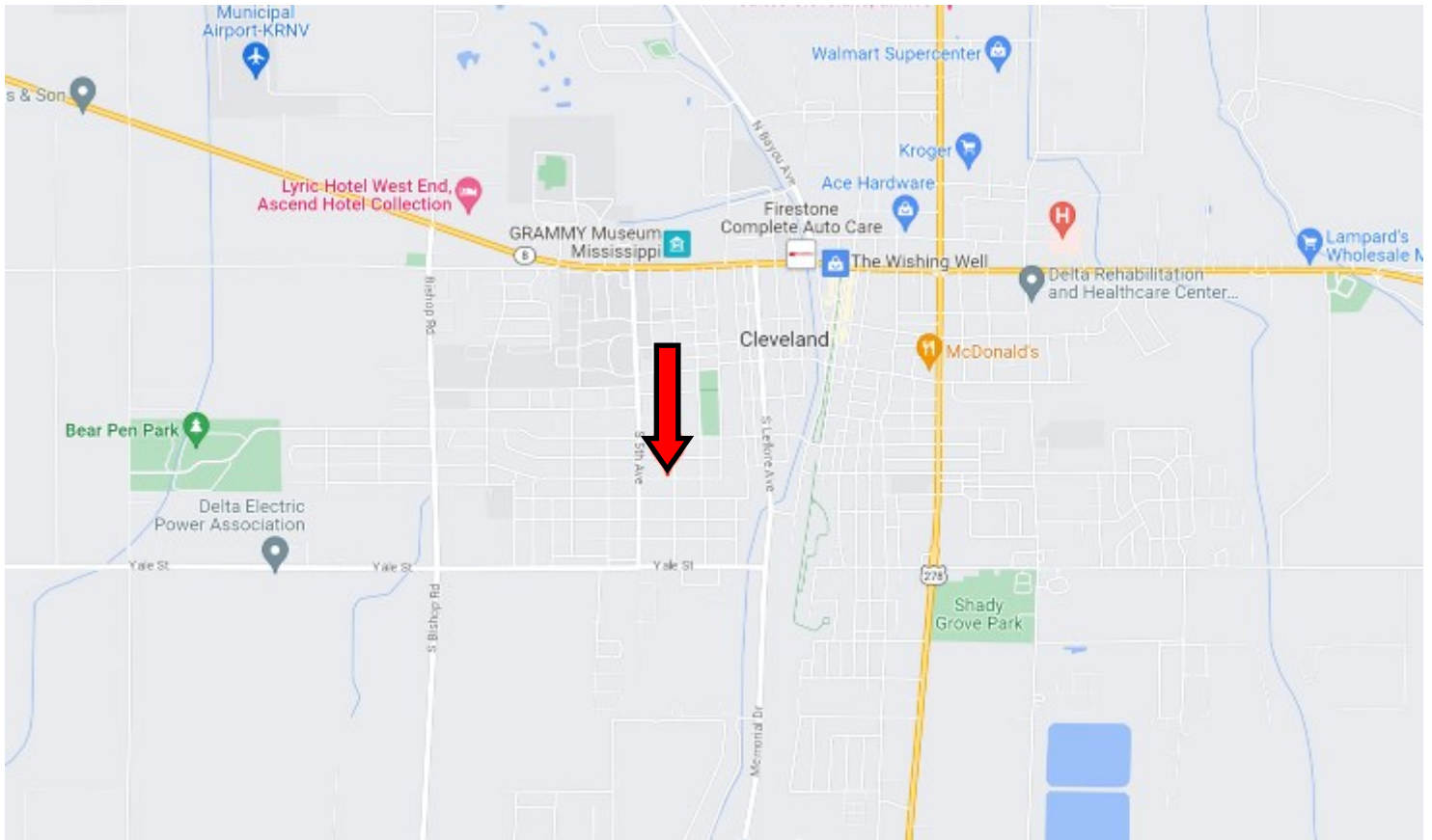
SARAH-REESE WRIGHT, REALTOR®
 SarahReese@TomSmithLand.com
 662.441.2500 office | 662.641.6696 cell



TomSmithLandandHomes.com

Information is believed to be accurate but not guaranteed.

DIRECTIONAL MAP



802 Deering Street Cleveland, MS 38732

Directions from the intersection of Hwy 8 and Hwy 61 Cleveland, MS: Travel West on Hwy 8 for approximately 1.0 mile. Turn left on North 5th Ave, in 0.7 miles turn left onto Deering Street. After 0.1 mile, the house will be on the left.

[Click for Google Maps](#)



Call me today!

SARAH-REESE WRIGHT, REALTOR®
SarahReese@TomSmithLand.com
662.441.2500 **office** | 662.641.6696 **cell**



TomSmithLandandHomes.com

Information is believed to be accurate but not guaranteed.