

5.47± Acre Residential Lot Marshall County, MS



\$46,500

This 5.47± acre Marshall County, MS lot is located just off Hwy 178 on Waites Road between Holly Springs and Lake Center near Interstate 22. It has been partially cleared and is accessed with a written graveled easement. Zoning permits mobile homes. Call Tom today!!

Directions from Hwy 7 and Van Dorn Ave/Hwy 178 on the Square in Holly Springs, MS: Travel Van Dorn Avenue/Hwy 178 east five miles to Waites Road. Turn left and travel ¼ mile. The driveway will be on the left. [GOOGLE MAP LINK](#)



**TOM
WISEMAN**

ASSOCIATE BROKER

Office: 662.268.6333

Cell: 662.317.0467

TWiseman@TomSmithLand.com



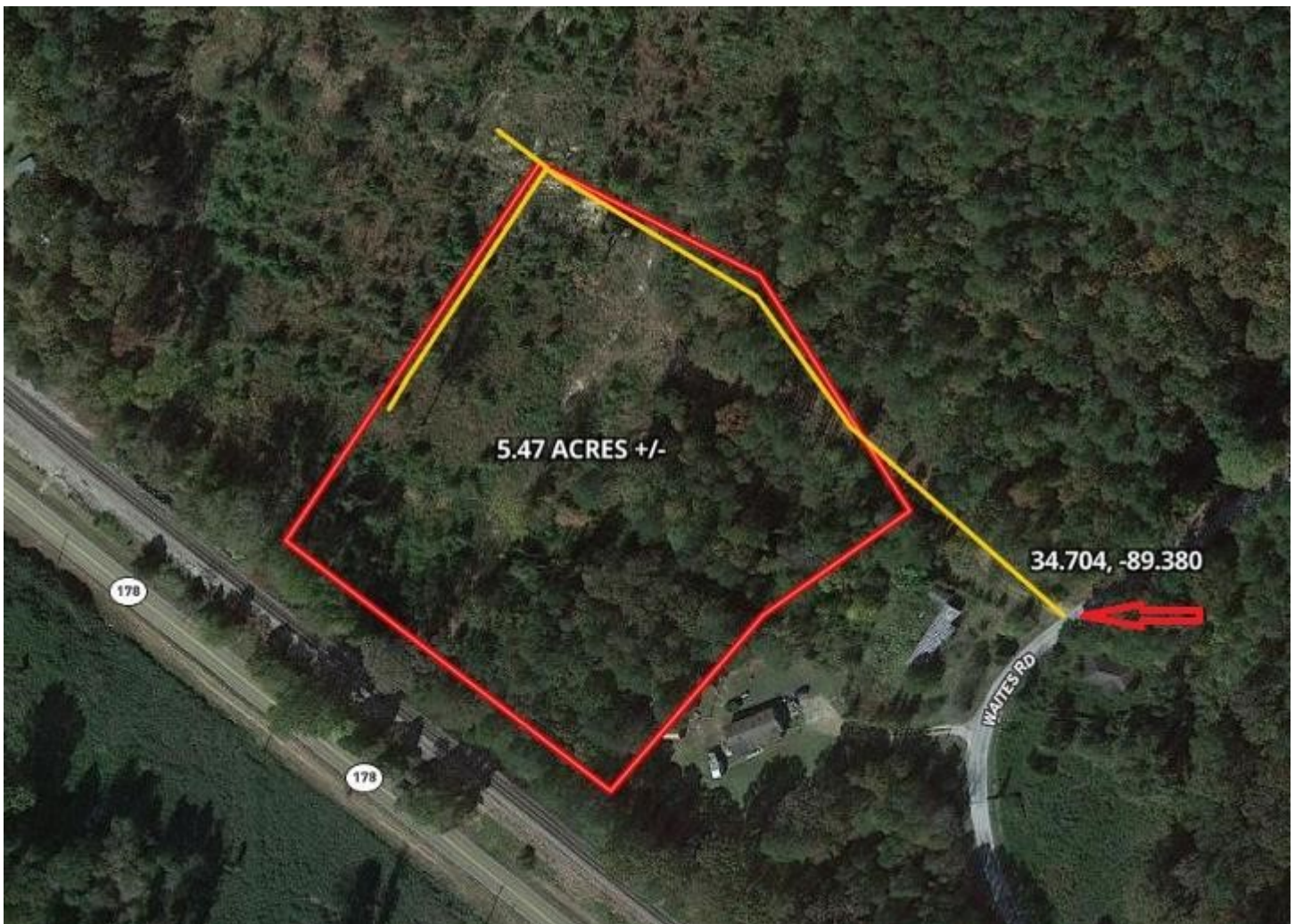
A Real Estate Expert You Can Trust

TomSmithLandandHomes.com

Information is believed to be accurate but not guaranteed.



AERIAL MAP



CLICK [HERE](#) FOR INTERACTIVE LINK

TOM WISEMAN
ASSOCIATE BROKER
Office: 662.268.6333
Cell: 662.317.0467
TWiseman@TomSmithLand.com



A Real Estate Expert You Can Trust
TomSmithLandandHomes.com

Information is believed to be accurate but not guaranteed.



OWNERSHIP MAP



TOM WISEMAN

ASSOCIATE BROKER

Office: 662.268.6333

Cell: 662.317.0467

TWiseman@TomSmithLand.com



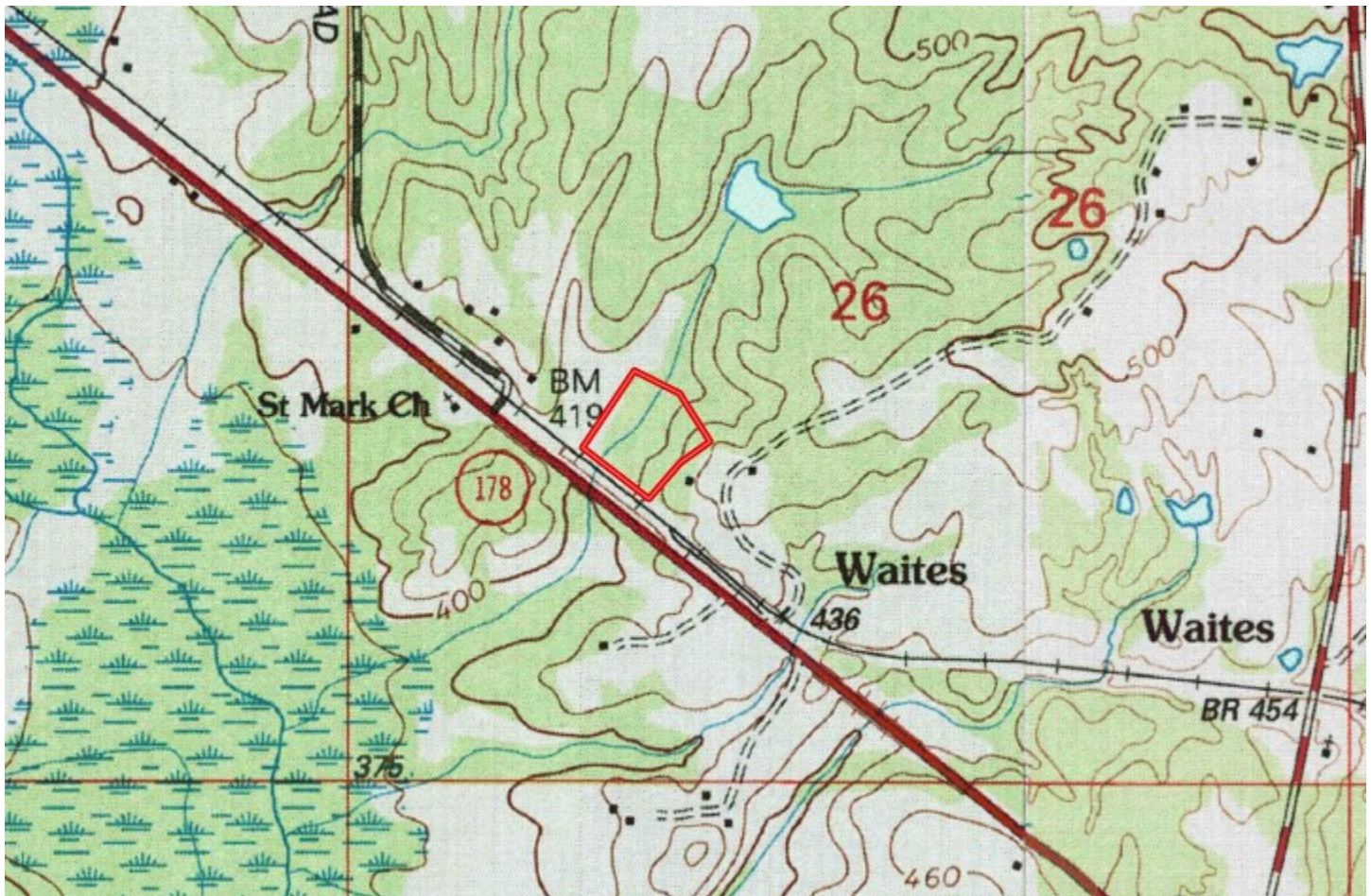
A Real Estate Expert You Can Trust

TomSmithLandandHomes.com

Information is believed to be accurate but not guaranteed.



TOPO MAP



TOM WISEMAN

ASSOCIATE BROKER

Office: 662.268.6333

Cell: 662.317.0467

TWiseman@TomSmithLand.com



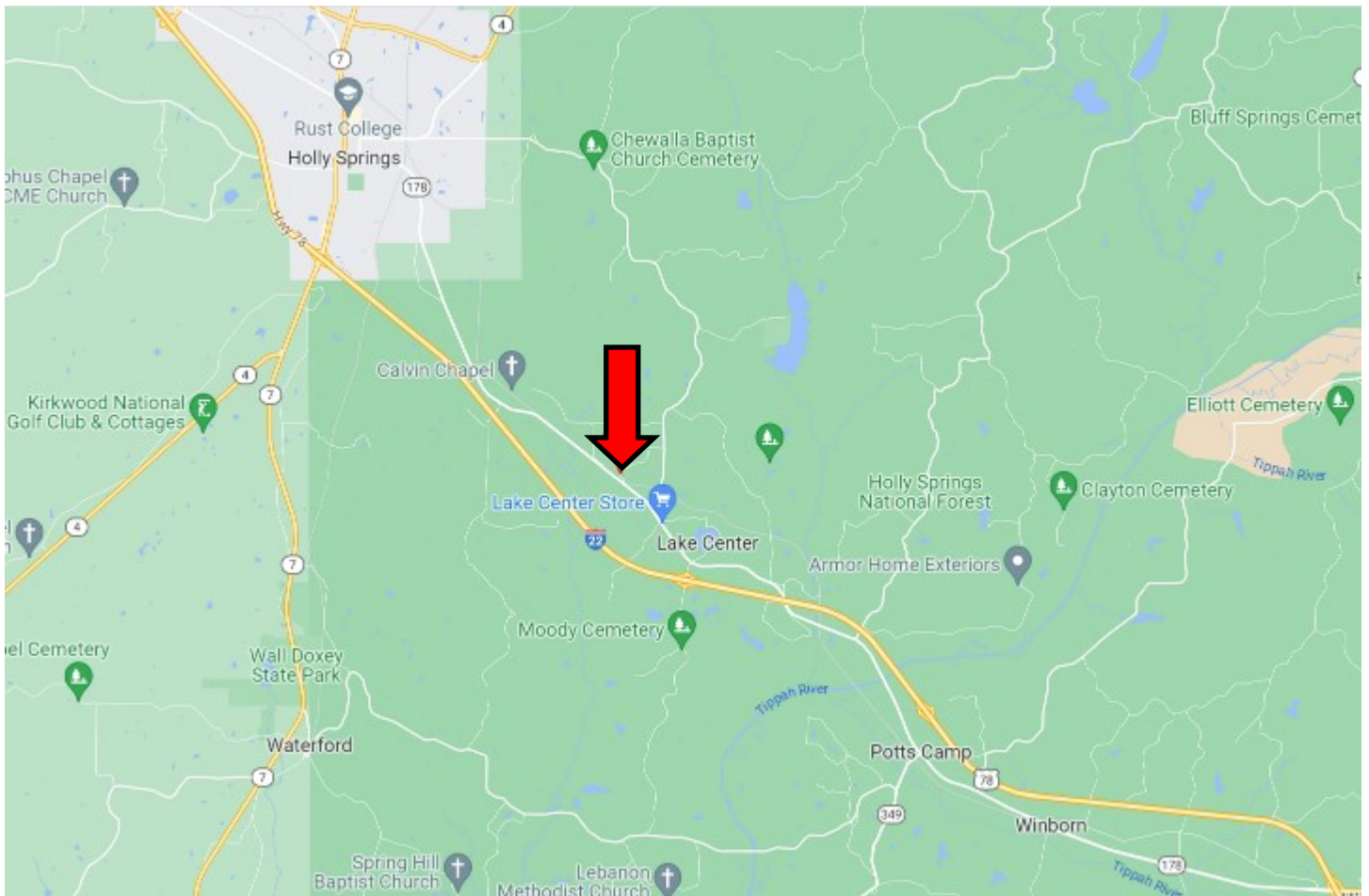
A Real Estate Expert You Can Trust

TomSmithLandandHomes.com

Information is believed to be accurate but not guaranteed.



DIRECTIONAL MAP



Directions from Hwy 7 and Van Dorn Ave/Hwy 178 on the Square in Holly Springs, MS:
Travel Van Dorn Avenue/Hwy 178 east five miles to Waites Road. Turn left and travel
¼ mile. The driveway will be on the left. [GOOGLE MAP LINK](#)



TOM
WISEMAN

ASSOCIATE BROKER

Office: 662.268.6333

Cell: 662.317.0467

TWiseman@TomSmithLand.com



A Real Estate Expert You Can Trust

TomSmithLandandHomes.com

Information is believed to be accurate but not guaranteed.

