

3BR/2BATH HOME ON 1.9+/- ACRES IN CALHOUN COUNTY, MISSISSIPPI



444 Highway 9, Calhoun City, MS 38916

\$129,500

Welcome to this 3-bedroom, 2-bath brick home in Calhoun County on 1.9 +/- acres! The house has a detached one-car garage and a partially paved driveway for convenience. The property also has a nice backyard and a pond in the front yard, and its proximity to Calhoun City Square ensures easy access to amenities while enjoying a peaceful living experience. Give Jami a call to schedule your showing today!



JAMI
PRUITT
REALTOR®

Office: 662.268.6333

Cell: 662.858.0608

Jami@TomSmithHomes.com



Expect More. Get More.

A Real Estate Expert You Can Trust

TomSmithLandandHomes.com

Information is believed to be accurate but not guaranteed.





Flooding occurred in 2021, and the carpet and baseboard strips were removed, and the concrete was professionally cleaned. This home is now ready for new flooring.

JAMI PRUITT
 REALTOR®
 Office: 662.268.6333
 Cell: 662.858.0608
 Jami@TomSmithHomes.com



A Real Estate Expert You Can Trust
 TomSmithLandandHomes.com

Information is believed to be accurate but not guaranteed.





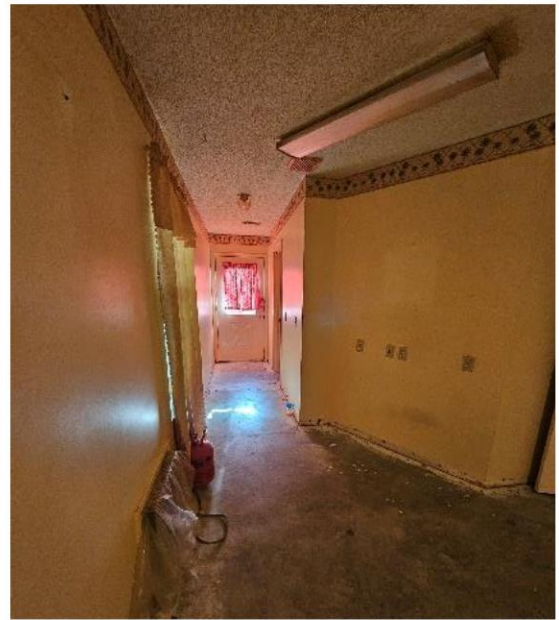
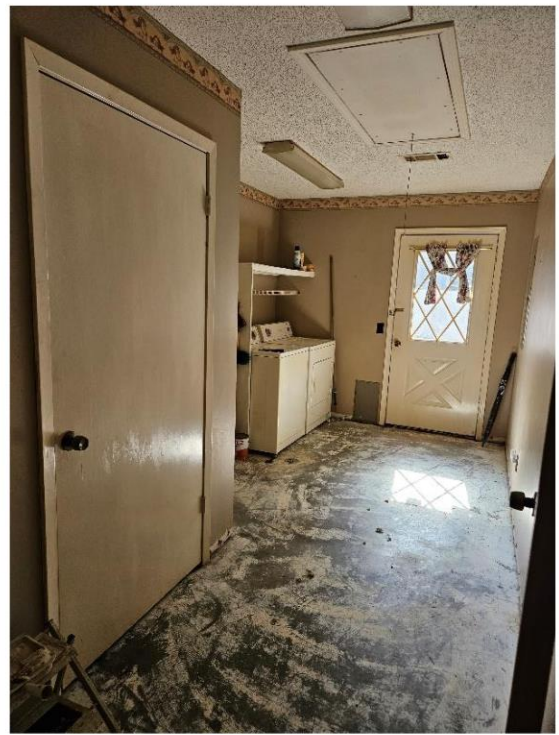
JAMI PRUITT
 REALTOR®
 Office: 662.268.6333
 Cell: 662.858.0608
 Jami@TomSmithHomes.com



A Real Estate Expert You Can Trust
 TomSmithLandandHomes.com

Information is believed to be accurate but not guaranteed.





JAMI PRUITT
 REALTOR®
 Office: 662.268.6333
 Cell: 662.858.0608
 Jami@TomSmithHomes.com



A Real Estate Expert You Can Trust
 TomSmithLandandHomes.com

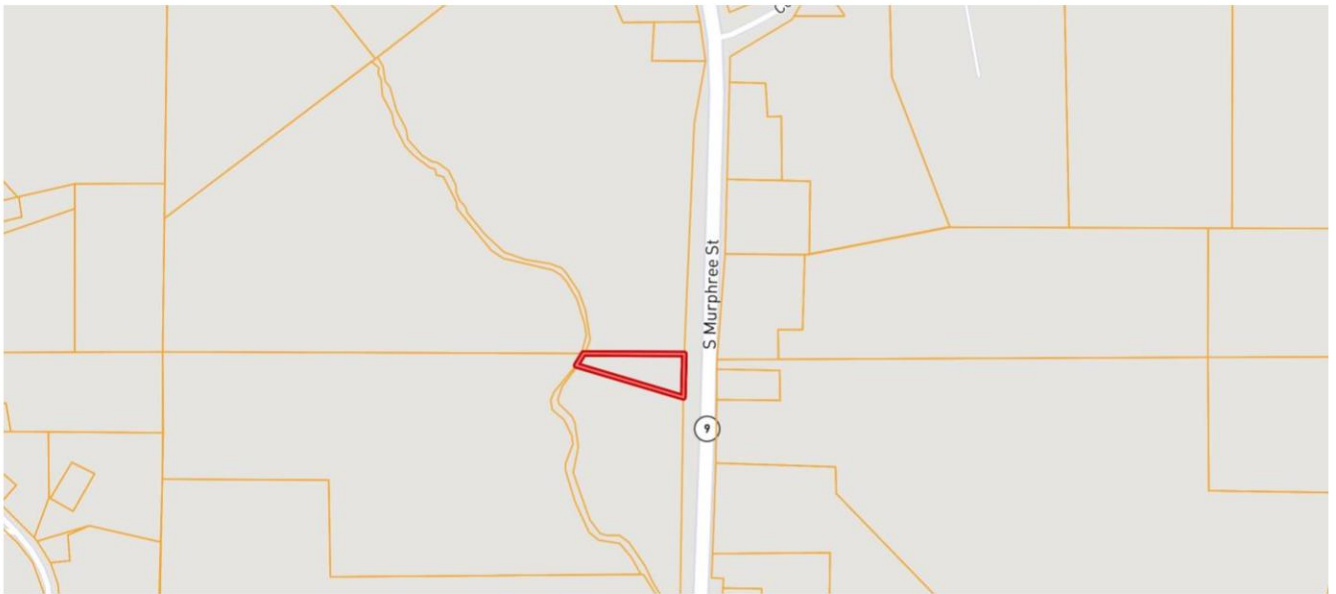
Information is believed to be accurate but not guaranteed.



AERIAL MAP



OWNERSHIP MAP



[CLICK HERE FOR AN INTERACTIVE MAP](#)

JAMI PRUITT
REALTOR®

Office: 662.268.6333

Cell: 662.858.0608

Jami@TomSmithHomes.com



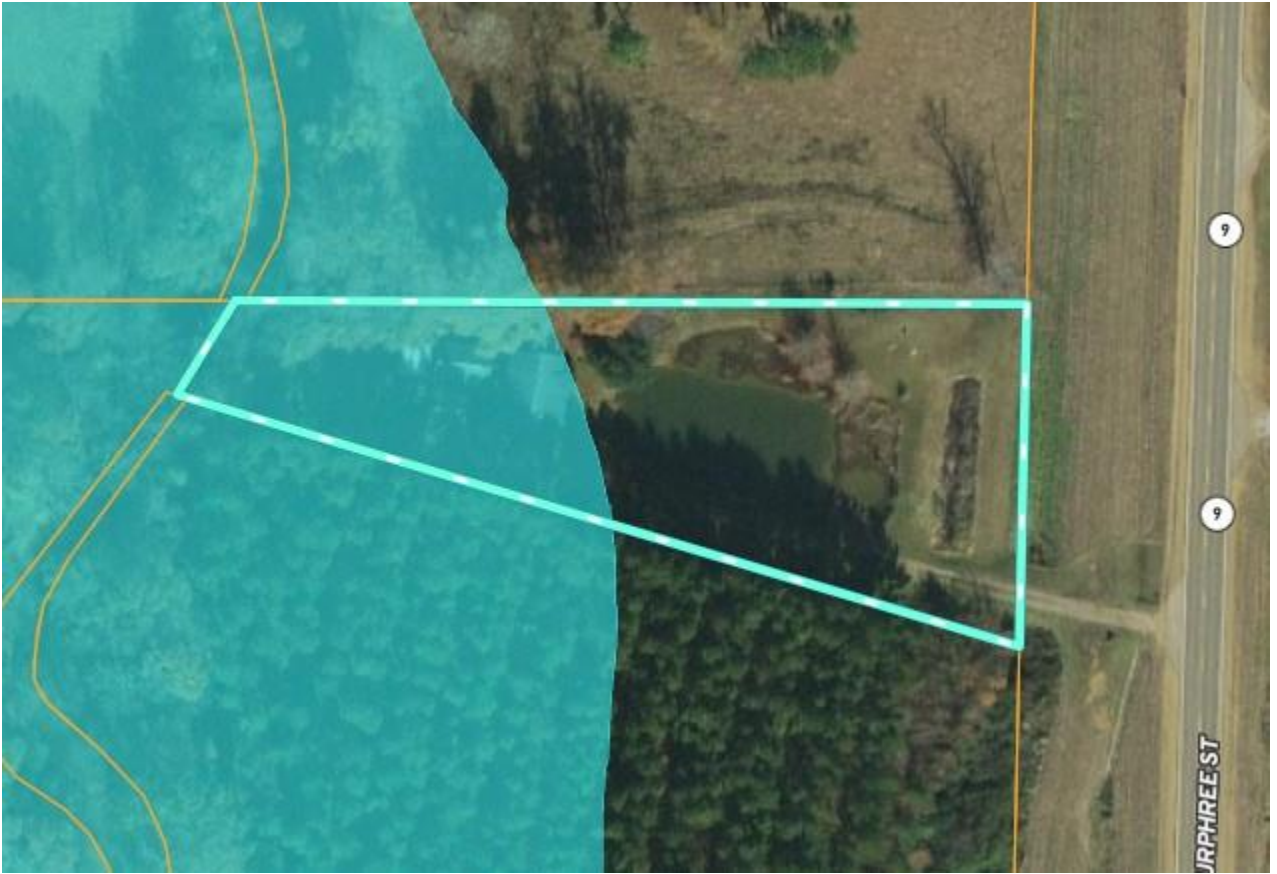
A Real Estate Expert You Can Trust

TomSmithLandandHomes.com

Information is believed to be accurate but not guaranteed.



FEMA FLOODPLAIN MAP



JAMI PRUITT
REALTOR®

Office: 662.268.6333

Cell: 662.858.0608

Jami@TomSmithHomes.com

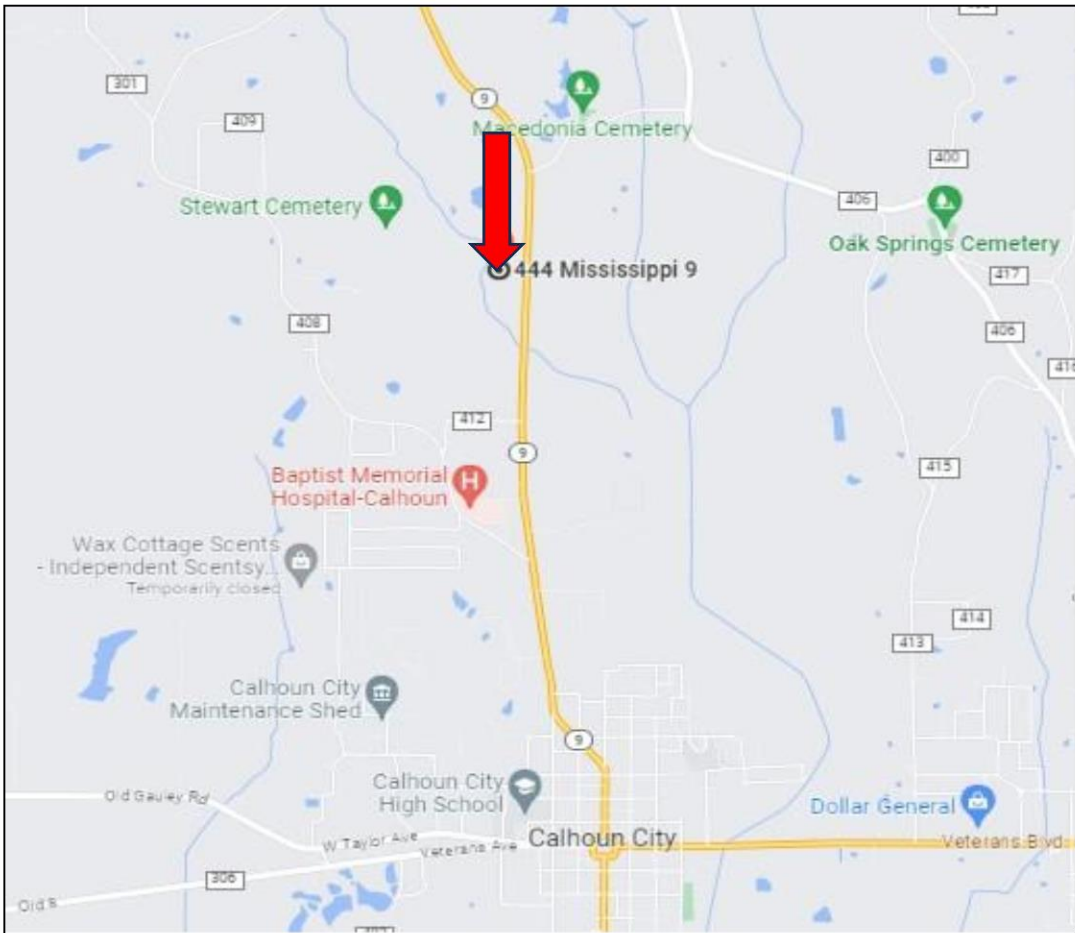


A Real Estate Expert You Can Trust
TomSmithLandandHomes.com

Information is believed to be accurate but not guaranteed.



DIRECTIONAL MAP



Directions from intersection of Hwy 9 and Veterans Blvd in Calhoun City,

MS: Travel Hwy 9 N for 2 miles. The property will be on your left.

[444 Hwy 9 Calhoun City, MS 38916 – Click for Directions](#)



JAMI
PRUITT
REALTOR®

Office: 662.268.6333

Cell: 662.858.0608

Jami@TomSmithHomes.com



A Real Estate Expert You Can Trust

TomSmithLandandHomes.com

Information is believed to be accurate but not guaranteed.

