

Charming Hollandale Home

303 Oak Court Hollandale, MS 38748
Washington County, MS



\$135,000

Take a look at this charming 4-bedroom, 2-bath home on a quiet street in Hollandale, in Washington County, MS. The 1,860 sf house is located on an approximately .52 acre lot and features a new roof, hardwood floors in the living area, and tiled kitchen and bathroom. A comfortable living room and a dining area offer a perfect gathering setting. The fenced backyard has a covered patio, creating the ideal relaxation spot. With its abundant potential, this residence holds promise as a perfect home for any family.

Directions from Hwy 12 and Hwy 61 in Hollandale, MS: Travel West on Hwy 12 for .8 miles. Turn right onto East Ave and travel 1 mile. Turn right onto Magnolia Street for .2 miles and then turn left onto Oak Ct. The house is the second home on the right. [Google Map Link](#)



**BRUCE
WEST**
REALTOR®

Office: 662.441.2500

Cell: 662.873.3007

Bruce@TomSmithLand.com



A Real Estate Expert You Can Trust

TomSmithLandandHomes.com

Information is believed to be accurate but not guaranteed.





BRUCE WEST
REALTOR®
Office: 662.441.2500
Cell: 662.873.3007
Bruce@TomSmithLand.com



A Real Estate Expert You Can Trust
TomSmithLandandHomes.com

Information is believed to be accurate but not guaranteed.





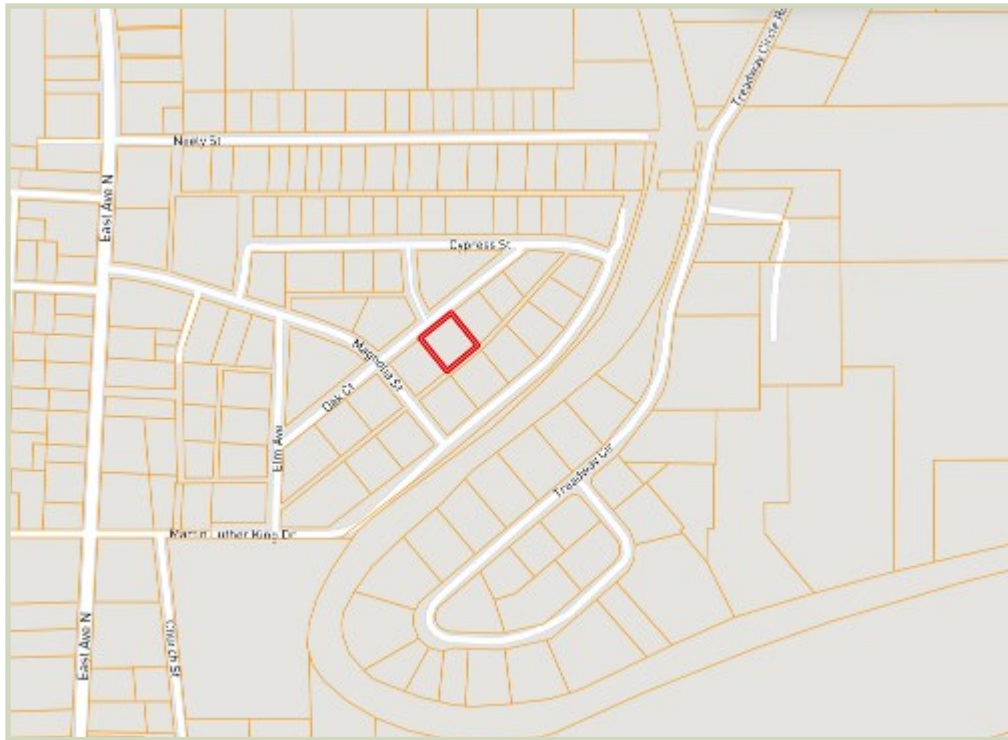
BRUCE WEST
 REALTOR®
 Office: 662.441.2500
 Cell: 662.873.3007
 Bruce@TomSmithLand.com



A Real Estate Expert You Can Trust
 TomSmithLandandHomes.com

Information is believed to be accurate but not guaranteed.





Ownership Map



Aerial Map

[Click Here for an
Interactive Map](#)

BRUCE WEST
REALTOR®
Office: 662.441.2500
Cell: 662.873.3007
Bruce@TomSmithLand.com

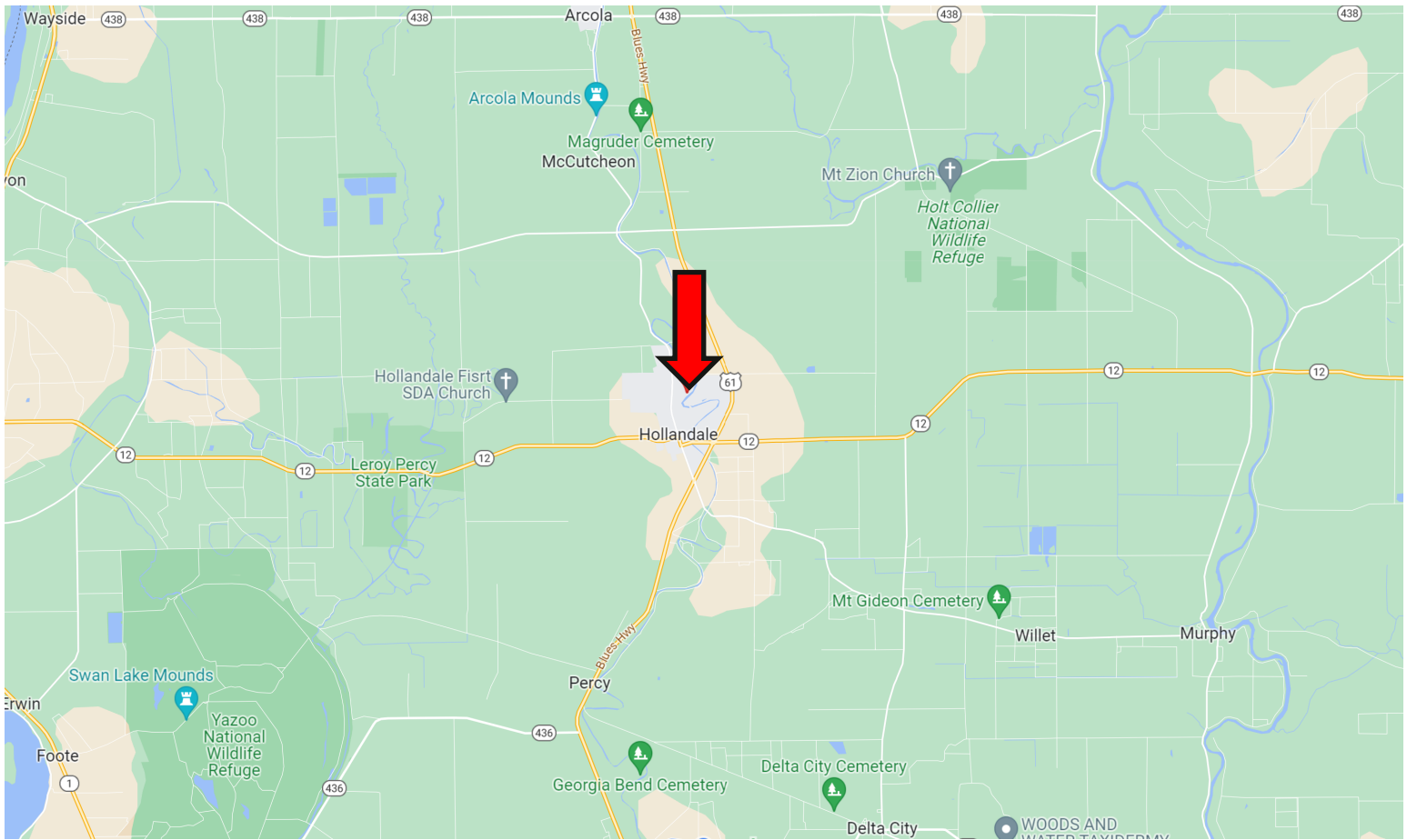


A Real Estate Expert You Can Trust
TomSmithLandandHomes.com

Information is believed to be accurate but not guaranteed.



Directional Map



Directions from Hwy 12 and Hwy 61 in Hollandale, MS: Travel West on Hwy 12 for .8 miles. Turn right onto East Ave and travel 1 mile. Turn right onto Magnolia Street for .2 miles and then turn left onto Oak Ct. The house is the second home on the right.

303 Oak Court Hollandale, MS 38748—Click for Directions



**BRUCE
WEST**
REALTOR®

Office: 662.441.2500

Cell: 662.873.3007

Bruce@TomSmithLand.com



A Real Estate Expert You Can Trust

TomSmithLandandHomes.com

Information is believed to be accurate but not guaranteed.

