

Beautiful Home on 10± Acres Grenada County, MS

1028 Dora Drive Grenada, MS

\$375,000

Have you been searching for a home that gives you that country feel but is still close to town? Look no further than this 2,507± sq. ft. home with four bedrooms and two baths on 10± acres in Grenada County, MS. While traveling up the gravel driveway, you can't help but feel secluded as mature hardwoods surround you. Entering the home, you will notice the beautiful open-concept design with high vaulted ceilings and a fireplace. It features a 700± sq. ft. two-car garage to keep you dry on those rainy days, an upstairs loft overlooking the balcony that will make for the perfect home office space, and an additional storage building that can be transitioned into a mother-in-law suite or used for storage. For the avid hunter, this 10± acres is small but mighty, offering good deer and turkey hunting with a 1± acre location that has been used in the past as a food plot. Walking outside to turkey birds gobbling or deer roaming the yard is not surprising. Give Kadero Edley a call to schedule your private viewing!



**KADERO
EDLEY**
REALTOR®

Office: 601.898.2772

Cell: 601.488.7000

Kadero@TomSmithLand.com

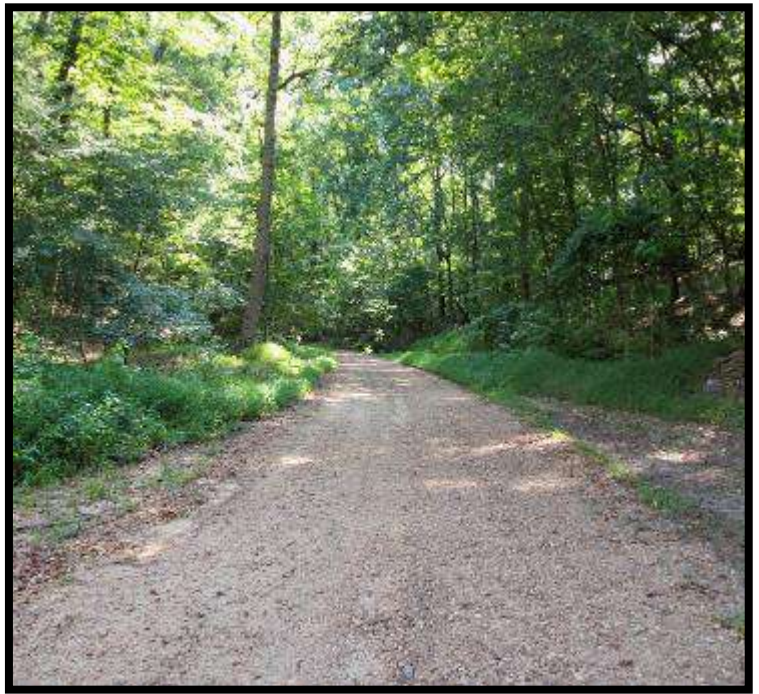


A Real Estate Expert You Can Trust

TomSmithLandandHomes.com

Information is believed to be accurate but not guaranteed.





KADERO EDLEY
REALTOR®

Office: 601.898.2772

Cell: 601.488.7000

Kadero@TomSmithLand.com



A Real Estate Expert You Can Trust
TomSmithLandandHomes.com

Information is believed to be accurate but not guaranteed.

Over 20 Years
2011-2023
BEST
BROKERAGES



KADERO EDLEY
REALTOR®

Office: 601.898.2772

Cell: 601.488.7000

Kadero@TomSmithLand.com

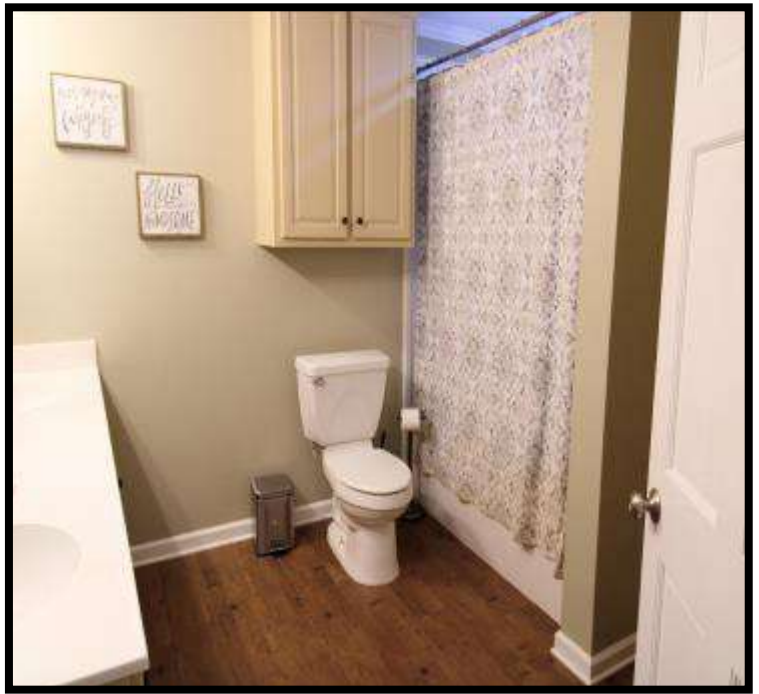


A Real Estate Expert You Can Trust

TomSmithLandandHomes.com

Information is believed to be accurate but not guaranteed.





KADERO EDLEY
REALTOR®

Office: 601.898.2772

Cell: 601.488.7000

Kadero@TomSmithLand.com

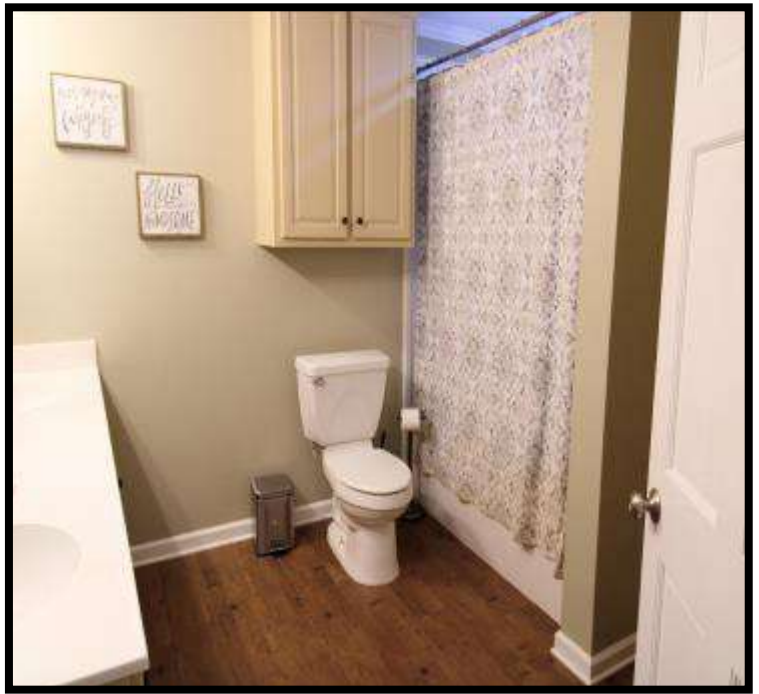


A Real Estate Expert You Can Trust

TomSmithLandandHomes.com

Information is believed to be accurate but not guaranteed.





KADERO EDLEY
REALTOR®

Office: 601.898.2772

Cell: 601.488.7000

Kadero@TomSmithLand.com

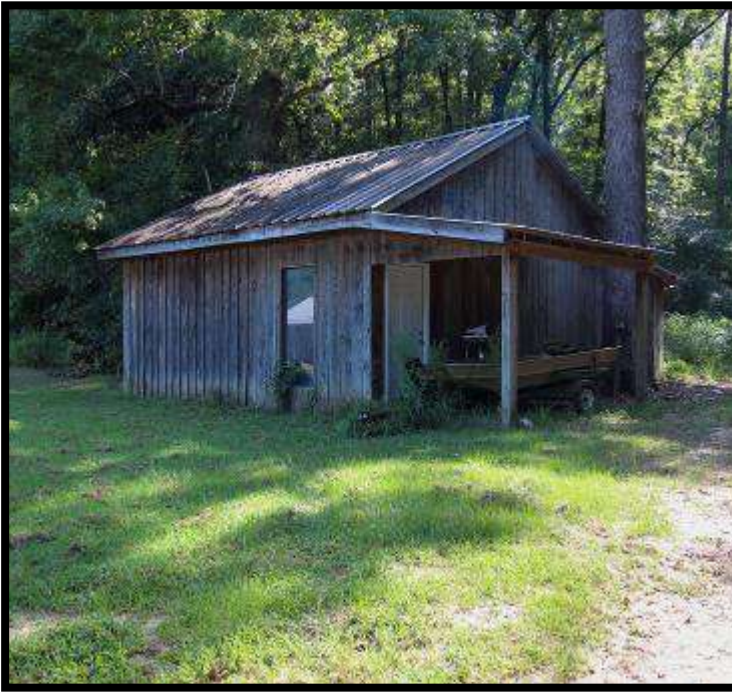


A Real Estate Expert You Can Trust

TomSmithLandandHomes.com

Information is believed to be accurate but not guaranteed.





KADERO EDLEY
REALTOR®

Office: 601.898.2772

Cell: 601.488.7000

Kadero@TomSmithLand.com



A Real Estate Expert You Can Trust

TomSmithLandandHomes.com

Information is believed to be accurate but not guaranteed.





KADERO EDLEY
REALTOR®

Office: 601.898.2772

Cell: 601.488.7000

Kadero@TomSmithLand.com



A Real Estate Expert You Can Trust

TomSmithLandandHomes.com

Information is believed to be accurate but not guaranteed.



Aerial Map



[Click Here For Interactive Map](#)

KADERO EDLEY
REALTOR®

Office: 601.898.2772

Cell: 601.488.7000

Kadero@TomSmithLand.com



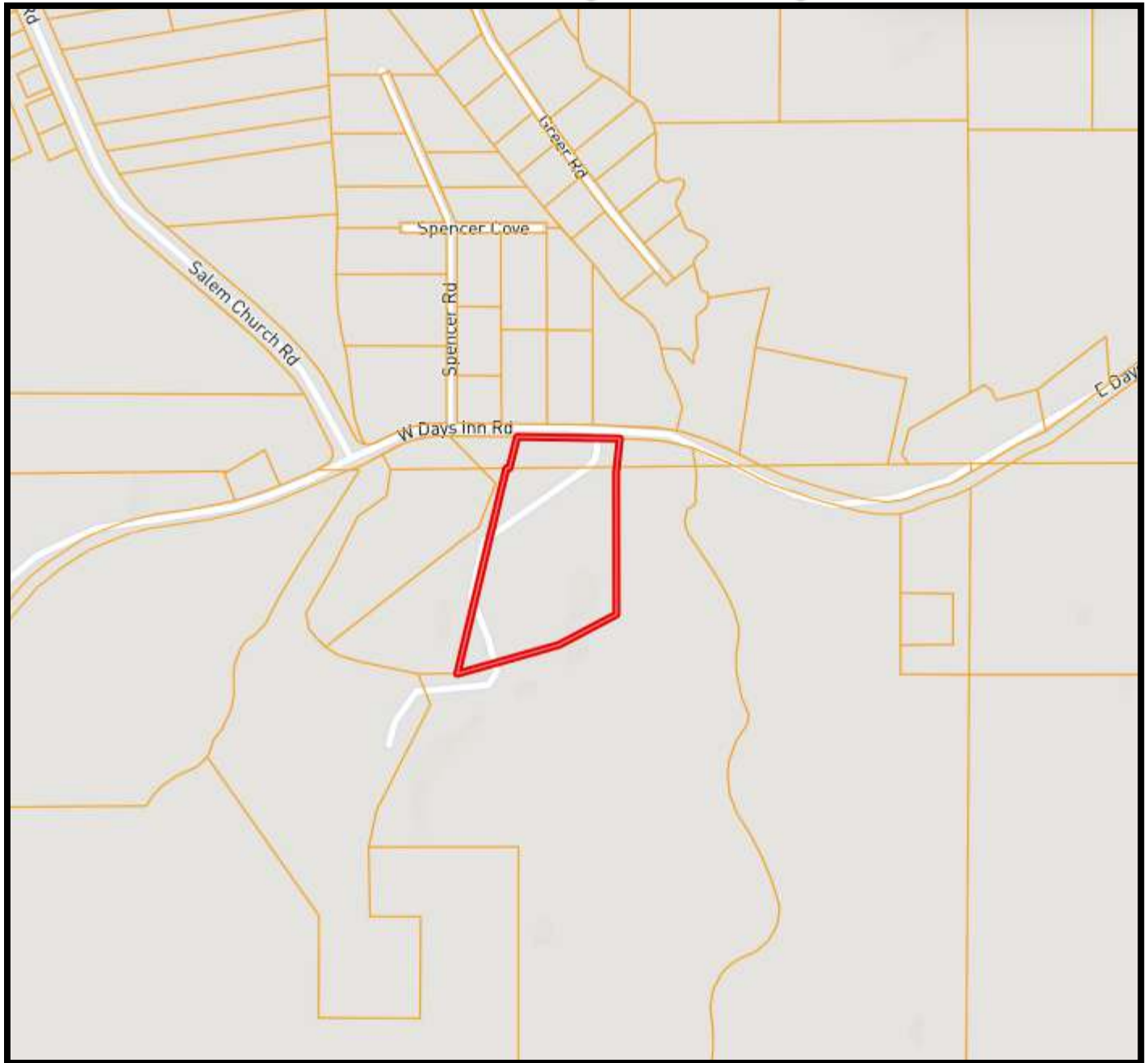
A Real Estate Expert You Can Trust

TomSmithLandandHomes.com

Information is believed to be accurate but not guaranteed.



Ownership Map



KADERO EDLEY
REALTOR®

Office: 601.898.2772

Cell: 601.488.7000

Kadero@TomSmithLand.com



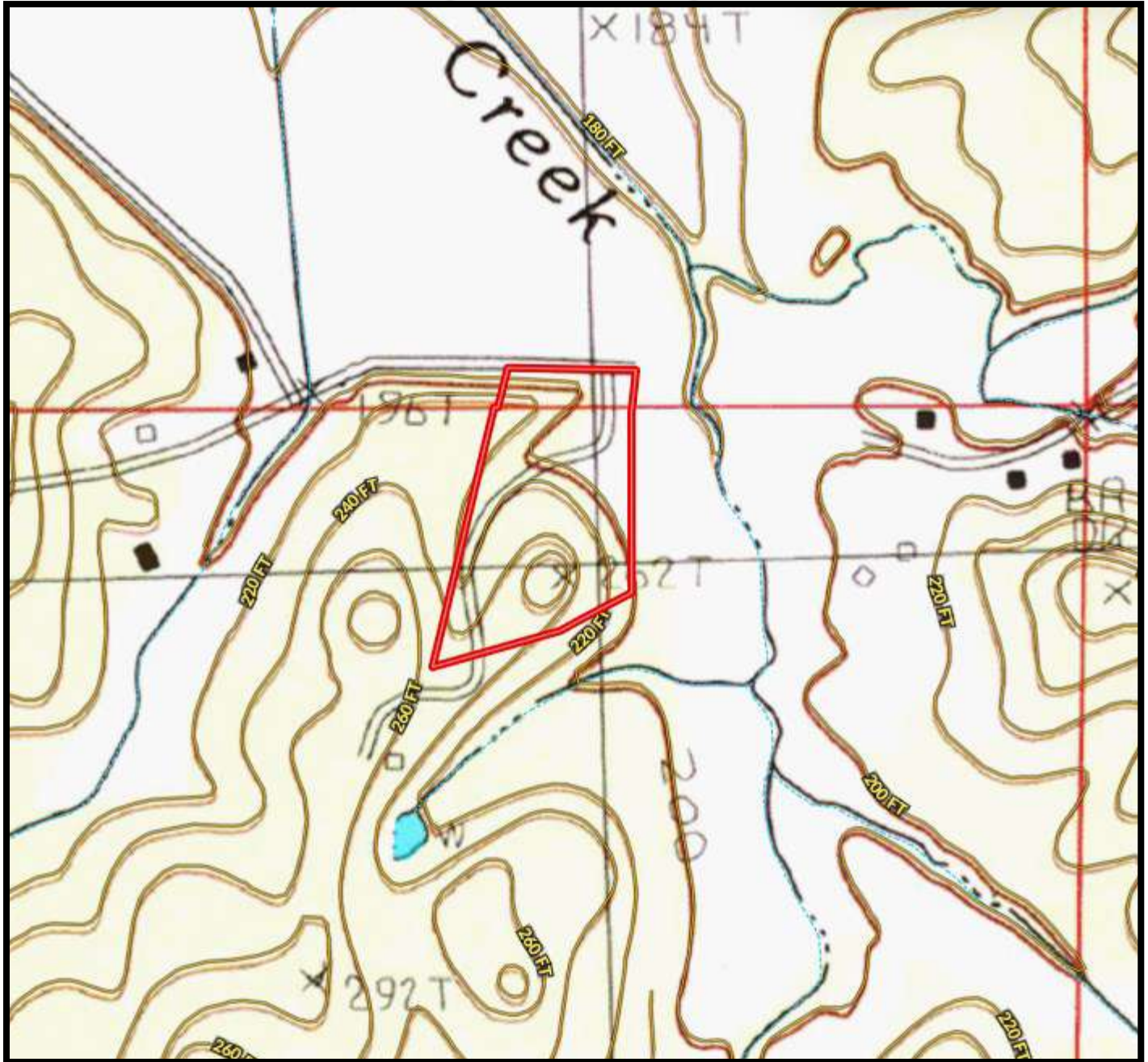
A Real Estate Expert You Can Trust

TomSmithLandandHomes.com

Information is believed to be accurate but not guaranteed.



Topo Map



KADERO EDLEY
REALTOR®

Office: 601.898.2772

Cell: 601.488.7000

Kadero@TomSmithLand.com



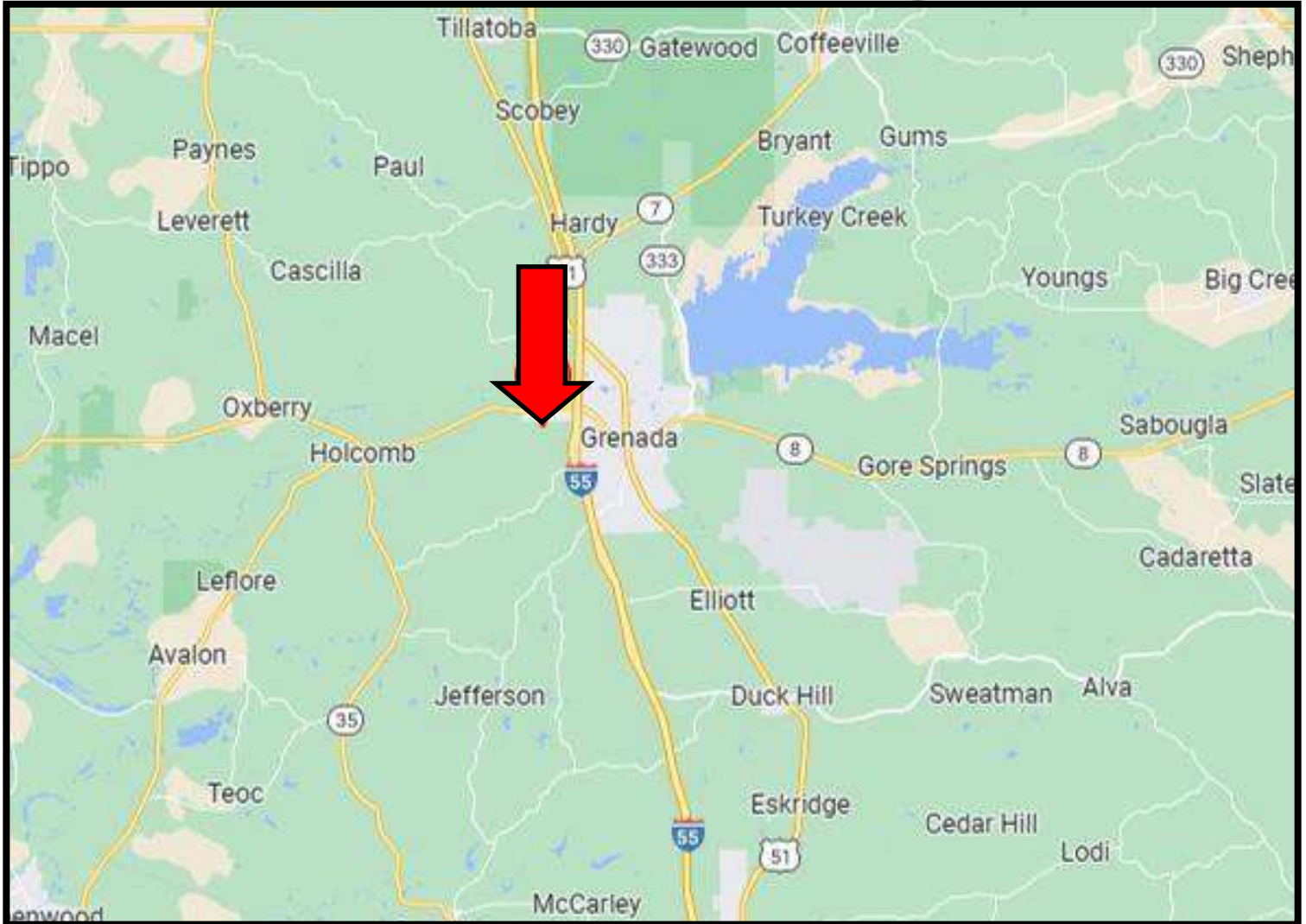
A Real Estate Expert You Can Trust

TomSmithLandandHomes.com

Information is believed to be accurate but not guaranteed.

2011-2023
BEST
HOUSING

Directional Map



Directions from Sunset Drive and MS-8 in Grenada, MS: Travel West on Sunset Dr. for 305 ft. Turn left onto MS-8 Frontage Rd. for 157 ft. Turn right onto Dora Dr. After 1.1 miles, the driveway to the property will be on your left. [Google Maps Link](#)

1028 Dora Drive Grenada, MS



**KADERO
EDLEY**

REALTOR®

Office: 601.898.2772

Cell: 601.488.7000

Kadero@TomSmithLand.com



A Real Estate Expert You Can Trust

TomSmithLandandHomes.com

Information is believed to be accurate but not guaranteed.

