

10.4± Acres with a Camp on Old River Concordia Parish, LA



757 Rokofee Road
Vidalia LA 71373

\$300,000

Are you looking to make memories that will last a lifetime? This 10.4+/- acre camp on Old River in Vidalia, LA, is exactly what you are looking for. The 750+/- square foot camp sits sixty-five feet above the river, has a private boat ramp, and sits directly across the water from the world-famous Giles Island. With direct access to the Mississippi River and the ability to hunt on the 10.4+/- acres, there is no end to the recreational possibilities. You cannot find a better place, from fishing on the lake or the river to some of the best waterfowl hunting around. The two-bedroom, one-bath camp has been renovated and is ready for you to enjoy it. The first floor is a wire-wrapped, metal floored deck that provides storage for all your equipment and easy access to all the plumbing for easy maintenance. The main floor features a wraparound deck with plenty of room to watch the sunset, grill with friends, or have a quiet morning coffee. The one-ton elevator provides easy access to both decks and makes hauling supplies and equipment a breeze. Across the road from the camp is a concrete boat ramp that provides easy access to the lake at even the lowest water levels. The 10.4+/- acres offer outdoor recreation at its best. The bar pit provides excellent duck hunting when you don't want to try the Mississippi River. The thick terrain is a haven for large whitetail deer and the occasional black bear. Call Clif to schedule your showing today!

[Google Maps](#)



**CLIF
CANNON**
REALTOR®

Office: 601.990.5070

Cell: 601.565.1070

Clif@TomSmithLand.com



A Real Estate Expert You Can Trust

TomSmithLandandHomes.com

Information is believed to be accurate but not guaranteed.





CLIF CANNON

REALTOR®

Office: 601.990.5070

Cell: 601.565.1070

Clif@TomSmithLand.com



A Real Estate Expert You Can Trust

TomSmithLandandHomes.com

Information is believed to be accurate but not guaranteed.





CLIF CANNON

REALTOR

Office: 601.990.5070

Cell: 601.565.1070

Clif@TomSmithLand.com



A Real Estate Expert You Can Trust

TomSmithLandandHomes.com

Information is believed to be accurate but not guaranteed.





CLIF CANNON

Office: 601.790.5070
Cell: 601.565.1070
Email: TomSmithLand.com



A Real Estate Expert You Can Trust
TomSmithLandandHomes.com

Information is believed to be accurate but not guaranteed.



Aerial Map



Interactive Map

CLIF CANNON

REALTOR®

Office: 601.990.5070

Cell: 601.565.1070

Clif@TomSmithLand.com



A Real Estate Expert You Can Trust

TomSmithLandandHomes.com

Information is believed to be accurate but not guaranteed.



Topographic Map



CLIF CANNON

REALTOR®

Office: 601.990.5070

Cell: 601.565.1070

Clif@TomSmithLand.com



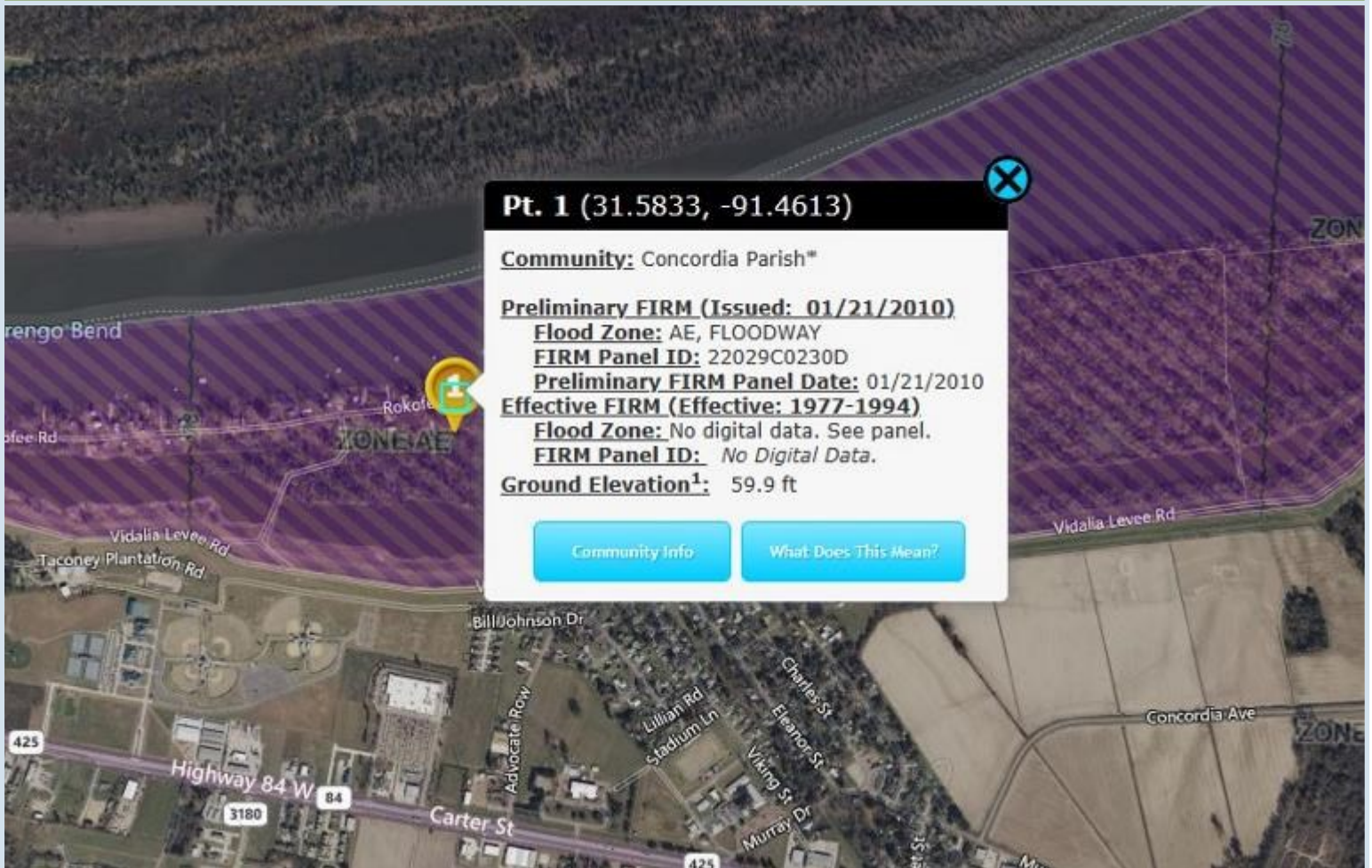
A Real Estate Expert You Can Trust

TomSmithLandandHomes.com

Information is believed to be accurate but not guaranteed.



Flood Map



CLIF CANNON

REALTOR®

Office: 601.990.5070

Cell: 601.565.1070

Clif@TomSmithLand.com



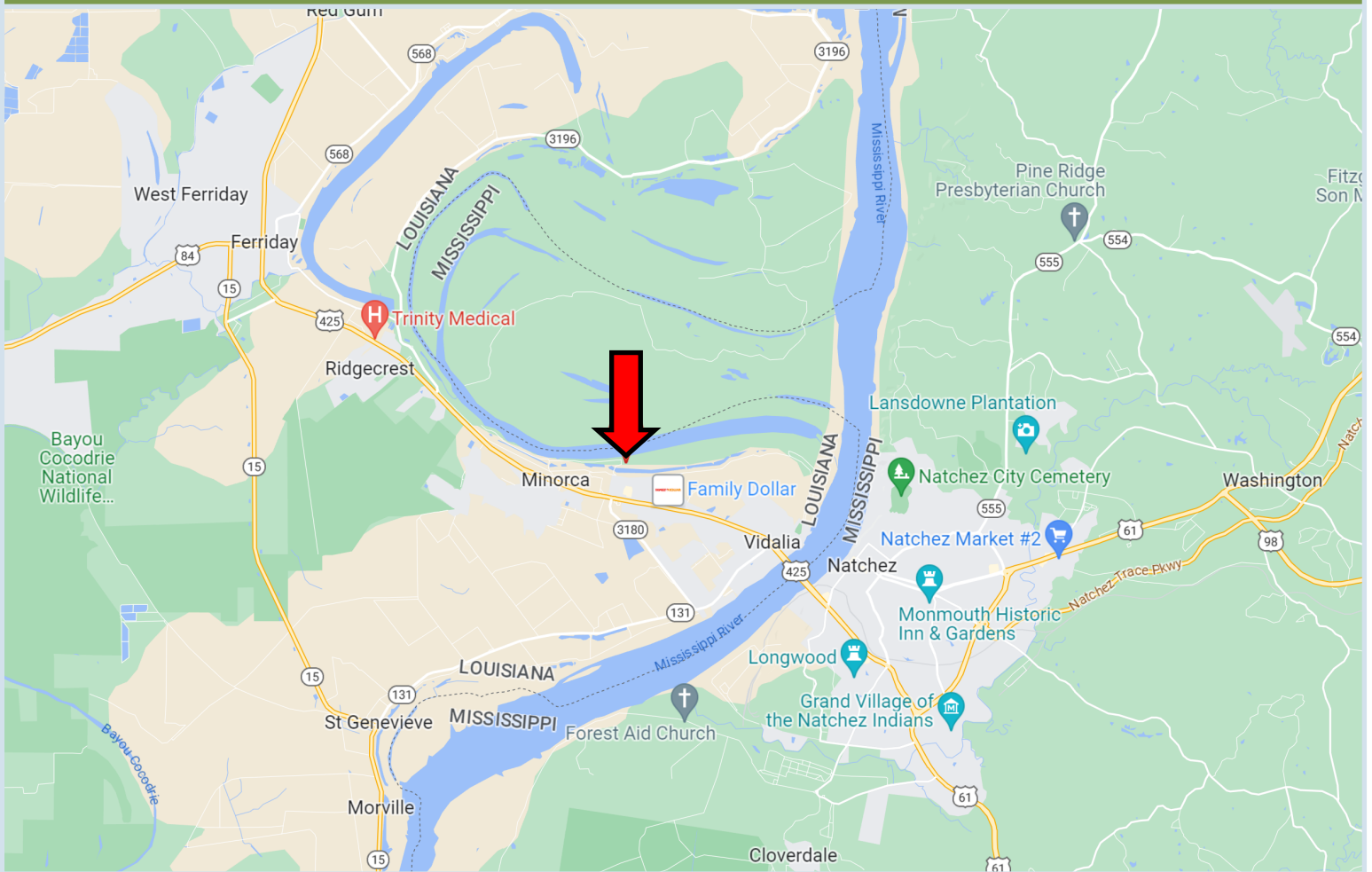
A Real Estate Expert You Can Trust

TomSmithLandandHomes.com

Information is believed to be accurate but not guaranteed.



Directional Map



Directions from Hwy 61 and Hwy 425 in Natchez, MS: Travel east on Hwy 425 for 6.3 miles. Turn right onto Taconey Plantation Rd. and travel for .4 miles. Turn left toward Par Rd 4B-133/Vidalia Levee Rd. and travel .7 miles. Turn right onto Par Rd. 4B-131/Rokofee Rd. The property will be on the right.
757 Rokofee Road Vidalia, LA 71373

Google Maps



**CLIF
CANNON**
REALTOR®

Office: 601.990.5070
Cell: 601.565.1070
Clif@TomSmithLand.com



A Real Estate Expert You Can Trust

TomSmithLandandHomes.com

Information is believed to be accurate but not guaranteed.

