

5± Acre Recreational Property Concordia Parish, LA



000 Rokafee Road
Vidalia, LA 71373

\$90,000

If you have been looking for a place offering direct access to the Mississippi River, look no further than this 5+/- acre lot on Old River in Vidalia, LA. This excellent property with access to the "Bar Pit" just behind the levee is ready for you to build the camp of your dreams. Old River, an oxbow of the Mississippi River, is renowned for its excellent fishing and waterfowl hunting. The world-famous Giles Island is just on the other side of the lake. Old River is still connected to the Mighty Mississippi, so you can experience some of the great fishing and hunting opportunities that the river provides. The current owner will allow the use of the private boat ramp just one hundred yards away.

Directions from Vidalia, Louisiana: Travel west on US-84 for 3 miles. Turn right onto Twin Oaks Road and travel for .2 miles. Continue straight onto Minorca Road and travel for .2 miles. Turn right onto Rokafee Road and travel for 1.1 miles. The property will be on the right.

[Google Maps](#)



**CLIF
CANNON**
REALTOR®

Office: 601.990.5070

Cell: 601.565.1070

Clif@TomSmithLand.com

A Real Estate Expert You Can Trust

TomSmithLandandHomes.com

Information is believed to be accurate but not guaranteed.





CLIF CANNON
REALTOR®

Office: 601.990.5070
Cell: 601.565.1070
Clif@TomSmithLand.com

Smith
LAND AND
HOMES
Expect More. Get More.

A Real Estate Expert You Can Trust
TomSmithLandandHomes.com

Information is believed to be accurate but not guaranteed.



Aerial Map



CLIF CANNON

REALTOR®

Office: 601.990.5070

Cell: 601.565.1070

Clif@TomSmithLand.com



A Real Estate Expert You Can Trust

TomSmithLandandHomes.com

Information is believed to be accurate but not guaranteed.



Topographic Map



CLIF CANNON

REALTOR®

Office: 601.990.5070

Cell: 601.565.1070

Clif@TomSmithLand.com



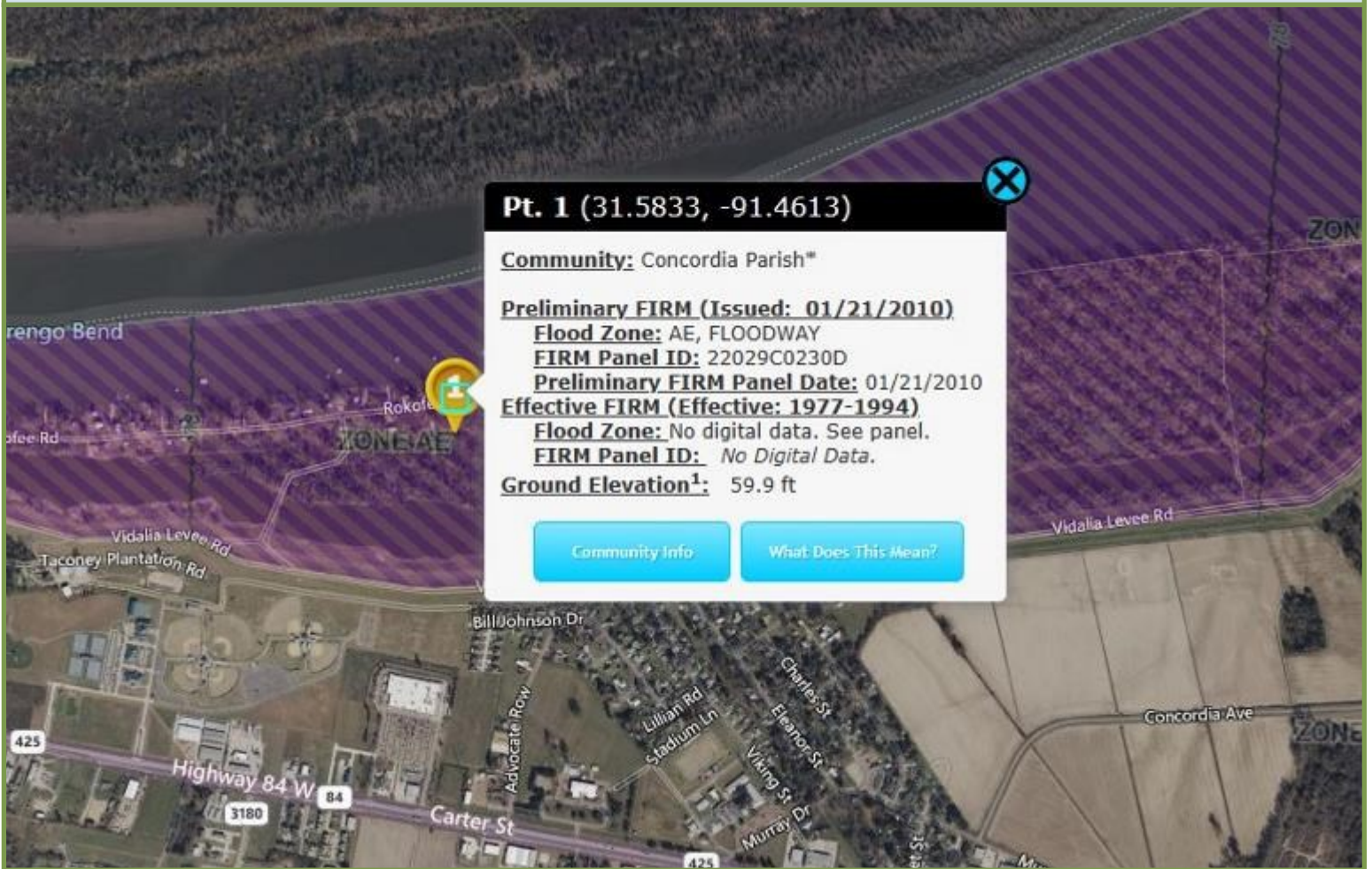
A Real Estate Expert You Can Trust

TomSmithLandandHomes.com

Information is believed to be accurate but not guaranteed.



Flood Map



CLIF CANNON

REALTOR®

Office: 601.990.5070

Cell: 601.565.1070

Clif@TomSmithLand.com



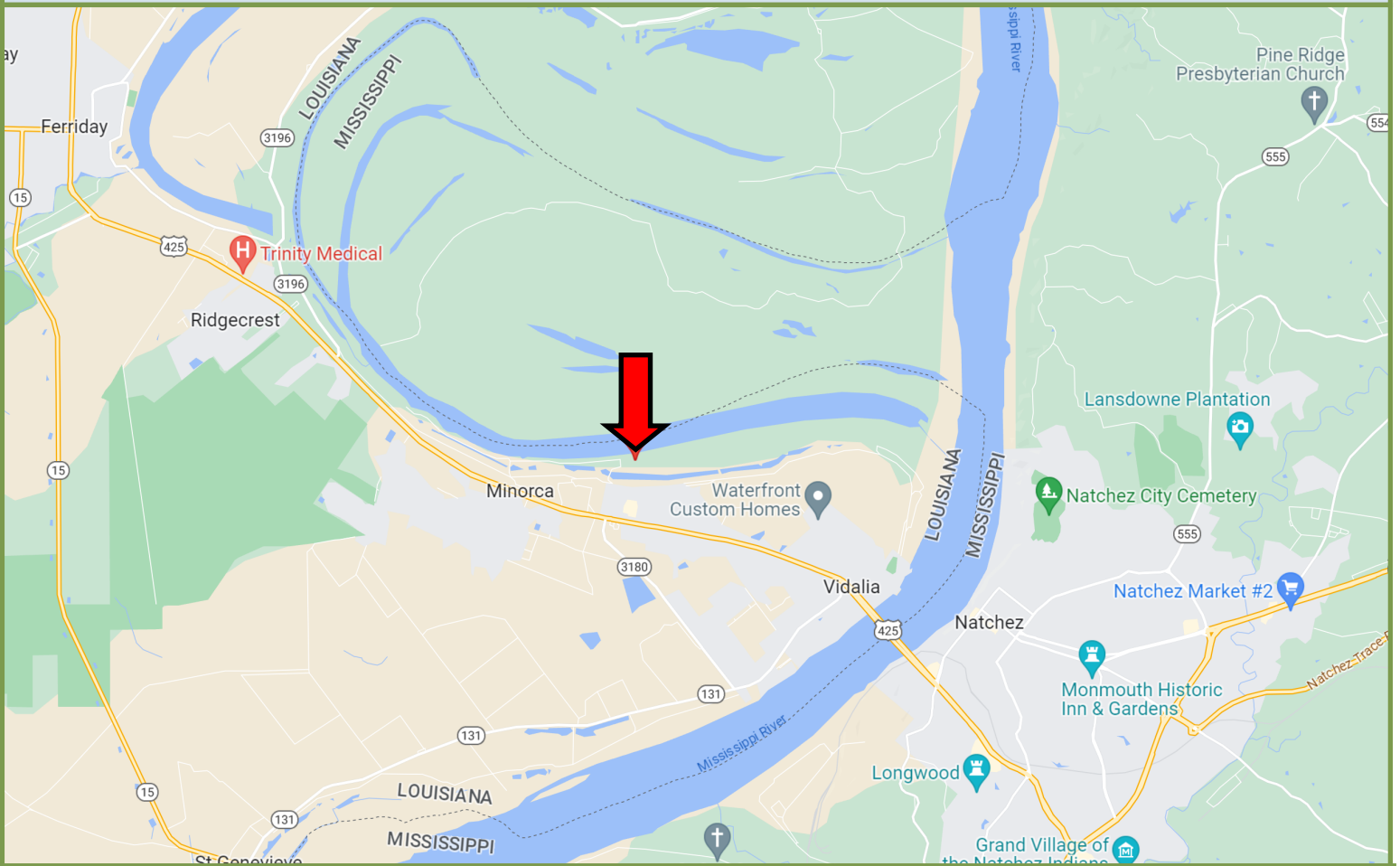
A Real Estate Expert You Can Trust

TomSmithLandandHomes.com

Information is believed to be accurate but not guaranteed.



Directional Map



Directions from Vidalia, Louisiana: Travel west on US-84 for 3 miles. Turn right onto Twin Oaks Road and travel for .2 miles. Continue straight onto Minorca Road and travel for .2 miles. Turn right onto Rokafee Road and travel for 1.1 miles. The property will be on the right.

000 Rokafee Road

[Google Maps](#)



**CLIF
CANNON**
REALTOR®

Office: 601.990.5070

Cell: 601.565.1070

Clif@TomSmithLand.com



A Real Estate Expert You Can Trust

TomSmithLandandHomes.com

Information is believed to be accurate but not guaranteed.

