

RECREATIONAL PROPERTY

30± Acres in Franklin County, MS



000 Bogue Chitto Road
McCall Creek, MS 39647

\$117,000

If you are looking for an excellent recreational property or future homesite, this Franklin County property is what you are looking for. Located in McCall Creek, MS, this 30+/- acre tract is located on the corner of Bouge Chitto Road and Olympia Road in east Franklin County, just one and a half miles from "Granny's Corner" and three miles from the Homochitto National Forest. The timber was harvested in 2022, which has resulted in excellent habitat for whitetail deer and other wildlife. A stream-side management zone was left along the small stream bordering the property's north side. The terrain is primarily flat, dropping off into a small bottom on the property's northwest side. There are multiple locations for a home, and power is available on the road. Call Clif to schedule your private showing today!

GOOGLE MAPS



CLIF
CANNON
REALTOR®

Office: 601.990.5070

Cell: 601.565.1070

Clif@TomSmithLand.com



A Real Estate Expert You Can Trust

TomSmithLandandHomes.com

Information is believed to be accurate but not guaranteed.





CLIF CANNON

REALTOR

Office: 601.990.6070

Cell: 601.565.1070

Clif@TomSmithLand.com



A Real Estate Expert You Can Trust
TomSmithLandandHomes.com

Information is believed to be accurate but not guaranteed.





CLIF CANNON

REALTOR

Office: 601.365.1070

Cell: 601.365.1070

Clif@TomSmithLand.com



Expect More. Get More.

A Real Estate Expert You Can Trust

TomSmithLandandHomes.com

Information is believed to be accurate but not guaranteed.



Aerial Map



CLIF CANNON

REALTOR®

Office: 601.990.5070

Cell: 601.565.1070

Clif@TomSmithLand.com



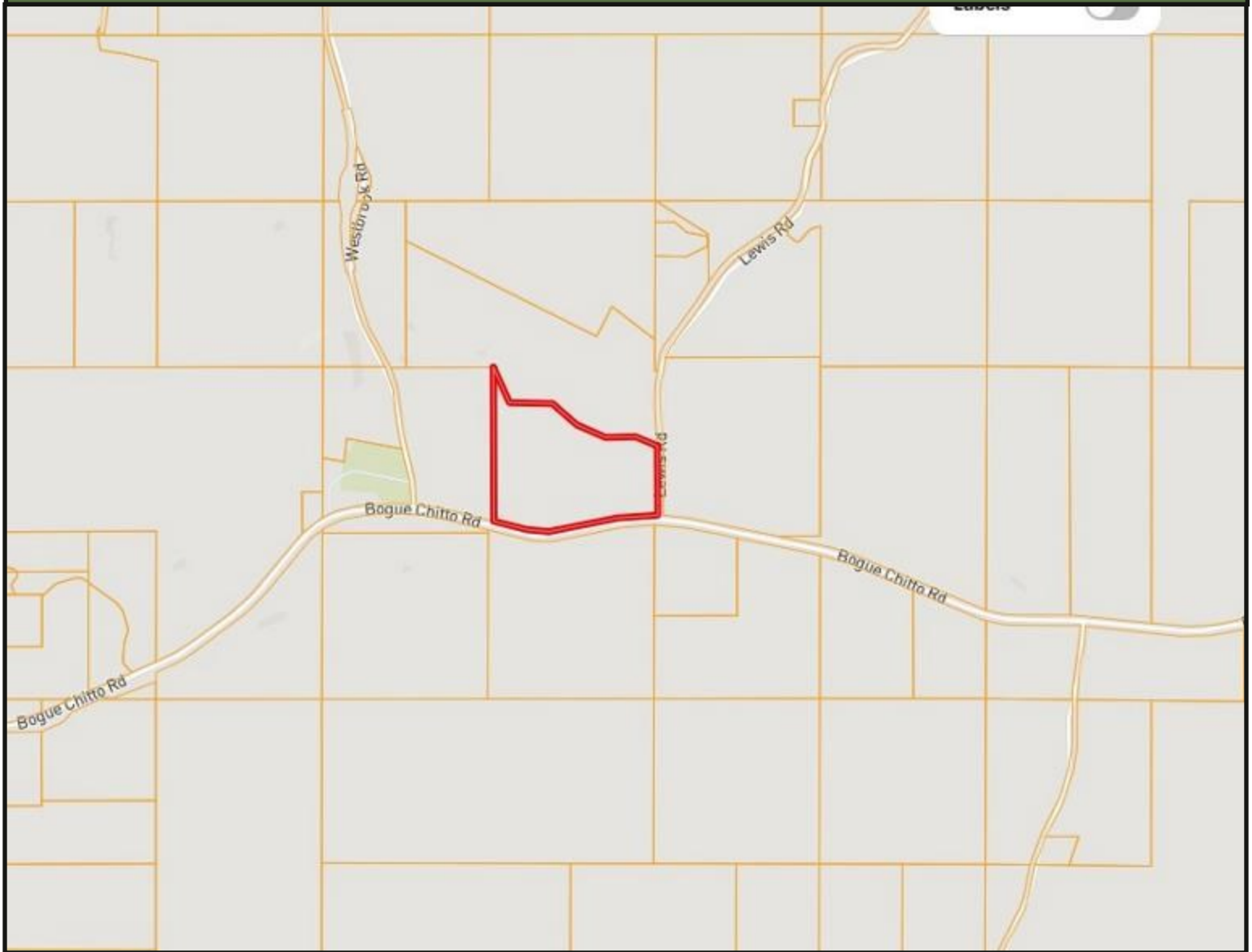
A Real Estate Expert You Can Trust

TomSmithLandandHomes.com

Information is believed to be accurate but not guaranteed.



Ownership Map



CLIF CANNON

REALTOR®

Office: 601.990.5070

Cell: 601.565.1070

Clif@TomSmithLand.com



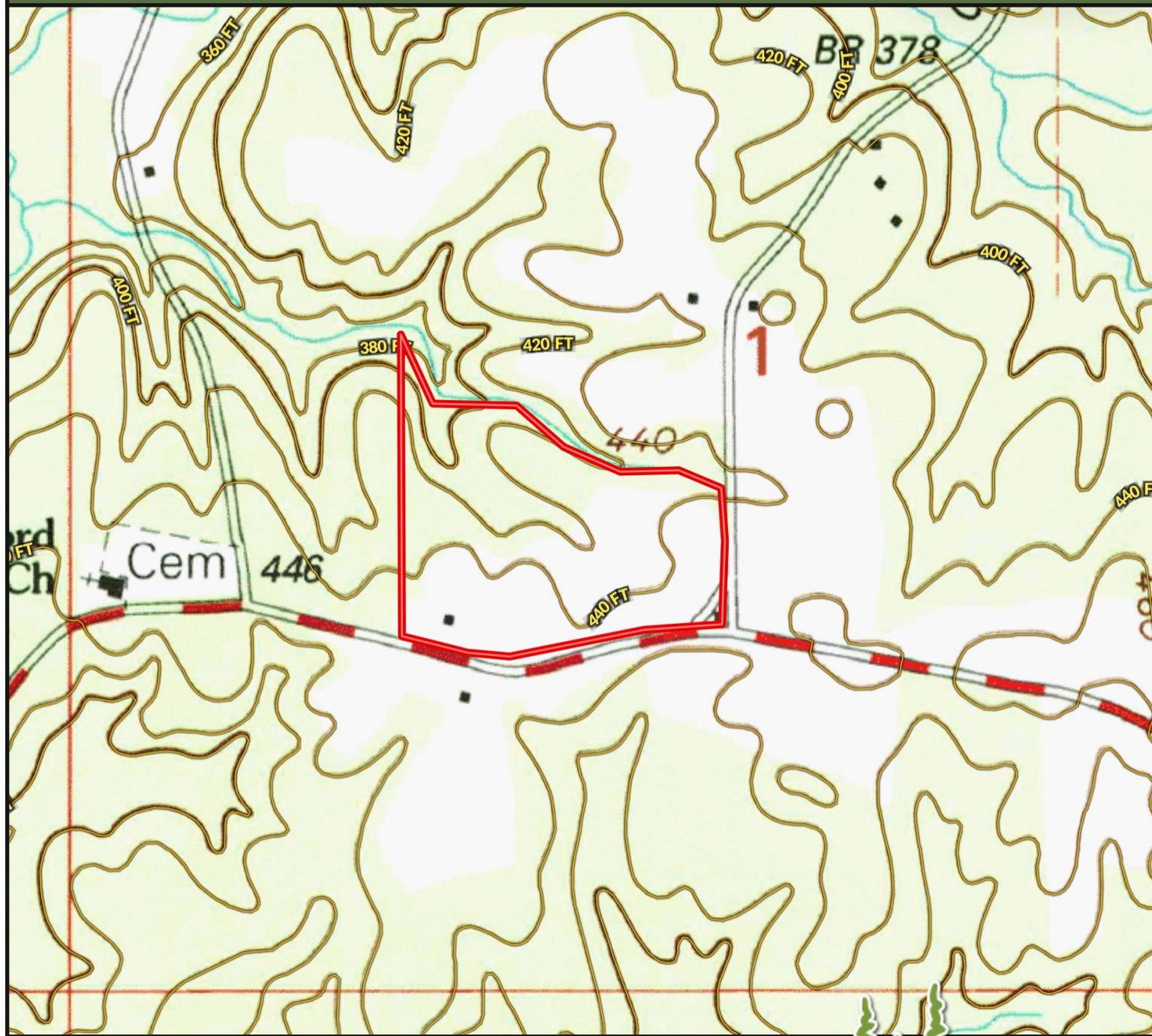
A Real Estate Expert You Can Trust

TomSmithLandandHomes.com

Information is believed to be accurate but not guaranteed.



Topographic Map



CLIF CANNON

REALTOR®

Office: 601.990.5070

Cell: 601.565.1070

Clif@TomSmithLand.com



A Real Estate Expert You Can Trust

TomSmithLandandHomes.com

Information is believed to be accurate but not guaranteed.



Flood Map



CLIF CANNON
REALTOR®

Office: 601.990.5070

Cell: 601.565.1070

Clif@TomSmithLand.com

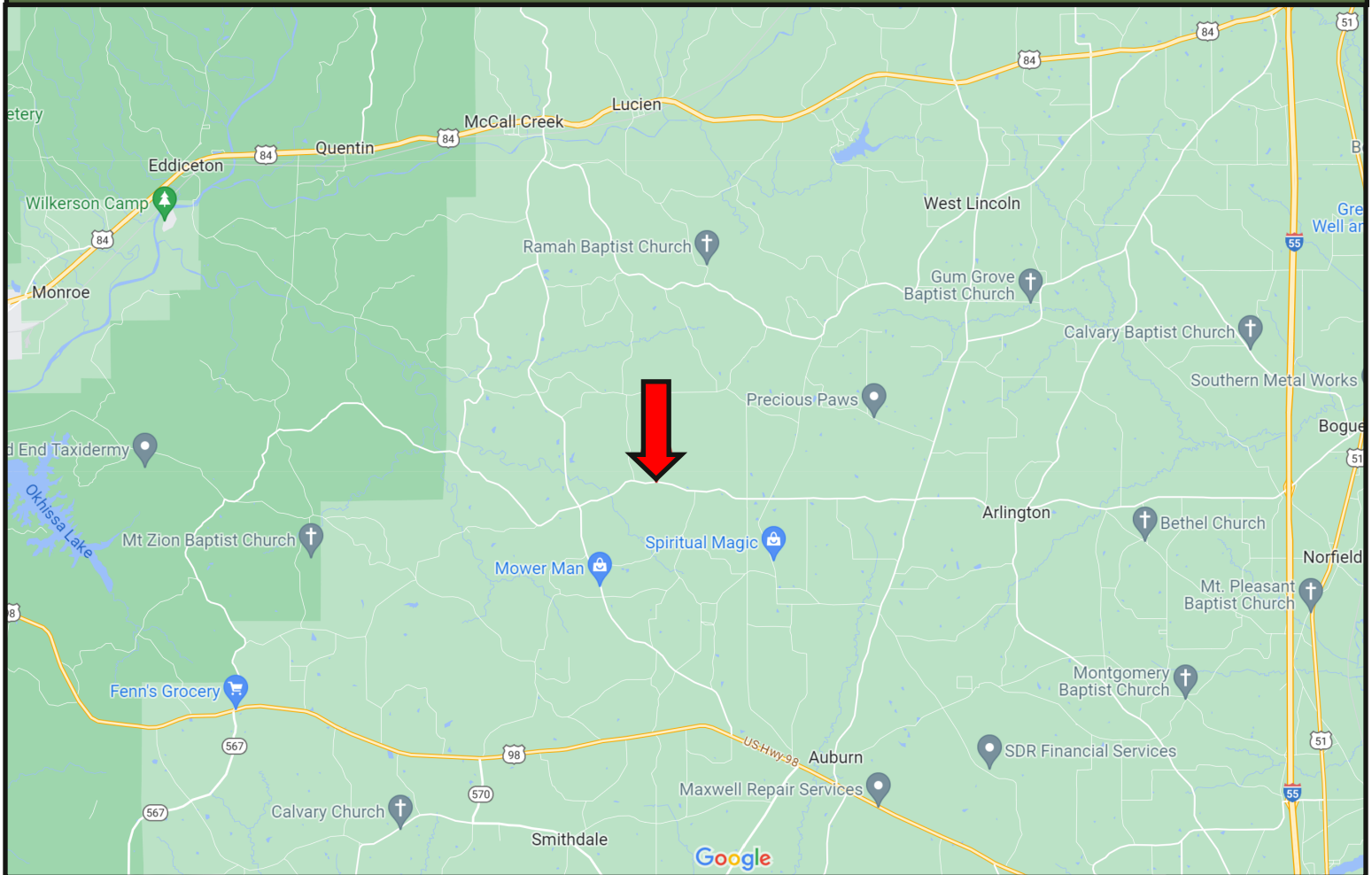


A Real Estate Expert You Can Trust
TomSmithLandandHomes.com

Information is believed to be accurate but not guaranteed.



Directional Map



Directions from the intersection of US-98 and Interstate-55 in Summit, MS: Take exit 20B from I-55 and travel west on US-98 for 11 miles. Turn right onto Burt Jordan Road and travel 5 miles. Turn right onto Bogue Chitto Road and travel for 1.4 miles. The property will be on the left. [Google Maps](#)

000 Bogue Chitto Road
McCall Creek, MS 39647

CLIF CANNON
REALTOR®
Office: 601.990.5070
Cell: 601.565.1070
Clif@TomSmithLand.com



A Real Estate Expert You Can Trust
TomSmithLandandHomes.com

Information is believed to be accurate but not guaranteed.

