

74.42± ACRE DEVELOPMENT TRACT IN RANKIN COUNTY, MS



\$446,520

Welcome to your new development tract in Rankin County, MS. This 74.42± acre property in Rankin County, MS, offers an exciting development opportunity in a thriving area. The timber has recently been harvested, creating an ideal space for new projects. With 140 feet of paved road frontage and utilities available, it's well-prepared for future use. The land features two small ponds that provide an excellent water source for local wildlife, making it a good habitat for turkey and deer hunting. Conveniently located just 30 minutes east of Madison, MS, this property combines rural charm with accessibility to nearby amenities. Call Kadero Edley for your private viewing today!



**KADERO
EDLEY**

REALTOR®

Office: 601.898.2772

Cell: 601.488.7000

Kadero@TomSmithLand.com



Expect More. Get More.

A Real Estate Expert You Can Trust

TomSmithLandandHomes.com

Information is believed to be accurate but not guaranteed.





KADERO EDLEY

REALTOR®

Office: 601.898.2772

Cell: 601.488.7000

Kadero@TomSmithLand.com



Expect More. Get More.

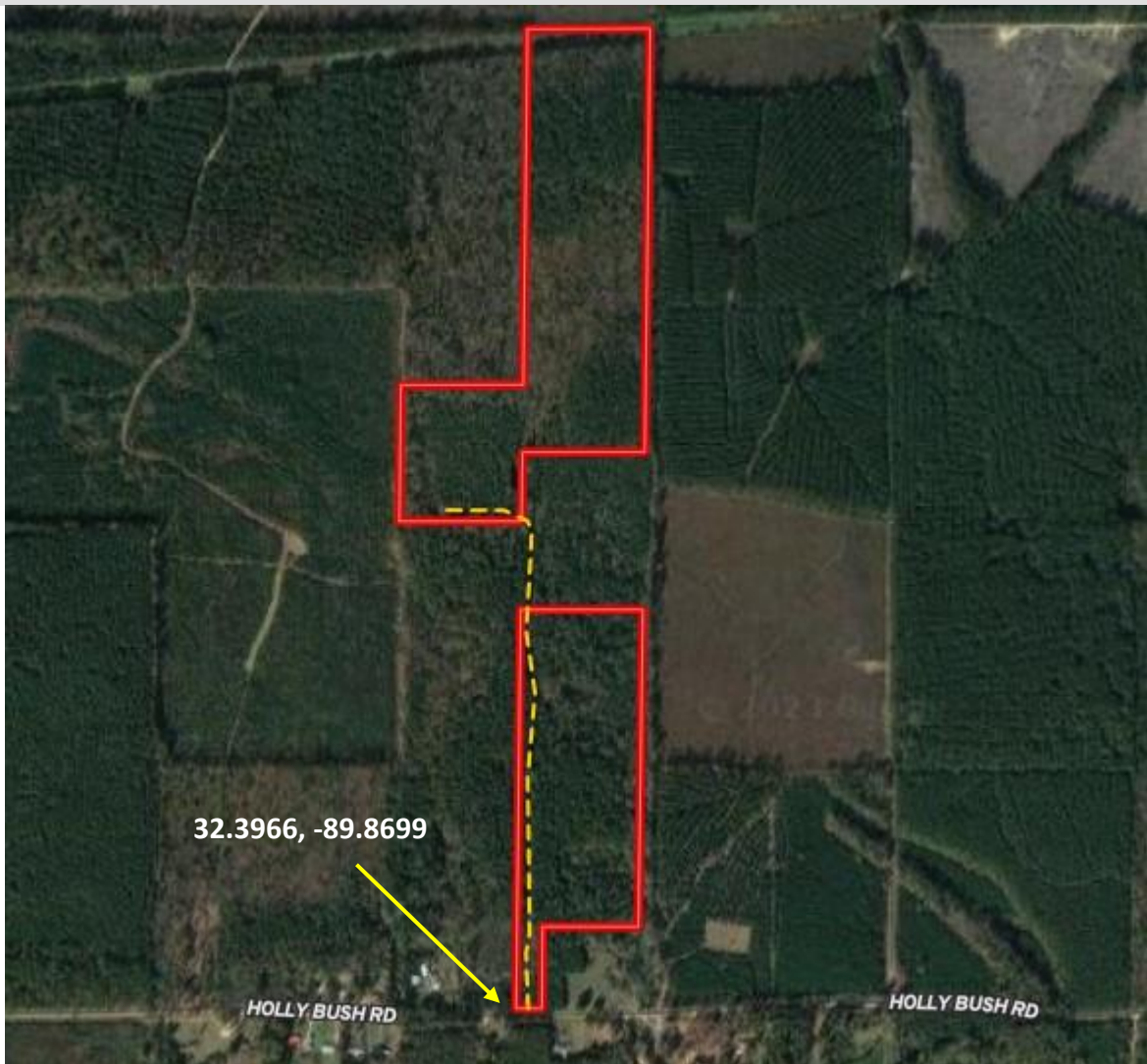
A Real Estate Expert You Can Trust

TomSmithLandandHomes.com

Information is believed to be accurate but not guaranteed.



AERIAL MAP



[Click Here for Interactive Map](#)



**KADERO
EDLEY**

REALTOR®

Office: 601.898.2772

Cell: 601.488.7000

Kadero@TomSmithLand.com



Expect More. Get More.

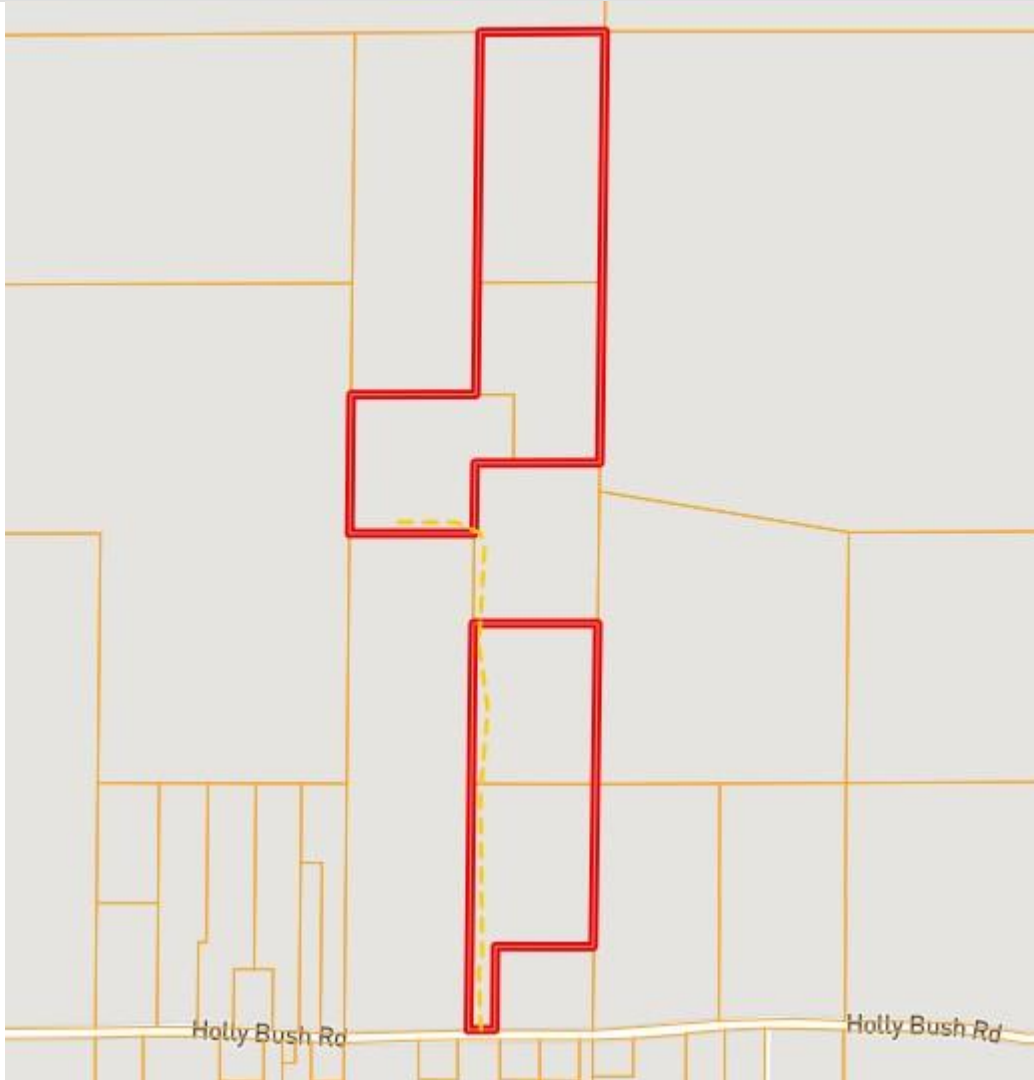
A Real Estate Expert You Can Trust

TomSmithLandandHomes.com

Information is believed to be accurate but not guaranteed.



OWNERSHIP MAP



**KADERO
EDLEY**

REALTOR®

Office: 601.898.2772

Cell: 601.488.7000

Kadero@TomSmithLand.com



Expect More. Get More.

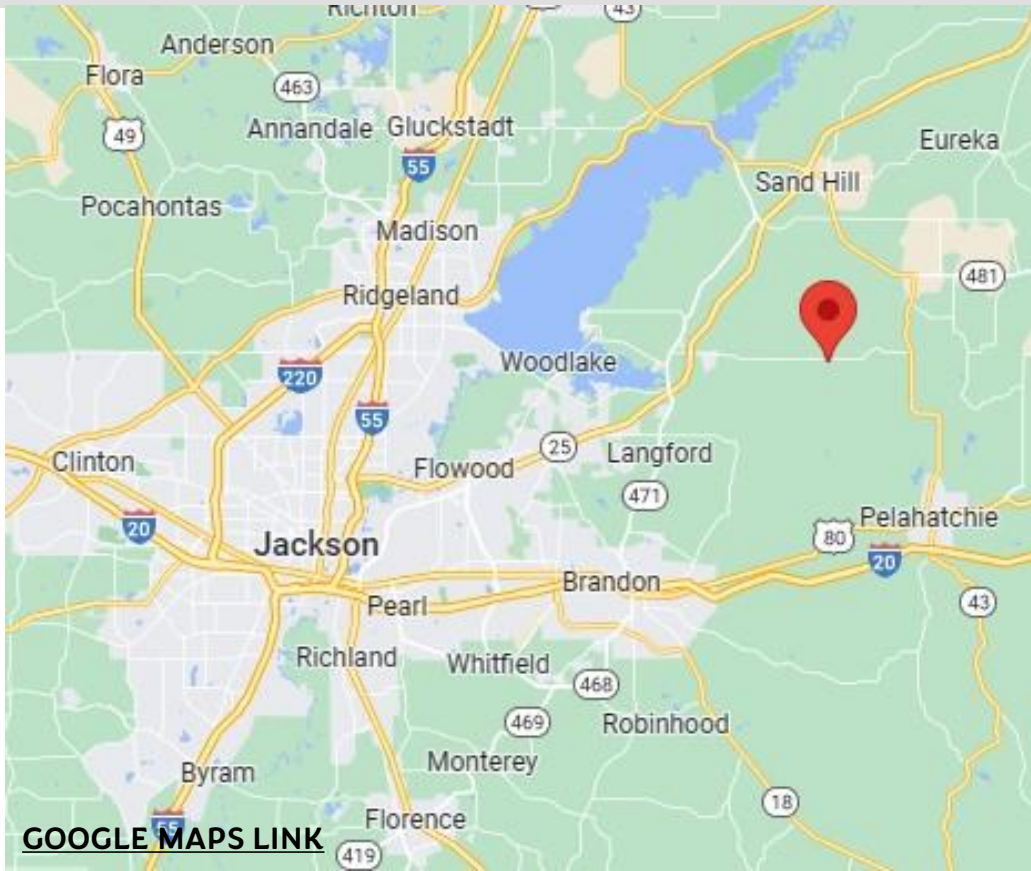
A Real Estate Expert You Can Trust

TomSmithLandandHomes.com

Information is believed to be accurate but not guaranteed.



DIRECTIONAL MAP WITH LINK



[GOOGLE MAPS LINK](#)

Directions from MS-25N in Flowood, MS: Travel east on MS-25N/Lakeland Dr. toward Museum Blvd for 13.9 miles. Take a slight right toward Holly Bush Rd after 305 ft. Take another slight right onto Holly Bush Rd for 6 miles and the property will be on your left.



**KADERO
EDLEY**

REALTOR®

Office: 601.898.2772

Cell: 601.488.7000

Kadero@TomSmithLand.com



Expect More. Get More.

A Real Estate Expert You Can Trust

TomSmithLandandHomes.com

Information is believed to be accurate but not guaranteed.

