

10+/- Acres with Two Homes in Franklin County, MS



**507 Robertson Road
Meadville, MS 39653**

\$395,000

Check out this exceptional four-bedroom, three-bath 2,700 square foot home located on 10+/- acres in Franklin County, MS. Just a short fifteen-minute drive south of Bude, MS, this beautiful home has everything you are looking for. The interior features tile floors, an updated kitchen with granite countertops, and solid oak cabinets. A separate pantry and utility room provide plenty of storage. Two fireplaces heat the entire home efficiently, and double-pane windows keep the heat in. A 5-ton heat pump provides plenty of cold air for hot summers, and two water heaters provide plenty of water. The two-car garage offers shelter for your vehicle, while a 16x42 covered concrete porch and a fenced backyard, including a delightful pizza oven, make outdoor gatherings perfect. An adjacent 16x80 three-bedroom, two-bath mobile home with a carport and 20x20 covered deck provides a mother-in-law suite. Additional storage is fulfilled by a 14x24 building and a 48x30 barn with a loft. The property accommodates various interests, with a chicken coop, a fenced area, and a minnow pond. A treatment plant provides septic, and water is community. To top it off, a small pond and food plot complete this property. Call Clif to schedule your private showing today!

Google Maps



**CLIF
CANNON**
REALTOR®

Office: 601.990.5070

Cell: 601.565.1070

Clif@TomSmithLand.com



A Real Estate Expert You Can Trust

TomSmithLandandHomes.com

Information is believed to be accurate but not guaranteed.





CLIF CANNON

REALTOR®

Office: 601.990.5070

Cell: 601.565.1070

Clif@TomSmithLand.com

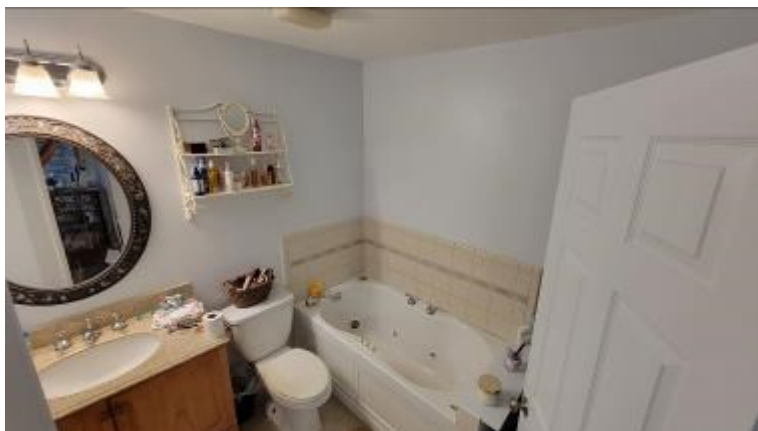


A Real Estate Expert You Can Trust

TomSmithLandandHomes.com

Information is believed to be accurate but not guaranteed.





CLIF CANNON

REALTOR®

Office: 601.990.5070

Cell: 601.565.1070

Clif@TomSmithLand.com



A Real Estate Expert You Can Trust

TomSmithLandandHomes.com

Information is believed to be accurate but not guaranteed.





CLIF CANNON

REALTOR®

Office: 601.990.5070

Cell: 601.565.1070

Clif@TomSmithLand.com



A Real Estate Expert You Can Trust

TomSmithLandandHomes.com

Information is believed to be accurate but not guaranteed.





CLIF CANNON

REALTOR®

Office: 601.990.5070

Cell: 601.565.1070

Clif@TomSmithLand.com



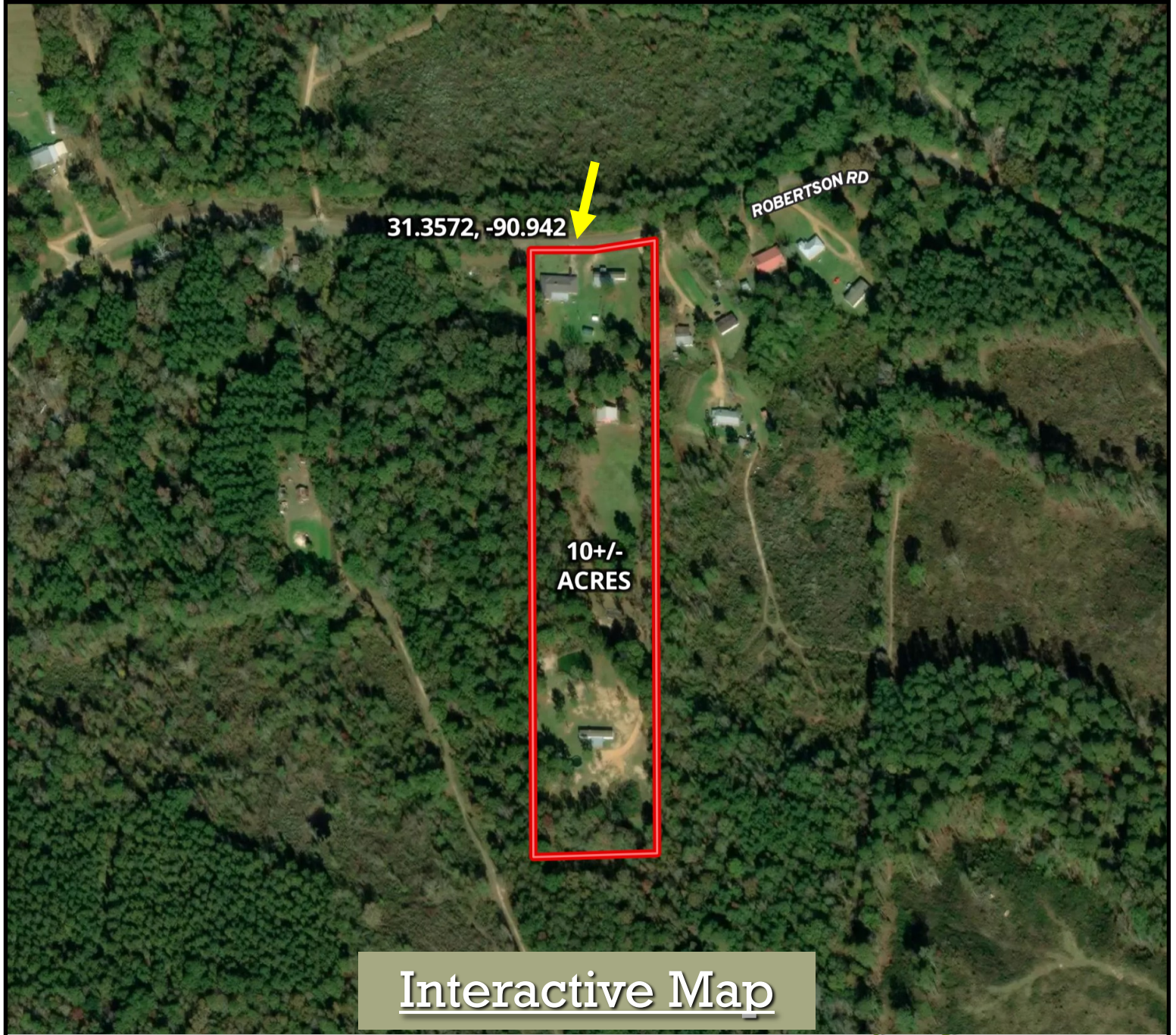
A Real Estate Expert You Can Trust

TomSmithLandandHomes.com

Information is believed to be accurate but not guaranteed.



Aerial Map



CLIF CANNON
REALTOR®

Office: 601.990.5070

Cell: 601.565.1070

Clif@TomSmithLand.com

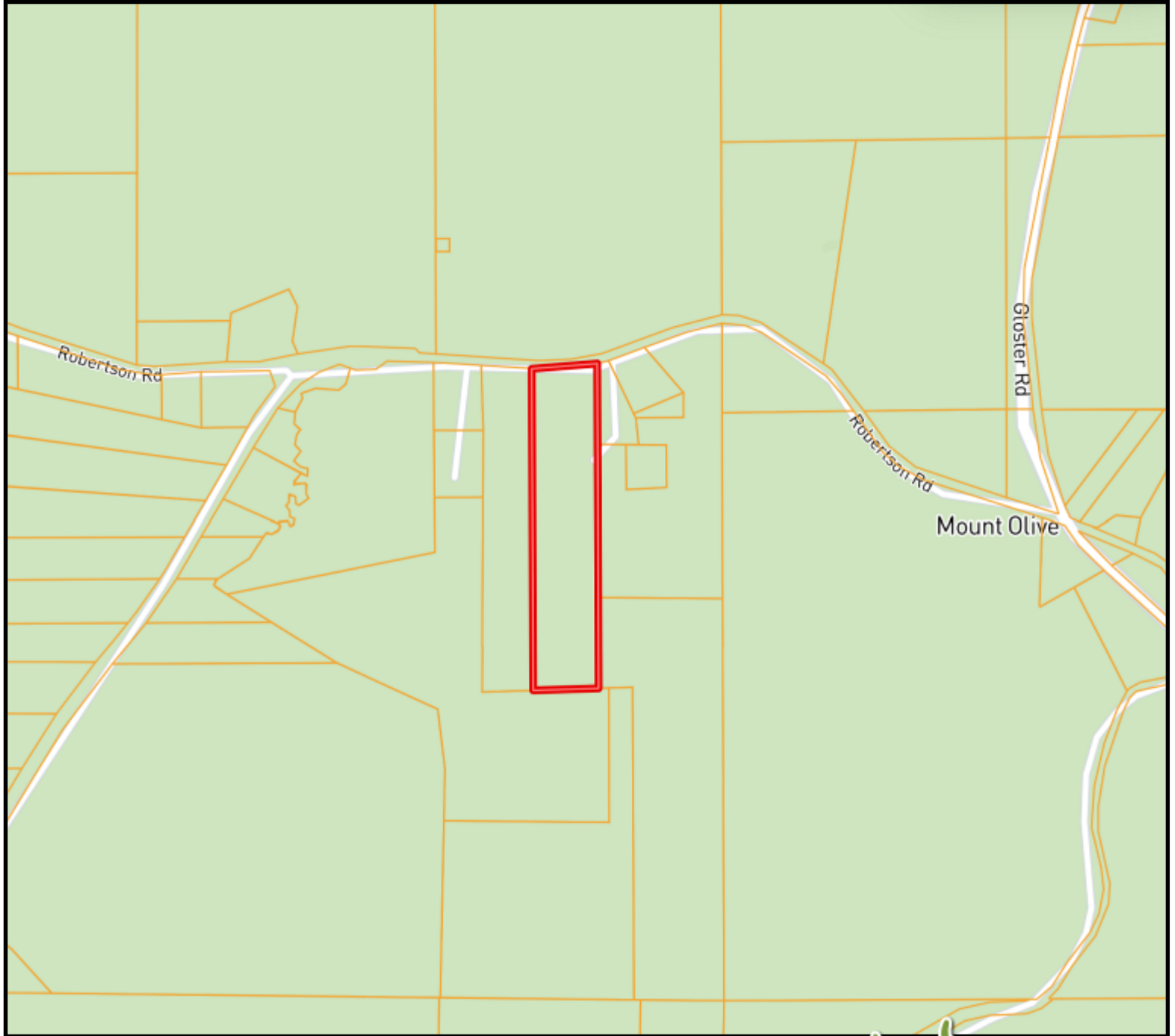


A Real Estate Expert You Can Trust
TomSmithLandandHomes.com

Information is believed to be accurate but not guaranteed.



Ownership Map



CLIF CANNON

REALTOR®

Office: 601.990.5070

Cell: 601.565.1070

Clif@TomSmithLand.com



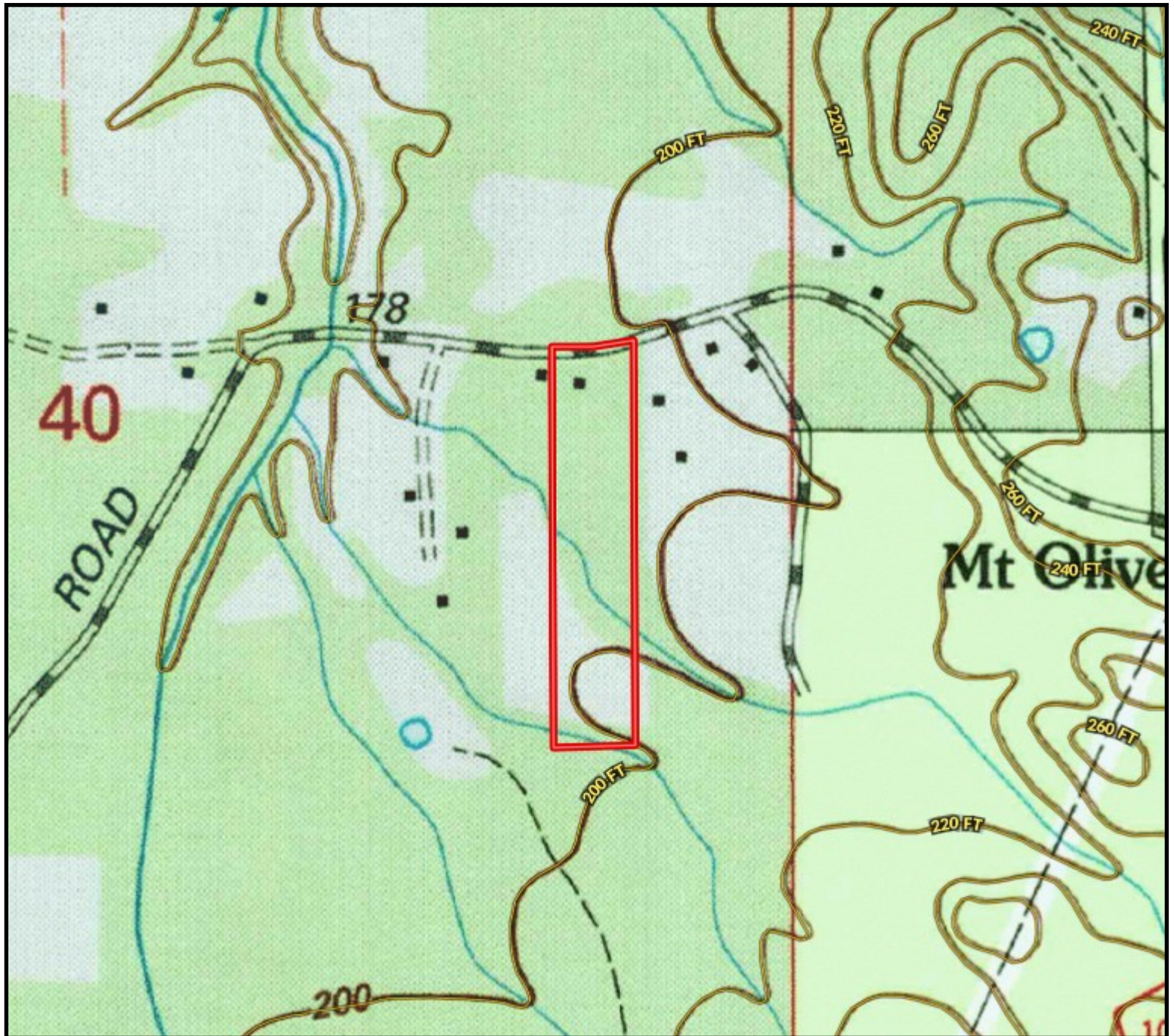
A Real Estate Expert You Can Trust

TomSmithLandandHomes.com

Information is believed to be accurate but not guaranteed.



Topographic Map



CLIF CANNON

REALTOR®

Office: 601.990.5070

Cell: 601.565.1070

Clif@TomSmithLand.com



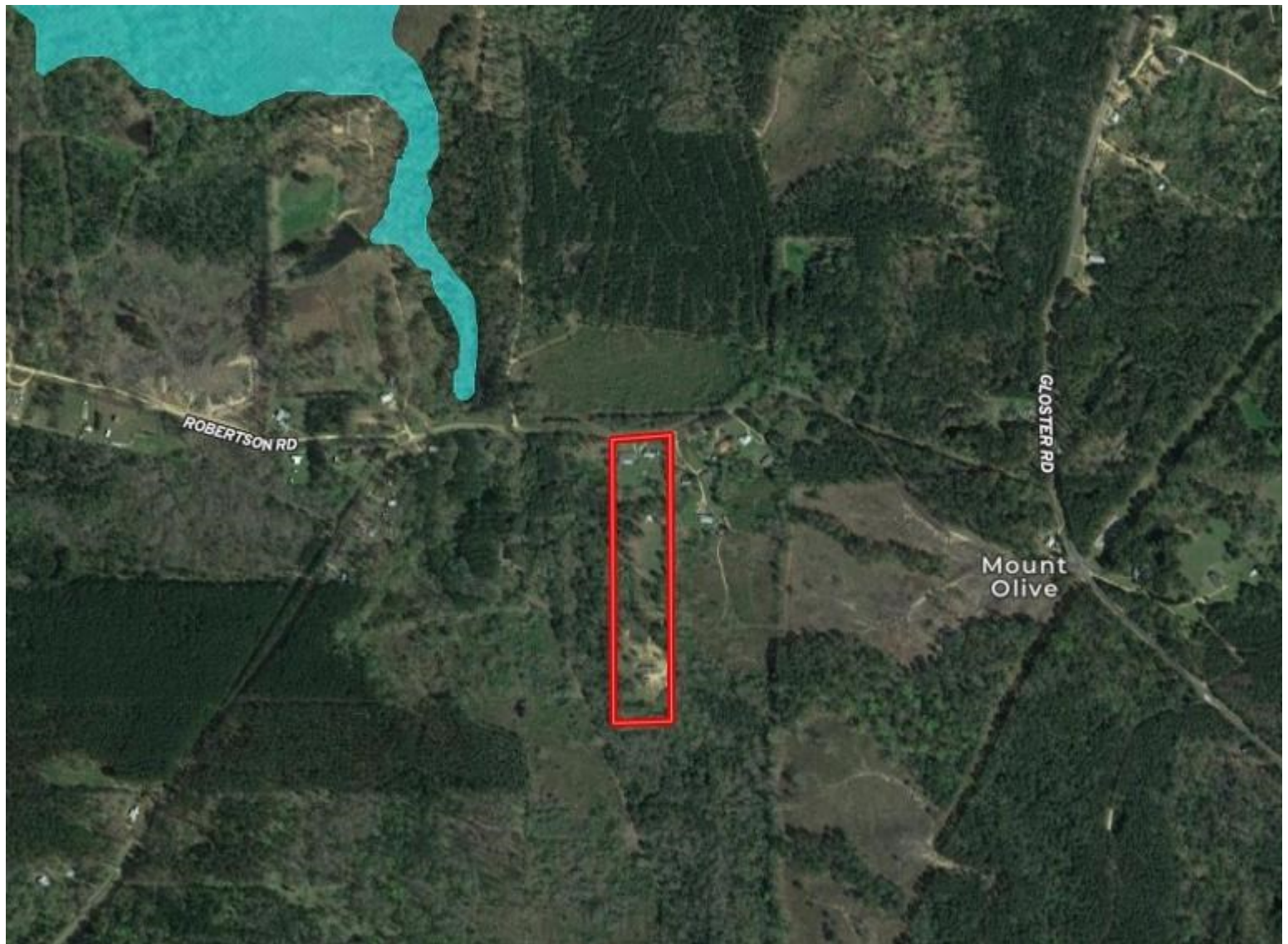
A Real Estate Expert You Can Trust

TomSmithLandandHomes.com

Information is believed to be accurate but not guaranteed.



Flood Map



CLIF CANNON
REALTOR®

Office: 601.990.5070

Cell: 601.565.1070

Clif@TomSmithLand.com

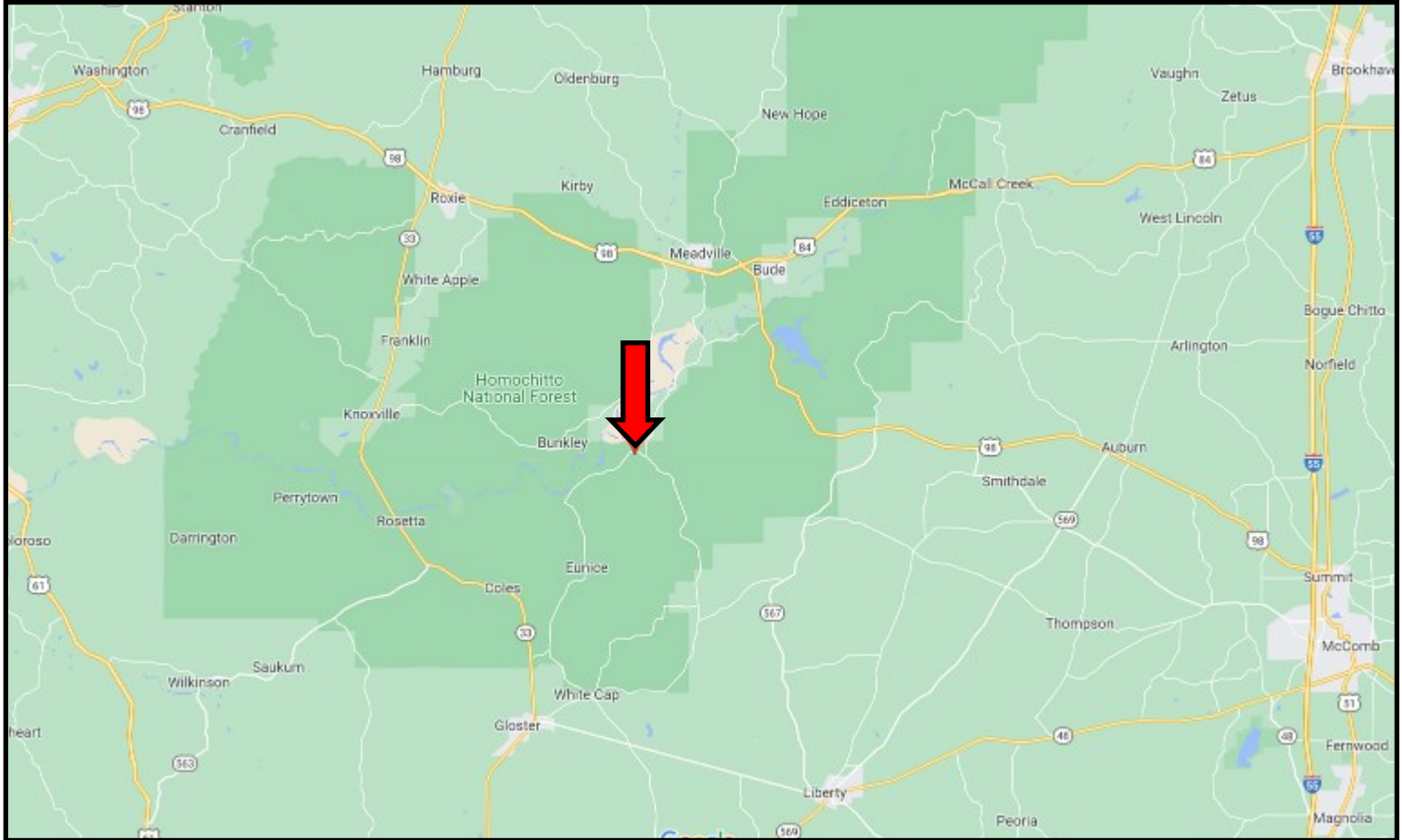


A Real Estate Expert You Can Trust
TomSmithLandandHomes.com

Information is believed to be accurate but not guaranteed.



Directional Map



Directions from Sullivans Grocery in Bude, MS: Travel east on US-98 for 1.8 miles. Turn right onto Yap Road and travel for 2.6 miles. Continue straight onto Meadville/Gloster Road for 5.5 miles. Turn right onto Robertson/Mt. Olive Road and travel for .5 miles. The property will be on the left. [Google Maps](#)

507 Robertson Road
Meadville, MS 39653



**CLIF
CANNON**
REALTOR®

Office: 601.990.5070
Cell: 601.565.1070
Clif@TomSmithLand.com



A Real Estate Expert You Can Trust

TomSmithLandandHomes.com

Information is believed to be accurate but not guaranteed.

